

MIW
90739

.UUUU UUUU
UUUU UUUU
UUUU UUUU
UUUU UUUU
UUUU UUUU
UUUU UUUU
UUUU UUUU
UUUU UUUU
UUUUUUUUUUUUUUUUUUUU
UUUUUUUUUUUUUUUUUUUU
UUUUUUUUUUUUUUUUUUUU
UUUUUUUUUUUUUUUUUUUU

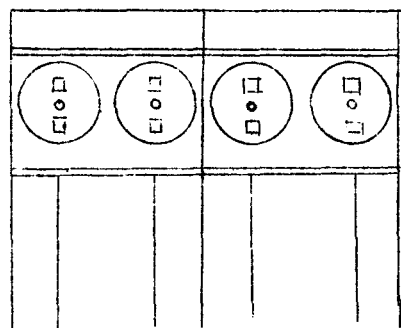
N
O
T
E
S
&
C
O
M
M
E
N
T
S

TABLE OF CONTENTS

Compare Errors	p. 2
July Billings	p. 3
Library Changes	p. 3
MNF Manuals	p. 4
OMNITAB	p. 4
Short Courses	p. 3
SPSS	p. 4
System Notes Archives	p. 5
Technical Notes	p. 4

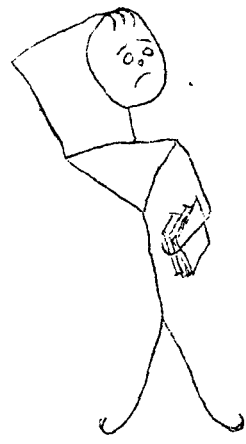
CCCCCCCCCCCCCCCCCC
CCCCCCCCCCCCCCCCCC
CCCCCCCCCCCCCCCCCC
CCCCCCCCCCCCCCCCCC
CCCC
CCCC
CCCC
CCCC
CCCC
CCCCCCCCCCCCCCCCCC
CCCCCCCCCCCCCCCCCC
CCCCCCCCCCCCCCCCCC
CCCCCCCCCCCCCCCCCC

N
O
T
E
S
&
C
O
M
M
E
N
T
S



CCCCCCCCCCCCCCCCCC
CCCCCCCCCCCCCCCCCC
CCCCCCCCCCCCCCCCCC
CCCCCCCCCCCCCCCCCC
CCCC
CCCC
CCCC
CCCC
CCCCCCCCCCCCCCCCCC
CCCCCCCCCCCCCCCCCC
CCCCCCCCCCCCCCCCCC
CCCCCCCCCCCCCCCCCC

N
O
T
E
S
&
C
O
M
M
E
N
T
S



COMMENTS NOTES & COMMENTS NOTES & COMMENTS

Volume 5, Number 9
September, 1971

University Computer Center
University of Minnesota

N
O
T
E
S

COMPARE ERRORS ON JOB DECKS1. What is a compare error?

As each card of an input deck passes through the card reader, it is read by each of two read locations. Electronic circuits compare the results of the reads and stop the reader if the compare fails. This becomes a compare error.

2. What causes compare errors?

The causes are many. Often the problem is due to transient disturbances or marginal performance of one or both read processes. If this is the case, repeating the read of the card will be successful. However, a compare error is more often due to a damaged card, a card with holes mispunched, or a card with grease or oil marks (this makes the spot almost transparent which causes the optical read to fail).

3. What happens to my job?

The effect of a compare error which will not re-read after several attempts is usually fatal to a job. If a re-read is impossible then the card is not included in the deck-- which often may be a disaster to the job.

4. What does UCC do about compare errors?

The operator will normally attempt to re-read several times a card producing a compare error. If the card will not re-read without compare errors the reading of the job deck will be immediately aborted by the operator. Most jobs will fail at execution until the bad card is corrected.

5. What if I want my job read even if it has compare errors?

Sometimes a missing card is acceptable to a program (as bad data, for example). Sometimes there may be many bad cards in a data deck and the user will want to locate all of them in one run. In such cases (or others) the user may attach a note to his deck instructing the operator as to how he wishes compare errors handled.

In the absence of specific instructions from the user, the policy stated in 5) above will be observed.

FALL QUARTER SHORT COURSES

The following short courses will be offered by UCC during Fall Quarter. No registration is required and no fees are charged. We suggest that you do some preliminary reading before attending any of the classes. Introductory manuals are available in the the Engineering bookstore. If you are unsure of what manuals will be needed, call 373-7744. All classes will be in Room 136 Main Engineering.

<u>Class</u>	<u>Dates</u>	<u>Days</u>	<u>Hours</u>	<u>Instructor</u>
Beginning FORTRAN SCOPE	Oct. 4- Oct. 15 Oct. 18- Oct. 22	M-F M-F	4:15-5:00PM 4:15-5:00PM	R. Franta R. Franta
Advanced FORTRAN COBOL	Oct. 25- Nov. 5 Oct. 4- Oct. 22	M-F MWThF	4:15-5:00PM 3:15-4:00PM	R. Franta D. Lewis
COMPASS	Oct. 25- Oct. 29	MWThF	3:15-4:00PM	N. Reddy

CHARGES FOR DISK STORAGE AND MOUNTING

Charges for disk storage and tape mounting for July which did not appear on the July billings have been added to the August billings.

LIBRARY ADDITIONS & CORRECTIONS (9/6/71)

Revised:

*GENSORT Revised error messages; added new option (see new writeup)

Added:

*GENSRT2 Similar to GENSORT except that sorting is on a column basis

*SPACZRO Converts 55B codes to 00B codes for use with GENSORT and GENSRT2 (replaces BLNKZRO)

*ZROSPAC Converts 00B codes to 55B codes for use with GENSORT and GENSRT2 (replaces ZROBLNK)

QSORT High speed in-memory sort into ascending values.

*writeups forthcoming

UCC TECHNICAL REPORTS

The University Computer Center will, in future, be producing a series of technical reports dealing with programming applications, languages, etc. The first report, Some ALGOL Information, by Jesusa V. Kinderman is now available in the UCC library, Room 227 Experimental Engineering.

OMNITAB USERS

As of this date, the file name OMNITAB has been changed to OMNIT. Questions should be directed to Randy Byers, Management Information Systems, 373-5047.

MNF MANUAL

A corrected preliminary version of the MNF manual is presently being printed and will be available in the Engineering bookstore on or about October 1st at a cost of \$2.50 per copy.

FROM THE WEST BANKSPSS Short Course

A one-week short course on SPSS (Statistical Package for the Social Sciences) will be offered by the Social Sciences Research Facilities Center from Monday, October 11 through Friday, October 15. The course will be held between 4:00 and 5:00 PM in Room 435 Blegen Hall. A number of the manuals, "SPSS", by N.H. Nie et al. are in the West Bank Bookstore. Manuals are desirable but not necessary for the course.

The SPSS system is a series of statistical programs that share a wide variety of modification, transformation, and annotation features desirable to social science researchers. The SSRFC feels that this system, considering ease of use, is probably the best general-purpose statistical package now available at the University.

The course is free and there is no registration necessary. Those desiring more information on the course should call the SSRFC at 373-5599.

SYSTEM NOTES ARCHIVES

*** SYSTEM NOTES - MON 23AUG71. *** 23.

A new subdirectory, LDS, (Latest Software Developments) has been added to pack UCC001. In this subdirectory the user will find files which contain new or improved programs and subroutines which for one reason or another have not been put on the system. When a new file is added or an old file deleted the users will be notified through the System Notes.

The first files to be added to subdirectory LSD are FTNOVL and RUNOVL. These files contain, in relocatable form, a completely rewritten version of OVERLAY. File RUNOVL is for RUN/FUN programs, while FTNOVL is for FTN/FT3 programs. The main difference between the old and new versions is the addition of two new entry points to facilitate the loading of overlays from a random disk file and/or the users ECS FL OVOPEN and OVMOVE. The call to OVERLAY is upward compatible. Each of these new subroutines is about 500B CM words longer than the old version.

For a complete writeup describing the new capabilities insert the following control card in your deck:

WRITEUP,OVERLAY.

The COBOL object routines have been removed from the system and now only reside on the permanent file COBLIB. For the normal run with a COBOL compilation and execution using the default loader (MMLOADER) nothing has changed, but when an existing COBOL binary program is to be executed the library COBLIB must be specified and MMLOADER used::

LIBRARY,COBLIB.

FILE.

For more information see the INFO file writeup on MMLOADER.

TIDY-- A program to clean up FORTRAN source is now available on a permanent file named TIDY. To obtain a writeup on TIDY insert the following control card in your deck:

WRITEUP,TIDY.

*** END OF NOTE ***