

MSG  
A32r



**UNIVERSITY OF MINNESOTA  
COLLEGE OF EDUCATION**

**June Commencement, 1978**

**THURSDAY EVENING, JUNE 8, 7:30 P.M.  
NORTHROP MEMORIAL AUDITORIUM**

# Board Of Regents

The Honorable Erwin L. Goldfine, Duluth  
The Honorable Lauris D. Krenik, Madison Lake  
The Honorable Robert Latz, Golden Valley  
The Honorable David M. Lebedoff, Minneapolis  
The Honorable L. J. Lee, Bagley  
The Honorable Charles F. McGuiggan, Marshall  
The Honorable Wenda Moore (Mrs. Cornell), Minneapolis  
The Honorable Mary T. Shertler, St. Paul  
The Honorable Neil C. Sherburne, Lakeland  
The Honorable Michael W. Unger, St. Paul  
The Honorable David C. Utz, M.D., Rochester

# Central Executive Officers

C. Peter Magrath, President  
Duane A. Wilson, Secretary to the Board of Regents  
James F. Brinkerhoff, Vice President for Finance and Development  
Walter H. Bruning, Vice President for Administrative Operations  
Lyle A. French, Vice President for the Health Sciences  
Stanley B. Kegler, Vice President for Institutional Planning and Relations  
Henry Koffler, Vice President for Academic Affairs  
Frank B. Wilderson, Vice President for Student Affairs

# College of Education Administrators

William E. Gardner, Acting Dean  
Darrell Lewis, Associate Dean  
Eloise M. Jaeger, Assistant Dean  
Gene L. Piche, Assistant Dean

---

THE BOARD OF REGENTS requests that the following Northrop Memorial Auditorium procedures or regulations be adhered to: (1) Smoking is confined to the outer lobby on the main floor, to the gallery lobbies, and to the lounge rooms. (2) The use of cameras to tape recorders by members of the audience is prohibited. (3) The sale of tickets by anyone other than authorized Box Office personnel is prohibited in the lobby or corridors of Northrop Memorial Auditorium.

# Order of Events

**PRELUDE CONCERT:** From 7:15 to 7:30 p.m., Thomas Bartsch will play Concerto #13 (Walther) and Toccata and Fugue in D Major (J. S. Bach).

**PROCESSION:** The line of march for the candidates is as follows:

## Bachelor of Science Degree Candidates

Department of Curriculum and Instruction:

Art Education  
Elementary Education  
English, Speech-Communication,  
Theatre Arts Education  
Mathematics Education  
Music Education  
Music Therapy  
Science Education  
Second Languages and Cultures  
Social Studies Education

School of Physical Education, Recreation and School Health Education

Physical Education  
Recreation and Park  
Administration  
School and Community  
Health Education

Department of Vocational and Technical Education

Agriculture Education  
Business Education  
Distributive Education  
Home Economics Education  
Industrial Education  
Vocational Industrial Education

## Master of Education Degree Candidates

During the procession Thomas Bartsch will play:

*Trumpet Tune* .....David N. Johnson

**THE NATIONAL ANTHEM:** As Professor Robert Borg steps to the microphone, the entire audience will stand and join him in singing the National Anthem:

O, say! can you see, by the dawn's early light,  
What so proudly we hail'd at the twilight's last gleaming,  
Whose broad strips and bright stars, thro' the perilous fight,  
O'er the ramparts we watch'd were so gallantly streaming?  
And the rockets' red glare, the bombs bursting in air,  
Gave proof thro' the night that our flag was still there.  
O, say, does that star-spangled banner yet wave  
O'er the land of the free and the home of the brave?

**INVOCATION** (the audience still standing): The Reverend Roland Severson, Lutheran Campus Ministry.

**WELCOME:** Dean William E. Gardner, College of Education.

**MORSE-AMOCO AWARD PRESENTATION:** Professor Andrew Collins will be recognized for his outstanding contributions to undergraduate education.

**SPEAKING FOR THE STUDENTS:** Mary Ann E. Nelson, Education Student Board President.

**COMMENCEMENT ADDRESS:** Dr. Howard Jones, Dean, College of Education, University of Iowa.

"Diversity and Consensus"

**CONFERRING OF DECREES:** Regent Charles F. McGuigan will confer degrees upon members of the graduating class.

**PRESENTATION OF CANDIDATES FOR THE BACHELOR OF SCIENCE DEGREE:** Dean Gardner will introduce the chairpersons of the departments, who will present the candidates for degrees. They are, in the order of their introduction:

Professor Robert Dykstra, Chairman, Department of Curriculum and Instruction

Professor G. Alan Stull, Director, School of Physical Education, Recreation and School Health Education

Professor Jerome Moss, Chairman, Department of Vocational and Technical Education

**PRESENTATION OF CANDIDATES FOR THE MASTER OF EDUCATION DEGREE:** Dean Gardner will present each candidate.

**ALUMNI WELCOME:** David Abrahamson, President of the College of Education Alumni Association, will congratulate the new graduates.

**HAIL! MINNESOTA:** As Professor Borg steps to the microphone, the audience will rise and join him in singing the University's Alma Mater:

Minnesota, hail to thee!	Like the stream that bends to sea,
Hail to thee, or college dear!	Like the pine that seeks the blue,
Thy light shall ever by	Minnesota, still for thee
A beacon bright and clear;	Thy sons are strong and true
Thy sons and daughters true	From thy woods and waters fair,
Will proclaim thee near and far;	From thy prairies waving far,
They will guard they fame	At thy call they throng
And adore thy name;	With their shout and song,
Thou shalt be their Northern Star.	Hailing thee their Northern Star.

**RECESSIONAL:** As the graduates leave their seats, Thomas Bartsch will play:

*Fanfare* ..... Jacques Lemmens

**THE AUDIENCE** is requested to remain seated until those in academic costume have marched out.

**RECEPTION:** There will be a reception honoring graduates in the Foyer of Northrop Auditorium immediately following commencement.

# March Candidates For Graduation

Subject to the completion of all curriculum requirements at the close of the winter quarter, degrees will be conferred as indicated on those listed below and on others meeting the graduation requirements.

## COLLEGE OF EDUCATION

### Bachelor of Science

- Andrea Ruth Altman, A.A.  
Joni Marie Arrell, Minneapolis  
*Carolyn Louise Aust, Sioux City, Iowa, with distinction*  
*Elizabeth Jeanne Backstrom, Golden Valley, with high distinction*  
Craig A. G. Berdie, Minneapolis, with distinction  
Susan Jean Berggren, A.A., Rochester, with distinction  
Marc Edward Booth, A.A., Minneapolis, with high distinction  
Michael James Brand, St. Paul  
Rosemary Braun, Grand Rapids, with high distinction  
William Clark Brown, Barron, Wis., with distinction  
Anthony Carter, Duluth  
Peggy Ann Cook-Groenjes, Lakeville  
Robert John Crunstedt, Brooklyn Park, with distinction  
Carol Jean Dahlgren, Minneapolis, with distinction  
Joyce Cecile Denham, Minneapolis, with distinction  
Julie Marie Diekman, Litchfield, with high distinction  
Catherine Tasia Dixon, A.A., Minneapolis, with high distinction  
Bodo Richard Dumke, B.A., St. Paul  
*Kirk Dudley Elias, Crystal, with distinction*  
*Sandra Jean Erenberg, St. Paul, with distinction*  
*Roy Richard Erickson, St. Paul, with high distinction*  
Mary Gillette Fenelon, St. Paul  
Taryn Nelson Flolid, Alexandria, with high distinction  
Susan Marie Frick, Roseville  
David Andrew Fridlund, Minneapolis  
Charmaine Stern Garcia, El Paso, Tex., with distinction  
Peter Janis Geidans, Minneapolis  
Catherine Margaret Goth, Dayton, with distinction  
Constance Beth Gustafson, Burnsville, with high distinction  
Gayle Seaberg Harvey, Minneapolis, with distinction  
Christine McMahon Hauwiler, St. Paul  
Laurel Anne Hayes, St. Paul  
Ann Therese Healy, St. Paul, with distinction  
Shirley Marie Hermel, Aitkin  
Peggy Anne Hill, South Milwaukee, Wis., with distinction  
Kenneth Allan Hupila, B.S., Grand Rapids  
Timothy Hove Kelly, Minneapolis, with high distinction

Tarik Abdallah Khal, B.A., Beirut,  
 Lebanon  
 J. Craig Kirkpatrick, Hibbing  
 John Melvin Kirtland, Jr., B.A.,  
 Hopkins  
*David Allen Knight, Eagan, with  
 distinction*  
*Patricia Ann Larson, New Hope,  
 with high distinction*  
*Virginia Sue Larson, A.A.,  
 Bloomington, with high  
 distinction*  
*Victoria Gail Linner, Edina, with  
 distinction*  
*Gerald Thomas Matykowski,  
 Minneapolis, with high  
 distinction*  
*Susan L. McCloughan,  
 Minneapolis, with distinction*  
 Monica Anne McDonald, Edina  
 Kathryn Ann McRae, St. Paul,  
 with distinction  
 Pamela Jean Meuwissen,  
 Roseville  
 Kristine Helen Moeller, B.A.,  
 Duluth  
 Michael Scott Monson, Golden  
 Valley  
 Berneta Lynn Morris, Bismarck,  
 N.D.  
 Catherine Sheila Murphy, B.A.,  
 Florissant, Mo.  
*Julia Skonseng Nelson, Brainerd,  
 with distinction*  
*Rebecca Ann Ness, South St.  
 Paul, with distinction*  
*David Everett Nord, with high  
 distinction*  
 Martin Anthony O'Link, B.A.,  
 Minneapolis  
*Jeffrey Lance Olson, Minneapolis,  
 with distinction*  
*Roseann M. Pfiffner-Bowman,  
 Minneapolis, with distinction*  
*Cynthia Dawn Polk, Northfield,  
 with distinction*  
*Linda Lee Prust, Crystal, with  
 high distinction*  
*Michael Bertram Prust, St. Peter,  
 with distinction*  
*Pamela Mary Quirk, Watertown,  
 Wis., with distinction*  
 Charles Paul Quistad, North St.  
 Paul  
*Laura Jean Rathmann,  
 Minneapolis, with high  
 distinction*  
 Terrance Joseph Reardon, St.  
 Paul  
*Debra Lee Resman, New  
 Brighton, with high distinction*  
 Deborah D. Roberts, B.A., St.  
 Paul  
*Steven Eric Schon, Minneapolis,  
 with distinction*  
 Stephen C. Schwei, B.S.,  
 Milwaukee, Wis.  
 Aloise J. Smith, Edina  
*Cooksey Jean Smith,  
 Bloomington, with high  
 distinction*  
*Dorothy Jean Smyth, Plymouth,  
 with high distinction*  
*Mark Alan Solie, Dawson, with  
 distinction*  
 Charles Gilbert Somdahl,  
 Minneapolis  
*Rita Vinetta Sparnins,  
 Minneapolis, with distinction*  
 Raymond Francis Standke, B.S.,  
 Owatonna  
*Nancy Marie Storm, Burnsville,  
 with distinction*  
*Eileen Strandlof, Roseville, with  
 high distinction*  
*Patrick Joseph Strother, with  
 distinction*  
 Sherri Louise Sturzl, Minneapolis  
 Nancy Marie Swanson,  
 Minneapolis, with distinction  
*Brian Carl Swedberg, St. Paul,  
 with high distinction*  
 Nina Szulga, A.A.S., Minneapolis  
 Allan Dale Thompson, Jr., New  
 Brighton, with distinction  
 John Frederick Thoreson,  
 Richfield  
 Ronn Allison Tulman,  
 Hutchinson  
 Janet Howard Usher, Houston,  
 Tex.

*Cheryl Jean Vicker, Rochester,  
with distinction*  
Scott Kimberly Wahlberg, White  
Bear Lake  
Gregory Joseph Warhol,  
Minneapolis  
George David Washington  
Richard Paul Weed, B.A.,  
Excelsior  
*Scott Martin Wieker,  
Minneapolis, with distinction*  
*Thomas Mark Wierschem,  
Milwaukee, Wis., with  
distinction*

*Marjory Jane Williams, Prior  
Lake, with high distinction*  
*Susan Deborah Williams, St.  
Paul, with distinction*  
*Sherron Ann Winter, St. Louis  
Park, with distinction*  
*MaryJean Wolke, St. Paul, with  
distinction*  
*David Mark Zander, Minneapolis,  
with high distinction*  
*Robin Curt Zarembinski,  
Oakdale, with high distinction*  
*Julie Ann Zimmerman, Mankato,  
with high distinction*

### Master of Education

Gary Ronald Banick, Pierz  
Ruth Mary Dessel, B.A., West  
Union, Iowa  
Mary Ann Finegan, B.S.  
Elaine Johnson Flink, B.S.,  
Minneapolis  
Suzanne Jean Hougland, B.S.,  
Rosemount  
Peter Michael Jockey, B.S.,  
Minneapolis  
Patricia Kay Kelley, B.S.,  
Minneapolis  
William Edward McMonigal,  
B.A., Eagan  
Jill Peacock, South Bend, Ind.  
David Eugene Schmidt, B.S.

Mark Richard Sielaff, B.A., Elk  
River  
Jeneyene Elizabeth Sitts, B.S.,  
Elk River  
Richard David Stryker, B.S.B., St.  
Louis Park  
Joseph Michael Taschuk, B.S.,  
Minneapolis  
Linda Mary Van Arsdale, B.S.,  
Anoka  
Lilamae Anne Wick, B.A.,  
Minneapolis  
Carol Rosenthal Zuckman, B.A.,  
Reading, Pa.  
Clariene Minna Zwieg, B.S.,  
Forest Lake

# COLLEGE OF EDUCATION AND COLLEGE OF AGRICULTURE

## Bachelor of Science

Paul Dee Berrisford III, St. Paul  
Kevin Anthony Dahlman, Cokato  
John R. Dessonville, Dawson  
*Robert Edward Lee, B.S., Harris,  
with distinction*

Raymond Louis Miron, Hugo  
*Timothy Wayne Olsen, Windom,  
with distinction*  
Craig Wendel Paskvan, Akeley

# COLLEGE OF EDUCATION AND COLLEGE OF HOME ECONOMICS

## Bachelor of Science

Julia Fern Karl, Hutchinson  
Mary B. Rosendahl, Ada

*Cynthia Jeanne Schmiede,  
Juneau, Alaska, with high  
distinction*



# June Candidates For Graduation

Subject to the completion of all curriculum requirements at the close of the spring quarter, degrees will be conferred as indicated on those listed below and on others meeting the graduation requirements.

## COLLEGE OF EDUCATION

### Bachelor of Science

- Daniel Frederick Abrahamson,  
B.S., Mound
- MaryLou Anne Altman, Osseo
- Marcelyn Marie Amble, Edina,  
with distinction*
- Barbara Jean Anderson, St. Paul
- Janet Marie Anderson, Albert Lea
- Jean M. Arlich Anderson, Forest  
Lake, with distinction*
- Theresa Marie Anderson,  
Minneapolis, with distinction*
- Lynn Lyla Arnsdorf, St. Anthony  
Village, with distinction*
- Lydia Thordyce Ahrens Bakke,  
Bloomington
- George Edward Barnes, Jr., A.A.,  
Greenfield, Ohio
- Frederick Paul Bartling, St. Paul,  
with distinction*
- Belinda Marie Bergstrom, A.A.,  
St. Paul
- Carla Ann Besonen, Minnetonka,  
with high distinction*
- Mary Elizabeth Bezanson, White  
Bear Lake, with high distinction*
- Michael Barry Bierbaum,  
Brooklyn Center, with  
distinction*
- Sheila Maureen Binns, A.A.,  
Bloomington, with distinction*
- Roberta Jean Blake, Grand Rapids,  
with distinction*
- Jane Clare Blecha, Grand Forks,  
N.D., with high distinction*
- Terry Joseph Brau, Redwood Falls,  
with distinction*
- Kathleen Ann Braun, B.F.A.,  
White Bear Lake
- Roni Sue Broms, St. Louis Park,  
with distinction*
- Cynthia Bess Brown, A.A.,  
Minneapolis
- Cynthia Fleisher Brown,  
Minneapolis
- Robin Samuelson Brown, Wayzata,  
with high distinction*
- Vincent Robert Brown,  
Minneapolis, with distinction*
- Cindy Lou Budenske, Faribault,  
with high distinction*
- Ellen Sue Burke, East Grand  
Forks, with high distinction*
- Mary Elizabeth Buss, Jordan, with  
distinction*
- Daniel Christopher Champion,  
Robbinsdale, with high  
distinction*
- Janice Marie Carlson-Buffie, Edina
- Anne Marie Cavanaugh, Fridley
- Norman Fredrick Champ,  
Minneapolis, with distinction*
- Elizabeth Margaret Pagels  
Cheney, New Hope
- Therese Celine Cragg, St. Paul
- Brett Luther Crumlett, Richfield,  
with distinction*
- Joyce Culver, A.A., Minneapolis,  
with distinction*
- Linda Schlueter Curran, with  
distinction*
- Richard Michael Cybyske,  
Robbinsdale, with distinction*
- Darlene Carla Dahlgren,  
Minneapolis
- John McClellan Danielski, B.A.,  
Richfield

Deborah Anne Davis, Coon  
 Rapids, with distinction  
 Virgie June Day, Minneapolis,  
 with high distinction  
 Kay Ellen Deranek, A.A., White  
 Bear Lake, with distinction  
 Susan Jane DeVout, Roseville,  
 with distinction  
 Frank Augustus Dewey, B.A.,  
 Roseville  
 Mark Thomas Dolan, Minneapolis,  
 with distinction  
 Cheryl McCabe Doring,  
 Alexandria, with distinction  
 Nancy Catherine Drabek, A.A.,  
 Richfield, with distinction  
 Joanne Marie Dreher, St. Paul,  
 with distinction  
 Cheryl Lynn Drivdahl, Anoka,  
 with distinction  
 Catherine Jean Eayrs, West  
 Concord, with distinction  
 Kathleen Hegre Eckert,  
 Minnetonka, with distinction  
 Debra Jean Edberg, A.A.,  
 Bloomington, with high  
 distinction  
 David Mark Edholm, Columbia  
 Heights  
 Peggi Mary Elmquist, Robbinsdale  
 Kristi Lyn Erickson, Winona, with  
 distinction  
 Donald William Ess, Madison,  
 with distinction  
 James Freeman Evert, Moorhead,  
 with high distinction  
 James Lawrence Fellman,  
 Minneapolis, with distinction  
 Mary Kay Fortmeyer, Minneapolis,  
 with distinction  
 Steven T. Foster, A.A., North St.  
 Paul  
 Eudora Lee Frakes, Minneapolis  
 Christine A. Frenning, St. Paul,  
 with high distinction  
 Vernon Leroy Frydenlund,  
 Hayward  
 Joan Emily Furry, Beloit, Wis.  
 Theresa Louise Gade, Richfield  
 Denise Kay Galindo, Minneapolis  
 Gary Michael Gerst, St. Paul, with  
 distinction

Frances Lou Good, Minneapolis,  
 with distinction  
 Michele Denise Greenwell, B.A.,  
 Baudette  
 Kathleen Marie Grindle, Apple  
 Valley, with high distinction  
 David Henry Grono, New  
 Brighton  
 Vicky Lynn Gunvalson, with  
 distinction  
 Kathy Louise Haarstad, Ellsworth,  
 Wis.  
 David Scott Hagner, Minneapolis,  
 with distinction  
 Catherine Mary Miller Hanson,  
 Coon Rapids, with distinction  
 Georgia Kim Harkins, St. Paul  
 Park, with distinction  
 Joyce Ruth Harmon, B.S.,  
 Rochester  
 Connie Lynn Haugen, Fridley,  
 with high distinction  
 David Ronald Hawkinson, Jr., St.  
 Paul, with distinction  
 Joseph A. Headley, B.A., Columbia  
 Heights, with high distinction  
 Meredith Ann Hedger,  
 Minneapolis, with distinction  
 Angelika Magdalene Heerema,  
 Bremerhaven, West Germany  
 Jerald Arthur Hegdahl, B.S.,  
 Bloomington  
 Heidi Mary Hetherington,  
 Minneapolis  
 Martin Alexander Hidy, Edina,  
 with distinction  
 Craig Allan Hilary, Minneapolis  
 Robert Donald Hoagland,  
 Bloomington  
 Debra Lee Hobbs, with high  
 distinction  
 Jill Lynn Hoese, with high  
 distinction  
 Allen Everett Hoffman, St. Paul,  
 with high distinction  
 Ann P. Hooke, B.A., St. Paul  
 Duane Kendall Hookom, Eden  
 Prairie  
 Jane Elizabeth Anne Hosmanek,  
 B.S., B.A., Kenosha, Wis., with  
 distinction

*Victoria Anne Hruska, Waterville, with distinction*  
 Charles Evans Hughes, Dubuque, Iowa  
 Margaret Cecile Hughes, Minneapolis  
 Mark Elliott Ingelin, B.A., Detroit Lakes  
*Annette Marie Jakel, Gilbert, with distinction*  
*Jonathan Dale Jamsa, Byron, with high distinction*  
 Elizabeth E. Jenkins, Minneapolis  
 Christine Nancy Jensen, B.A., St. Paul  
*Jean Cynthia Johnson, St. Joseph, with high distinction*  
*Jill Patricia Johnson, Minneapolis, with high distinction*  
*Julie Nina Johnson, St. Paul, with high distinction*  
 Kathryn Louise Johnson, A.A., Minneapolis  
 Kurt Stanley Johnson, Robbinsdale  
*Margaret Ann Johnson, A.A., Minneapolis, with high distinction*  
 Roland Cort Johnson, St. Paul  
 Anthony Charles Jordan, Minneapolis  
*Michael David Kaiser, Crystal, with distinction*  
 Diana Peters Kamminga, B.A., M.A., Minneapolis  
*Ann Ruth Keelin, Burnsville, with distinction*  
*Kathleen Edna Kelley, St. Paul, with high distinction*  
 Michael Steven Kempenich, B.A., St. Paul  
*Mary Margaret Kenny, Bloomington, with distinction*  
*Carla Irene Kilpela, Minneapolis, with distinction*  
*Craig M. Klawitter, St. Paul, with distinction*  
 Kimary Sue Knutson, New Ulm  
 Jean Ellen Koepke, Bloomington  
*Deborah Katherine Kortuem, St. Paul, with high distinction*  
 Christopher Joseph Kramer, Minneapolis  
 Kevin Peter Krantz, Red Wing, with high distinction  
*Linda Lee Krippner, Crystal, with distinction*  
 Kathleen A. Kuntz, A.A., Burnsville, with high distinction  
*Kathleen Ann LaBoone, Duluth, with high distinction*  
 Ronald Vernon Lachelt, B.A., M.Ed., Minneapolis  
 Jeffrey N. LaFleur, Greenfield, Wis.  
*Alicia Laporta, Minneapolis, with distinction*  
*Susan Marie Larsen, St. Paul, with distinction*  
*Bethany Jo Larson, Edina, with distinction*  
*Diane Elizabeth Larson, Clintonville, Wis., with distinction*  
 Daniel William Lass, Glyndon  
*Rose-Lynn Lebewitz, Minneapolis, with distinction*  
*William Andrew Lee, Glenwood, with distinction*  
*Karen Catherine Lenss, St. Louis Park, with distinction*  
 Lynda L. Leonard, B.A., Minneapolis  
 Debra Kay Lien, Albert Lea  
 Craig Alan Lindman, Brooklyn Center  
 Donna Lee Lindman, Minneapolis  
*Marsha Faye Liss, Minneapolis, with distinction*  
*Gary Michael Livingston, A.A., Brooklyn Center, with distinction*  
 Timothy Joel Loberg, Brooklyn Center  
*Jean E. Logman, St. Paul, with high distinction*  
 George Steven Lokken, B.S., Redby  
 William Edward Lorsung, B.A., M.A., Minneapolis  
*Steven Allen Lubbers, A.A., Coon Rapids, with high distinction*  
*Barbara Ann Macheel, South St. Paul, with distinction*

*Karene Manier, Marshfield, Wis.,  
with distinction*  
*Nancy Fox Maple, Deephaven*  
*Annette Marie Margarit, Richfield,  
with high distinction*  
*Laurie Ayn Mark, Minneapolis,  
with distinction*  
*Carol Ann Markham, Minneapolis*  
*Edward William Matar, Israel*  
*Pamela Ann Matthews, A.A.,  
Richfield*  
*Susan Brindell Matychuk,  
Burnsville, with distinction*  
*Christine Ann McDill, Custer,  
S.D., with distinction*  
*Deborah Anne McDonald, Edina,  
with high distinction*  
*Nancy Louise McFarlin, St. Louis  
Park, with distinction*  
*Patricia A. Mehle, A.A., Chisholm,  
with distinction*  
*Donald Joseph Meyers, Orono*  
*Teresa Ann Meyers, Minneapolis,  
with distinction*  
*Patrick Lee Meyman, Browerville,  
with distinction*  
*Mark A. Michelson, West St. Paul,  
with distinction*  
*Louise Shawn Miles, St. Paul, with  
high distinction*  
*James Douglas Miller,  
Minneapolis*  
*Nancy Louise Miller, B.A.,  
Minneapolis*  
*Thomas James Miller, Golden  
Valley, with distinction*  
*Joseph Paul Mirocha, Minneapolis*  
*Nancy Marie Mosely, Minneapolis,  
with distinction*  
*Ann Marie Mummah, Brooklyn  
Center, with high distinction*  
*Katherine Marie Munn, Crookston,  
with distinction*  
*Janice Marie Murray, Brooklyn  
Center*  
*Deborah Lacy Musick, Perry,  
Okla., with distinction*  
*Judy Kaye Myers, Robbinsdale,  
with distinction*  
*Georgia Mai Nagatomo, Fergus  
Falls, with distinction*  
*Susan Lynelle Nielson, St. Paul*

*Mary Louise Nilsen, Richfield,  
with distinction*  
*Christopher Owen Norbury, St.  
Louis Park, with high  
distinction*  
*Alice Ann Odden, Windom, with  
high distinction*  
*Brian Keith Olson, Ormsby, with  
high distinction*  
*Gregory Rolf Olson, Hopkins*  
*Mary Elizabeth Parker, A.A.,  
Bloomington, with distinction*  
*Mary Ann Paro, A.A.S.,  
Minneapolis*  
*Margaret Mary Paskvan, Chisholm*  
*Joy Elizabeth Pearson,  
Robbinsdale*  
*Stephanie Ann Pearson, Golden  
Valley*  
*Constance Marie Perrin, Anoka*  
*Mary Suzanne Peter, A.A., Coon  
Rapids*  
*John Patrick Petersen, B.A.,  
Robbinsdale*  
*Shirley Jeanne Petersen, St. Paul,  
with distinction*  
*Jon Timothy Peterson, St. Paul*  
*Robert Earl Peterson, Jr.,  
Minneapolis*  
*Dana Jean Phillips, Edina*  
*Mary Josephine Poehler, Edina,  
with distinction*  
*Lance W. Poitras, with distinction*  
*Joan Marie Polunc, Minneapolis*  
*Hans Joachim Porcher,  
Minneapolis, with distinction*  
*Carla Jean Pumilia, Edina, with  
high distinction*  
*Kathryn Brommell Quady, A.A.,  
Maple Plain, with distinction*  
*Mary Margaret Quady, Maple  
Plain*  
*Jeffrey Peter Ranta, Cook, with  
distinction*  
*Ann Beth Rasmusson, Rugby,  
N.D., with distinction*  
*Cheryl Ann Ray, B.S., Minneapolis*  
*Roberta Repp Rich, with high  
distinction*  
*Clark Lawrence Rivard, B.A.,  
Taylors Falls*

Cynthia Lee Pope Robinson,  
 B.F.A., Minneapolis  
 Denise Susan Rodriguez, St. Paul,  
 with distinction  
 Michael P. Rosewall, Evanston,  
 Ill., with distinction  
 Richard Francis Rowan, St. Paul,  
 with high distinction  
 Catherine Marie Rowe,  
 Minnetonka  
 Anne Elizabeth Ruggieri, Upper  
 Montclair, N.J., with distinction  
 Laurie Elizabeth Running,  
 Minneapolis, with distinction  
 Kathleen Angela Ryan,  
 Bloomington, with distinction  
 Judith Kathleen Ryder,  
 Minneapolis, with distinction  
 Deborah Lynn Rye, Minneapolis  
 Lorraine Aiko Saito, Minneapolis,  
 with distinction  
 Marjorie Ellen Sandell,  
 Minneapolis  
 Mary Lynn Sangster, Fridley, with  
 high distinction  
 Cheryl Lynne Sargent, B.A.,  
 Austin  
 Phillip Mark Schaefer, Watertown,  
 Wis., with distinction  
 Gregory Robert Schildgen,  
 Minneapolis  
 Thomas Eliot Scholberg,  
 Ortonville, with distinction  
 Carol Ann Schultz, South  
 Hamilton, Mass., with  
 distinction  
 Susan Louise Schwanker,  
 Roseville, with distinction  
 Susan Jaye Schwartz, Bemidji,  
 with distinction  
 Debra Ann Seeber, Edina, with  
 distinction  
 Suzanne Kaye Seeley, St. Cloud,  
 with distinction  
 Nancy Lee Seeling, Grand Rapids,  
 with distinction  
 John August Sherman, Albert Lea  
 Julie Ann Shobe, Minneapolis,  
 with distinction  
 Susan Carol Sigerseith,  
 Minneapolis  
 Marjorie Siggelkow, Minneapolis,  
 with high distinction  
 Sue Ann Silker, A.A., Rochester,  
 with distinction  
 Nancy Marie Simon, Duluth, with  
 distinction  
 Daniel Joseph Smieja, Richfield,  
 with distinction  
 Diane Klaiss Snell, B.A., M.A.,  
 Minneapolis  
 Kathleen Elisabeth Snelling, B.A.,  
 Marshfield, Wis.  
 Stephanie Marie Spethmann,  
 Robbinsdale, with high  
 distinction  
 Mary Margaret Spitzner, St. James,  
 with high distinction  
 Kim Morel Stanforth, Kokomo,  
 Ind.  
 Allen Myron Stern, St. Louis Park,  
 with high distinction  
 Penny Marie Stiles, Richfield, with  
 distinction  
 Ann Heinselmann Stolee, B.A.,  
 Grand Rapids  
 Mark Allen Storry, Minneapolis,  
 with distinction  
 Katherine Louise Stoutenburgh,  
 Edina, with distinction  
 Jeanne Renee Sundt, Edina, with  
 distinction  
 Jeanne Carol Swenson, B.A.,  
 Otisco  
 Shirley Ann Swenson, Lafayette,  
 with distinction  
 Bradley Scott Taylor, St. Paul,  
 with distinction  
 Jo A. Taylor, A.A., Edina, with  
 distinction  
 Jeffrey Cyril Theis, Cologne,  
 with distinction  
 Margaret Raymonde Thomas,  
 Minneapolis, with distinction  
 Jean Marie Thompson, A.A.,  
 Edina, with distinction  
 Steven Allen Thomsen,  
 Minneapolis  
 Diane Marie Thorsen,  
 Minneapolis, with high  
 distinction

*Sherrie Lynn Thorson, A.A.,  
 Edina, with distinction*  
*Bonnie Jill Toberman,  
 Minneapolis, with distinction*  
*Donna Lee Voth, B.A., Hopkins*  
*Patricia Louise Wagner, Savage*  
*Patricia Ann Warnert, West St.  
 Paul, with distinction*  
*Laurie Jo Wensing, A.A.,  
 Minneapolis*  
*William E. White, B.A.,  
 Minneapolis*  
*Janice Ruth Whitnah, White Bear  
 Lake, with distinction*  
*Terri Wiener-Nesvold, Torrance,  
 Calif., with high distinction*

*Arja Kristiina Wilenius,  
 Minneapolis, with distinction*  
*Kathleen Jane Wilken, A.A., St.  
 Paul, with distinction*  
*Laurie Ann Williams, A.A., North  
 St. Paul, with distinction*  
*Kevin Eugene Winn, Brooklyn  
 Park*  
*Susan Jill Wirth, St. Paul*  
*Victoria Lynn Wirtz, A.A., Elk  
 River, with distinction*  
*Mary J. Wolf, St. Paul*  
*Susan Elizabeth Wood, Austin*  
*Dana Charles Zelenakas, B.A.,  
 Brattleboro, Vt.*  
*John Donald Zschunke, Redwood  
 Falls, with distinction*

### Master of Education

*Richard Lee Alm, B.S.,  
 Minneapolis*  
*Douglas Barton Anderson, B.A.,  
 Hutchinson*  
*Ellen Marie Anderson, B.S.,  
 Flourtown, Pa.*  
*Corinne D. Andrews, B.S.,  
 Shoreview*  
*Ruthann Irvin Barritt, B.S.,  
 Omaha, Neb.*  
*Joanne E. Root Benson, B.S.,  
 Hopkins*  
*Virginia Mae Besser, B.S.,  
 Columbia Heights*  
*Jacqueline Ann Bray, B.S.,  
 Minneapolis*  
*Timothy Paul Byrne, B.S.B., Coon  
 Rapids*  
*Karen Marie Carlson, B.A.,  
 Minneapolis*  
*George Kenneth Coklas, B.S., St.  
 Louis Park*  
*Nancy Meyer Cooper, B.A.,  
 Minneapolis*  
*Margaret Alice Corens, B.S.,  
 Wayzata*  
*Marie Jean Delahunt, B.S.,  
 Stillwater*  
*Kathryn Rickord Diaz, B.S.,  
 Minneapolis*  
*Diane Marie Fraser, B.S., New  
 Hope*

*Marie Diane Friederich, B.A.,  
 Minneapolis*  
*John George Georgolopolos, B.A.,  
 Minneapolis*  
*Diane Lucille Greene, B.A., St.  
 Paul*  
*Elizabeth Ann Halden, B.S.*  
*Kathleen Joan Hamalainen, B.S.,  
 Finlayson*  
*Barbara Ann Hart, B.S.,  
 Minneapolis*  
*Emily Rose Hausman, A.B., South  
 Ryegate, Vt.*  
*Jeanne Marie Herman, B.S.,  
 Strum, Wis.*  
*Robert Francis Holewa, B.S., St.  
 Anthony Village*  
*Emily Jean Johnson, B.S., Antigo,  
 Wis.*  
*Judy Carol Joslyn, B.S., Anoka*  
*Patricia Ruth Kranz, B.S., East  
 Rochester, N.Y.*  
*Janice Cole Krick, B.A., St. Paul*  
*Judith Naomi Linse, B.S., New  
 Brighton*  
*Murray Frederick Macklem,  
 Winnipeg, Manitoba, Canada*  
*Jacqueline Cheryl Mannering,  
 B.A., St. Paul*  
*Eloise Lorraine Miller, B.S.,  
 Anoka*

Gayle L. Miller, B.S., Brooklyn  
Park  
Linda Sue Morgan, B.A., St. Paul  
John Thurston Olsen, B.S.,  
Scandia  
Terry Wayne Olson, B.A., B.A.,  
Wayzata  
Beverly Jean Otto, B.S., Elko  
Marjorie Ellen Penner, B.S.  
Patricia R. Peterson, B.S.,  
Minneapolis  
Katherine N. Radtke, B.A.,  
Shakopee  
Marie Magdalen Rohling, B.S.,  
Brooklyn Park

Sandra Lee Rud, B.A., B.S., Anoka  
Sandra Jean Running, B.A.,  
St. Paul  
Gail Anne Saari, B.S., Edina  
Patricia Jo Shoop, B.S.,  
Minnetonka  
Helen Edrie Skare, B.S., Onamia  
Susan Marie Pederson Slater, B.A.,  
Roseville  
Gail Michelle Swor, B.A., Circle  
Pines  
Cecilia Vega de Poppe, Lima,  
Peru  
John Clarence Zwieg, B.S., Forest  
Lake

## COLLEGE OF EDUCATION AND COLLEGE OF AGRICULTURE

### Bachelor of Science

*Alan Edward Anderson, Barnum,  
with distinction*  
*William David Arndorfer, A.A.S.,  
Willmar, with distinction*  
*Dennis Paul Bjorklund, Nicollet,  
with high distinction*  
*Allan Russell Feirer, Springfield,  
with distinction*  
Douglas R. Fjerstad, Fosston  
Allan Bruce Foster, Slayton  
*Robert Alan Gerber, A.A., Kiester,  
with high distinction*  
Mark Howard Highby, Lamberton

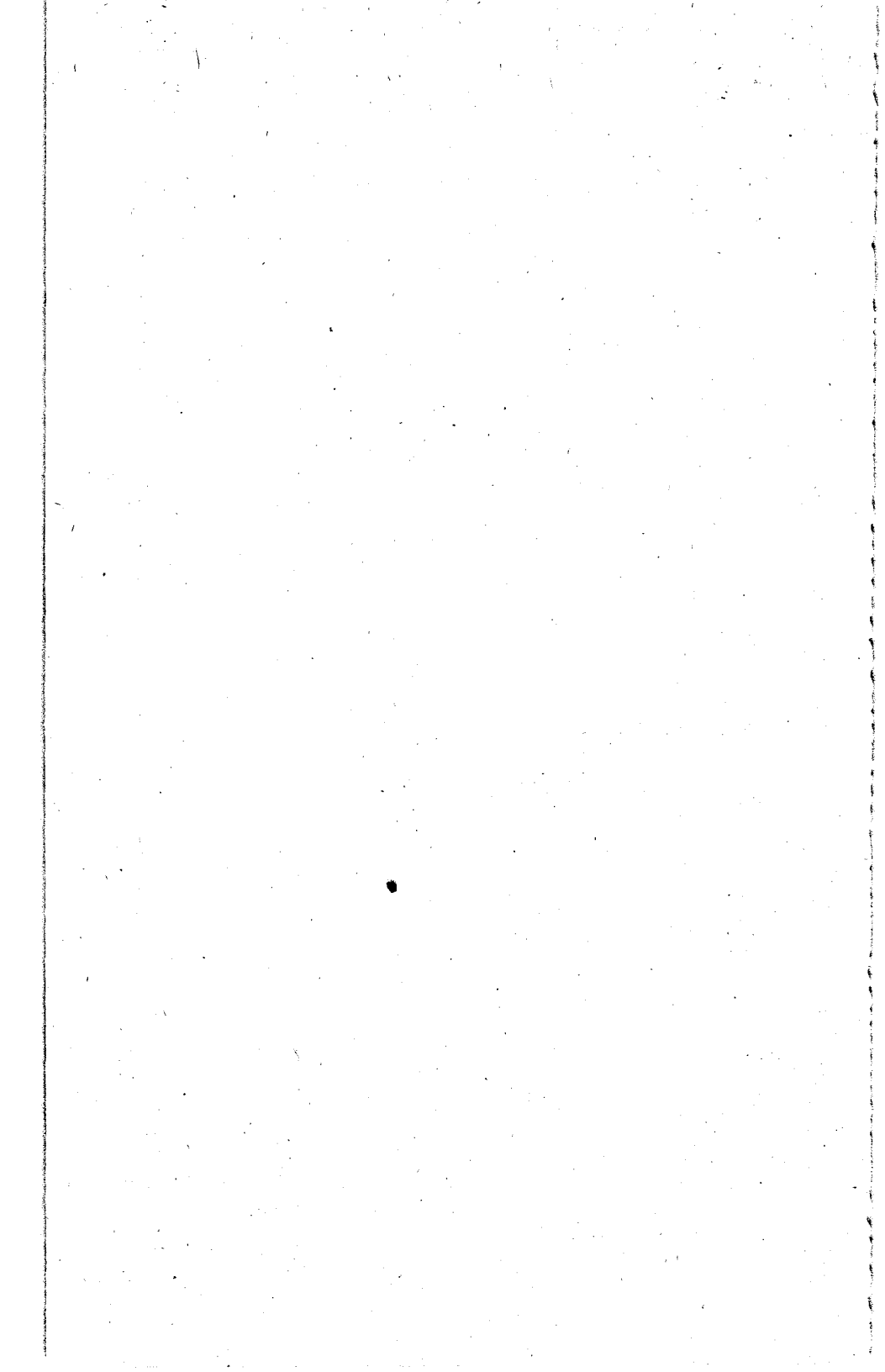
*Andrew Virgil Holdvogt, A.A.,  
Melrose, with distinction*  
*Robert Bruce Marzolf, with  
distinction*  
Peter A. Neigebauer, Owatonna  
Gordon W. Pennertz, A.S.,  
Litchfield  
Robert Gene Rick, Litchfield  
Patricia Anne Sandager, Marine on  
St. Croix  
Craig Lee Schmidt, Watertown  
Dale Allan Vacinek, Pine City  
*Julian Andrew Yerbich, A.A.S.,  
Puposly, with high distinction*

## COLLEGE OF EDUCATION AND COLLEGE OF HOME ECONOMICS

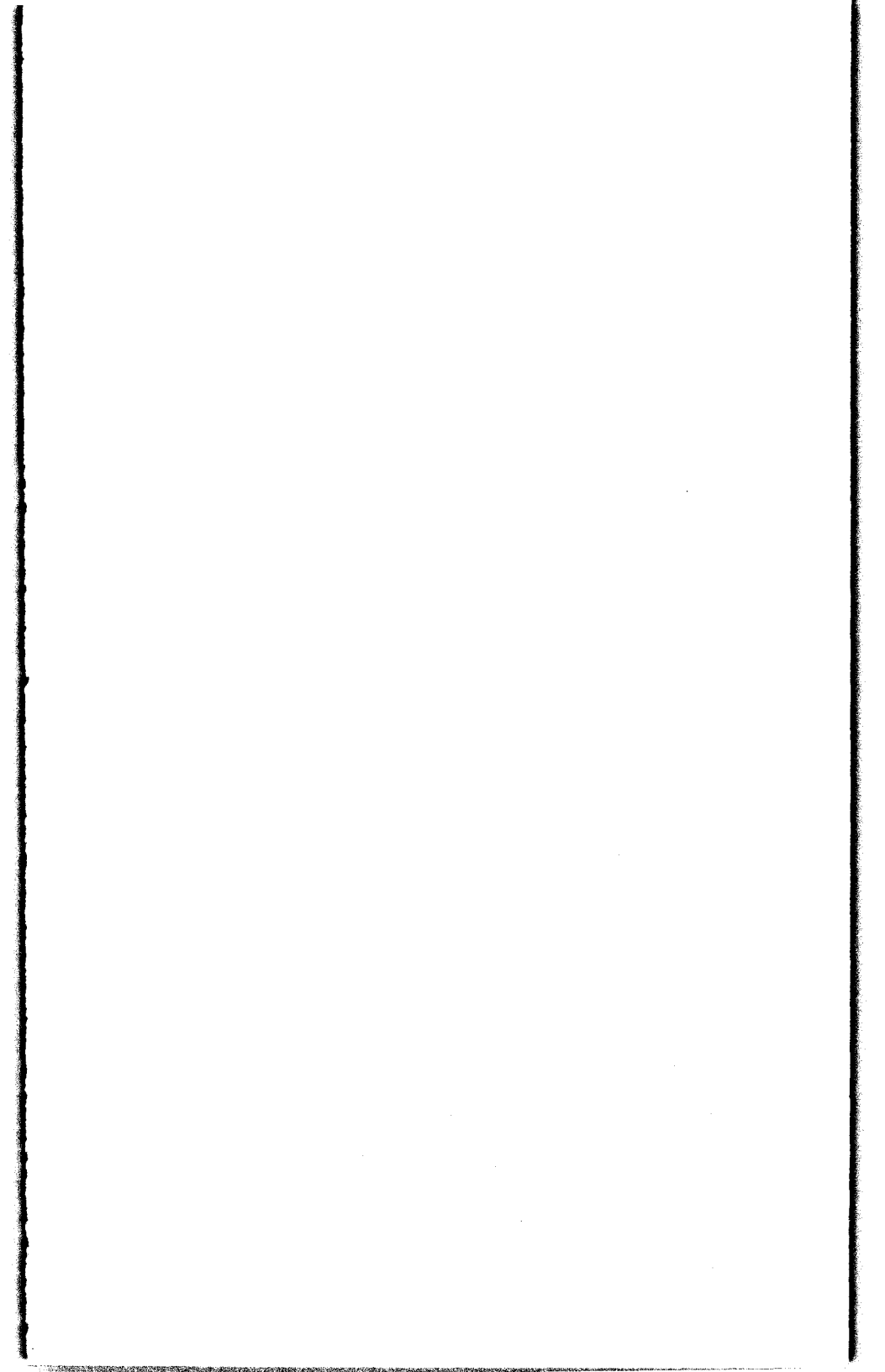
### Bachelor of Science

*Linda Lea Becker, Olivia, with  
high distinction*  
*Sheryl Margaret Hintzman,  
Brooklyn Center, with high  
distinction*  
*Laurie Jean Koelsch, Rochester,  
with distinction*

*Ann Lucy Mayerle, A.S., South St.  
Paul, with distinction*  
Lynda Sue Miller, A.A., Freeborn  
*Anita Lynn Pierre, Bloomington,  
with distinction*  
Shirley Ann Seiffert, Anoka







*Additional copies of this program are available from the Education Career Development Office, College of Education, 1425 University Avenue S.E., University of Minnesota, Minneapolis, Minnesota 55414.*

*Printed on recycled paper*