

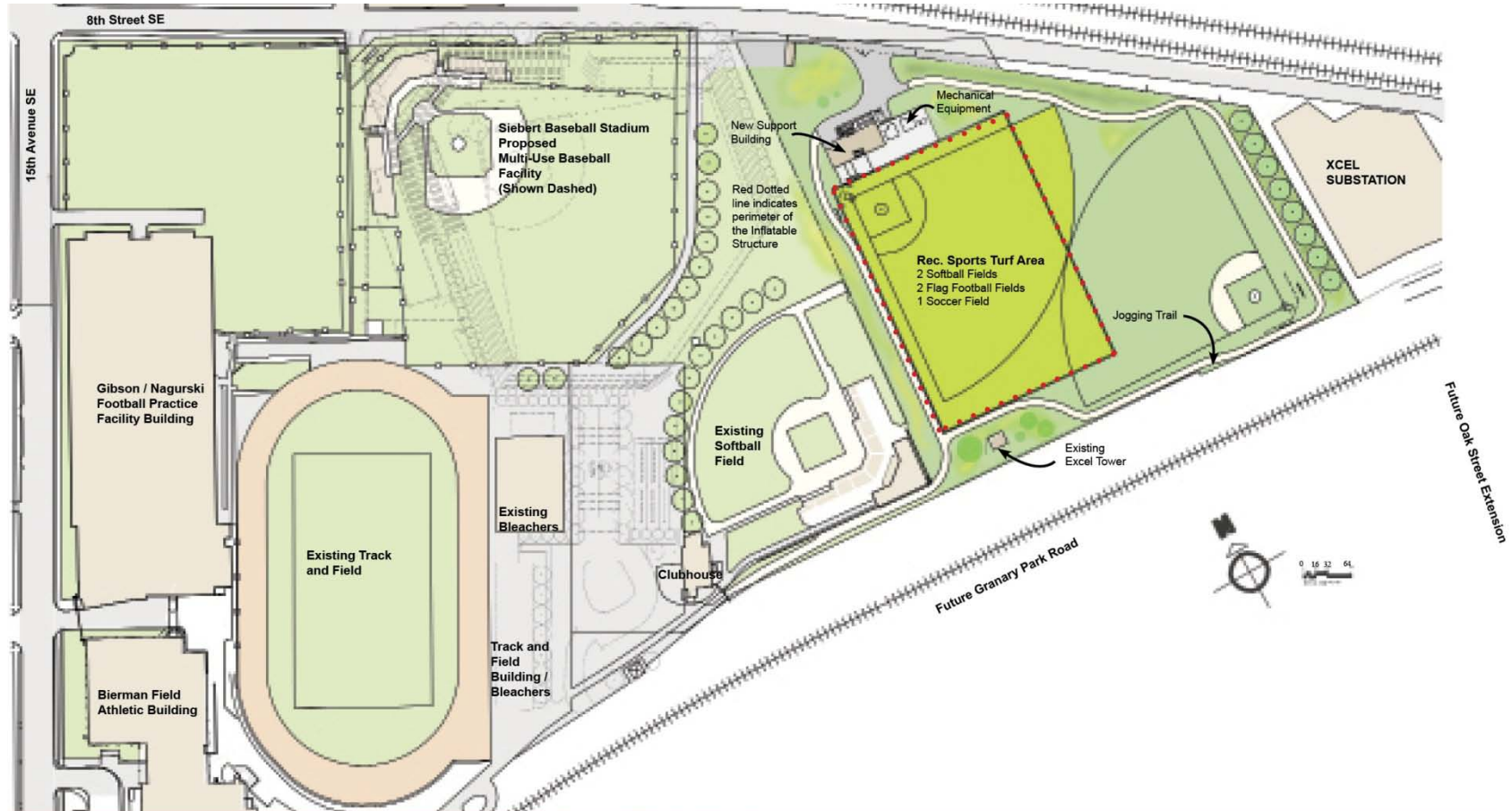


UNIVERSITY OF MINNESOTA

**East Bank Recreation Fields
Inflatable Structure and Field
Improvements**

Minneapolis Campus

Location Map



Project Rationale

- Inflatable structure with synthetic turf field will meet programmatic demand for intramural and sports club teams including soccer, flag football, ultimate disc, rugby and lacrosse.
- From November to April recreational sports fields are unused due to weather, forcing club teams off campus.
- The inflatable structure will be in place and usable from November to April, allowing a variety of sports and activities to occur during these months.
- The synthetic field within the inflatable structure will be the equivalent to building 6-7 natural fields because weather and over use limit activity on grass fields.

Project Rationale: Capital Plan Metrics

- Ensure student success by:
 - Creating facilities directly related to recruiting, educating, supporting, and graduating students
 - Creating facilities that enhance student satisfaction

- Recognize current extraordinary financial realities by:
 - Honoring projects that have an identified source of payment for debt costs

Project Description

- Inflatable structure, approximately 255 feet X 360 feet and 2,400 square foot support building with restrooms, day lockers, service and emergency access and mechanical space.
- Synthetic turf field, with drain tile system within the inflatable structure, configurable to accommodate a minimum of six different sports.
- Improvement of remaining outdoor natural grass turf fields, including cinder running path, storm water management features, landscaping and soil corrections.
- New electric service infrastructure and field lighting.

Project Description - continued

□	Anticipated Total Project Final Cost	
■	Construction Cost	\$6,265,155
■	Non Construction Cost	<u>1,015,345</u>
■	Total Project Cost	\$7,280,500
□	Capital Funding	
■	University Debt – Supported by Recreational Sports Student Fees	\$7,280,500

Project Description - continued

- Anticipated Completion:
 - December 2011

- Estimated Annual Operating Costs:
 - Additional annual operating and maintenance cost, including custodial, utilities and maintenance, annual setup and take down, paid by the Recreational Sports Department, are estimated to be \$200,000.

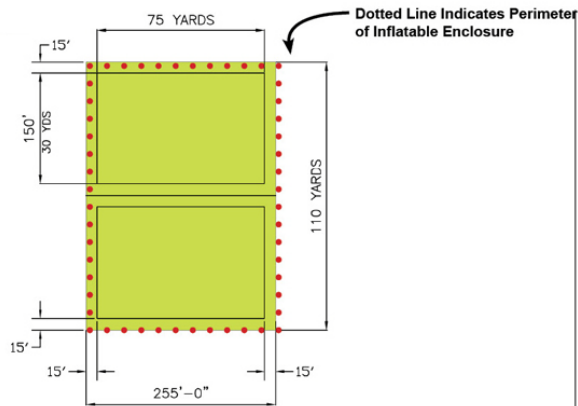
- Architect:
 - Studio Five Architects, Minneapolis

- Project Delivery Method:
 - Construction Manager at Risk
 - JE Dunn Construction

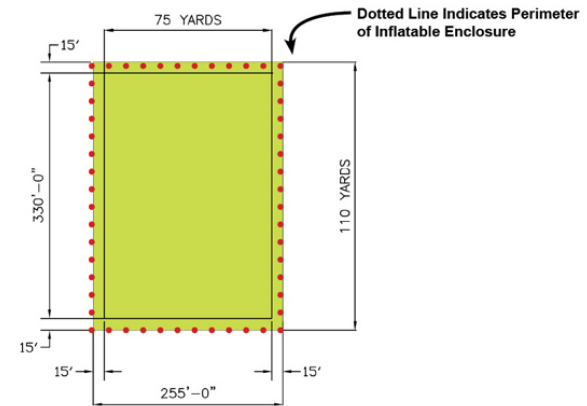
Building Site Plan



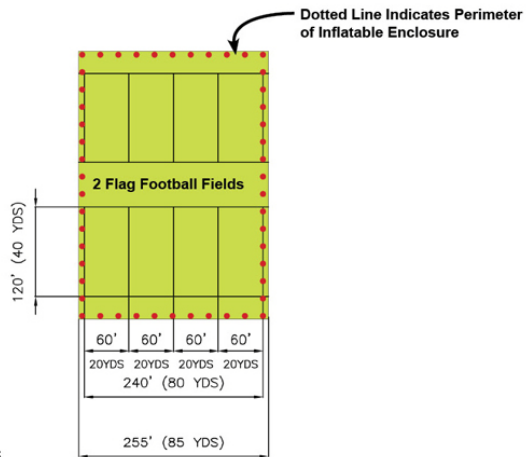
Field Configurations



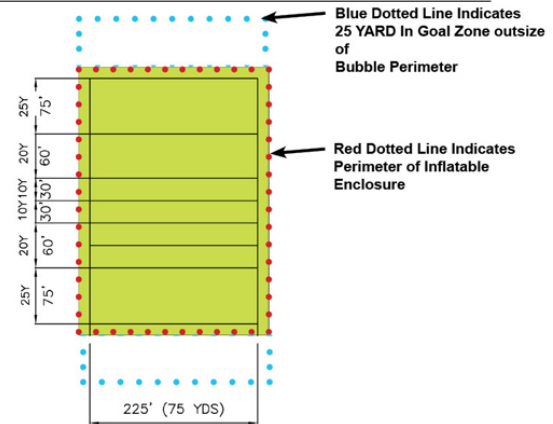
2 SOCCER FIELDS
30 YARDS X 75 YARDS



1 SOCCER FIELD
110 YARDS X 75 YARDS

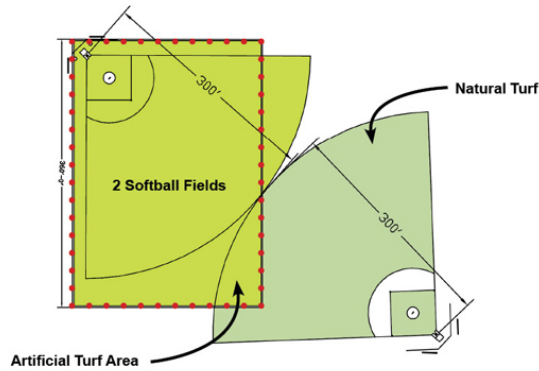


FLAG FOOTBALL
80 YARDS X 40 YARDS PLUS
5 YARD X 10 YARD BUFFER ZONE

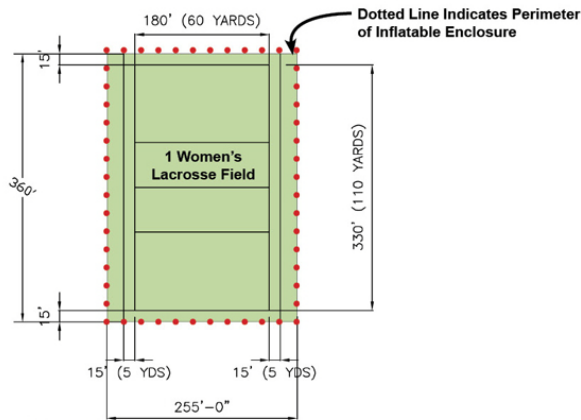


RUGBY FIELD
160 YARDS X 75 YARDS

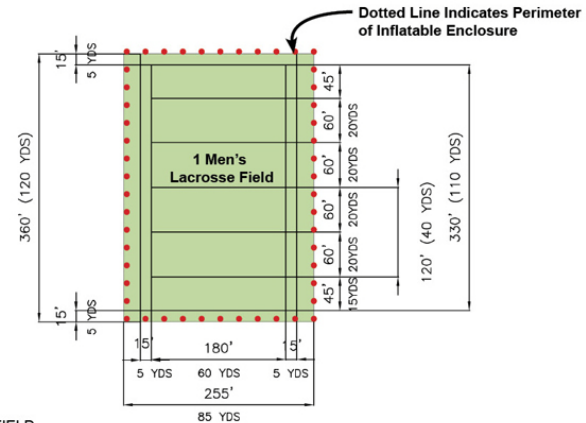
Field Configurations



2 SOFTBALL FIELDS

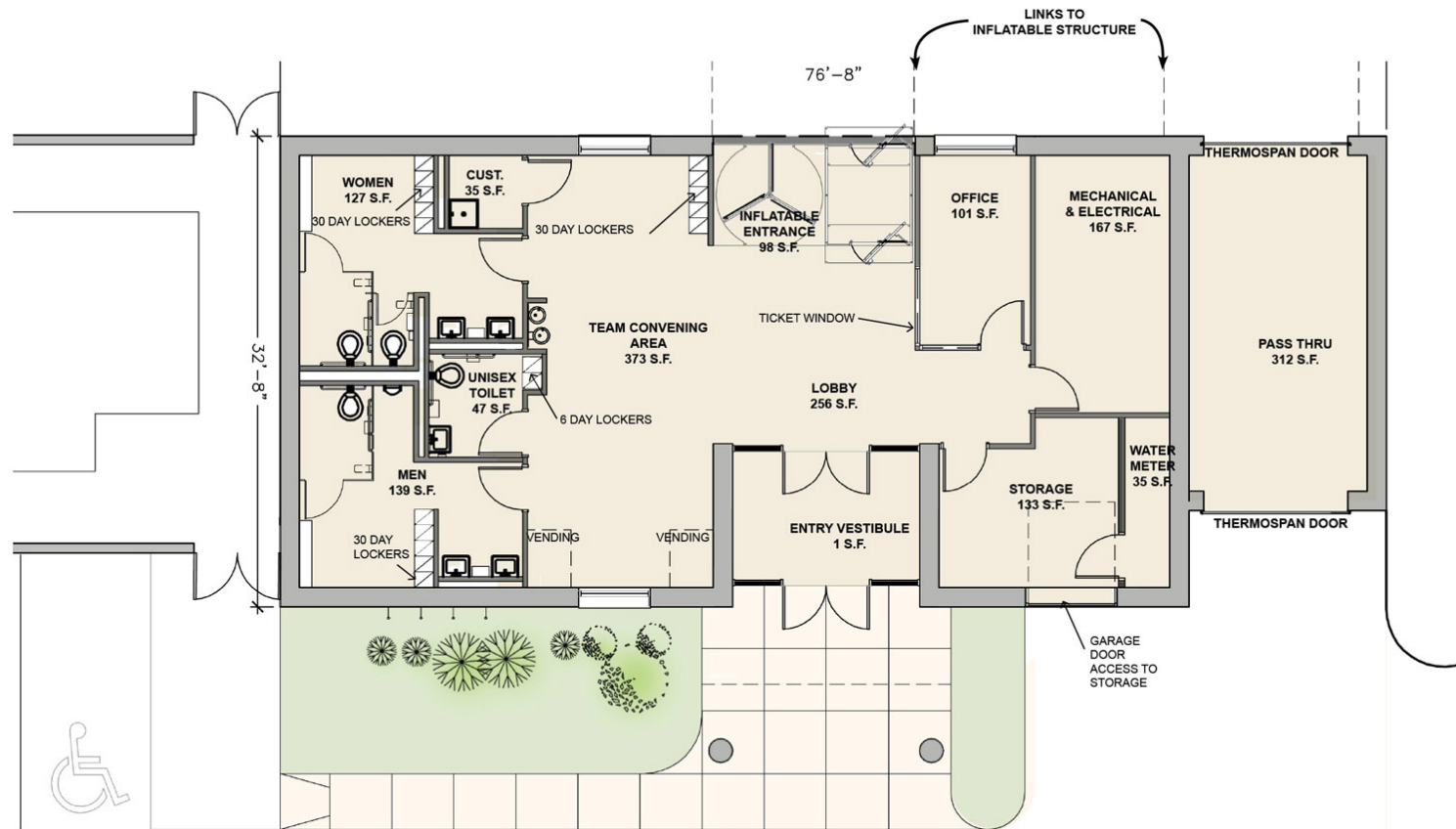


WOMEN'S LACROSSE FIELD
110 YDS X 60 YDS



MEN'S LACROSSE FIELD
110 YDS X 60 YDS

Floor Plans



Building Exterior



EXTERIOR FINISH TO BE COMPOSED OF A COMBINATION OF BURNISHED AND ROCK FACE CONCRETE MASONRY UNITS.

0 16' 32' 64'

Aerial View





UNIVERSITY OF MINNESOTA

**East Bank Recreation Fields
Inflatable Structure and Field
Improvements**

Minneapolis Campus