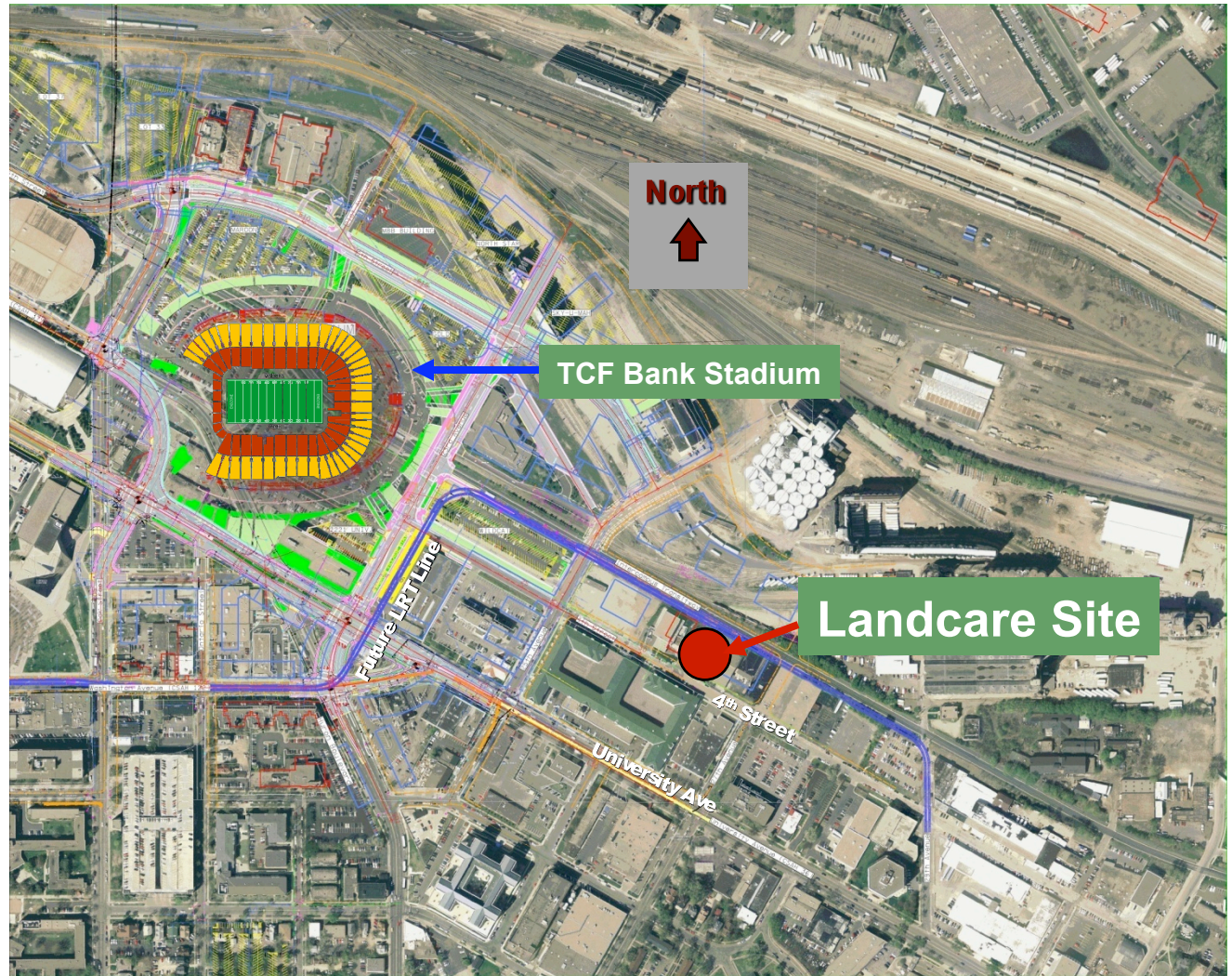


LANDCARE SERVICES BUILDING EAST GATEWAY DISTRICT UNIVERSITY OF MINNESOTA TWIN CITIES CAMPUS

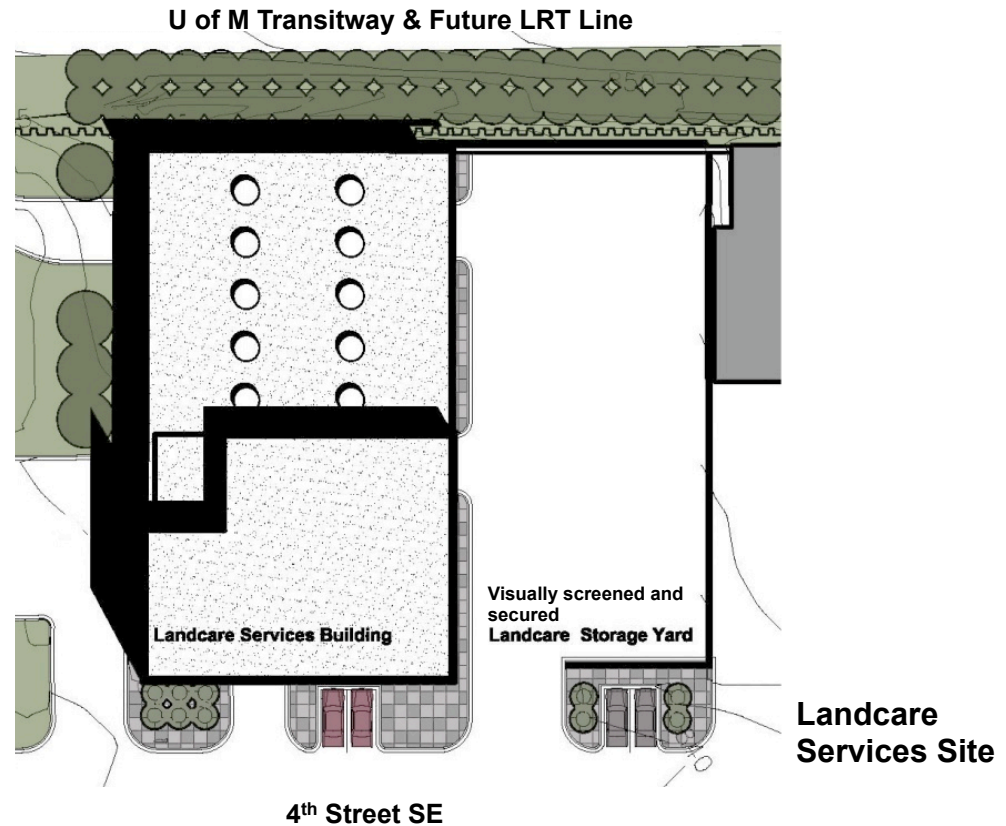
Landcare Services Building

Location Map



Landcare Services Building

Site Plan



Project Rationale

- The University's Landcare operations was moved from their last permanent home in 1990 in order to build Mariucci Arena.
- The current temporary facility is scheduled for demolition when the Central Corridor Light Rail Transit line is constructed.
- Numerous alternative facility solutions have been studied, but none have satisfied the space and location requirements.
- The location of the new facility will place Landcare and Facilities Management core operation functions adjacent to the Minneapolis campus, maximizing their efficiency.

Project Description

- **The Landcare Services Building includes:**
 - A multi-purpose training room for seating up to 48 staff
 - Ten administrative workstations with room to expand to 12
 - Locker areas, toilets and showers
 - Open and flexible vehicle storage areas
 - Vehicle Maintenance bay
 - Large secured tool storage rooms
 - Warehouse storage accessible from interior or exterior
 - Security fencing, limiting sightlines into the yard area
 - Sustainable features address indoor air quality, day lighting, storm water management, and brown field redevelopment

Project Description

- Landcare Services requires a screened & securable yard area for:
 - Fuel storage for mowers, tractors, snowblowers
 - Plant storage area for temporary staging
 - Mulch mixing bins
 - Seasonal materials, tables, chairs, and equipment storage
 - Various types of landscaping materials, rocks, compost, aggregates

- The Landcare Services Building is located on the western edge of the site to allow expansion of the facility's yard to the east.

Landcare Services Building

Project Description

<input type="checkbox"/>	Cost Estimate		
<input type="checkbox"/>	■ Construction	\$	4 million
<input type="checkbox"/>	■ Non-construction		<u>1 million</u>
<input type="checkbox"/>	■ Total Project Cost	\$	5 million
<input type="checkbox"/>	Capital Funding:		
<input type="checkbox"/>	■ University Debt	\$	5 million

Project Description

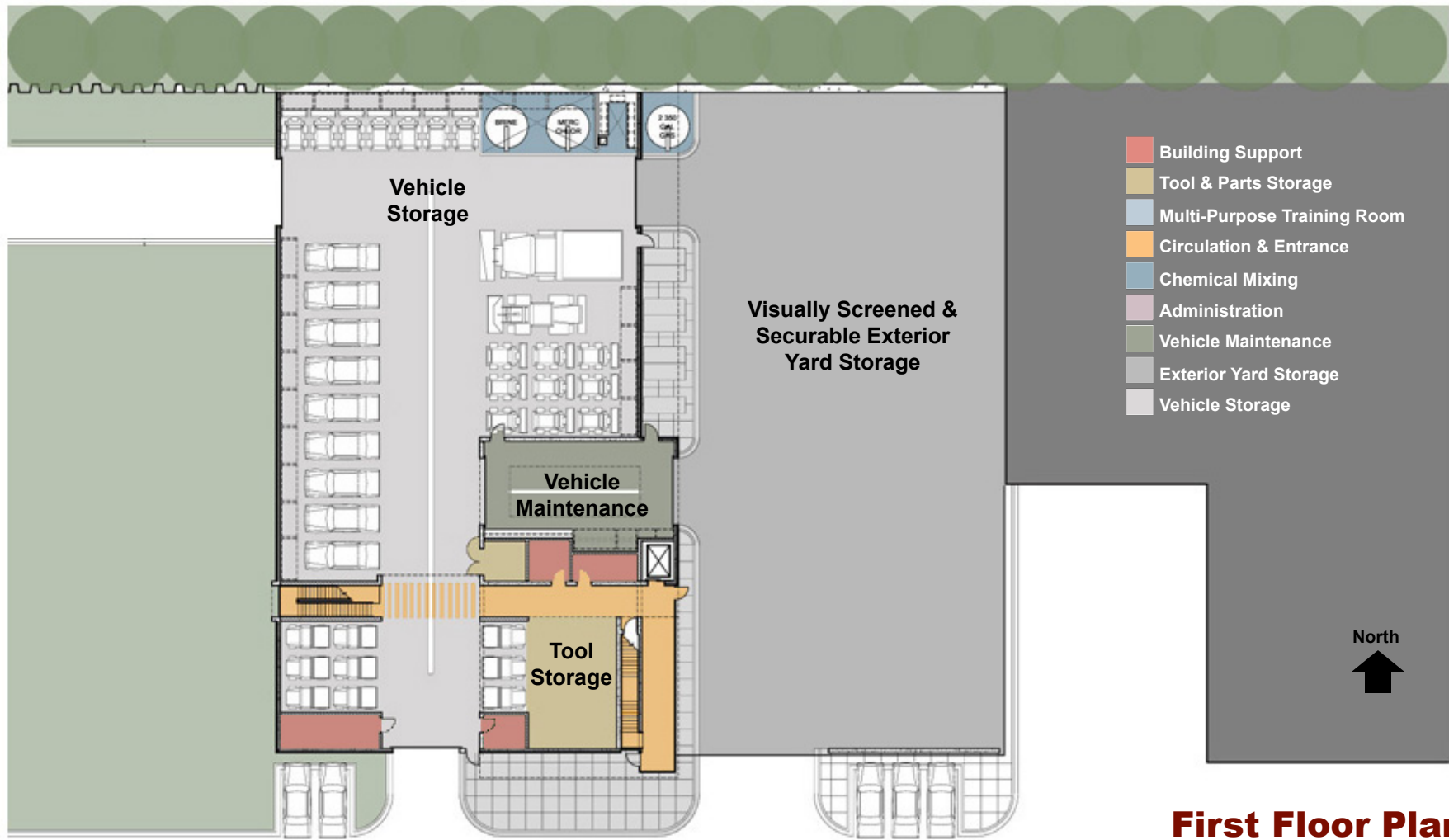
- Anticipated Completion:**
 - **May 2010**

- Estimated Annual Operating Costs:**
 - **\$ 155,000**

- Architect:**
 - **Architect of Record: DLR Group**

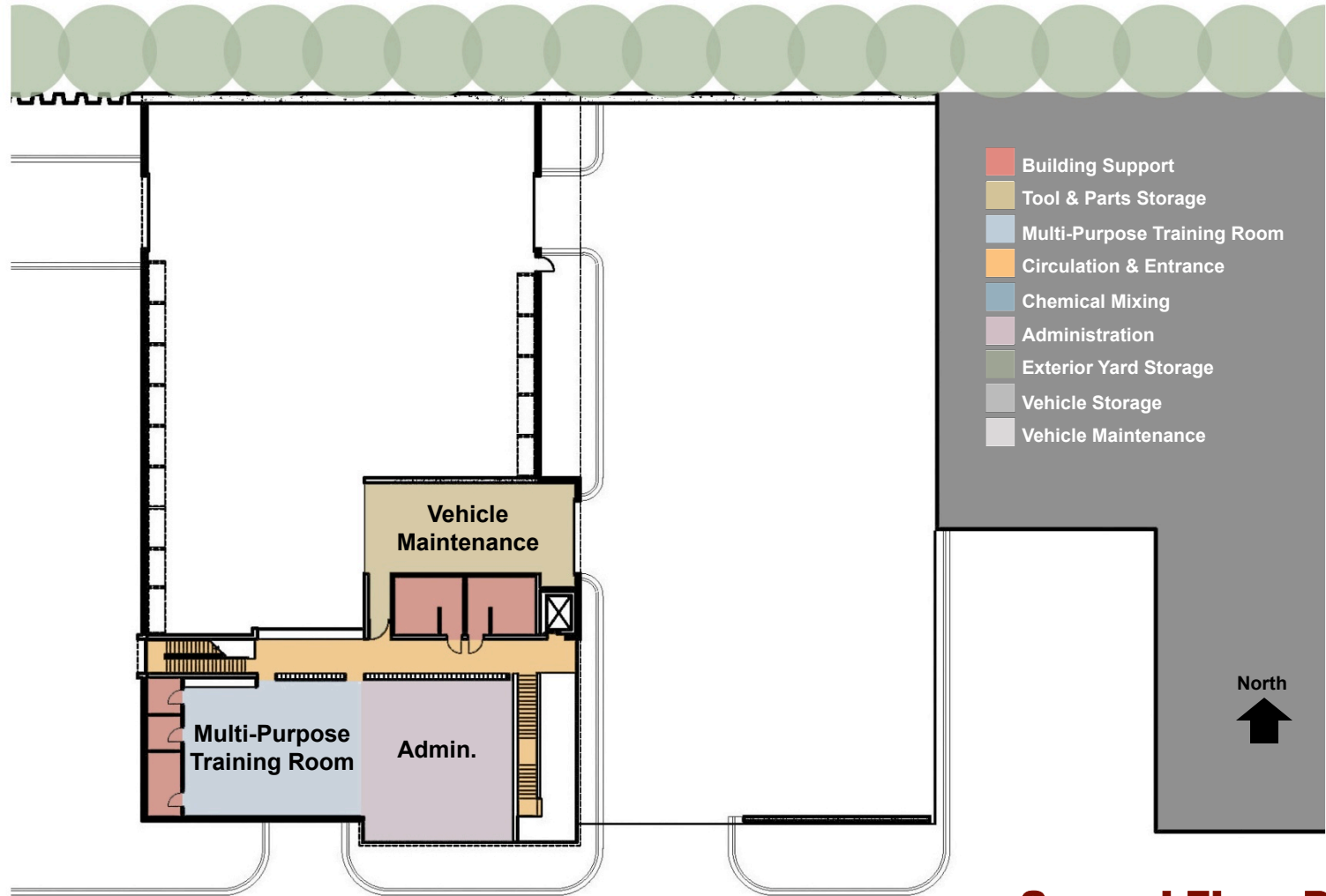
- Project Delivery Method:**
 - **Design / Bid / Build**

Landcare Services Building



First Floor Plan

Landcare Services Building



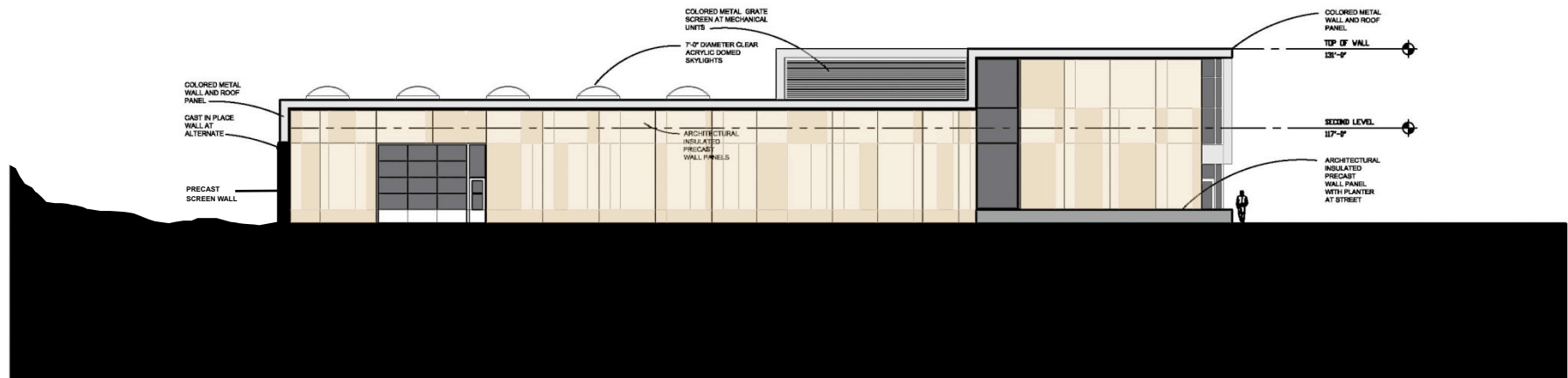
Second Floor Plan

Building Exterior



South Elevation from 4th Street

Building Exterior



West Elevation from MAST

LANDCARE SERVICES BUILDING EAST GATEWAY DISTRICT UNIVERSITY OF MINNESOTA TWIN CITIES CAMPUS