



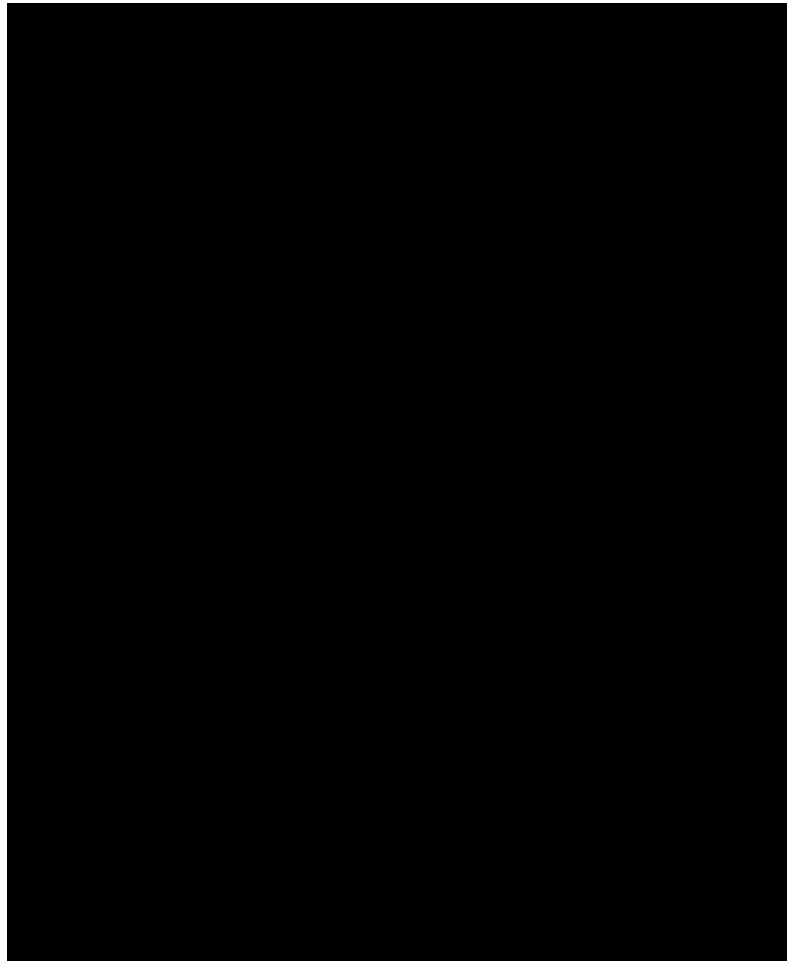
UNIVERSITY OF MINNESOTA

Community Services Building

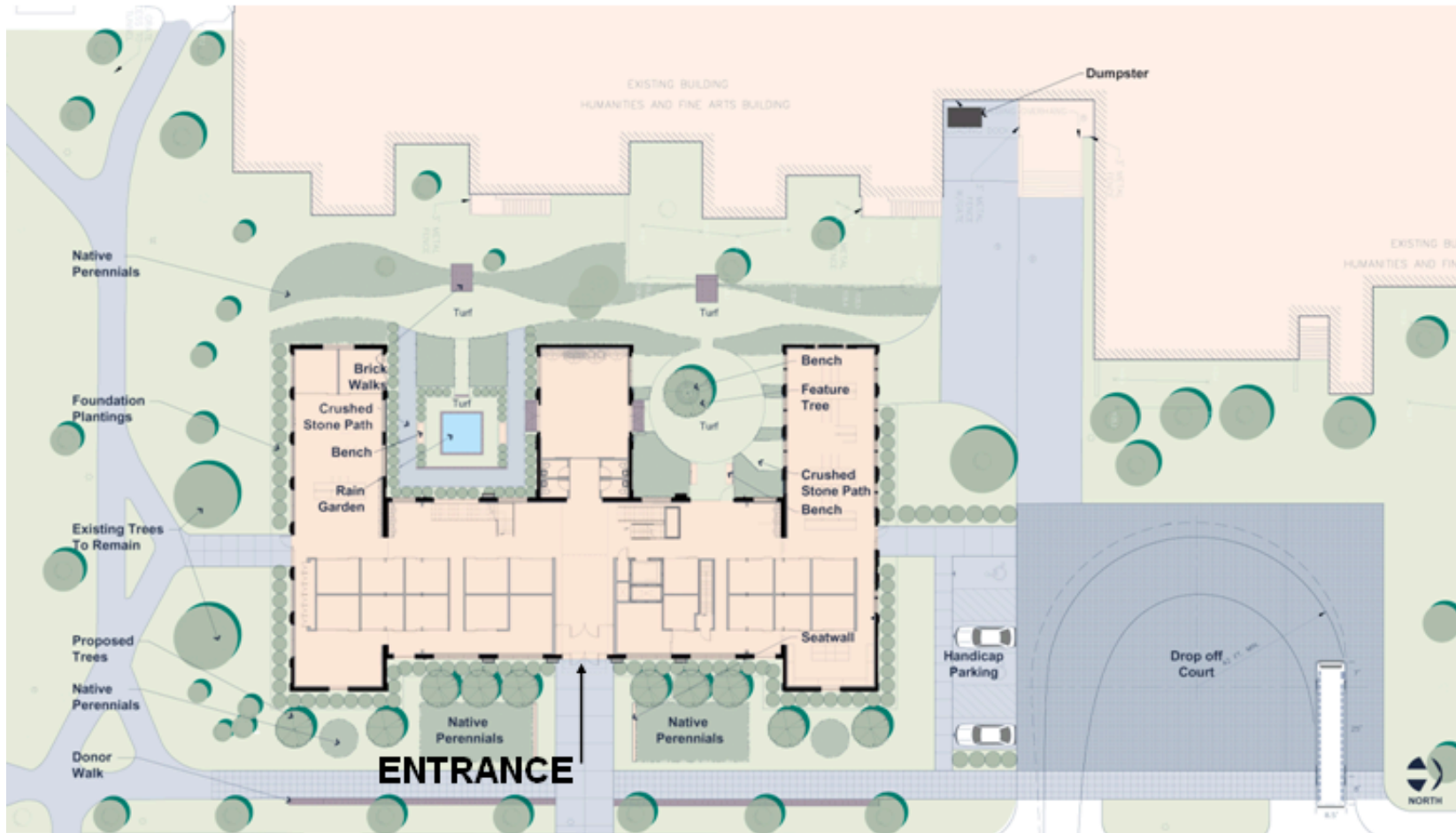
Morris Campus



Location Plan



Site Plan





Project Rationale

- ❑ To strengthen UMM's enrollment and advancement functions by creating a campus **Gateway** for external visitors, including prospective students and their families, alumni, benefactors, and friends.
- ❑ Co-locate Admissions, External Relations, and Continuing Ed.
- ❑ Update current building to meet accessibility and energy guidelines.
- ❑ Further the sustainable goals of UMM be striving to obtain a LEED Gold building.



Project Description

- Complete interior architectural, mechanical and electrical renovation of the 18,000 Gross Square Foot Community Services Building (11,800 assignable square feet):
 - Building is structurally sound only minor structural work required
 - Complete interior demolition and reconstruction with state of the art offices and conference facilities
 - Construct a mechanical vault, utility tunnel and utility infrastructure connected to campus chilled water and steam distribution systems
 - Fire and life safety systems will be incorporated
 - Hazardous materials will be abated
 - North end drop off court and bus turn-around which includes accessible parking.
 - West side renovated historic pond. New sculpture garden. New sustainable plantings.

- Project Cost:

■ Construction Cost	\$5,900,000
■ Non Construction Cost	<u>1,600,000</u>
■ Total Project Cost	\$7,500,000



Project Description

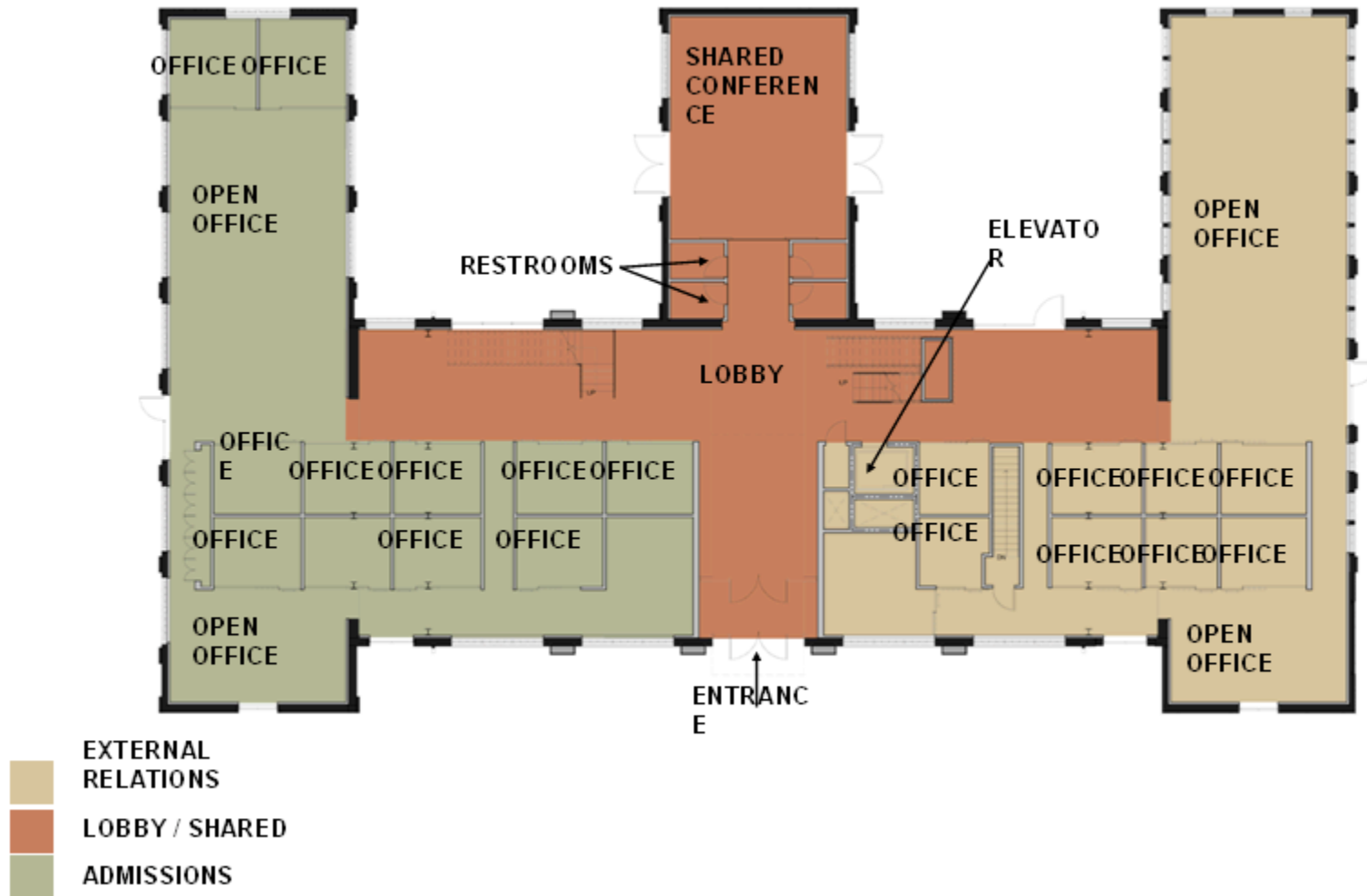
- Capital Funding:
 - 2008 State Capital Request \$5,000,000
 - University Funds 2,500,000
 - Total \$7,500,000

- Anticipated occupancy:
 - Fall 2009

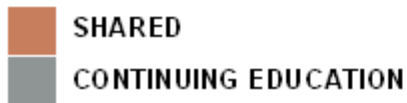
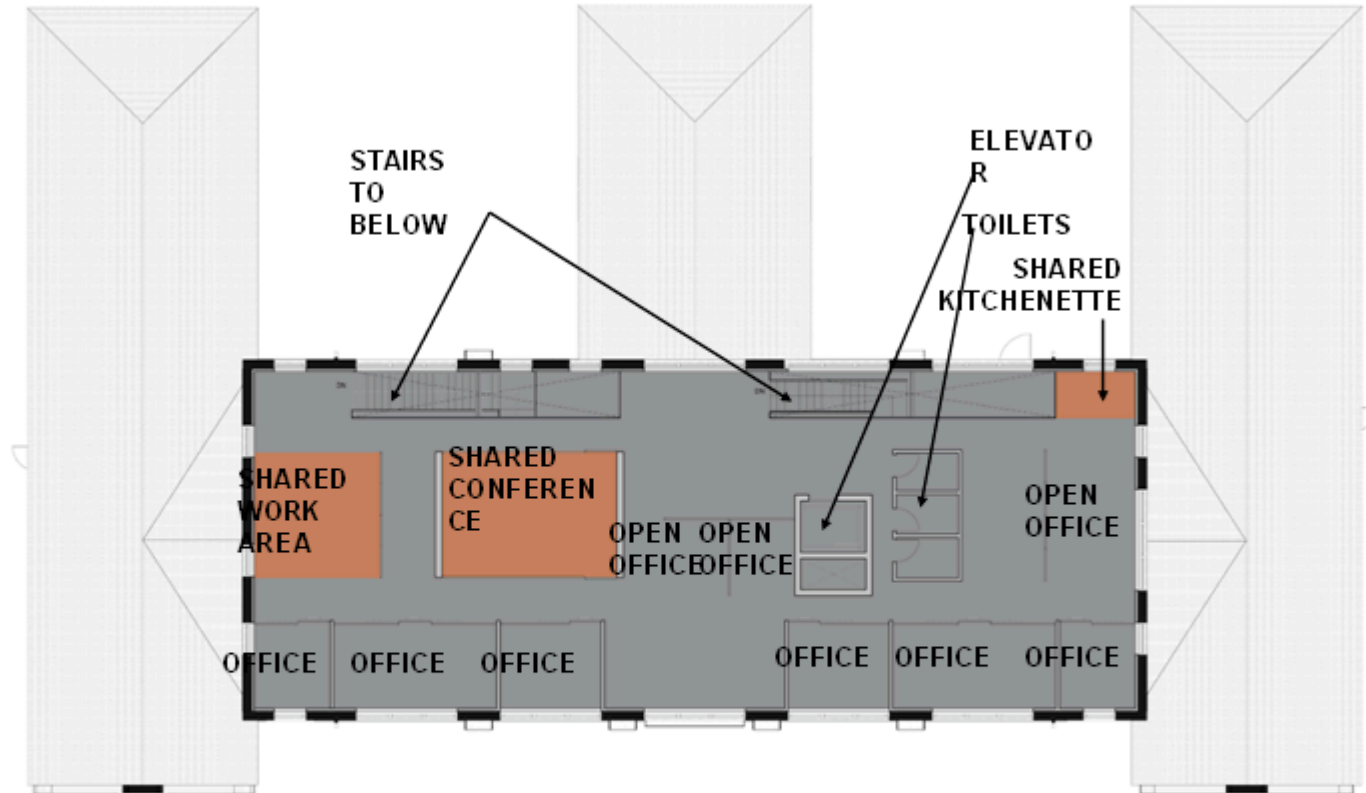
- Estimated annual operating cost:
 - \$95,000 per year

- Architect:
 - Meyer, Scherer & Rockcastle, Minneapolis

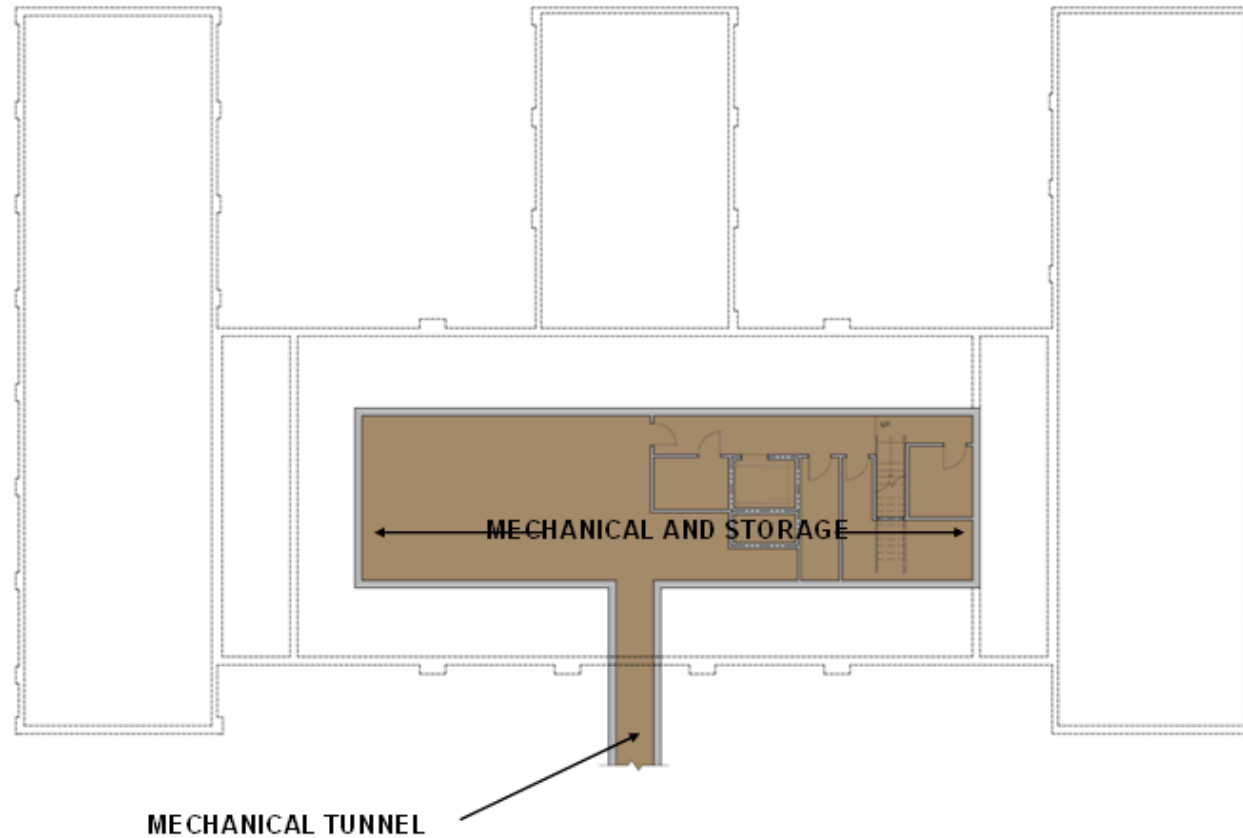
Main Level Floor Plan



Second Level Floor Plan



Basement Floor Plan

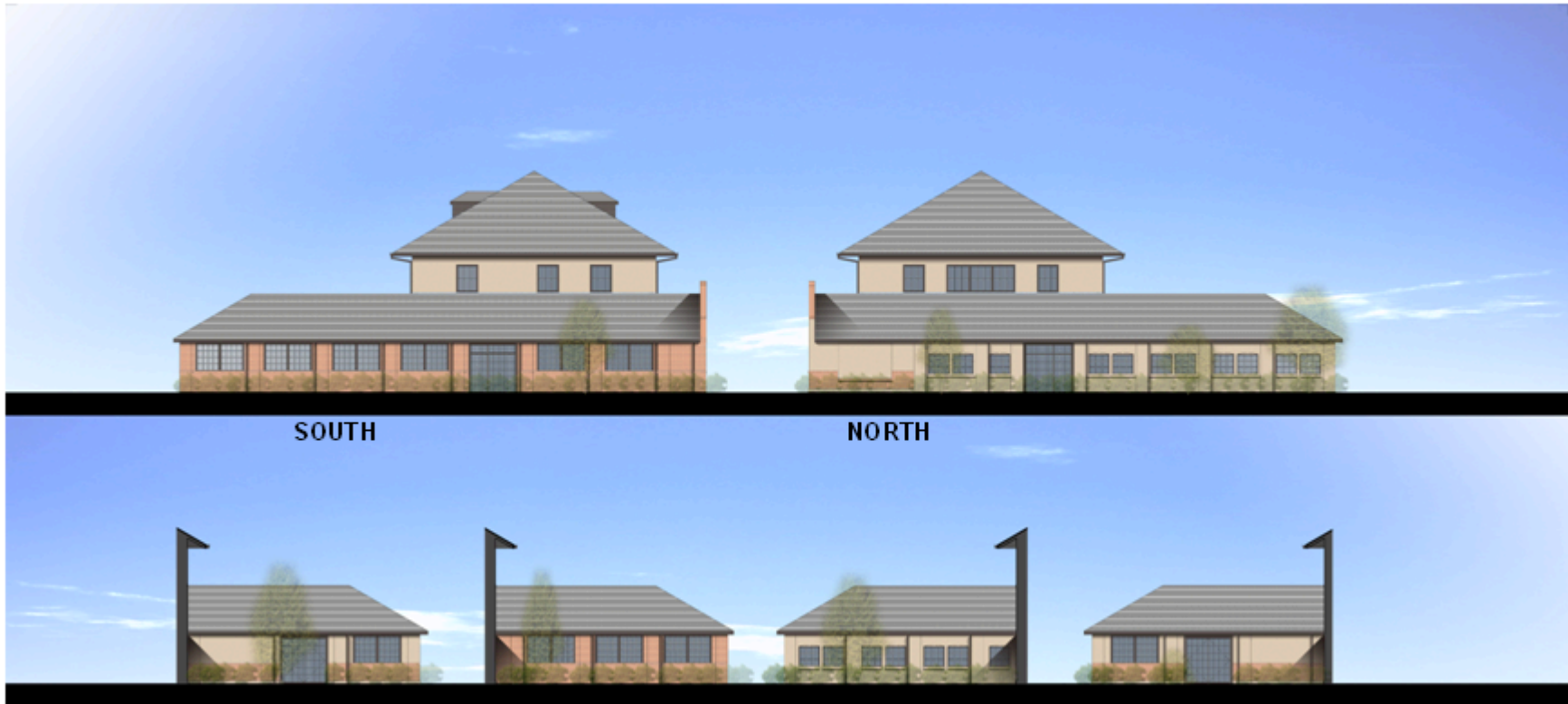


■ MECHANICAL

East & West Elevations



North & South Elevations



SOUTH

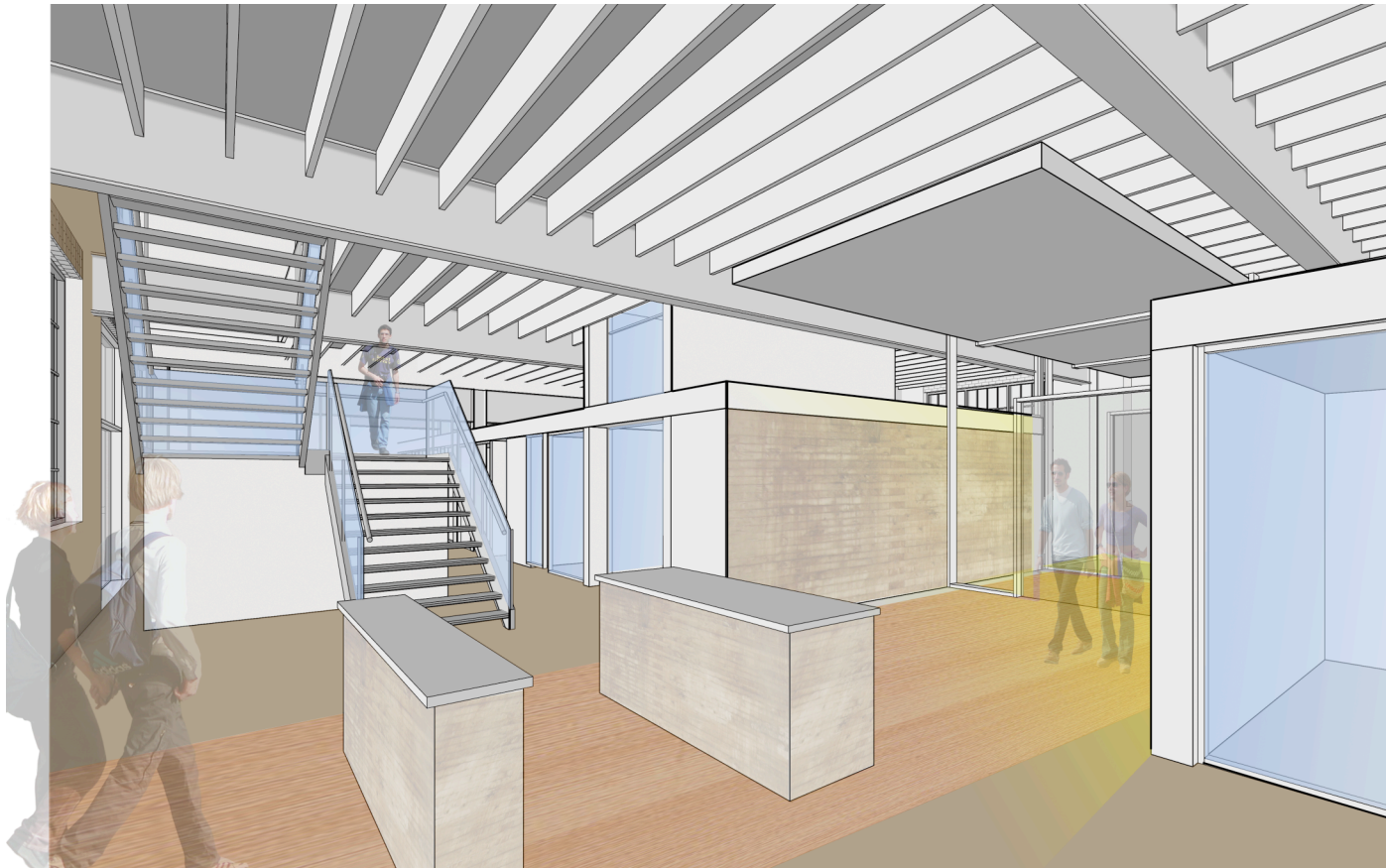
NORTH

WING ELEVATIONS

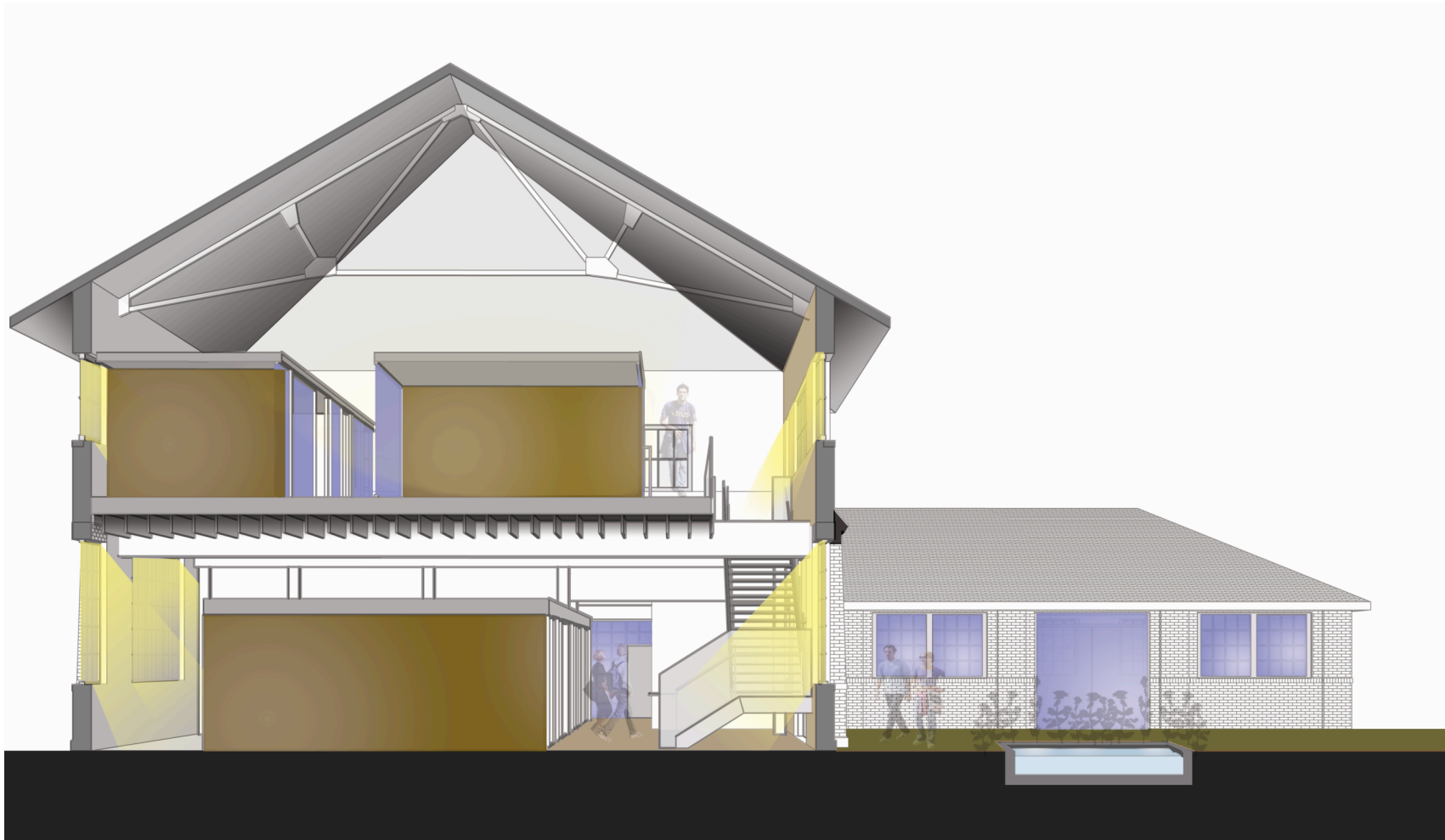
Main Entrance



Interior Perspective



Section





UNIVERSITY OF MINNESOTA

Community Services Building

Morris Campus