



UNIVERSITY OF MINNESOTA

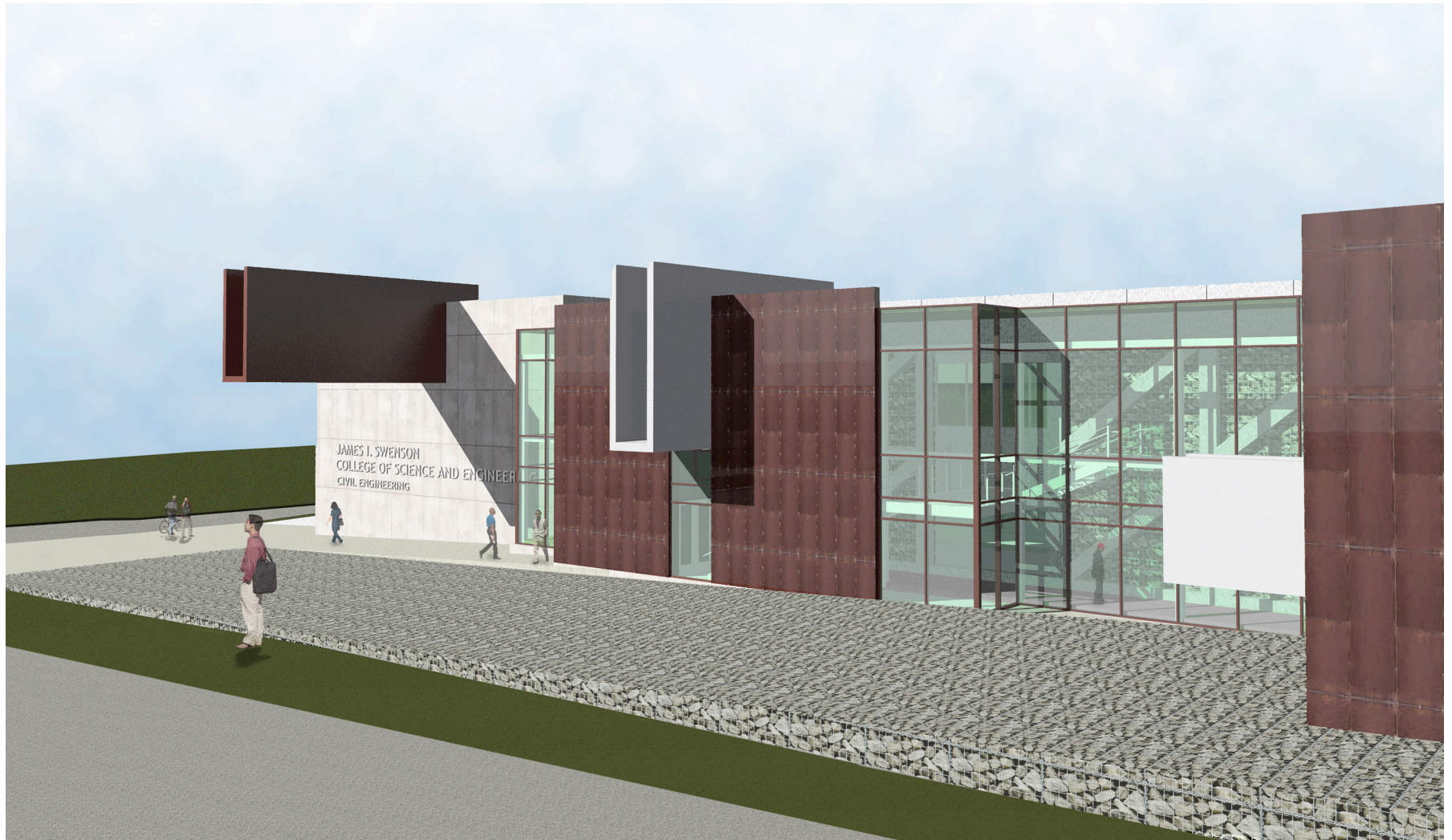
Civil Engineering Building

Duluth Campus

Building Exterior



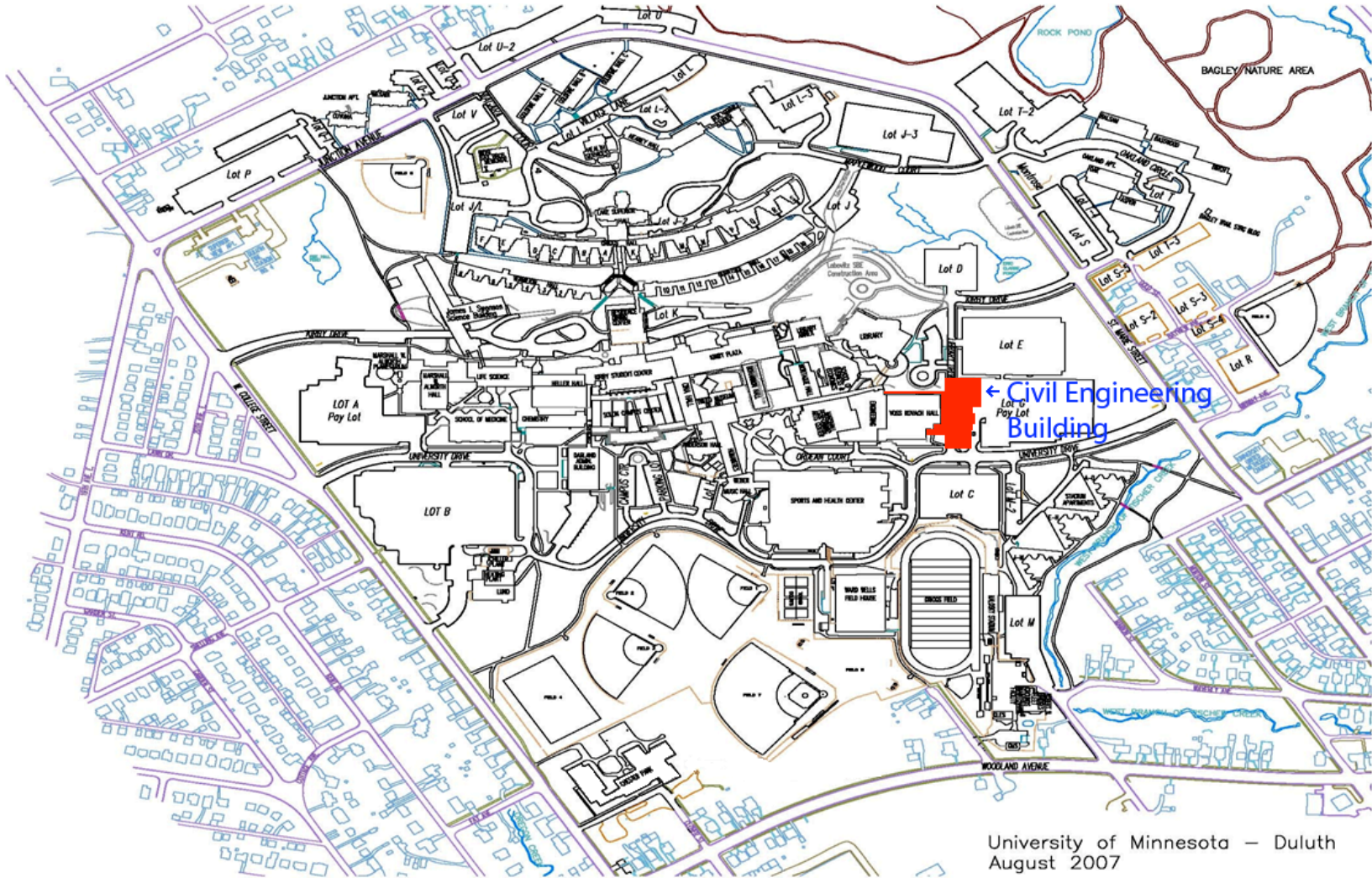
Building Exterior



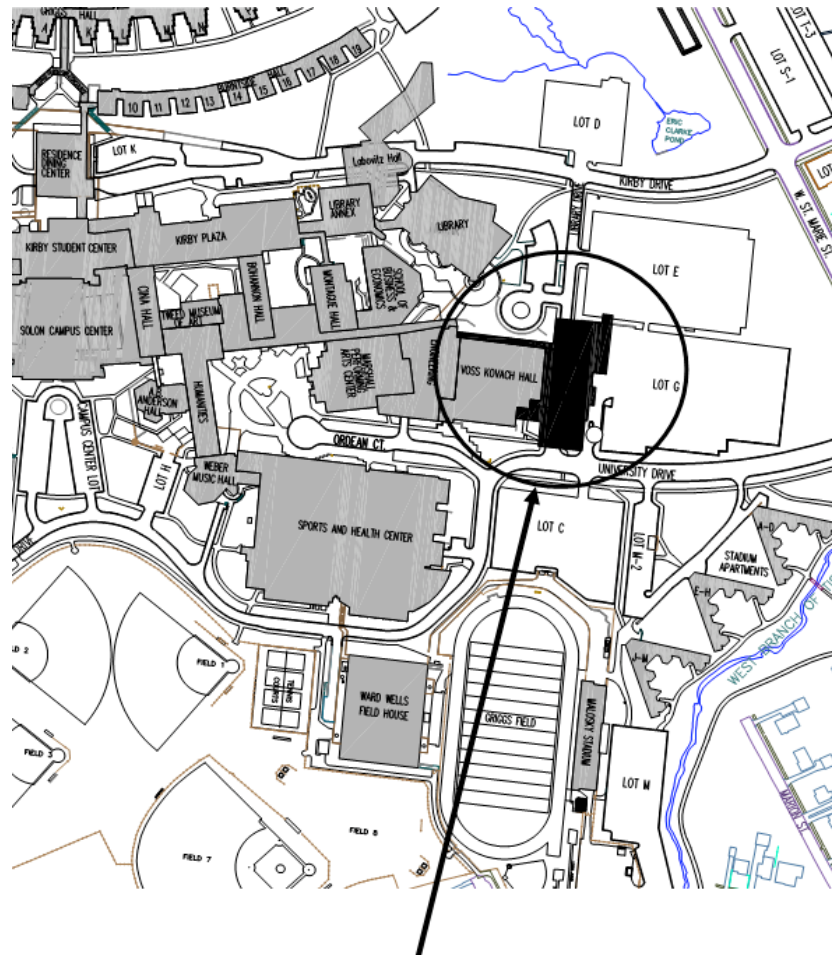
Building Exterior



Location Plan



Location Plan



CIVIL ENGINEERING BUILDING
UNIVERSITY OF MINNESOTA DULUTH

Project Rationale

- Reasons for adding Duluth Civil Engineering program
 - Regional demand for civil engineers
 - Lack of civil engineering program in northern Minnesota results in a shortage of civil engineers to satisfy the regional demand.
 - UMD's proven engineering program to develop successful engineers to local, regional, national & international organizations

- Provide Undergraduate and Graduate Civil Engineers qualified for employment in a wide variety of organizations: public & private, design, material testing & manufacturing, construction, transportation, natural resources development, and energy

Project Description

- Two-story 33,300 gross square foot addition to Voss-Kovach Hall:
 - Wraps around northwest & northeast sides of existing Voss-Kovach Hall
 - Design to achieve LEED Silver certification
 - Creates to new entrances into campus
 - Provides teaching, laboratory, administrative and building support space.

- The exterior building materials include:
 - High performance curtainwall system and windows
 - Cor-ten steel cladding system
 - Cast-in-place and precast concrete

Project Description - continued

- Includes stormwater and sustainable building strategies
 - Green roof and reflective roof
 - On-site stormwater retention and infiltration
- Cost Estimate

■ Construction	\$12,500,000
■ Non-construction	<u>2,500,000</u>
■ Total Project Cost	\$15,000,000
- Capital Funding:

■ 2008 State Capital Request	\$10,000,000
■ James I. Swenson Family	3,000,000
■ Campus Funds	<u>2,000,000</u>
Total Approved Project Budget	\$15,000,000



Project Description - continued

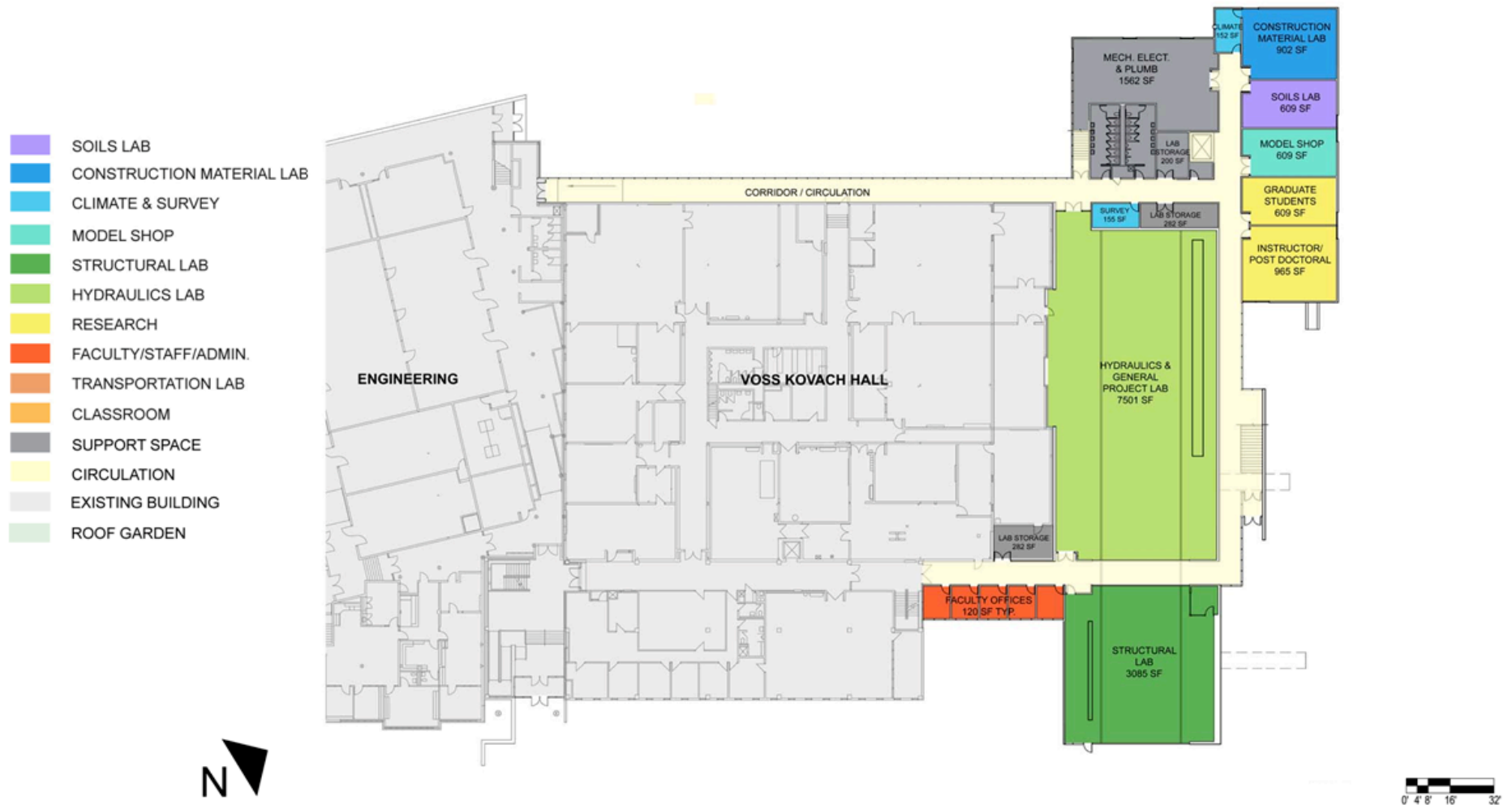
- Anticipated Completion:
 - January 2010

- Estimated Annual Operating Costs:
 - \$437,000

- Architect:
 - Architect of Record: Stanius Johnson Architects, Duluth, MN
 - Design Architect: Ross Barney Architects, Chicago, IL

- Project Delivery Method:
 - Design – Bid – Build

First Floor Plan



Second Floor Plan

- SOILS LAB
- CONSTRUCTION MATERIAL LAB
- CLIMATE & SURVEY
- MODEL SHOP
- STRUCTURAL LAB
- HYDRAULICS LAB
- RESEARCH
- FACULTY/STAFF/ADMIN.
- TRANSPORTATION LAB
- CLASSROOM
- SUPPORT SPACE
- CIRCULATION
- EXISTING BUILDING
- ROOF GARDEN





UNIVERSITY OF MINNESOTA

Civil Engineering Building

Duluth Campus