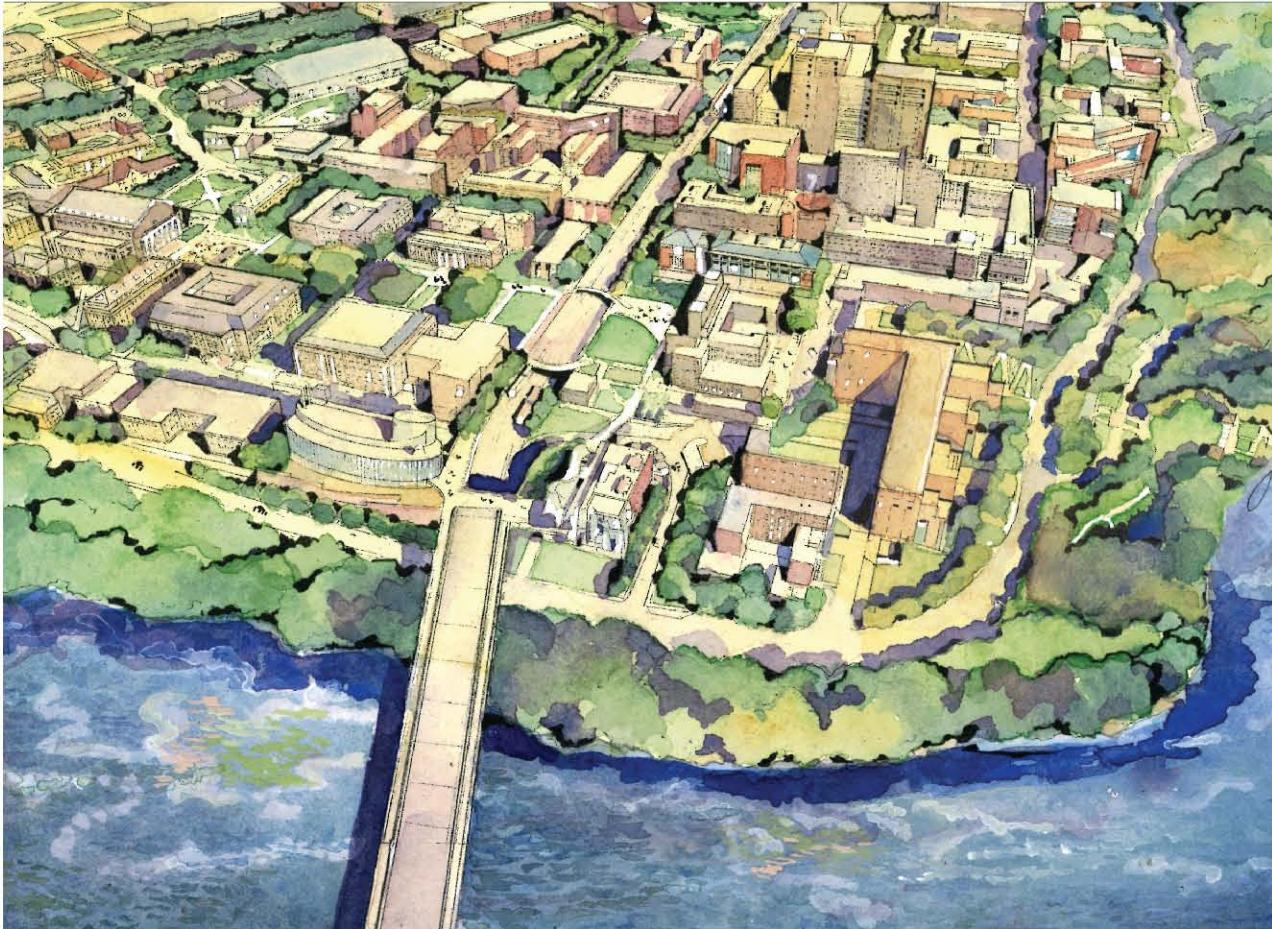


# University of Minnesota Twin Cities Campus

discover connect sustain



Prepared for:  
University of Minnesota  
Board of Regents  
March 2009



UNIVERSITY OF MINNESOTA  
**Driven to Discover<sup>SM</sup>**

# Today's Agenda

- Planning Process
- Vision, Principles, and Plan Recommendations
- Community Comments
- Refinements since February



# Planning Process



UNIVERSITY OF MINNESOTA

Driven to Discover<sup>SM</sup>

# Charge to the Steering Committee: Update the 1996 Master Plan

- Align and integrate the Master Plan with **University core processes** such as strategic positioning, academic planning and funding;
- Take full advantage of the **major initiatives** scheduled for the next decade;
- Focus on “**growing a campus**” rather than building buildings;
- Instill the **principles of sustainability**, so that the new plan leaves the campus better for future students, staff, and faculty;
- Optimize the distinction of being the largest research University that bridges the **Mississippi River**;
- Increase **ownership** of the Master Plan by the University community, and ensure **broad and meaningful consultation** with key constituencies.



# Summary of Process/ Involvement

- Master Plan Steering Committee
- Specialized Work Teams (approximately 75 faculty, staff, students)
- Agencies and community based organizations
- Members of the University community
- Members of the general public



# Principles and New Directions



*East Gateway District*



*Mississippi River Corridor*



UNIVERSITY OF MINNESOTA

**Driven to Discover<sup>SM</sup>**

# Vision Statement

The Twin Cities Campus is a historic place that supports a ‘sustainable community of discovery’ – a community directed toward excellence in the teaching, research and outreach activities that comprise the University of Minnesota and inspires pride in the people who study, work, reside in and visit the Minneapolis and St Paul campus.



UNIVERSITY OF MINNESOTA

Driven to Discover<sup>SM</sup>

# Updated Guiding Principles

## Building Community

1. Cultivate a genuine sense of community
2. Strengthen connections to adjacent communities

## Creating a Model Campus

3. Create a cohesive, memorable system of public spaces
4. Provide a compatible and distinctive built environment
5. Steward historic buildings and landscapes
6. Foster a safe, secure and accessible campus environment

## Integrating Local and Regional Systems

7. Preserve and enhance natural systems and features
8. Integrate transportation systems emphasizing pedestrians, bicycles and transit
9. Optimize the use of campus land and facilities and apply best practices

## Using Resources Wisely

10. Make the campus environmentally and operationally sustainable
11. Utilize the campus as a living laboratory to advance the university's mission





# Summary of Key Recommendations

- Steward the Mississippi River and related ecosystems
- Identify critical open spaces to be held open in perpetuity
- Implement sustainable operations, design, construction and maintenance
- Create new open spaces and designate iconic open spaces
- Expand utility infrastructure to meet campus needs
- Make pedestrian and bike travel a priority
- Invest in signature streets to support campus-like environments
- Designate Joint Planning Areas for collaborative planning
- Define campus growth areas at a) East Gateway and b) north of Fulton Street corridor



# Summary of Comments



*East Bank*



*St Paul*



UNIVERSITY OF MINNESOTA

**Driven to Discover<sup>SM</sup>**

# Community Comments

## **Guiding Principles**

- Campus as a living laboratory
- Mississippi River

## **Community Connections**

- University's impact on adjacent communities
- Joint Planning Areas
- Social component of campus life
- Future plans for the Golf Course and the fields north of Larpenteur
- Campus boundary and expansion

## **Natural Features and Systems**

- Sustainability
- Additional greening of campus, including the West Bank

## **Public Spaces and Buildings**

- Historic Resources



# Community Comments

## **Movement and Circulation**

- Pedestrians and cyclists
- Incentives to use transit
- Needs of automobiles
- Wayfinding
- Faculty and staff living nearby
- Student parking in surrounding neighborhoods

## **Implementation**

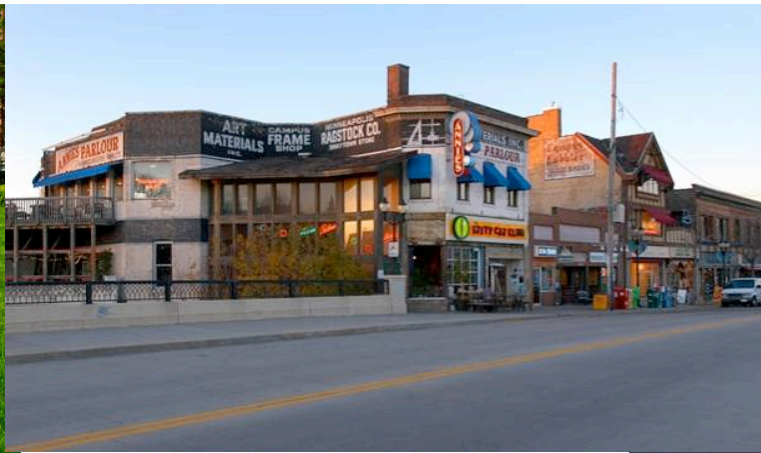
- Community involvement – particularly in U development bordering neighborhoods

## **Master Planning Process**

- Comment opportunities
- Community involvement



# Refinements to the February Draft



UNIVERSITY OF MINNESOTA  
**Driven to Discover**<sup>SM</sup>

# Refinements since February

## Community Connections

- Added language supporting sense of community and place

## Natural Resources

- Added guideline supporting use of native species as a tool to preserve and restore vegetation

## Movement and Circulation

- Added language regarding wayfinding across all modes of travel
- Added language linking healthy living to pedestrian priority guidelines
- Added map to represent future transportation changes on campus
- Added guideline under signature streets to emphasize partnerships to achieve goals
- Added language supporting faculty and staff living nearby to reduce commuting and demand for campus parking

## Public Spaces and Buildings

- Added guideline under Axes and Paths to reinforce design of building entrances with common paths to people with and without disabilities.
- Revised Development Framework Map: Scott, Akerman, Tate, Mechanical Engineering designated for renovation/adaptive reuse



# Refinements since February

## District Plans

- Added District Plan Maps

## Implementation

- Added guideline under Administering the Plan to clarify that projects located at the physical edge of the campus will be developed in consultation with community

## Appendix

- Provided a more detailed account of public involvement activities

## Acknowledgements

- Included names of Work Team members
- Added recognition of adjacent communities and municipalities who participated in the MP process.



# Recommended Action



UNIVERSITY OF MINNESOTA

**Driven to Discover<sup>SM</sup>**





UNIVERSITY OF MINNESOTA

**Driven to Discover<sup>SM</sup>**

discover connect sustain



UNIVERSITY OF MINNESOTA

Driven to Discover<sup>SM</sup>