

University of Minnesota  
ACADEMIC ADMINISTRATION  
ORGANIZATION CHARTS



PREPARED BY  
PRESIDENT'S OFFICE  
MARCH 1, 1940

## INDEX

<i>PAGE</i>	<i>TITLE</i>
1	GENERAL ORGANIZATION COLLEGES AND SCHOOLS UNIVERSITY SENATE COMMITTEES
2	COLLEGE OF SCIENCE, LITERATURE, AND THE ARTS
3	INSTITUTE OF TECHNOLOGY
4	DEPARTMENT OF AGRICULTURE
5	MEDICAL SCHOOL
6	COLLEGE OF EDUCATION
7	GRADUATE SCHOOL
8	GENERAL EXTENSION DIVISION
9	SEPARATE OFFICES AND UNATTACHED DEPARTMENTS
10	SPECIAL COMMITTEES

MAD  
Ac 12

**BOARD OF REGENTS**

**PRESIDENT  
OF THE UNIVERSITY**

**COMPTROLLER AND  
SECRETARY BOARD OF REGENTS**

*SEE SEPARATE CHARTS FOR  
BUSINESS ADMINISTRATION*

**UNIVERSITY DEAN AND  
ASSISTANT TO THE PRESIDENT**

**LECTURES  
AND  
CONVOCATIONS**

**UNIVERSITY  
ART  
GALLERY**

**NYA  
PROJECTS**

**WPA  
PROJECTS**

**SEPARATE OFFICES AND  
UNATTACHED DEPARTMENTS**

*Offices*

1. Registrar
2. Dean of Student Affairs
3. Dean of Women
4. Alumni Office
5. News Service
6. Housing Bureau
7. Student Organizations Office

*Departments*

8. University Library
9. Student Health Service
10. Center for Continuation Study
11. Institute of Child Welfare
12. Physical Education for Men

*For numbers 13-28 inc., see list on page 9*

**COLLEGES AND SCHOOLS**

1. College of Science, Literature, and the Arts
2. Institute of Technology
3. Department of Agriculture
4. Medical School
5. School of Dentistry
6. Law School
7. College of Pharmacy
8. College of Education
9. Graduate School
10. General Extension Division
11. School of Business Administration
12. Division of Library Instruction
13. University College
14. General College
15. Summer Session

**UNIVERSITY SENATE  
COMMITTEES**

1. Intercollegiate Athletics
2. Finance and Audit
3. Student Publications
4. Student Affairs
5. Debate and Oratory
6. University Extension
7. University Functions
8. University Printing
9. Education
10. Business and Rules of the Senate
11. Relation of the University to Other Institutions of Learning

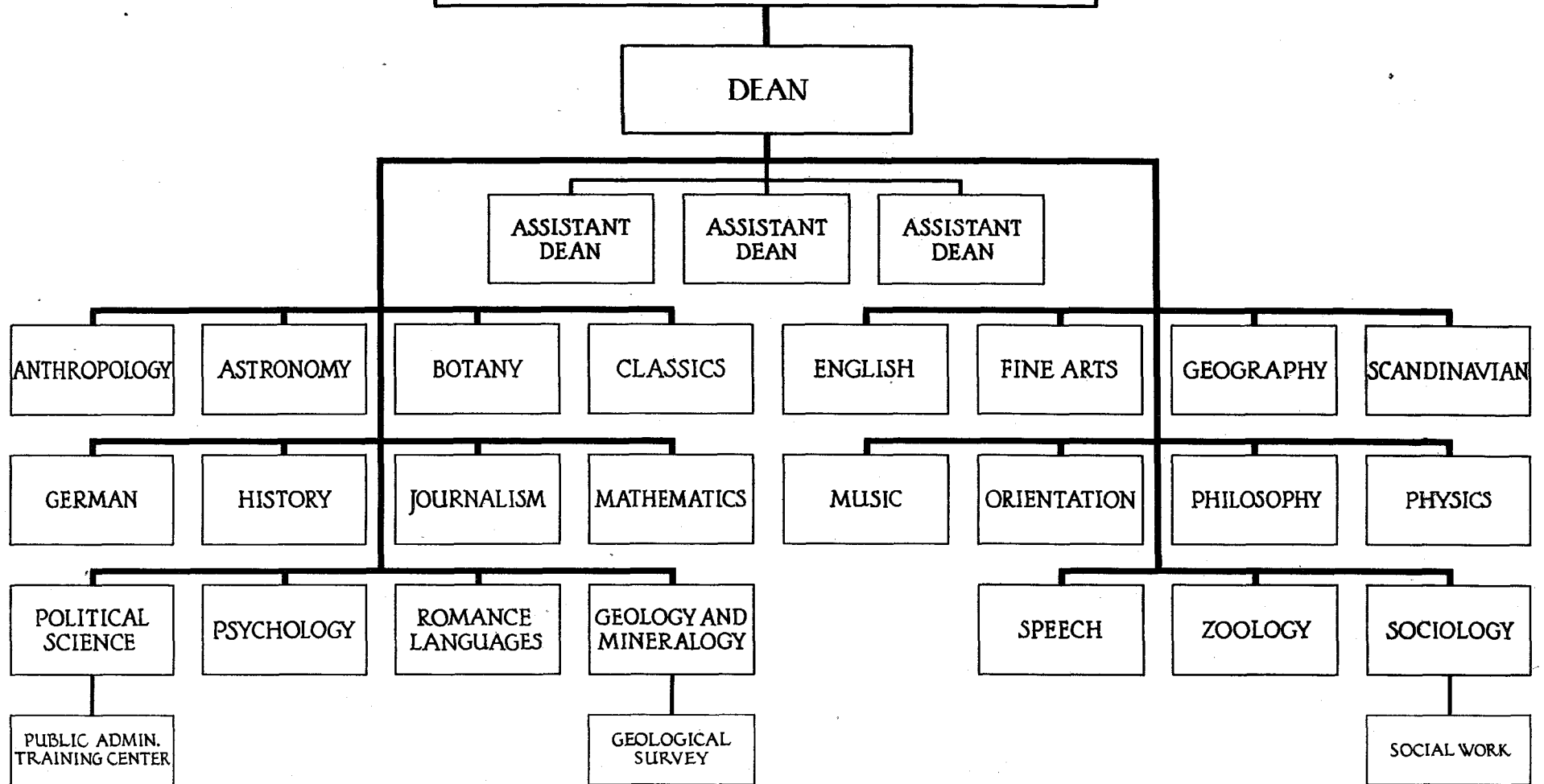
**SPECIAL COMMITTEES**

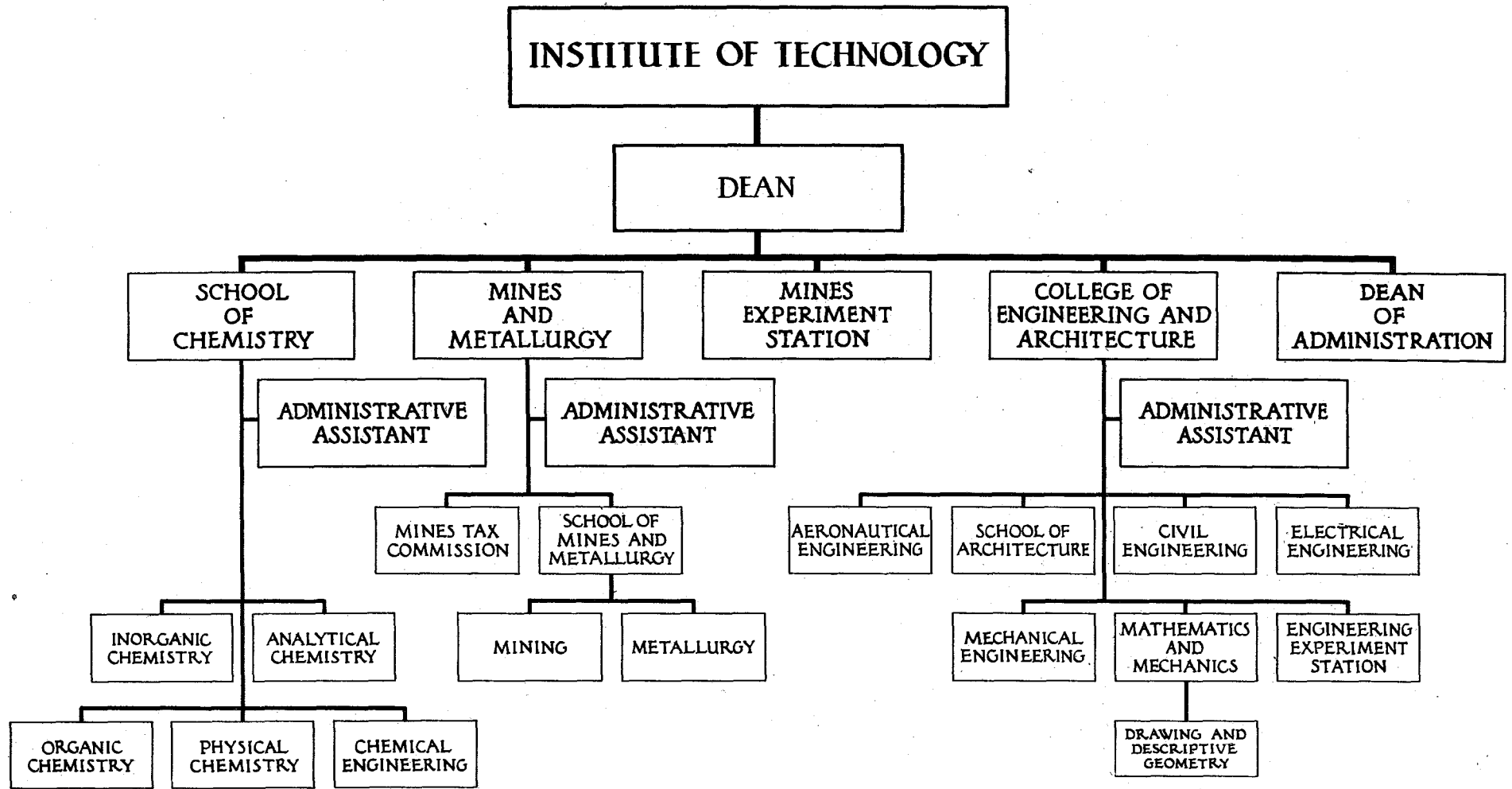
1. Committee on fees
2. University personnel council
3. Advisory committee - coordination student personnel services
4. Committee on academic tenure
5. Committee on census tracts
6. Committee re proposal to have sound moving pictures and photographic portraits of faculty members of advanced years
7. Committee to select markers for university buildings
8. University radio committee
9. Consultative committee on broadcasting

*For numbers 10-64 inc., see list on page 10*

5-12-41 President's Office 4/1

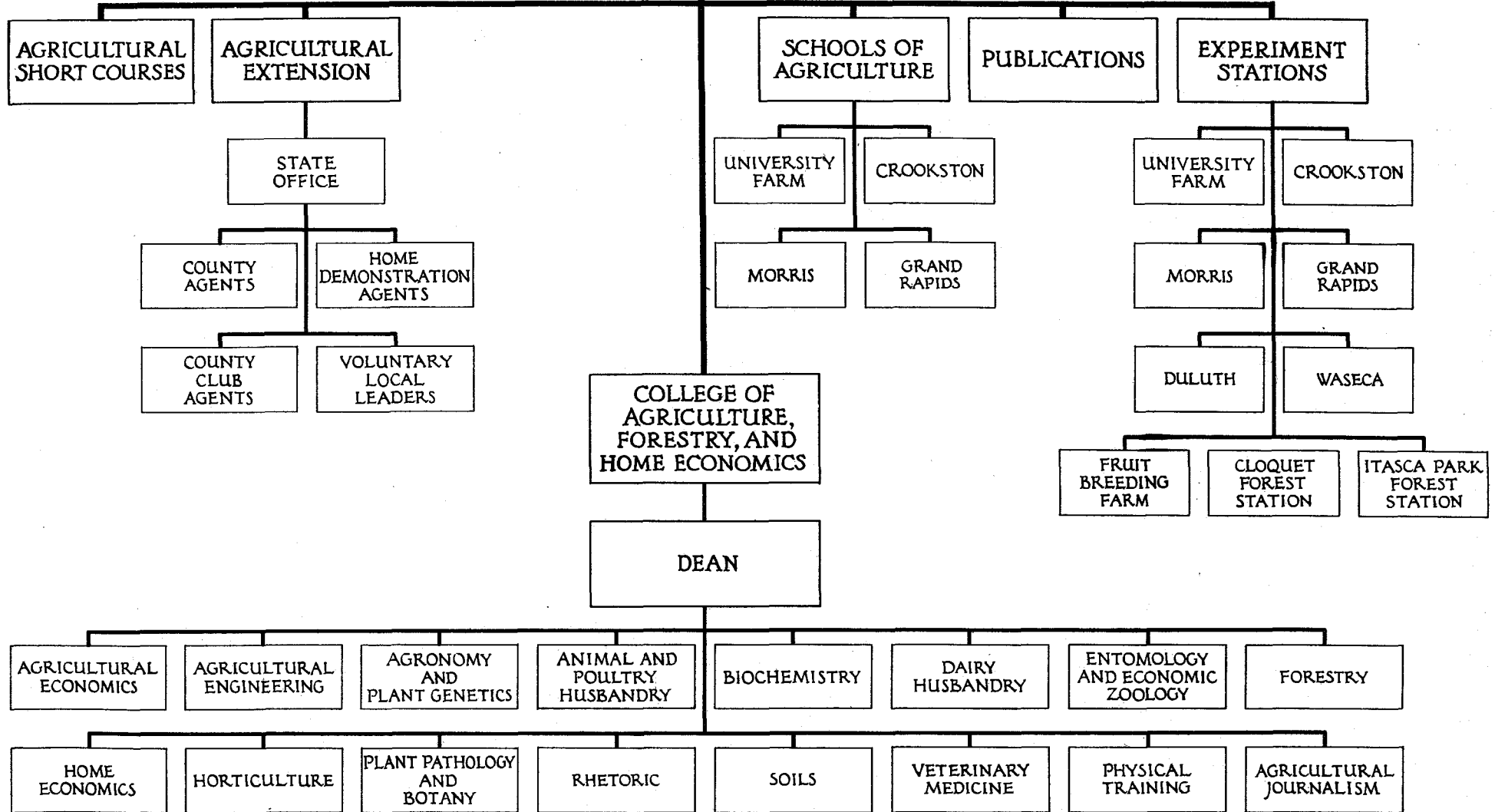
# COLLEGE OF SCIENCE, LITERATURE, AND THE ARTS

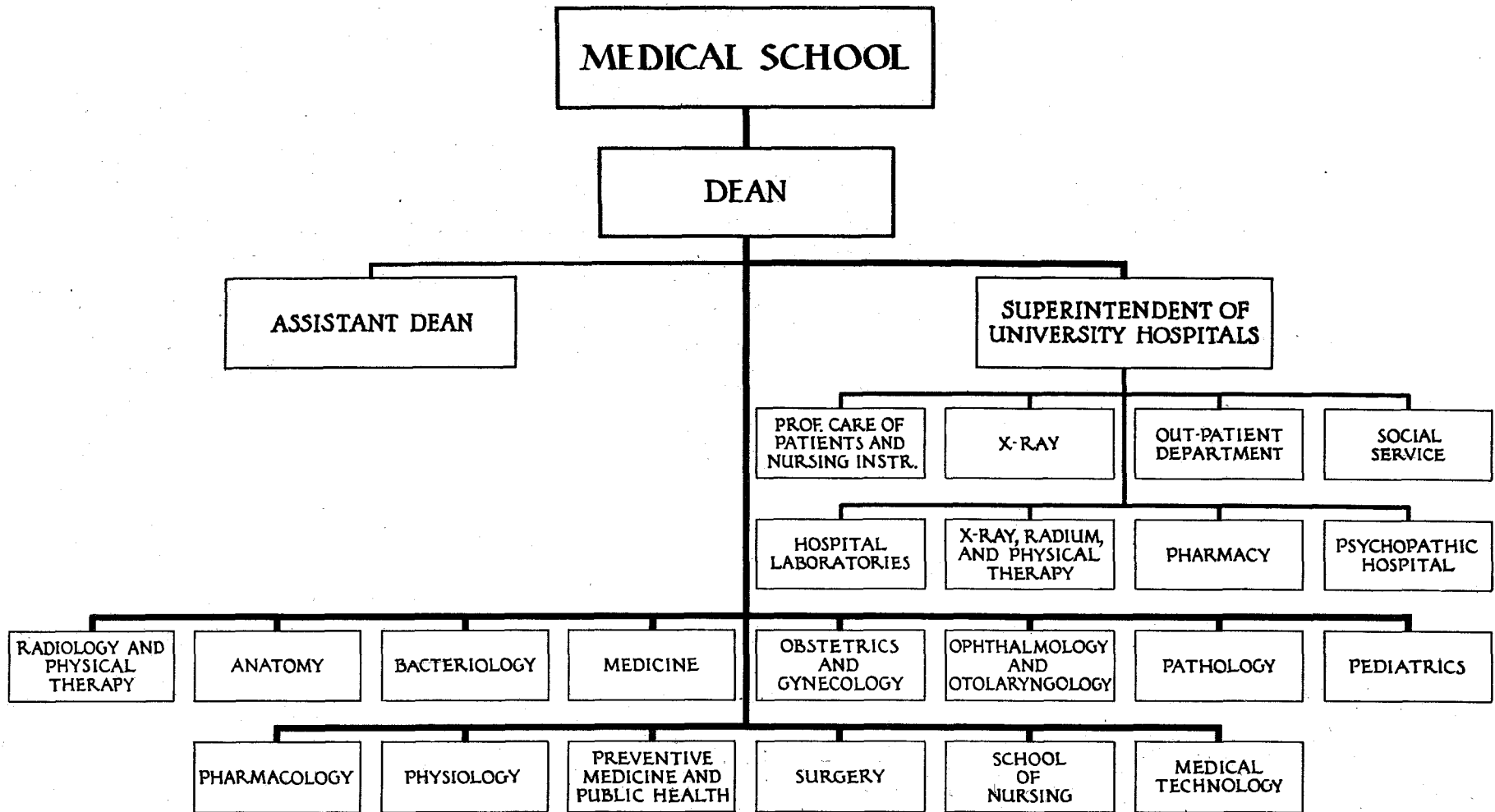


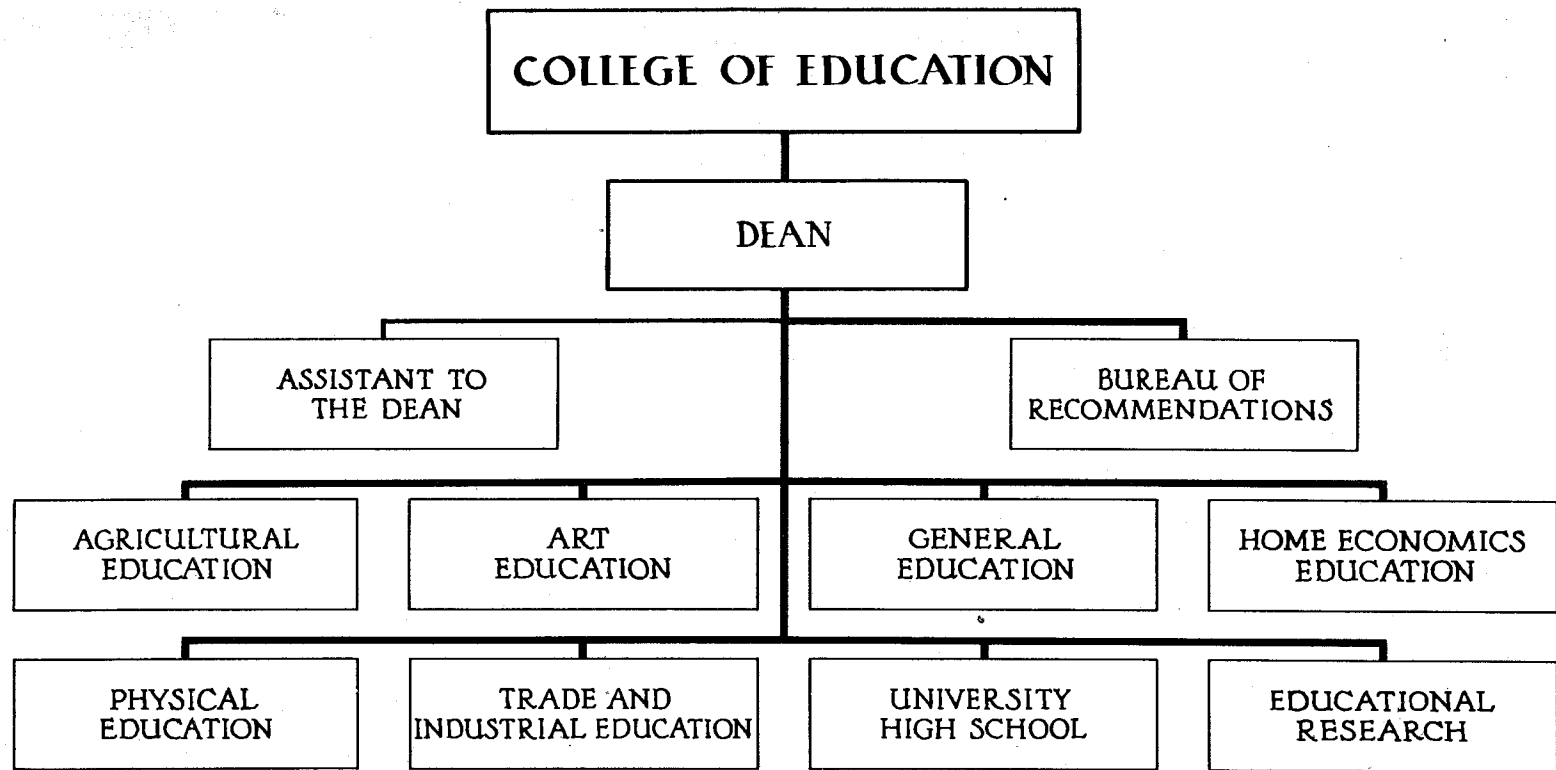


# DEPARTMENT OF AGRICULTURE

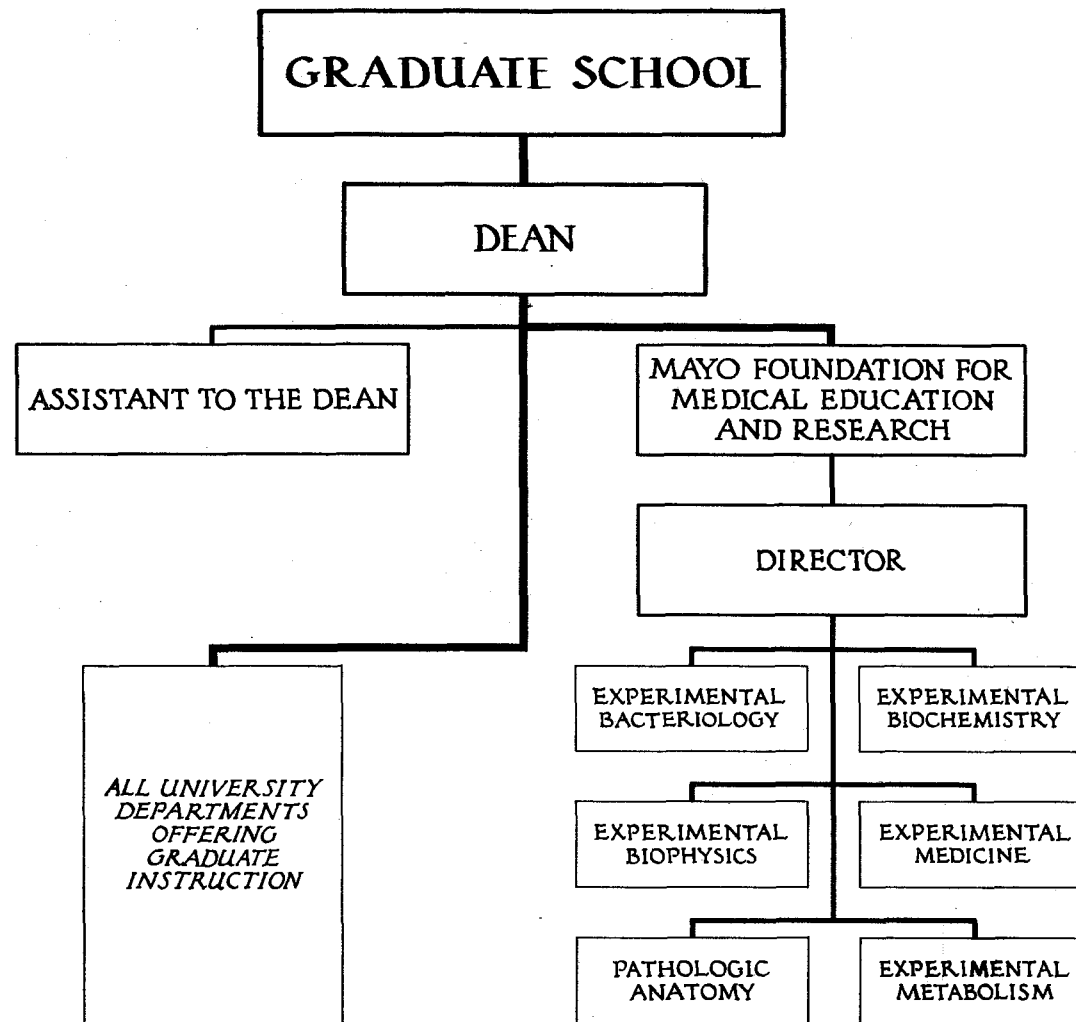
DEAN AND DIRECTOR

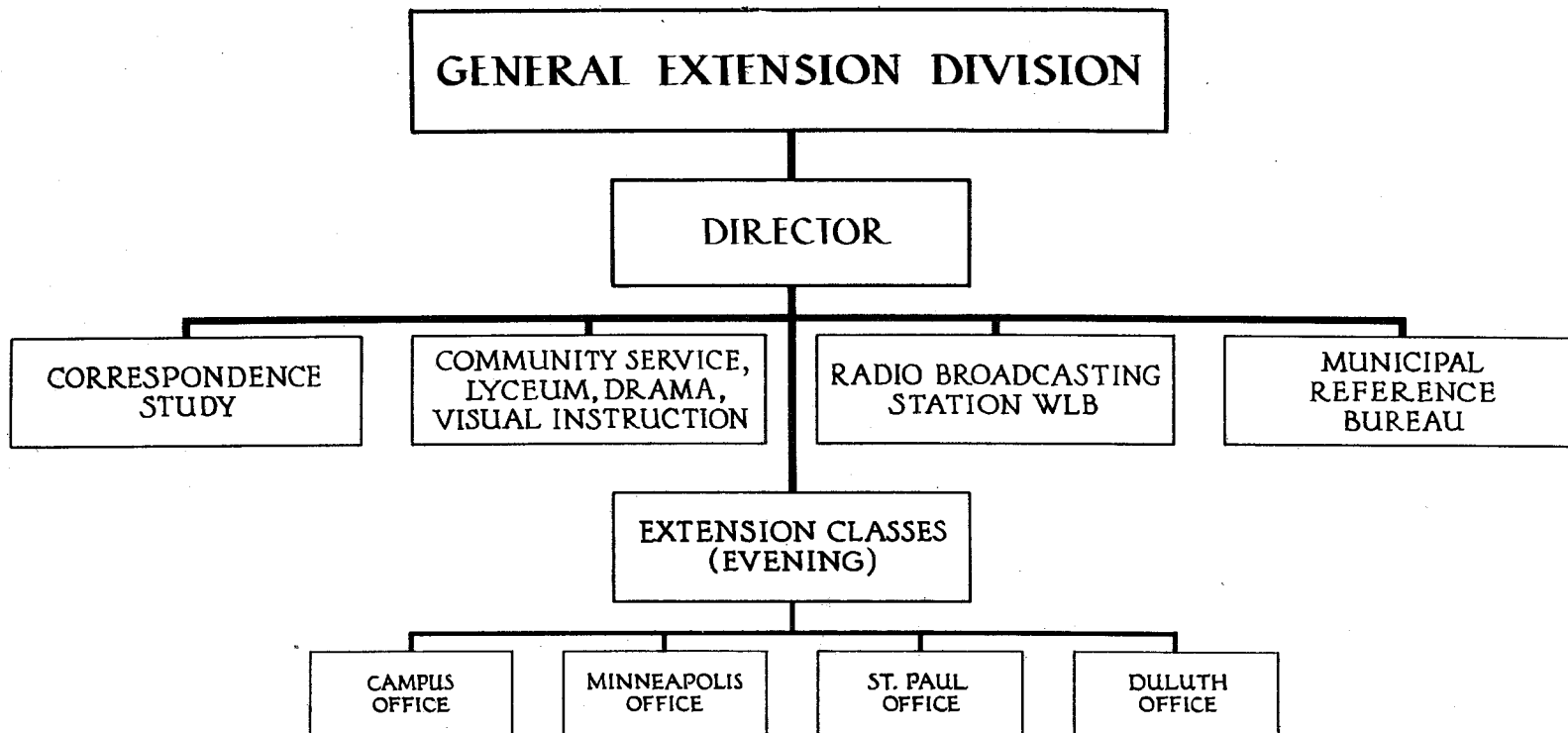












# SEPARATE OFFICES AND UNATTACHED DEPARTMENTS \*

## OFFICES

1. Registrar
2. Dean of Student Affairs
3. Dean of Women
4. Alumni Office
5. News Service
6. Housing Bureau
7. Student Organizations Office

## DEPARTMENTS

8. University Library
9. Student Health Service
10. Center for Continuation Study
11. Institute of Child Welfare
12. Physical Education for Men
13. Physical Education for Women
14. Minnesota Union
15. University Testing Bureau
16. Student Personnel Coordination Service
17. Museum of Natural History
18. Educational Research (Committee on)
19. Military Science and Tactics
20. Naval Science and Tactics
21. Northwest Research Institute
22. University Press

## OTHER

23. Board of Admissions
24. Freshman Week
25. Committee on International Relations
26. Regents Examining Committee
27. University Chorus
28. University Artists Course

\* *Each of these units reports directly to the President*

## SPECIAL COMMITTEES \*

1. Committee on fees
2. University personnel council
3. Advisory committee—coordination student personnel services
4. Committee on academic tenure
5. Committee on census tracts
6. Committee re proposal to have sound moving pictures and photographic portraits of faculty members of advanced years
7. Committee to select markers for university buildings
8. University radio committee
9. Consultative committee on broadcasting
10. Committee on naming university buildings and renaming old buildings
11. Advisory committee—group hospitalization plan
12. Committee to survey personnel work done at the University of Minnesota
13. Board of admissions
14. Summer session advisory committee
15. Committee to inspect rooming houses for men
16. Rhodes Scholarship selection committee (Minnesota)
17. Committee on the arts
18. Committee on university training for public service
19. Anniversary of founding the University of Minnesota
20. Committee of Seven
21. Committee to carry out suggestions of Dads' Association regarding reporting on students' work
22. Committee on student identification cards
23. Committee on rental libraries
24. Johnston Scholarship Committee
25. Committee to study opportunities for continuing education for non-academic staff members
26. Committee on fee exemption for instructors, fellows, scholars, assistants, registered in the Graduate School
27. Advisory committee of the Northwest Research Institute
28. Committee on program for training in recreation and in a number of new specified fields
29. Library committee
30. Committee on union of sciences of medicine, dentistry, and pharmacy
31. Committee on student work relief
32. Band committee
33. Center for Continuation Study advisory committee
34. Board of publications
35. Committee to work with Minneapolis Junior Association of Commerce for greater welfare of the University
36. Committee on classification of the non-academic personnel
37. Committee to consider the possibility of simplifying the official publications which the University issues to assist students in registering
38. Traffic committee
39. Committee on parking of autos on campus
40. Committee on honorary degrees
41. Committee to purchase scientific equipment
42. Committee to handle student cases of discipline involving moral delinquency
43. All-university disciplinary committee
44. Committee to conduct examinations of applicants for the Minnesota State Bureau of Criminal Apprehension
45. Committee on visual education
46. Committee on social science research
47. Committee on public information
48. Committee on conference on contemporary affairs
49. Committee on salary contributions
50. Committee on Minnesota Foundation
51. Advisory committee - President's letter
52. Faculty-student committee on housing
53. Committee to handle training program of Civil Aeronautics Authority
54. Committee on history and services of the University
55. University of Minnesota Press committee
56. Committee on insurance and pensions
57. Committee on tutoring by staff members
58. Board of review to determine right of student to resident tuition fees - guardians for students
59. Committee on guest collaborators and university status
60. Committee to define policy regarding memorials, portraits, testimonials, and the like presented to the University
61. Committee on dental research
62. Committee to study use of old home building at University Farm vacated on account of new Health Service Building
63. Committee to study use of Shevlin Hall when vacated and old Union Building when vacated
64. University patent committee

\* *These active committees (as of March 1, 1940) are appointed by the President and are directly responsible to him*