

11/30/77

**1977-78
Women's
Intercollegiate
Athletics**

UM UNIVERSITY OF MINNESOTA



MSGP
W842
A3w

UNIVERSITY OF MINNESOTA
DEPARTMENT OF WOMEN'S INTERCOLLEGIATE ATHLETICS

Directory

Administrative & Support Staff

Director	Dr. Vivian Barfield	373-2253	341-3630
Sports Information Director	Carol Van Dyke	376-5259	379-1775
Sports Information Asst. Director	Pam Smith	376-5259	854-5754
Athletic Therapist	Dr. Dot Cohen	376-5039	644-6255
Patty Berg Development Fund	Betty Johnson	373-2481	546-1730

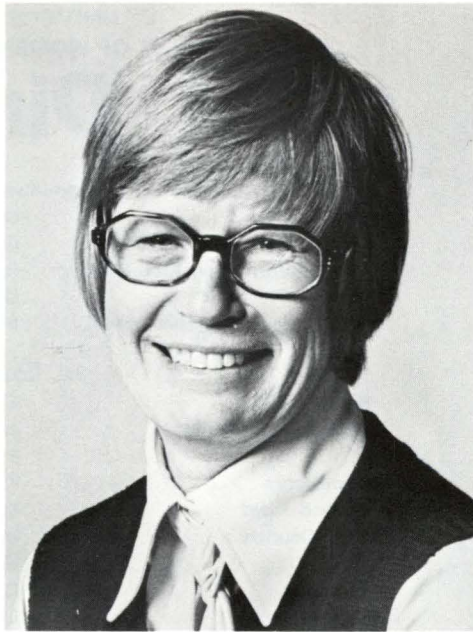
COACHING STAFF

Basketball	Ellen Mosher	376-5378	455-3553
Swimming & Diving	Jean Freeman	373-5145	338-1786
	Frank Oman		
Gymnastics	Katalin & Gabor Deli	373-5145	544-7640
Track & Field	Mike Lawless	376-5288	699-3751
Cross Country	Mike Lawless	376-5288	699-3751
Tennis	Ellie Peden	376-5435	784-0785
Golf	Carol Isaacs	373-5145	484-7689
Softball	Linda Wells	376-5287	331-4278
Field Hockey	Ruth Christianson	373-5145	724-6554
Volleyball	Linda Wells	376-5287	331-4278

Contents

Message To You	Page 4
Dr. Vivian Barfield - Director	5
Meet The Coaches & Staff	6
Patty Berg Development Fund	13
Volleyball	14
Field Hockey	16
Cross Country	18
Basketball	20
Gymnastics	22
Sports Events Schedule	Centerfold
Swimming & Diving	24
Track & Field	26
Tennis	28
Golf	30
Softball	32
Meet Goldie	34
AIAW - Our Governing Organization	35
This Is Gold Country	36
Vital Information	38
To the News Media	41
Tickets	42

A MESSAGE TO YOU



Things are changing for women in this country and the Department of Women's Intercollegiate Athletics here at the University of Minnesota is on the forefront of these changes.

Since 1972 when we became a full-fledged department we have experienced a number of significant changes: A director was hired, a competent coaching staff was shifted from part-time to full-time status, we arranged a challenging competitive schedule for the ten varsity sports, and a support services group was added to complement the staff.

And now — where traditionally little or nothing was offered — the women's athletic program provides young women with a top-notch competitive and learning experience.

Athletics teach not so much facts as attitudes of achievement and success. Living in a competitive society a young woman should be able to perceive in her self-image how competition and aggressiveness contribute to her womanliness. Women who have had the experience of teamwork, the experience of performing, learning how to win and lose, develop a strong sense of identity and value personal achievement.

The mission of the Department is to enrich the quality of life for people in Minnesota, particularly young women student-athletes, through experience in sport. Implicit in this statement is the understanding that the strength of the program resides with our ability to encourage academic excellence first while providing highly skilled women with a way to fully develop their athletic talents. We are firmly committed to this goal.

DR. VIVIAN BARFIELD **DIRECTOR**

Dr. Vivian Barfield, who came on board as Director of the Department of Women's Intercollegiate Athletics last September, has spent an incredibly busy first year.

She's given countless speeches before civic clubs, talks at award banquets, such as the Athena Awards, PTA's, inservice sessions for educators and presentations at national conferences on women athletes. This summer she taught at Adelphi University in New York on "Women in Sport." And she's currently working on a study of childhood games of successful women with Dr. Judy Toyama of the University of Massachusetts Department of Sports Studies.

She's been interviewed by the media and claims, "Sometimes I came out on top, sometimes not." But she has definitely increased the visibility of the department one hundred percent.

A major accomplishment this past season was the inauguration of the Patty Berg Development Fund and the creation of its community-based, Executive Steering Committee. Together with the staff they all raised over \$30,000 for athletic grants last year, through not only direct contributions, but through events such as the highly successful Sportsmania fashion show put on for us by Gamma Phi Beta Sorority, the Northwest Builders Home and Patio Show, and the Berg/Bolstad Golf Tournament.

Along with getting the Berg fund launched, Dr. Barfield has spent nine months working with her staff and organizing the program. "If something happens to me tomorrow," she comments, "I want this department to run so smoothly, they won't even know I'm gone." Part humorous, but the thought behind it is serious.

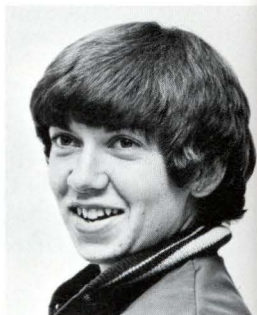
A native of Houston, Texas, Dr. Barfield earned her undergraduate degree in health and physical education/history from the University of Houston in 1966, taking her master's from the same institution three years later — all the time struggling and juggling to make ends meet while supporting her two children. She took her Ph.D. from the University of New Mexico at Albuquerque in 1972 in Curriculum and Instruction teacher education.

And previous to coming to Minnesota as director for the women's program, she was director of several summer session sports programs for the Colorado Women's College in Denver.

A tireless worker and administrator, who lives only minutes from her office in Bierman Field Athletic Building, Dr. Barfield is active in AIAW, a number of women's political organizations, along with college athletic directors and educators' organizations.

And amidst all the demands she finds time to occasionally go mountain climbing with son Lowry, 20, a student at Texas Tech, or see the sights at Las Vegas with daughter Nancy, a 22-year-old University of Houston student.

MEET THE COACHES & STAFF



Ruth Christianson - Field Hockey

Coach Ruth Christianson has the distinction of being the only Department of Women's Intercollegiate Athletics coach whose youngest player is five, who oldest is 22. How? She does it part-time. She teaches physical education for grades K-6 for the Minneapolis public school system and in the field hockey season, she coaches the Gopher team.

A native of Minneapolis, Ruth took a B.S. in physical education from the University of Minnesota in 1970, playing on the field hockey team as a student. This year she enters her fourth coaching season, with a strong team that will compete for the first time in the AIAW structure.

Along with her teaching and coaching functions, Ruth is the current president - for the third straight year - of the Minnesota Field Hockey Club, one of the amateur clubs comprising the U.S. Field Hockey Association. She is also a state-rated and practicing official in basketball and volleyball and is presently working on her p.e. master's.



Carol Isaacs - Golf

Golf coach Carol Isaacs begins her fourth season this year, fresh from a good summer. In June she attended the AIAW Golf Nationals in Honolulu, Hawaii, with Gopher star golfers Julie Gumlia and Sue Jaqua and in mid-July she watched Julie and team newcomer Kathy Williams compete in the Women's U.S. Open in her own back yard - well, almost - at the Hazeltine Golf Club in Chaska.

Isaacs, a 1972 graduate of the University of Minnesota's physical education program, has been golfing for over twenty years and taught at the St. Paul YWCA before joining the UM coaching staff in fall 1974. Carol has authored several articles on golf instruction for NAGWS sport guides (National Assoc. for Girls & Women in Sport) and has been a master teacher at their local golf workshops.

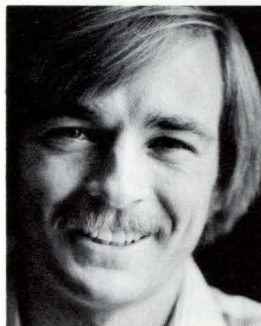


Linda Wells - Volleyball and Softball

If there is a coach for all seasons at Minnesota, it's got to be Linda Wells. This year she'll serve as head coach for volleyball and softball, along with official duties as tournament coordinator for MAIAW and Region 6. Linda has also been active in AIAW at the national level.

A native of Pacific, Missouri, Linda graduated from Southeast Missouri State University at Cape Girardeau. She came to Minnesota as a graduate assistant in physical education in 1972 and has been here ever since coaching softball, volleyball and basketball for the Department of Women's Intercollegiate Athletics.

Linda also has the distinction of playing as a professional in one of the sports — softball — she coaches. She played softball as a student for Southeast Missouri and plays professionally in the summers for the International Women's Professional Softball Association teams: last year for the Chicago Ravens, this summer for the St. Louis Hummers. In volleyball Linda has played for the USVBA (U.S. Volleyball Association) and in 1974 was player/coach for the Suburban Volleyball team (a Minneapolis amateur team) which placed 17th in the nation in the USVBA finals in Reno.



Mike Lawless - Cross Country/Track & Field

Former University of Minnesota letterman Mike Lawless begins his fourth season as the cross country/track & field coach for the Gopher women. Mike brings a unique combination of expertise to the program from his experiences with both men's and women's athletics.

Primarily a distance runner in his student days, Lawless lettered four years in cross country and three in track under men's coach Roy Griak. A native of Racine, Wisconsin, Mike took a B.A. and B.S. in biology and secondary education from the UM in 1973 and as his own student career ended he came on board as track coach for the then-fledgling Women's Intercollegiate Department.

As a coach, Lawless has seen no lack of talented female varsity athletes. Gopher thinclad Jan Oas, who assisted Mike in coaching last season, set several collegiate records and qualified and competed in the 1972 Olympic trials in the 220 yard run. Both teams have consistently ranked high in the state meets, with top individual performances from Gopher women, many of whom have gone on to the AIAW Nationals.



Frank Oman - Diving

Frank Oman, diving coach for the Gopher women, begins his second season with the Department of Women's Intercollegiate Athletics this year.

Frank's experience in the sport extends back to his days as a letterman on the Gopher men's diving team in 1963. Since graduation Oman has spent 12 years coaching diving at the high school level, including seven seasons at Rochester-Mayo High School in southern Minnesota before he came on board as women's diving coach last year.

During Oman's high school tenure, his teams never lost a dual meet. Producing three high school All-Americans and six state high school champions has been the highlight of Oman's career and an indication of his great ability to motivate athletes.

Oman makes his home with his wife and two daughters and a son (who dive, of course) in Rochester, Minn. and continues to commute during the Gopher season.



Ellie Peden - Tennis

"It's going to be a super year," says tennis coach Ellie Peden as she heads into her third season. No one from her current team graduated and several highly-ranked and talented newcomers are coming on board. What more can a coach hope for, she asks?

A native of Berwyn, Illinois, Peden graduated from the University of Illinois with a B.S. in physical education. Her coaching credits include: The Anoka Senior High School team, the College of St. Catherine's in St. Paul, besides being a USPTA teaching pro at a local indoor racquet club. Ellie also has taught tennis and racquet sports at Anoka-Ramsey Community College, has written tennis articles and conducted clinics and workshops for physical education teachers.

Highly ranked in the Northwestern Tennis Association, in 1974 Peden was #1 in women's singles, doubles and mixed doubles. Quips Peden: "That was the year I peaked." In 1975 she reached the semifinals of the National Indoor Junior Veterans Doubles Tournament in Chicago.

As a means of providing her intercollegiate team with more competition and to showcase them to the community, she created the Twin Cities All Stars, a tournament that pits local pros against varsity women. It has proven to be a crowd-pleaser and goes into its third season this year.

Amidst all this activity, Ellie makes time to spend with her four children and husband in Coon Rapids.



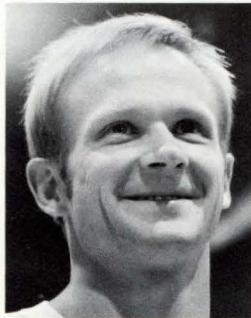
Jean Freeman - Swimming

Of the ten women's intercollegiate teams, swimming & diving has compiled the most consistently impressive record in the past four years. Much of the credit for a 38-2 dual meet record belongs to swimming coach Jean Freeman.

A graduate of the UM physical education department in 1972, Jean joined the coaching staff in 1973; previous to that Jean had coached in the Minnesota AAU system for a number of years, besides being a former competitor herself. Jean enters her fifth year as Gopher coach this upcoming season.

Her dedication and technical expertise helped produce four All-American swimmers for Minnesota in the past four years: Cindy Anderson, Joni Ellis, Cheryl Swanum and Terry Ganley. Terry, a four-time All-American, was also the first female college athlete from Minnesota to receive this honor in 1974. This year Terry comes on board as assistant swim coach.

Constantly involved with aquatic instruction, Jean has participated in the Olympic Development Swimming Clinic this year, sponsored by the U.S. Olympic Development Committee to promote high caliber swimmers and continues to teach aquatic administration, swimming and life-saving in the P.E. department.



Delis - Gymnastics

Minnesota's gymnastics team has been riding the crest of victory for the last two years and the main reason for success — after years of obscurity — is the hard-working, dynamic duo at the helm: Husband-and-wife coaches Katalin and Gabor Deli. This season they enter their fifth coaching year for the Gopher women.

They met in high school in their native Hungary and both attended the Hungarian University for Physical Education in Budapest and both competed nationally and internationally on the prestigious Hungarian National Gymnastics team for several years.

Gabor also participated in the '68 Olympics in Mexico City, and this April he (as coach) and 15-year-old Minnesota gymnast Robin Heubner represented the USA at the Champions All International Meet in London, a meet sponsored by the Gymnastics Federation of Great Britain.

Married in 1970, they emigrated to America in quest of a better life. Luckily relatives in Minneapolis and the intervention of Senator Hubert Humphrey helped them make their voyage. Along with UM duties, they are active in their own gymnastics club in the Minnetonka-Hopkins area, aptly called Mini-Hops and live in St. Louis Park with their two sons.



Ellen Mosher - Basketball

When 28-year-old Ellen Mosher was interviewing for the job as head basketball coach for Minnesota she dazzled the search committee and students alike with her unharnessed enthusiasm and love for the game, along with her impeccable credentials . . . and a great California tan.

A native of Allison, Iowa, Mosher returns to the Midwest to begin her first season with the Minnesota Gophers, commencing with practice in mid-October, the Drake Invitational — the first games — in late November and culminating with the AIAW National Championships at UCLA in late March 1978. It could take Mosher full circle to Los Angeles if Minnesota gets that far.

Ellen attended Midwestern College for three years and then graduated from Parsons College in 1971 with a physical education degree. She received her master's degree in physical education from Central Missouri State in 1972 and remained at that school for a year as a teacher/coach. She coached the women's team at Whittier College in California in 1974-75 before going to UCLA where she spent two successful seasons.

A good portion of Mosher's expertise comes out of her extensive player background. In 1975 she was named to the Iowa Girl's High School Basketball Hall of Fame. She is a seven-time AAU All-American and has been named to five USA National teams. And in 1977 she joined the ranks in Helms Hall of Fame.

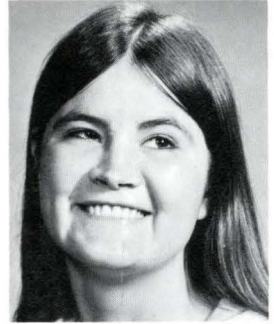


Dr. Dot Cohen - Athletic Therapist

Stationed in the Bierman Athletic Building is Dot Cohen, certified athletic trainer and corrective therapist for the program. Her job: Conditioning and reconditioning athletes for general strength and endurance. She is also on hand during games to supply emergency first-aid.

Dot came to Minnesota in 1974 as the "first" women's trainer to be hired in the state. A New Jersey native, she took her undergraduate degree in physical education at Ithaca College and a master of science in p.e. and athletic training at Indiana. This year she received her Ph.D. in health and safety education from the University of Illinois.

"Dr." Dot is also a certified member of the National Athletic Trainers Association and the American Corrective Therapy Association.



Carol Van Dyke - Sports Information Director

Carol Van Dyke, who came on board September 6, is the newest member of the Department of Women's Intercollegiate Athletics. A Wisconsin native, Carol graduated from the Kaukauna High School in Kaukauna — the home of that world famous "Kaukauna Klub" cheddar cheese. She took her B.A. in journalism, with a specialization in public relations, from the University of Wisconsin in Madison in 1975.

For the past two years Carol has been sports information director at Southern Illinois University in Carbondale. It was a brand-new position, and in this capacity, Carol established the sports information function at Southern Illinois, along with re-activating the fundraising effort for the women's program. "It was exciting to build the program from the ground up," says Carol, "and I'm really looking forward to working with the Minnesota program and athletes."

Carol is also a summer softball player and an avid outdoorsperson. Activities include hiking and camping and strictly for fun — tennis. She is looking forward to those winter Minnesota sports, but "not to those car-starting problems or those wind chill factors I hear about."



Pam Smith - Assistant Director, Sports Information

Pam Smith — camera in hand — begins her second year in sports information and as head of the women's intercollegiate sports photography department.

Originally from Billings, Montana, she grew up in Bloomington, Minnesota, and graduated from Lincoln High School. She took a B.A. in journalism (writing and photography) from the University of Minnesota's School of Journalism and Mass Communication in 1973. She spent two years in the public relations department of Fairview Community Hospitals, a Minneapolis-based multi-hospital system and another year freelancing in photography, writing and brochure production.

Smith joined the Department of Women's Intercollegiate Athletics in October 1976, and besides continuing on with the many sports information duties, hopes to bring out a photo exhibit of Gopher women athletes this spring.



Betty Johnson
**EXECUTIVE DIRECTOR OF THE
PATTY BERG DEVELOPMENT FUND**

One of the newest members of the Department of Women's Intercollegiate Athletics is Betty Johnson, the Executive Director of the Patty Berg Development Fund. A native of Nebraska, Betty has resided in Minnesota for the last eight years, currently living in Golden Valley. She attended Ursuline College in Louisville, Kentucky, majoring in business administration.

A sports fan all her life, Betty comes to the women's athletic department after 14 years with Dain, Kalman, & Quail, a Minneapolis-based regional investment banking firm, where she was assistant vice-president and department manager, and then Strommen & Associates, where she counseled in financial planning.

Active in sports promotion for the last six years — primarily through the Greater Minneapolis Chamber of Commerce — Betty chaired the Athena Awards for the Chamber for two years. These yearly awards honor outstanding Minneapolis high school girl athletes. She is also an active member of Zonta, an international service organization of executive-level women in business and the professions. One of the major undertakings of the local club has been raising funds for the Girls Club of Minneapolis. Betty, who has been a leader in their fundraising events, will chair an art auction for them this spring.

Betty's main goal this year: Spearhead a campaign to raise \$50,000 for the Patty Berg Fund and liaison with the community-based Patty Berg Executive Committee, of which she's been a member since its inception. "1977-78 promises to be a hectic — and fascinating year — for me," says Betty.

The Patty Berg Development Fund



Gladys Brooks

The Patty Berg Development Fund for Women's Intercollegiate Athletics was established in 1974 as a means of raising money to support the growing demands of women's athletics. This fund is named in honor of a former University of Minnesota student and Minnesota's premier female athlete who has become an inspiration to young women.

Money from the fund is used to finance grants (tuition and fees) for female varsity athletes. For this upcoming 1977-78 season nearly 50 grants were awarded in ten sports; money for the grants came, in part, from funds raised last year by the Patty Berg Development Fund through various events and through generous contributions by individuals and organizations.

To assist the department, the Patty Berg Advisory Council was created last year with Gladys Brooks, a Minnesota alumna, as chair. Mrs. Brooks is a former Minneapolis alderwoman and current member of the Metropolitan Council; she and the other community-at-large members of the Council have brought great expertise in guiding the program.

Also on board this year is Betty Johnson, the new Executive Director of the Patty Berg Development Fund. Ms. Johnson, who has served on the Council since its inception, will liaison between the Council and the Department of Women's Intercollegiate Athletics.

The major goal this year will be to raise \$50,000. During the past year, over \$30,000 was raised for the 77/78 season to provide for the renewal of 18 grants (of 30 grants totaling \$16,000 given in the 76/77 year), and an additional 25 grants for outstanding female athletes who wish to attend the University of Minnesota.

Your contribution and support of the Patty Berg Fund is essential. Interested alumni and friends who wish to become more involved in the program are urged to help, and if you would like more information, or if you would like to discuss the program personally, call or write:

Ms. Betty Johnson, Executive Director
The Patty Berg Development Fund
University of Minnesota, Department of Women's Intercollegiate Athletics
238 Bierman Athletic Building
516 - 15th Avenue S.E.
Minneapolis, Minnesota 55455 Phone: (612) 373-2481



Volleyball

Workouts in volleyball have already started and the team is looking forward to their first event — the Illinois Invitational on September 23 and 24 at Illinois State University in Normal.

Taking over as head coach this year is Linda Wells. Coach Wells looks to good performances from her team this season and to reaching the top this year. (Last year's record was 28-12).

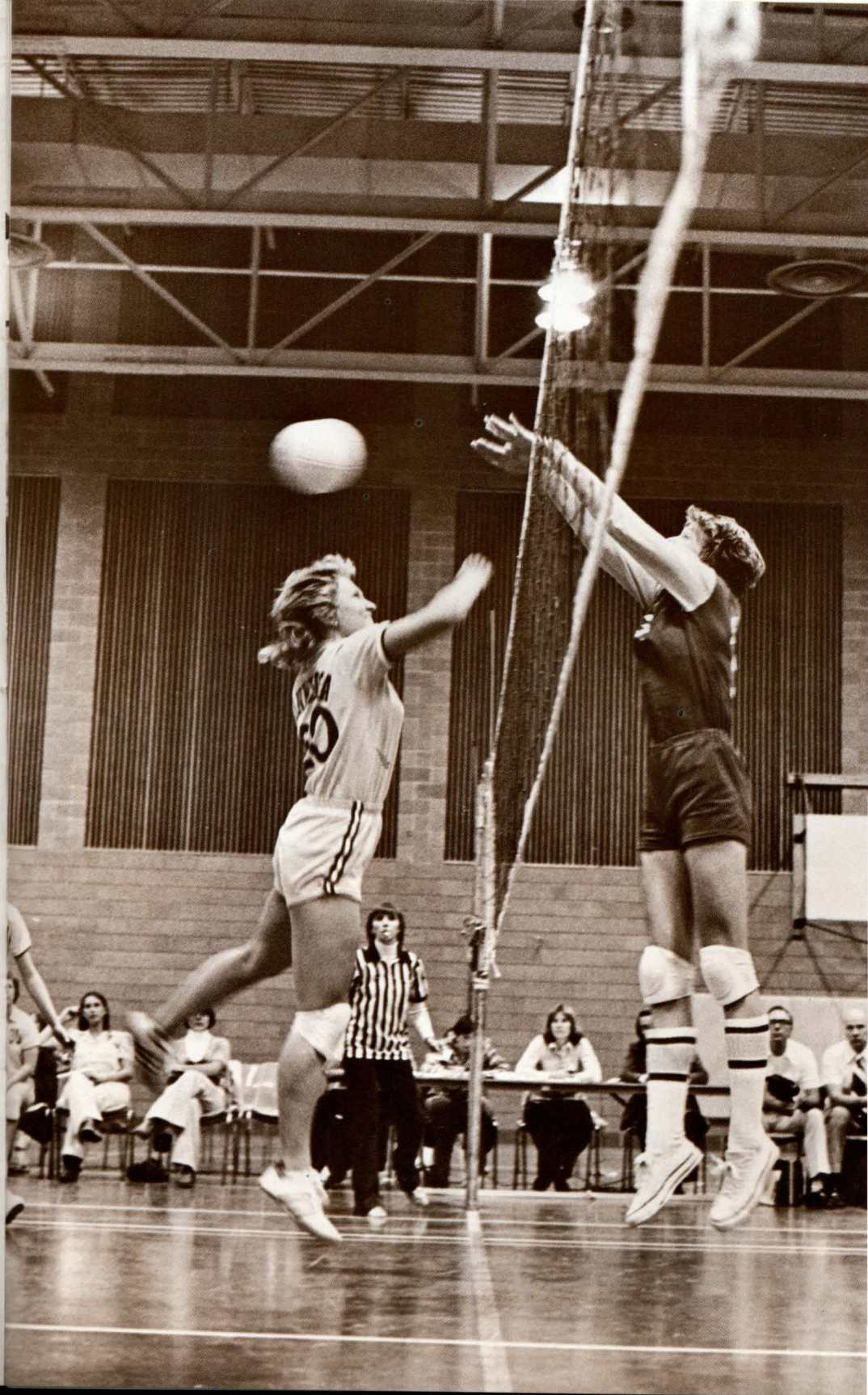
"This could be our best year," Wells prophesizes. "Our players are strong and experienced and we'll definitely have more powerful serving and blocking; I believe we can capture the state and Region 6 titles this year and go on to AIAW Nationals."

Last year Minnesota took second in the MAIAW tournament, with St. Cloud State capturing the title. In Region 6 play, Minnesota was third, with Southwest Missouri State first and the University of Nebraska second. "Both teams will provide stiff competition again this year in Region 6," says Wells. "We must capture first or second place at Region 6 to go on to AIAW Nationals at Brigham Young University this year . . . and I feel confident enough that we can do it."

Though volleyball has long been dominated by California schools, along with Hawaii, Texas, Brigham Young U — places where kids start playing young, all-year-round, and "jumping in the sand," things are beginning to change. Says Wells: "I'm starting to see our Region 6 teams become stronger and stronger and more able to compete with the top Western teams such as AIAW top-placer, U of So. California and second placer, UCLA."

Returning Gopher women this season are Monika Lacis, junior and a setter; Patti Hagemeyer, junior, spiker; and Anita Lacis, sophomore, spiker. Joining these seasoned collegiate players are freshmen Julie Christiansen, Stacy Godwin and Kathy Ohler — all from Minnesota.

"I'll say it again," says Wells, "This could be our best year."





Field Hockey

Beginning this season the Gopher women's field hockey team will compete in the AIAW structure rather than the U.S. Field Hockey Association (USFHA) structure under which it's always operated.

"Basically what this means," says coach Ruth Christianson, "is that we will go from the USFHA model where the goal was to be picked as an individual for the national team, to a very competitive team situation under AIAW. What else it can mean is that we have a chance at winning in the state and Region 6."

But she acknowledges that it will be tough. Entering her fourth year as field hockey coach, Christianson cannot ignore the competition. "Last season our win-loss was 5-18," says Ruth. "Part of the reason was the strong competition provided by Bemidji State (ranked 7th in the nation); Carleton College which placed third in the region; and Concordia-Moorhead."

Last year, too, she says, though her team played and worked well together, they had difficulty scoring. Seven of the team players were chosen for the prestigious North Central College - North teams — which is quite an honor — and she hopes that the top-notch individual performances will continue.

This coming season Christianson will be working with her most experienced team in four years. Returning are Annette Margarit, a senior from Richfield and a top defensive player; Ruth Schmidt, one of the top scorers; a senior from Richfield, Minnesota; Chris Paulos, a junior from St. Paul, who was last year's top scorer; Diane Scovill, St. Paul senior and offensive player; Pat Doenges, a senior from St. Paul on defense; and incoming freshman Stephanie Gaw from Jenkintown, Pennsylvania, a top high school field hockey player.

The outlook for this season is optimistic, says Ruth, but it's also realistic. Competition at the state and Region 6 AIAW level is dominated by Minnesota schools: Bemidji State, Carleton, Concordia-Moorhead. The Missouri schools notably Southwest Missouri State at Springfield, provide fuel to Region 6 AIAW battle. At the AIAW national level, the sport appears to be controlled by the Eastern schools, such as last year's winner, West Chester, (Pa.) College. "Out East field hockey is quite popular," explains Christianson, "and they play it in the high schools. Both Pennsylvania and Connecticut produce strong teams, but we're starting to catch up here in the Midwest."



Annette Margarit





Cross Country

"Running can be a way of life," speculates cross country coach Mike Lawless, "it's something that gets in the blood; you even feel bad when you can't run each day."

The lure of cross country (a three mile run over grassy, hilly, rolling terrain) is the lure of long hours of training and a desire for competition. Running — which at present can be labeled an international movement — spills over into how you live and work. Running sensitizes the body to the land, to itself. Some runners even experience what they call a special "sense of the present." One thing is certain: After all that work, victory is indeed sweet.

Runners are an undaunted breed. For example, take the run last year at Lake Nokomis. November 3, 1976. 35 degrees with a nasty, bitter wind whipping across the lake. 70 young women braved three miles amid frost-bite conditions, with Cathie Twomey and Laura Clark of Golden Valley Lutheran College emerging both victorious with a dead heat at 16:44.

20-year-old Cathie Twomey, a senior from Golden Valley will lead the Gopher squad this year.

Her record is impressive. A tireless competitor who constantly runs, she finished sixth at AIAW Nationals and placed first among the Big Ten schools and set the course record last season.

Other front runners on the squad will be Michele Vogel, a junior from Roseville; Anita Macias, a senior from Mound; Maggie Munro, a senior from Minneapolis; Mary Peninger, a junior from Maplewood; and talented newcomer Laurie Orness, a freshman from Mankato. Laurie was second in the mile in the Minnesota State High School Track meet this year and second in cross country. Lawless will be looking for strong performances from all of them.

At the state level, where Minnesota took second place, the competition will again come from defending champion Golden Valley Lutheran College, with St. Cloud and St. Olaf both improved and tougher. Minnesota will host the Minnesota Invitational (Big Ten schools) this October 29 at the University Golf Course.

Optimistic but cautious in his predictions, Lawless sees a good season this fall but notes that it will be tougher. "I'm seeing better and tougher athletes each year," he says, "which means the competition just gets stiffer every year."





Basketball

"Building the women's basketball program is going to be my first priority," says Ellen Mosher. "I plan to meet with area high school coaches, get involved in the state program as I was in Iowa and show everyone that we are on our way to building a strong program here at Minnesota."

Mosher, fresh from two successful years coaching women's basketball at UCLA, has built a solid reputation for herself nationally and hopes to continue on the forefront of the booming women's basketball movement. Having played strong high school basketball in Iowa, Mosher hopes support for the game can be fostered in Minnesota, too. With the Minnesota State High School Girl's Basketball Tournament entering its third year, the potential for the sport is great . . . and growing.

Other top Mosher priorities include setting up sport camps sponsored by the Department of Women's Intercollegiate Athletics, implementing a series of coaches clinics and hosting the Minnesota Invitational (Big Ten schools) this February. Ellen is also looking forward to two scheduled doubleheaders with the Gopher men at Williams Arena. "It will be super exposure for us," she says.

Returning to the squad this year — among others — will be last year's co-captains, senior Rachel Gaugert, from Alexandria, Minnesota and senior Denise Erstad. Coach Mosher will be working with them and the Gopher women on skill-building. "This year we're going to lay down the foundation for the Minnesota program," she emphasizes.

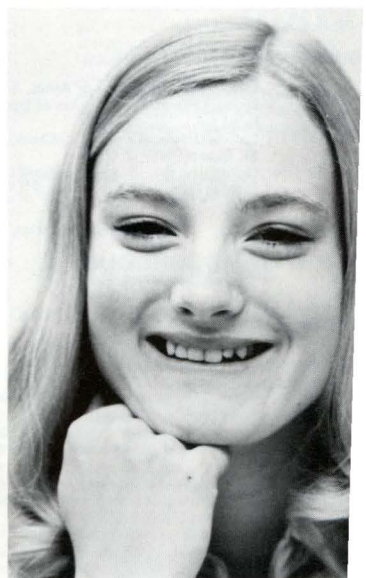
Several returning team members gained vital experience when Minnesota hosted the AIAW National Basketball Championships in March 1977. Receiving an automatic berth as host, the Gophers had the opportunity of playing the top-seeded team, Delta State (who won the title for the third straight year) and the University of Missouri-Columbia. Everyone agreed that having the tournament in our own Williams Arena and watching the country's top 16 teams do battle was invaluable. AIAW Nationals this year are at UCLA in March '78, and if Minnesota does well, Mosher could come full circle.



Eiland



Erstad



Gaugert



Gymnastics

Gymnastics is — along with basketball — a top-drawing collegiate women's sport.

At the AIAW Nationals at Central Michigan University this April, officials had to turn fans away. "It was jammed," recalls AIAW Championships Commissioner Leanne Grotke of Indiana University. More than 7100 fans attended the three sessions of competition, climaxed by a standing-room-only crowd in excess of 3600 at the individual event championships where several hundred people had to be turned away.

Coaches Katalin and Gabor Deli who knew what a fantastic sport it was all along enter their fifth season this year with the majority of their team intact. Returning to the squad is Gopher top all-rounder, junior Bonnie Berning, MAIAW all-around champion who also placed fourth in 1975-76 Big Ten schools competition; Ida Chang, a sophomore from St. Paul, all-rounder; Jean Rondano, a junior, vaulter; sophomore Jean Meyer, an all-rounder from New Ulm; sophomore Betsy Anderson, Edina all-rounder; Sheryl Nelson, vault; and Katie Stevens, bars.

Rounding out the squad are newcomers Janice Englander, a freshman all-rounder from Milwaukee; Cindy Ripchart, from Burnsville, on the beam; Katie Coenen of Richfield, who took third in bars at the Minnesota State High School Championships; Marcia Plummer, Edina, an all-rounder who captured third place at the high school championships; Lynn Eilingsen, an all-rounder from Owatonna; and all arounder Mary Haik from Robbinsdale.

At the state level, the Gopher women will be going for their third state victory and "we can do it," says Katalin. Last year not only did they win, with Bonnie Berning emerging as the top all-rounder, but Minnesota took first in every event. Competition will again come from second place Winona and third place Gustavus Adolphus.

Last year among Big Ten schools, the struggle was fierce, says Katalin. "We took fourth place, having done poorly on bars; this year we are going to have to work much harder to take a top place against University of Illinois at Champaign with their star, Olympian Nancy Thies, Michigan State, and Wisconsin."

At Region 6, Minnesota took fifth place last season with top-level Southwest Missouri State taking first. The team will do better this year, say the Delis, but SWMS will provide strong competition with St. Paul gymnast Colleen Casey, a 1976 Olympian who joined their squad this fall.

Women's Intercollegiate Athletics Timetable 1977-78



FALL GAME SCHEDULE

Volleyball

* Home games at Bierman Athletic Facility

Sept. 23-24	Illinois State Invitational at Normal, 6:30 pm
Sept. 30-Oct. 1	Wisconsin Invitational at Madison, 4:00 pm
Oct. 4	So. Dakota/Mankato at Mankato, 6:00 pm
Oct. 5*	Southwest Minn. State/U-Wisc.-Eau Claire, 6:00 pm
Oct. 7-8	University of Missouri Invitational at St. Louis, 7:00 pm
Oct. 12	Gustavus Adolphus at St. Peter, 7:00 pm
Oct. 14-15	University of Nebraska Invitational at Lincoln, 5:00 pm
Oct. 18*	University of Minnesota-Morris/UM-Duluth at 6:00 pm
Oct. 21-22*	Minnesota Invitational (St. Cloud, Bemidji, Augsburg, Mankato, Gustavus, Winona, St. Catherine, LaCrosse and Iowa State) at 10:00 am
Oct. 25	Winona State/University of Wisc. at LaCrosse, 6:30 pm
Oct. 26	St. Cloud State, 6:00 pm
Oct. 28-29	University of Wisconsin Invitational (Big Ten schools) at Madison
Oct. 31	St. Catherine/Augsburg at Augsburg, 6:00 pm
Nov. 2*	River Falls/Dr. Martin Luther College, 6:00 pm
Nov. 4-5	MAIAW State Tournament at Macalester, St. Paul
Nov. 9*	St. Cloud State, 7:00 pm
Nov. 12	University of Nebraska Invitational at Lincoln, 9:00 am
Nov. 17-19	IAIW Region 6 Tournament-Univ. of No. Dakota at Grand Forks
Dec. 8-10	IAIW National Tournament at Brigham Young University, Provo, Utah

Cross Country

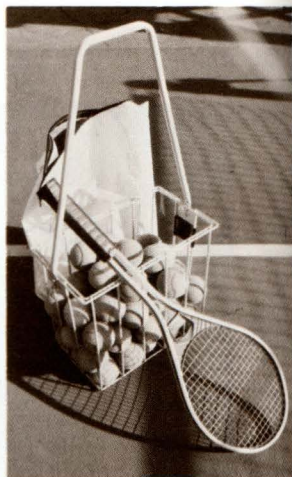
* Home events at University Golf Course

Sept. 23	Golden Valley Lutheran Invitational at Lake Nokomis, 4:00 pm
Oct. 1*	University of Wisconsin-Madison, 10:00 am
Oct. 8	Iowa State Invitational at Ames, 10:00 am
Oct. 15.	So. Illinois Invitational at Carbondale
Oct. 22	University of Wisconsin at LaCrosse
Oct. 29*	University of Minnesota Invitational (Big Ten schools), 11:00 am
Nov. 5	IAIW Region 6 Meet at Iowa State, Ames
Nov. 12	MAIAW State Meet at U-Minnesota at Duluth
Nov. 19	IAIW Nationals at University of Texas at Austin

Field Hockey

* Home games at Bierman Field

Sept. 20	Moorhead State/Concordia-Moorhead at Moorhead, 2:00/4:00 pm
Sept. 24	Luther College at Decorah, Iowa, 1:00 pm
Sept 30-Oct. 1	Bemidji State Invitational at Bemidji
Oct. 4	University of Wisc.-LaCrosse/U-Wisc.-Madison at LaCrosse, 2:30/4:00 pm
Oct. 7*	University of North Dakota, 4:00 pm
Oct. 8*	Rating Day (River Falls, Minnesota Club, Bemidji, U-No. Dakota, UM-Duluth) 9:00 am
Oct. 12	Carleton College at Northfield, 4:00 pm
Oct. 15	River Falls Invitational at River Falls, Wisc.
Oct. 18*	River Falls/Minnesota Club, 3:00/4:30 pm
Oct. 19*	Carleton College, 4:00 pm
Oct. 22*	University of Minnesota-Duluth, 11:00 am
Oct. 28-29	MAIAW State Meet at Carleton College, Northfield
Nov. 2	University of Wisconsin at River Falls, 3:30 pm
Nov. 5	Carleton/Minnesota Club at Northfield
Nov. 11-12	IAIW Region 6 Tournament-OPEN LOCATION
Nov. 24-26	IAIW Nationals at University of Colorado, Denver



Golf

* Home events at University Golf Course

Sept. 9-11	Wisconsin Invitational at Madison
Sept 19-21	Susie Maxwell Berning Classic at Oklahoma City
Sept 23-24	Iowa State Invitational at Ames
Sept 30-Oct. 1*	AIAW Region 6 Tournament 9:00 am
Oct. 7-8	Indiana Invitational at Bloomington
Oct. 14-15	University of Northern Iowa at Cedar Falls
Oct. 21-22	University of Iowa at Iowa City
Nov. 2-4	Golden Hurricane Invitational at Tulsa University

Tennis

* Home events on 4th Street Courts

Oct. 7	Iowa State University at Ames, 3:30 pm
Oct. 8	Drake University/U-Kansas at Des Moines, 8:30 am
Oct. 14-15	LaCrosse Invitational at LaCrosse, noon
Oct. 18*	St. Cloud State, 2:00 pm
Oct. 21-22	University of Iowa Invitational at Iowa City
Oct 29	U-Wisc. at Madison

WINTER GAME SCHEDULE

Basketball

* Home games in Williams Arena

Nov. 25-26	Drake Invitational at Des Moines (Creighton, Indiana State, Drake)
Dec. 2-3*	Lakehead University (Thunder Bay), 8:00 pm
Dec. 7	University of Wisconsin-Eau Claire, 7:00 pm
Dec. 17*	William Penn College, 7:30 pm
Dec. 29	Kansas State at Manhattan, 7:30 pm
Dec. 30	University of Nebraska-Lincoln, 7:30 pm
Jan. 6*	Mankato State, 8:00 pm
Jan. 9	University of Wisconsin-River Falls
Jan. 13	Iowa State University at Ames, 7:30 pm
Jan. 14	Grandview College at Des Moines, 2:00 pm
Jan. 17	Winona State, 7:30 pm
Jan. 19*	Doubleheader Night - Gopher women play Univ-

Jan. 23*
Jan. 25*
Jan. 27
Jan. 28

Jan. 31
Feb. 1
Feb. 3*
Feb. 4

Feb. 6
Feb. 10-11*
Feb. 13
Feb. 15*
Feb. 18
Feb. 20
Feb. 24-25

Mar. 9-11
Mar. 22-25

ersity of Wisconsin-LaCrosse in Williams Arena at 5:45 pm. Gopher men play University of Illinois

St. Cloud State, 8:00 pm
University of Minnesota-Duluth, 8:00 pm
Southwest State (Marshall, Minn.), 5:45 pm
South Dakota State University at Brookings, 6:00 pm

Mankato State, 7:45 pm
St. Cloud State, 7:30 pm
Simpson College (Indianola, Iowa), 8:00 pm
Doubleheader Night - Gopher women play Bemidji State in Williams Arena at 5:45 pm;

Gopher men play Northwestern University Dr. Martin Luther College at New Ulm, 7:30 pm
Minnesota Invitational (Big Ten schools)
Concordia College, St. Paul, 8:00 pm
College of St. Catherine, 8:00 pm
University of Iowa at Iowa City
University of Wisconsin at LaCrosse, 7:00 pm
MAIAW State Tournament, Augsburg College, Minneapolis

AIAW Region 6 Tournament-OPEN LOCATION
AIAW Nationals at University of California at Los Angeles

Gymnastics

* Home events at Williams Arena

Nov. 12* University of Nebraska
Nov. 19 University of Iowa Invitational at Iowa City (Iowa State, Wichita State, Drake, Grandview) 10:00 am

Dec. 3 Nebraska Invitational at Lincoln (South Dakota, Oklahoma State)

Dec. 17* University of Minnesota Invitational Bemidji, St. Cloud, Winona, 9:00 am

Jan. 14 Grandview, Gustavus Adolphus, Southern Illinois at St. Peter, Minnesota, 10:00 am

Jan. 24 St. Cloud State, 7:00 pm

Jan. 26 Winona State, 6:00 pm

Jan. 28* University of Minnesota Invitational (Mankato, Bemidji, Grandview), 9:00 am

Feb. 4 Southwest Missouri State/University of Iowa at Springfield, Missouri

Feb. 10-11 University of Iowa Invitational (Big Ten schools) at Iowa City

Feb. 24-25 MAIAW State Meet at Winona

Mar. 9-11 AIAW Region 6 Meet - OPEN LOCATION

Mar 31-Apr. 1 AIAW National Meet at University of Washington-Seattle



Meyer



Berning



Chang



Swimming & Diving

It looks like another excellent year for the spirited and confident Gopher swimming & diving squad.

Last season six team members went to the prestigious AIAW Nationals at Brown University in Rhode Island, with three-time All-American Cindy Anderson of Edina placing 14th in the nation in backstroke. The team chalked up a remarkable 10-0 dual meet record, extending their four year total to 38-2. And much of the credit for four All-Americans and an impressive four-year dual meet record belongs to Jean Freeman, a young woman dedicated to the pursuit of excellence.

In four years Freeman has coached four All-Americans: Terry Ganley, a four-time All-American from Minneapolis, who will come on board as Jean's assistant this season. Terry also has the distinction of being the first female college athlete from Minnesota to receive All-American status (1974); Cindy Anderson, junior; Joni Ellis, from Golden Valley; and Cheryl Swanum, who graduated this year.

Back in the pool this year will be co-captains Gail Griffin and Gail Cording, who, says Freeman, will both provide outstanding leadership for the squad in and out of the water. And four of the talented young women who went to Nationals will return: Kim Olson, junior, butterfly; Sue Blosky, sophomore, freestyler; Kaye Gustafson, sophomore, freestyler; and Cindy Anderson, junior; backstroke. Says Freeman: "We have gained some experienced freshmen to round out the squad along with a large number of people who stayed and strained over the summer months."

A major goal for the team will be to better their third place finish at the AIAW Region 6 meet, again with stiff competition from winner University of Kansas and runner-up University of Nebraska.

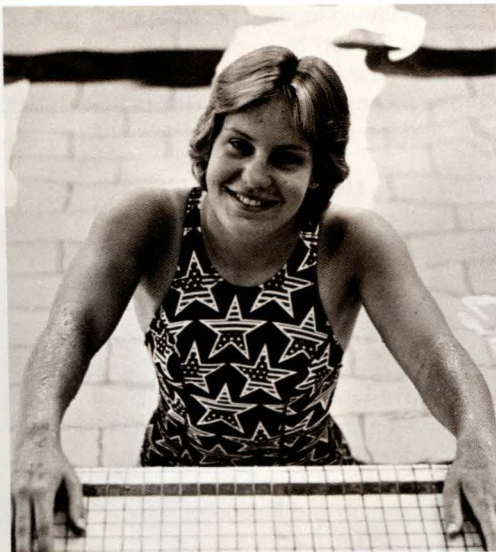
In diving, coach Oman will be looking for leadership from captain Janet Usher, a senior from Houston, Texas, and talented newcomer Chrissy Curry. Curry, the 1976 Minnesota State High School Diving Champion, is expected, along with senior Lynn Sawitzke from Richfield and freshman Mary Maley from Minneapolis, to greatly improve the Gopher squad.



Griffin



Sawitzke



Anderson



Ganley



Track & Field

In track & field, coach Mike Lawless expects a good year with strong individual and team performances, but he says, echoing other coaches, each year is getting tougher. "The schools at all levels are beginning to produce very skilled and highly motivated athletes; that's why the teams to beat get harder to beat each year."

All the tracksters — five of them — who qualified and participated in the AIAW Nationals held at UCLA in May '77 will be back. Leading the team again is Gopher standout, distance runner Cathie Twomey, a 20-year-old senior from Golden Valley. Twomey finished 11th in the nation at AIAW Nationals in the 1500 meter run. At the state level she broke the record for the ½ mile and mile and among Big Ten school competition, she captured first place in the mile and second place in the ½ mile. A fierce competitor, Twomey's last collegiate year may be her best, says Lawless.

CeCe Cox, a 21-year-old Roseville senior, finally conquered her knee problems and experienced a good season this year and expects to compete more heavily this season in the 400 and 800 meter runs. At the Region 6 meet, CeCe — a former high school track champion — broke the meet record at Wichita State in 800 meters and ran in the 800 meter and 2-mile relay team at AIAW Nationals.

Other returning standout performers are Maggie Munro, a senior from Minneapolis, who competed at Nationals in the 800 meter and says Lawless, is a good steady runner; senior Michele Vogel from Roseville who ran in the 2-mile relay at Nationals; and sophomore pentathlete Vicky Peterson, from Northfield, who placed 23rd at Nationals. Talented newcomers to the squad are Laurie Orness, a freshman distance runner from Mankato and freshman sprinter Tara Kazemba from Winona.

"Overall we look strong this year," says Lawless, "especially in running and hurdling, with Nancy Broughton looking good as our returning hurdler; our weakest events are the shot put, discus and javelin." At the state level, Moorhead, St. Cloud, St. Olaf and Golden Valley Lutheran will continue to provide the competition; in Region 6 it's Iowa State, Graceland and Nebraska. And in May '78 Lawless hopes to have a good portion of his team at AIAW Nationals again, competing against consistently strong California and Texas teams.



Twomey



Munro



Cox



Peterson



Tennis

Ellie Peden is in an enviable coaching position. Going into her third season, no one from her current — and experienced — team is graduating and several highly-ranked and talented newcomers will join the squad this fall.

Again this year the Gopher roster is headed by champions Patty Moran and Marnie Wheaton, joined by Meg Horan, a junior from Rochester, Minnesota, who's coming back to the UM this year.

Last season, Patty Moran, the 1974 National Junior Canadian champion and 1976 # 1 singles champ among Big Ten schools, was runner-up in the Region 6 AIAW competition and went to the AIAW Nationals in Baton Rouge. Wheaton was runner-up among Big Ten school competition last season in # 2 singles.

At the state level, the team captured first place, Moran took singles, and the duo of Moran/Wheaton took the doubles championship.

"This year my goal is to have the whole team go to AIAW Nationals," says Peden. "It's great for my gals to see and participate with the best in the country; it's a great motivator and a terrific experience." To go to Nationals the team must take first or second place at the AIAW Region 6 level; last year they were third out of 20 teams. This year we have an excellent chance, she feels.

As with last year, the stiffest Region 6 competition will come from first place Southwest Missouri State and runner-up University of Kansas at Lawrence. The University of Missouri and Stephens College, both from Columbia, Mo. will also provide strong competition.

Along with setting her eye on Nationals, this is the first year that Peden will take her team on a spring break tour, playing tournaments at Region 6 schools like the above. "This is also the year we'll be flying to some meets," she says, "and that's going to be exciting, too."



Moran



Wheaton



Golf

For many coaches, summer is a time to do your own thing. For golf coach Carol Isaacs summer is a busman's holiday.

In June she and team members Julie Gumlia and Sue Jaqua flew to AIAW Nationals at the University of Hawaii in Honolulu. In July she attended the U.S. Women's Open, this year held in Minnesota at the Hazeltine Golf Club in Chaska, with Gumlia, Kathy Williams and former Gopher Ingrid Gallo participating. She was at the Minnesota State Amateur Championships and the Patty Berg Golf Classic at Keller in St. Paul. . . and that was just a few of them.

The main event for the upcoming fall golf season is the Region 6 Golf Tournament with 15 collegiate teams competing for the title; Minnesota will host the tourney on September 30-October 1. Last year the Gophers placed fourth out of 11 teams, with top honors going to Stephens College, second to the University of Nebraska, third to the University of Kansas. Says Isaacs: "I think with the talented and experienced team I have this year, we can go as a team to the AIAW Nationals."

Returning is top Gopher golfer Julie Gumlia, a 20-year-old junior from Edina — and a seasoned veteran. This summer — to hit the high spots — she competed in the prestigious Women's U.S. Open, the Women's Western Amateur and the Trans-National in North Carolina. Last season Julie was medalist at the Indiana Invitational, a top collegiate event and runner-up individually among Big Ten school competition and Region 6. "Julie is very talented," says Isaacs, "and I look for another good year for her."

Other seasoned players returning to the squad are captain Sue Jaqua, a senior from Fairmont, Minnesota, who also competed in Nationals; seniors Jody Christensen, from St. Louis Park, and Therese Cragg of St. Paul. A new addition to the squad will be Kathy Williams, who at 17 was the youngest woman to compete in this summer's U.S. Open. She is also title-holder for the First Minnesota State High School Girl's Golf Championship held this June. Joining Kathy is Jane Jensen, a transfer student, originally from Watertown, Minnesota, who also competed in the Nationals.

Coach Isaacs has a strong team on her hands: "This is my best team ever; we've only lost one person and have good new people . . . my expectations are high."

Photo: Sue Andrews



At this year's Women's U.S. Open held at Hazeltine in Chaska, Minnesota —
(L) Golf coach Carol Isaacs, former UM golfer Ingrid Gallo, Patty Berg,
Kathy Williams and Julie Gumlia.

Sue Jaqua





Softball

Softball coach Linda Wells has the distinction of playing as a professional in the sport she coaches. As a member of the St. Louis Hummers this summer in the International Women's Professional Softball Association, Wells pitched and competed with the best pro women players in the country.

And she conveys this expertise to her team.

Last season Gopher women won the MAIAW title for the second year in a row, battling for first place with a tough Moorhead State; taking third was St. Cloud State.

"We expect to win the state title again," says Wells. "All but two team members are returning this season which means we'll have a strong pitching staff and an experienced team, along with some talented newcomers joining the squad."

Returning will be standout pitcher Vicki Swanson, a senior from Jamestown, North Dakota; Denise Erstad, second base and a senior; Shelly Medernach, the Gopher top run-producer, a junior from So. St. Paul; shortstop Mary Owen, a junior from Minnetonka; and pitcher Mary O'Brien from Watertown, Minnesota. Talented freshmen newcomers, all from Minnesota are: Linda Arford, Columbia Heights, second base and Dani Ortler, pitcher from Coon Rapids.

At the Region 6 level last season, the Gopher women competed as a state champion but were eliminated by Southwest Missouri State and Northern State College of Aberdeen, South Dakota. "We were up against some strong pitching," says Wells. "However, with this year's team I think we can expect to place in the top three slots at Region 6."

Last year the College World Series (AIAW sponsors this event in conjunction with the American Softball Association) was held at the University of Nebraska in Omaha with a tough University of Northern Iowa taking the title; it will be held there again in late May '78. "With the power we have this season, I'm hopeful we can take first or second place at Region 6 so we could qualify for the World Series; we have a good shot at it this year," Wells predicts.



Pitcher Vicki Swanson



Top run-producer Shelly Medernach

GOLD COUNTRY IS YOUR COUNTRY

"Meet Goldie"



You will be seeing a lot of this small animal, this rambunctious creature, on the University of Minnesota campus — it's our mascot, Goldie the Golden Gopher.

Goldie presides at games, leads cheers, dazzles us with enthusiasm. Goldie's likeness appears all over campus on hats, T-shirts, sweaters, notebooks, and publications. Stuffed "Goldies" are sold by the thousands. But the original Goldie embodies the hearty spirit of the women and men of the University of Minnesota.

Since 1857, Minnesota has been identified as the Gopher State — a nickname that stuck. Tagging Minnesotans as Gophers didn't stop at the state level, it went on to encompass the University of Minnesota.

In the early thirties, the Minnesota football teams, under the guidance of coach Bernie Bierman, were establishing themselves as national champions. During the championships, the local press described the Gopher teams as the "Golden shirted horde" and the "golden swarm." Those descriptions coincided with the team's change to golden-colored jerseys, bringing about the name, the Golden Gophers . . . and we've been using it ever since.

AIAW - Our Governing Organization



Currently over 800 colleges and universities throughout the country are members of AIAW, the Association for Intercollegiate Athletics for Women. Formally organized in 1971-72, AIAW replaced the Commission on Intercollegiate Athletics for Women (CIAW) which was originated in 1967 by the Division for Girls and Women's Sport of the American Association for Health, Physical Education and Recreation (AAHPER). This Commission established the national championships and encouraged organization of colleges, universities and women physical educators to govern intercollegiate competition for women at the local, state and regional level.

The AIAW provides a governing body for initiating and maintaining standards of excellence in women's intercollegiate athletic programs. In addition the AIAW conducts twenty national championships for large and small colleges in twelve different sports. These include: Volleyball, basketball, golf, tennis, track and field, cross country, swimming and diving, gymnastics, field hockey, badminton and softball.

The AIAW will continue to guide national championships; give assistance to regional and local governing groups; and implement, at the national level, the use of policies set up by AIAW.

Officers of AIAW are elected by member institutions. In addition one representative from each of the nine national regions comprising AIAW is elected by member schools of that region. One representative is elected by the respective large college membership, small college and junior/community college. Also a student representative is elected to serve on the Executive Board.

(Minnesota is part of AIAW Region 6 which is composed of Iowa, Kansas, Missouri, Nebraska, North Dakota and South Dakota.)

AIAW OFFICERS

President: Judith R. Holland, University of California at Los Angeles
President-Elect: Charlotte West, So. Illinois University
Commissioner of Championships, Large College: Leanne Grotke,
Indiana University
MAIAW President: Mylla Urban, Carleton College
MAIAW President-Elect: Mary Willerscheidt, Mankato College
Region 6 Rep: Mary Jo Wynn, Southwest Missouri State University
Large College Rep: Mary Roby, University of Arizona-Tucson
Minnesota Rep to Region 6: Joyce Locke, Winona State, Winona, Minnesota
Ethics and Eligibility Chairperson: Joan S. Hult, University of Maryland
Treasurer: Jan C. Watson, Appalachian State University, Boone, N.C.

THIS IS GOLD COUNTRY



The University of Minnesota was founded in February of 1851, seven years before the territory achieved statehood, and is enjoying its 126th year of serving the higher educational needs of its people.

WE RANK HIGH IN THE NATION - FIRST IN FEMALE ENROLLMENT

The University ranks 8th nationally in full-time student enrollment (including extension students) with nearly 76,000 people enrolled at its six campuses which include Minneapolis, St. Paul, Crookston, Duluth, Morris and Waseca.

The Twin Cities campus alone totals 64,100 full and part-time students, making it the largest single campus in the country based on enrollment. The Twin Cities campus also ranks first in the nation in female enrollment with nearly 29,000 women collegians.

OUR GRADUATES CONTRIBUTE TO OUR SUCCESS

The University is dedicated to the task of training the youth of Minnesota and the region and its success is measured in part by the success of its graduates or faculty.

Nine have been Nobel Prize winners including Norman C. Borlaug (peace prize 1970), Melvin Calvin (chemistry 1961), John Bradeen (physics 1956, 1972), Walter H. Brattain (physics 1956), Philip S. Hench (medicine 1950), Edward C. Kendall (medicine 1950), Ernest O. Lawrence (physics 1939), William N. Lipscomb (chemistry 1976), and Saul Bellow (literature 1976). Two have won Pulitzer Prizes including John Berryman (1965) and Dominick Argento (1975).

Other noted graduates include Dr. Christiaan Barnard and Dr. Norman E. Shumway pioneers in heart transplant surgery, U. S. Senator and former Vice President Hubert H. Humphrey, U.S. Senator Wendell Anderson (also a former hockey letterman), journalists Eric Severied and Harry Reasoner, and Hedly Donovan of Time Magazine, Lawrence Hasstead, physicist, and Peter Graves and James Arness, actors.

UNIVERSITY TRAINS THROUGH CONTINUING EDUCATION PROGRAMS

In addition to providing regular collegiate instruction for students on its campuses, the university gives specialized training to thousands of other Minnesotans through continuing education programs. Also its staff members, who are county agents, home agents, 4-H Club agents and recreation and health consultants, regularly assist citizens of the state in their communities.

VITAL RESEARCH CONDUCTED AT U OF M

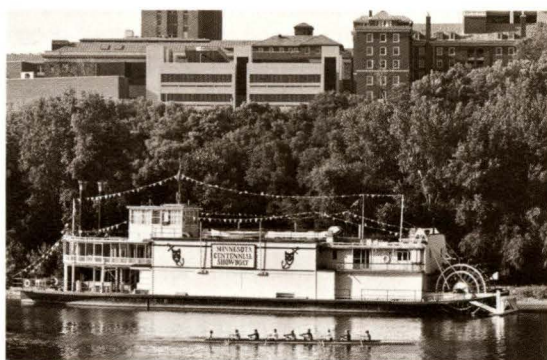
University scientists are constantly working on research of vital importance to the future welfare of the state and the nation in the school's diverse research laboratories on each of the campuses and the several agricultural experiment stations scattered throughout the state.

University researchers continue studying projects that concern heart surgery, cancer, drainage control, gamma radiation, teacher training, municipal government, space physics, nuclear energy, modern mathematics, science courses for primary and secondary schools and new creation of varieties in agricultural and horticultural species.

UNIVERSITY MAKES MAJOR CULTURAL CONTRIBUTIONS

The institution is a cultural hub of the Upper Mississippi Valley area and the home of several cultural groups including the University Artists Course, University Theatre, the Mississippi River Showboat, the Minnesota Orchestra and area performance of the Metropolitan Opera.

Contributions to the school from the people of Minnesota have led to the construction of the James Ford Bell Museum of Natural History, the Journalism School's Murphy Hall, the Variety Club Heart Hospital, the Children's Rehabilitation Hospital and the Mayo Memorial Hospital.



Vital Information

ADMISSION

Needless to say, the University of Minnesota is a very large system with a number of individual colleges — each of which have their own admission requirements and procedures. Prospective students are encouraged to seek applications and specific college bulletins as soon as possible by contacting: Admissions Office, 240 Williamson Hall, University of Minnesota, Minneapolis, Minnesota 55455. Phone: (612) 373-2154. Again, we suggest you contact this office soon to get the paper work rolling. Through bulletins and counseling assistance they can guide you through the intricacies of the admission process.

FINANCIAL AID

You may wish to apply for an athletic grant. This year alone, nearly 50 grants (which at present equals the amount of tuition and fees) were awarded in our ten intercollegiate sports for women.

Athletic grants — based on athletic ability or sports performance skills — are available. A student or a prospective student may receive an athletic grant upon recommendation by her coach. The student must also be in good academic standing and making normal progress towards a degree to be eligible for a grant. However, an offer of a financial award to a prospective student athlete is contingent on her official admittance to the University.

Grants run for one academic year and if a student maintains good grades, makes normal progress toward a degree, and observes conduct as defined by the Code of Ethics for Players and continues to participate on the intercollegiate team, the grant may be renewed annually.

If you are interested, you may write or call the Department of Women's Intercollegiate Athletics for a grant application form. Or you may contact a coach, administrator or other department staff member. And you may apply anytime.

The University of Minnesota Office of Student Financial Aid administers all forms of financial assistance and you are urged to contact them at: Office of Student Financial Aid, University of Minnesota, 107 Armory, Minneapolis, Minnesota 55455. Phone: (612) 373-4142. Again, you are urged to apply as soon as possible.



ELIGIBILITY

Regulations of AIAW state that only undergraduates are eligible for participation in intercollegiate athletics. Also student athletes must have full-time status and be making normal progress toward a university degree. Specific questions regarding eligibility should be referred to the Department of Women's Intercollegiate Athletics, 238 Bierman Athletic Building, 516-15th Avenue S.E., Minneapolis, Minnesota 55454. Phone: (612)373-2255.

FACILITIES

Student athletes have access to several facilities at the University of Minnesota, Minneapolis campus, both for practice and varsity competition. Foremost are Memorial Stadium, a 57,000 seat football stadium, and Williams Arena, an 18,000-seat structure where Gopher women and men compete in basketball and gymnastics. The administrative staffs of both women's and men's intercollegiate athletics are housed in the Bierman Field Athletic Building, which opened its doors in 1972; this multi-purpose facility was named after Bernie Bierman, Gopher football coach from 1932 to 1950. Along with coaches and administrative offices, the Bierman Building houses locker and athletic training facilities, a gym for volleyball, tennis, basketball and recreational sports activities. Behind Bierman is the track, softball and baseball facilities and tennis courts. For tennis, also, varsity women use the Fourth Street Courts. In golf and cross country, Gopher women use the University Golf Course located near the St. Paul Campus. Gopher teams use the Field House for indoor track events and softball and baseball practice, and the Cooke Pool hosts the Gopher swimmers and divers. The University also offers an extensive Recreational Sports department which utilizes some of the same facilities, and is open to any student or faculty member for a fee.



WINNER'S CIRCLE

As a student member of the Department of Women's Intercollegiate Athletics you will receive a copy of the official department publication, "Winner's Circle," which is designed to keep you, the community and all those who support women in sport informed. Each season we highlight student athletes and various department activities.

EQUAL OPPORTUNITY

The University of Minnesota is committed to the policy that all persons shall have equal access to its programs, facilities, and employment without regard to race, creed, color, sex, national origin or handicap.



To the news media

It may be impossible to thank everyone who helped us this past season — but we're going to try. Your efforts were appreciated and on behalf of the women athletes at the University we want to especially mention: Mark Rossen and Doug Nemanic of WCCO-TV for their superb four-part series on "Sharing the Arena" — a look at girl's and women's sport in the Twin Cities; WCCO-TV's Ralph Jon Fritz and Hal Scott; KMSP's George McKenzie; KSTP's Dan Kozlak, Promotion, who created a top announcement for our basketball championships and KSTP'S Tom Ryther and Ed Karow.

Thanks to Victoria Sprague and her hard-working staff at Twin Cities Woman, not only for their support but for their coverage of women and their fine August 1977 issue on "Feeling Strong Now!" A Special Focus on the Sporting Woman." To WCCO-radio commentator Ray Christenson for his coach interviews and to Julie Jensen, WMMR, for her play-by-play and to Carol Robertshaw, Women's Program Director, KUOM.

A special thanks for AIAW National Basketball coverage to Mel Greenberg of the Philadelphia Inquirer for stories and program assistance; Bil Gilbert and Nancy Williamson of Sports Illustrated for their article, along with WomenSports magazine; and, of course, to the Twin Cities press and TV. Special thanks to Gary Libman, John Roe, Joe Soucheray, Max Nichols, Dan Stoneking, Bob Fowler of the Tribune and Star staffs and to Pioneer Press & Dispatch people Arno Goethel, Gregg Wong, Don Riley, Charley Hallman, Mike Augustin, and Carol Lacey. The AIAW National Basketball Championships March '77 was our biggest event ever — and your coverage gets a "A" rating from us.

And thanks to the good — and consistent — coverage of our program by the Minnesota Daily staff, especially Tom Mason and now sports editor Richard Meryhew, and Rick Preiss and Mary Lahr. We look forward to working with you all again this year.



**Ticket and
Upcoming Event
Information
373-2255**

CREDITS: Published by the Sports Information Office of the Department of Women's Intercollegiate Athletics. Copy and photography by Pam Smith. Graphics by Gary Burton, Graphics Consulting Company.

Bierman Field Athletic Building
516-15th Avenue S.E.
Minneapolis, Minnesota 55455