

MEL
Adviser

MINORITY ENROLLMENT REPORT

FALL QUARTER 1990

UNIVERSITY OF MINNESOTA

OFFICE OF STUDENT DEVELOPMENT

STUDENT SUPPORT SERVICES

**Andrew Huang
Office of the Registrar
150 Williamson Hall
625-1530
October 26, 1990**

TABLE OF CONTENTS

	<u>Page</u>
Notes	1
Definitions	2

Figures

1 Enrollment Trends By Minority Group, U of M, Fall Quarters 1972 Through 1990	3
2 New Minority Students By Group, U of M, Fall Quarter 1990	17
3 Minority Enrollment by Group and Level, Twin Cities Campus, U of M, Fall Quarter 1990	24
4 Percentage Change of Minority Students by Group, U of M, 1981 vs 1990, 1986 vs 1990, and 1989 vs 1990	30

Tables

1A Minority Enrollment, By Group and Campus, Fall Quarters 1986 Through 1990	4
1B Minority Enrollment, By Group and College, <u>Twin Cities Campus</u> , Fall Quarters 1986 Through 1990	5
1C Minority Enrollment, By Group and College, <u>Duluth Campus</u> , Fall Quarters 1986 Through 1990	9
2 Minority Enrollment, By Group, Sex and Campus/College, Fall Quarters 1986 Through 1990	10
3 Minority Enrollment, By Group, Registration Status (New vs. Returning), and Campus/College, Fall Quarters 1987 Through 1990	18
4 Minority Enrollment, By Group, Campus and Student Level, Fall Quarters 1987 Through 1990	25
5 Comparison of Minority Enrollment, By Group and Campus, Fall Quarters 1981, and 1986 Through 1990	31

NOTES

1. All data in the report are based on the number of students registered as of the end of the second week of classes.
2. Ethnic background information of students comes either from application forms for admission or request for update of student ethnic data during fall registration. In both cases the supplying of ethnic data is optional.
3. Data for the years other than 1990 are taken from the University of Minnesota Minority Enrollment Report, Fall Quarter 1986 and 1989.
4. The descriptions of the ethnic categories in the report are the latest version used by the United States Department of Education.
5. Data of undergraduate students majoring in Architecture, Landscape Architecture and Environmental Design for fall 1989 and 1990 are reported under the College of Architecture and Landscape Architecture (Architecture/Land. Arch.), a new collegiate unit of the Twin Cities Campus created in July 1989. These students were counted as students of either the Institute of Technology, College of Liberal Arts or College of Agriculture dependent upon the student's major and the unit students registered for classes in 1986, 1987 and 1988.
6. Data for College of Forestry are reported under its new name - College of Natural Resources.
7. Data for College of Home Economics are reported under its new name - College of Human Ecology.
8. Table 1 (Minority Enrollment By Group and Campus/College) and Table 2 (Minority Enrollment by Sex) have been expanded to report five years of data instead of three years.
9. Table 3 (Minority Enrollment: New vs Returning) and Table 4 (Minority Enrollment By Student Level) have been expanded to report four years of data instead of three years.
10. Table 5 has been expanded to include 1981 data for ten year comparison of minority enrollment.

DEFINITIONS

ETHNIC BACKGROUND OF STUDENTS

Black, Non-Hispanic—A person having origins in any of the black racial groups of Africa (except those of Hispanic origin).

American Indian or Alaskan Native—A person having origins in any of the original peoples of North America, and who maintains cultural identification through tribal affiliation or community recognition.

Asian or Pacific Islander—A person having origins in any of the original peoples of the far East, Southeast Asia, the Indian subcontinent, or the Pacific Islands. This area includes, for example, China, Japan, Korea, the Philippine Islands, and Samoa.

Hispanic—A person of Mexican, Puerto Rican, Cuban, Central or South American, or other Spanish culture or origin, regardless of race.

All other students—Includes primarily the following two categories:

White, Non-Hispanic—A person having origins in any of the original peoples of Europe, North Africa or in the Middle East (except those of Hispanic origin).

International Student (Foreign Student)—i.e., Non-Resident Alien: a person who is not a citizen or national of the United States and who is in this country on a temporary basis and does not have the right to remain indefinitely. Resident Aliens, who are not citizens or nationals of the United States and who have been lawfully admitted for permanent residence (and who hold alien registration receipt cards—Form I-151) are included in the appropriate racial/ethnic categories along with United States citizens.

STUDENT LEVEL

Undergraduate Students—Those who have met all requirements for admission to the University and who pursue programs which lead to either bachelor's or associate degrees.

First Professional Students—Those who are enrolled in a professional school or program which requires at least 2 academic years of college work for entrance and a total of at least 6 years for a degree.

Graduate Students—Those who hold the bachelor's or first-professional degree or equivalent and are working toward a master's or doctor's degree.

Unclassified Students—Those who are not candidates for a degree or other formal award and who are taking courses in regular classes with other students.

Figure 1: Enrollment Trends By Minority Group
 University Of Minnesota
 Fall Quarters, 1972 Through 1990

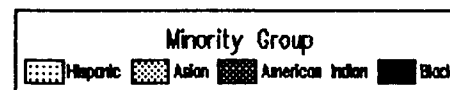
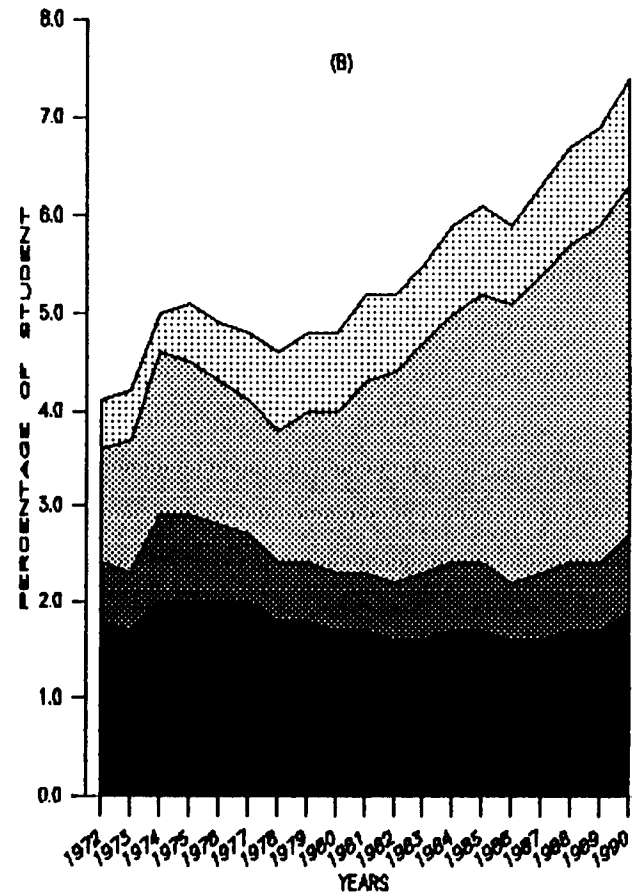
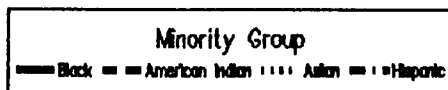
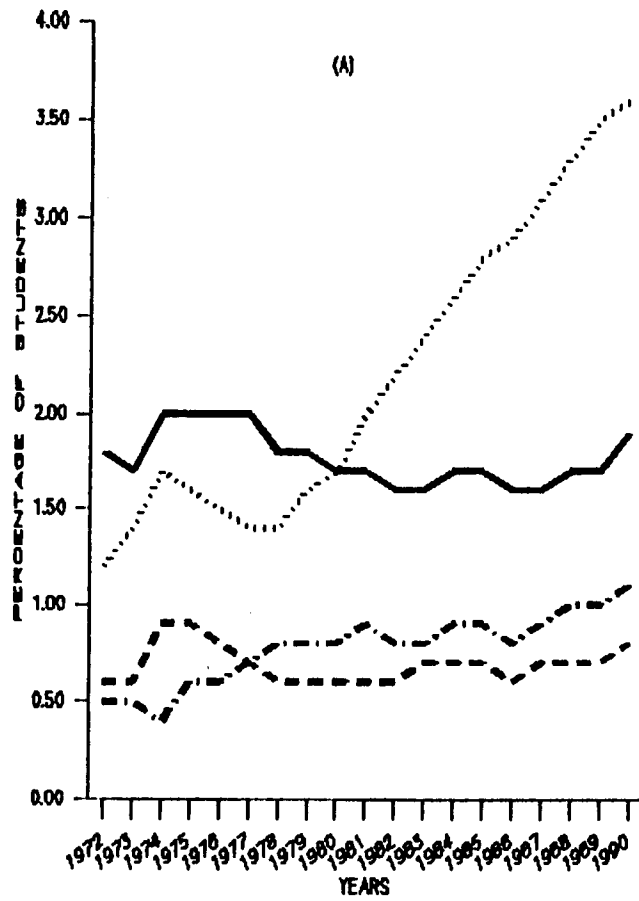


TABLE 1A: MINORITY ENROLLMENT^a, BY GROUP AND CAMPUS, FALL QUARTERS 1986 THROUGH 1990

Campus		Minority Group								Total Minority Students	ALL Other Students		TOTAL ALL STUDENTS		
		Black Non- Hispanic		American Indian or Alaskan		Asian or Pacific Islander		Hispanic			N	%	N	%	
		N	%	N	%	N	%	N	%						
Crookston	1986	0	0.0	5	0.4	1	0.1	16	1.3	22	1.8	1191	98.2	1213	100.0
	1987	0	0.0	5	0.4	1	0.1	11	1.0	17	1.5	1119	98.5	1136	100.0
	1988	3	0.2	6	0.5	2	0.2	12	1.0	23	1.9	1198	98.1	1221	100.0
	1989	4	0.3	5	0.4	2	0.2	17	1.3	28	2.2	1260	97.8	1288	100.0
	1990	8	0.6	11	0.8	1	0.1	21	1.6	41	3.1	1295	96.9	1336	100.0
Duluth	1986	28	0.4	82	1.1	43	0.6	24	0.3	177	2.4	7124	97.6	7301	100.0
	1987	41	0.6	76	1.0	55	0.7	21	0.3	193	2.6	7172	97.4	7365	100.0
	1988	53	0.7	80	1.1	55	0.7	27	0.4	215	2.9	7320	97.1	7535	100.0
	1989	54	0.7	84	1.1	95	1.2	30	0.4	263	3.4	7557	96.6	7820	100.0
	1990	49	0.7	80	1.0	90	1.1	36	0.4	255	3.2	7668	96.8	7923	100.0
Morris	1986	70	3.9	24	1.4	26	1.5	31	1.7	151	8.5	1623	91.5	1774	100.0
	1987	59	3.0	35	1.8	26	1.3	25	1.3	145	7.4	1822	92.6	1967	100.0
	1988	41	2.0	39	1.9	33	1.7	18	0.9	131	6.5	1890	93.5	2021	100.0
	1989	37	1.8	43	2.1	43	2.1	20	1.0	143	7.0	1898	93.0	2041	100.0
	1990	37	1.8	35	1.8	53	2.6	20	1.0	145	7.2	1876	92.8	2021	100.0
Twin Cities	1986	776	1.7	238	0.5	1578	3.5	401	0.9	2993	6.6	42013	93.4	45006	100.0
	1987	811	1.8	253	0.6	1638	3.7	419	0.9	3121	7.0	41172	93.0	44293	100.0
	1988	857	2.0	251	0.6	1711	4.0	477	1.1	3296	7.7	39275	92.3	42571	100.0
	1989	828	2.0	236	0.6	1716	4.2	460	1.1	3240	7.9	37776	92.1	41016	100.0
	1990	924	2.3	274	0.7	1780	4.3	492	1.2	3470	8.5	37502	91.5	40972	100.0
Waseca	1986	7	0.6	1	0.1	2	0.2	0	0.0	10	0.9	1139	99.1	1149	100.0
	1987	4	0.3	1	0.1	1	0.1	1	0.1	7	0.6	1156	99.4	1163	100.0
	1988	2	0.2	1	0.1	2	0.2	0	0.0	5	0.5	1164	99.5	1169	100.0
	1989	9	0.8	0	0.0	3	0.2	0	0.0	12	1.0	1162	99.0	1174	100.0
	1990	10	0.9	1	0.1	2	0.2	2	0.2	15	1.4	1027	98.6	1042	100.0
Total University	1986	881	1.6	350	0.6	1650	2.9	472	0.8	3353	5.9	53090	94.1	56443	100.0
	1987	915	1.6	370	0.7	1721	3.1	477	0.9	3483	6.3	52441	93.8	55924	100.0
	1988	956	1.7	377	0.7	1803	3.3	534	1.0	3670	6.7	50847	93.3	54517	100.0
	1989	932	1.7	368	0.7	1859	3.5	527	1.0	3686	6.9	49653	93.1	53339	100.0
	1990	1028	1.9	401	0.8	1926	3.6	571	1.1	3926	7.4	49368	92.6	53294	100.0

^a Minority students of the University System for Fall 1990 are based on 94.4 percent of the total student population who had provided ethnic background information through the collection methods described in Notes on page 1. The same statistics for each campus are as follows: Crookston (99.6 percent), Duluth (93.2 percent), Morris (99.5 percent), Twin Cities (94.1 percent) and Waseca (99.9 percent).

TABLE 1B: MINORITY ENROLLMENT^a, BY GROUP AND COLLEGE, TWIN CITIES CAMPUS, FALL QUARTERS 1986 THROUGH 1990

College	Minority Group										ALL Other Students		TOTAL ALL STUDENTS	
	Black Non-Hispanic		American Indian or Alaskan		Asian or Pacific Islander		Hispanic		Total Minority Students		N	%	N	%
	N	%	N	%	N	%	N	%	N	%				
Agriculture														
1986	6	0.6	1	0.1	8	0.9	6	0.6	21	2.2	911	97.8	932	100.0
1987	6	0.8	1	0.1	5	0.6	2	0.3	14	1.8	760	98.2	774	100.0
1988	9	1.2	0	0.0	6	0.8	4	0.5	19	2.5	728	97.5	747	100.0
1989	10	1.4	1	0.1	7	1.0	3	0.5	21	3.0	677	97.0	698	100.0
1990	23	3.1	1	0.1	9	1.2	5	0.7	38	5.1	713	94.9	751	100.0
Architecture/Land. Arch.^b														
1986					Not Available									
1987					Not Available									
1988					Not Available									
1989	3	1.0	0	0.0	7	2.5	2	0.7	12	4.2	276	95.8	288	100.0
1990	3	1.2	0	0.0	7	2.7	2	0.8	12	4.7	241	95.3	253	100.0
Biological Sciences														
1986	6	1.8	1	0.3	20	6.0	3	0.9	30	9.0	302	91.0	332	100.0
1987	9	2.7	0	0.0	13	3.9	3	0.9	25	7.5	305	92.5	330	100.0
1988	5	1.6	3	0.9	11	3.5	6	1.9	25	7.9	290	92.1	315	100.0
1989	3	1.0	1	0.3	14	4.5	5	1.5	23	7.3	290	92.7	313	100.0
1990	4	1.2	0	0.0	18	5.6	5	1.6	27	8.4	296	91.6	323	100.0
Education														
1986	33	1.4	9	0.4	22	0.9	10	0.4	74	3.1	2279	96.9	2353	100.0
1987	26	1.2	2	0.1	14	0.7	11	0.5	53	2.5	2044	97.5	2097	100.0
1988	24	1.3	6	0.3	14	0.7	10	0.5	54	2.8	1874	97.2	1928	100.0
1989	16	1.0	8	0.5	20	1.2	9	0.5	53	3.2	1621	96.8	1674	100.0
1990	26	1.4	17	0.9	19	1.0	5	0.3	67	3.6	1779	96.4	1846	100.0
General College														
1986	209	7.0	59	2.0	205	6.8	54	1.8	527	17.6	2461	82.4	2988	100.0
1987	189	7.0	63	2.3	186	6.9	61	2.3	499	18.5	2201	81.5	2700	100.0
1988	216	8.5	67	2.7	184	7.3	69	2.7	536	21.2	1999	78.8	2535	100.0
1989	198	8.8	72	3.3	172	7.6	59	2.6	501	22.3	1750	77.7	2251	100.0
1990	242	11.4	81	3.8	180	8.5	73	3.5	576	27.2	1545	72.8	2121	100.0
Graduate														
1986	65	0.8	33	0.4	120	1.5	49	0.6	267	3.3	7705	96.7	7972	100.0
1987	84	1.0	35	0.4	139	1.7	66	0.8	324	3.9	7951	96.1	8275	100.0
1988	82	1.0	30	0.4	124	1.5	63	0.8	299	3.7	7865	96.3	8164	100.0
1989	95	1.2	20	0.2	137	1.7	64	0.8	316	3.9	7794	96.1	8110	100.0
1990	112	1.3	21	0.2	138	1.7	64	0.8	335	4.0	7965	96.0	8300	100.0
Health Sciences														
Dental Hygiene														
1986	0	0.0	0	0.0	2	4.0	0	0.0	2	4.1	47	95.9	49	100.0
1987	1	2.3	1	2.3	0	0.0	1	2.1	3	6.3	45	93.7	48	100.0
1988	1	2.0	1	2.0	3	5.8	1	2.0	6	11.8	45	88.2	51	100.0
1989	0	0.0	0	0.0	5	9.1	1	1.8	6	10.9	49	89.1	55	100.0
1990	1	2.1	0	0.0	4	8.3	1	2.1	6	12.5	42	87.5	48	100.0

(continued on next page)

TABLE 1B: MINORITY ENROLLMENT^a, BY GROUP AND COLLEGE, TWIN CITIES CAMPUS, FALL QUARTERS 1986 THROUGH 1990

College		Minority Group								Total Minority Students	ALL Other Students		TOTAL ALL STUDENTS		
		Black Non- Hispanic		American Indian or Alaskan		Asian or Pacific Islander		Hispanic			N	%	N	%	
		N	%	N	%	N	%	N	%						
Dentistry	1986	1	0.2	0	0.0	11	2.6	1	0.2	13	3.0	408	97.0	421	100.0
	1987	3	0.7	1	0.2	15	3.7	2	0.5	21	5.1	387	94.9	408	100.0
	1988	1	0.3	2	0.5	16	4.2	2	0.5	21	5.5	360	94.5	381	100.0
	1989	0	0.0	1	0.4	13	3.7	6	1.7	20	5.8	327	94.2	347	100.0
	1990	1	0.3	1	0.3	15	4.6	6	1.9	23	7.1	303	92.9	326	100.0
Medical School	1986	18	0.9	7	0.4	50	2.6	29	1.5	104	5.4	1830	94.6	1934	100.0
	1987	16	0.8	9	0.5	54	2.8	20	1.1	99	5.2	1813	94.8	1912	100.0
	1988	23	1.2	8	0.4	98	5.0	28	1.4	157	8.0	1806	92.0	1963	100.0
	1989	24	1.2	8	0.4	96	5.0	25	1.3	153	7.9	1775	92.1	1928	100.0
	1990	21	1.1	8	0.4	108	5.5	26	1.3	163	8.3	1796	91.7	1959	100.0
Medical Technology	1986	0	0.0	1	1.9	1	1.9	0	0.0	2	3.8	51	96.2	53	100.0
	1987	0	0.0	0	0.0	4	7.7	0	0.0	4	7.7	48	92.3	52	100.0
	1988	2	3.5	0	0.0	7	12.3	0	0.0	9	15.8	48	84.2	57	100.0
	1989	2	2.4	0	0.0	7	8.6	1	1.2	10	12.2	72	87.8	82	100.0
	1990	1	1.4	1	1.4	6	8.2	1	1.3	9	12.3	64	87.7	73	100.0
Mortuary Science	1986	0	0.0	1	1.6	0	0.0	0	0.0	1	1.6	63	98.4	64	100.0
	1987	0	0.0	0	0.0	0	0.0	0	0.0	0	0.0	50	100.0	50	100.0
	1988	1	2.0	1	2.0	0	0.0	2	3.9	4	7.9	47	92.1	51	100.0
	1989	0	0.0	1	1.7	0	0.0	0	0.0	1	1.7	59	98.3	60	100.0
	1990	0	0.0	0	0.0	0	0.0	1	1.5	1	1.5	67	98.5	68	100.0
Nursing	1986	1	0.3	1	0.3	5	1.5	2	0.6	9	2.7	323	97.3	332	100.0
	1987	3	1.0	0	0.0	3	1.0	2	0.6	8	2.6	301	97.4	309	100.0
	1988	2	1.0	0	0.0	2	1.1	2	1.0	6	3.1	187	96.9	193	100.0
	1989	1	0.5	0	0.0	4	2.1	0	0.0	5	2.6	185	97.4	190	100.0
	1990	1	0.5	0	0.0	2	1.1	0	0.0	3	1.6	179	98.4	182	100.0
Occupational Therapy	1986	0	0.0	0	0.0	1	1.4	0	0.0	1	1.4	68	98.6	69	100.0
	1987	0	0.0	0	0.0	1	1.3	0	0.0	1	1.3	75	98.7	76	100.0
	1988	0	0.0	1	1.3	1	1.3	0	0.0	2	2.6	77	97.4	79	100.0
	1989	0	0.0	0	0.0	1	1.3	0	0.0	1	1.3	75	98.7	76	100.0
	1990	0	0.0	0	0.0	1	1.5	0	0.0	1	1.5	67	98.5	68	100.0
Pharmacy	1986	2	0.6	0	0.0	12	3.8	1	0.3	15	4.7	306	95.3	321	100.0
	1987	1	0.3	0	0.0	13	4.0	1	0.3	15	4.6	314	95.4	329	100.0
	1988	2	0.6	0	0.0	16	4.9	1	0.3	19	5.8	307	94.2	326	100.0
	1989	4	1.2	1	0.3	14	4.0	2	0.6	21	6.1	322	93.9	343	100.0
	1990	4	1.2	1	0.3	15	4.3	2	0.6	22	6.4	321	93.6	343	100.0

(continued on next page)

TABLE 1B: MINORITY ENROLLMENT^a, BY GROUP AND COLLEGE, TWIN CITIES CAMPUS, FALL QUARTERS 1986 THROUGH 1990

College	Minority Group								Total Minority Students	ALL Other Students		TOTAL ALL STUDENTS		
	Black Non- Hispanic		American Indian or Alaskan		Asian or Pacific Islander		Hispanic			N	%	N	%	
	N	%	N	%	N	%	N	%						
Physical Therapy														
1986	0	0.0	0	0.0	0	0.0	0	0.0	0	0.0	63	100.0	63	100.0
1987	0	0.0	0	0.0	0	0.0	0	0.0	0	0.0	59	100.0	59	100.0
1988	1	1.6	0	0.0	0	0.0	0	0.0	1	1.6	60	98.4	61	100.0
1989	0	0.0	0	0.0	1	1.6	0	0.0	1	1.6	60	98.4	61	100.0
1990	0	0.0	0	0.0	2	3.3	0	0.0	2	3.3	58	96.7	60	100.0
Public Health														
1986	3	1.2	2	0.8	5	1.9	1	0.4	11	4.3	246	95.7	257	100.0
1987	3	1.3	2	0.9	1	0.4	2	0.9	8	3.5	223	96.5	231	100.0
1988	3	1.2	1	0.4	5	2.1	3	1.2	12	4.9	233	95.1	245	100.0
1989	3	1.1	0	0.0	4	1.5	2	0.7	9	3.3	266	96.7	275	100.0
1990	2	0.8	0	0.0	4	1.5	3	1.1	9	3.4	255	96.6	264	100.0
Veterinary Medicine														
1986	1	0.4	2	0.7	3	1.0	3	1.0	9	3.1	285	96.9	294	100.0
1987	2	0.7	1	0.4	2	0.7	2	0.7	7	2.5	278	97.5	285	100.0
1988	2	0.7	1	0.4	4	1.4	3	1.1	10	3.6	266	96.4	276	100.0
1989	1	0.4	1	0.4	3	1.1	4	1.6	9	3.5	247	96.5	256	100.0
1990	1	0.4	1	0.4	3	1.2	4	1.6	9	3.6	244	96.4	253	100.0
SUBTOTAL Hlth. Sci.														
1986	26	0.7	14	0.4	90	2.3	37	0.9	167	4.3	3690	95.7	3857	100.0
1987	29	0.8	14	0.4	93	2.4	30	0.8	166	4.4	3593	95.6	3759	100.0
1988	38	1.0	15	0.4	152	4.1	42	1.2	247	6.7	3436	93.3	3683	100.0
1989	35	1.0	12	0.3	148	4.0	41	1.1	236	6.4	3437	93.6	3673	100.0
1990	32	0.9	12	0.3	160	4.4	44	1.2	248	6.8	3396	93.2	3644	100.0
Human Ecology														
1986	29	2.2	4	0.3	45	3.4	3	0.2	81	6.1	1239	93.9	1320	100.0
1987	35	2.6	5	0.4	50	3.8	1	0.1	91	6.9	1231	93.1	1322	100.0
1988	30	2.5	6	0.5	48	4.0	8	0.6	92	7.6	1118	92.4	1210	100.0
1989	27	2.4	6	0.5	49	4.4	6	0.5	88	7.8	1041	92.2	1129	100.0
1990	30	2.7	8	0.7	33	3.0	17	1.6	88	8.0	1011	92.0	1099	100.0
Law School														
1986	15	1.9	10	1.3	10	1.3	20	2.6	55	7.1	725	92.9	780	100.0
1987	20	2.6	6	0.8	15	1.9	15	1.9	56	7.2	715	92.8	771	100.0
1988	21	2.8	7	0.9	31	4.1	17	2.2	76	10.0	687	90.0	763	100.0
1989	31	3.9	8	1.0	37	4.6	22	2.8	98	12.3	698	87.7	796	100.0
1990	39	5.0	8	1.0	42	5.3	17	2.2	106	13.5	682	86.5	788	100.0
Liberal Arts														
1986	287	1.7	83	0.5	585	3.5	166	1.0	1121	6.7	15708	93.3	16829	100.0
1987	303	1.8	101	0.6	647	3.8	180	1.0	1231	7.2	15851	92.8	17082	100.0
1988	317	1.9	94	0.6	655	4.0	202	1.2	1268	7.7	15242	92.3	16510	100.0
1989	321	2.0	84	0.5	644	4.0	197	1.3	1246	7.8	14689	92.2	15935	100.0
1990	332	2.1	105	0.7	696	4.4	203	1.3	1336	8.5	14369	91.5	15705	100.0

(continued on next page)

TABLE 1B: MINORITY ENROLLMENT^a, BY GROUP AND COLLEGE, TWIN CITIES CAMPUS, FALL QUARTERS 1986 THROUGH 1990

College		Minority Group								Total Minority Students	ALL Other Students		TOTAL ALL STUDENTS		
		Black Non- Hispanic		American Indian or Alaskan		Asian or Pacific Islander		Hispanic			N	%	N	%	
		N	%	N	%	N	%	N	%						
Management															
	1986	25	1.6	4	0.3	42	2.7	9	0.6	80	5.2	1456	94.8	1536	100.0
	1987	20	1.5	2	0.1	43	3.1	16	1.2	81	5.9	1303	94.1	1384	100.0
	1988	20	1.8	3	0.3	47	4.2	14	1.3	84	7.6	1017	92.4	1101	100.0
	1989	18	1.9	7	0.6	47	5.0	11	1.2	83	8.7	866	91.3	949	100.0
	1990	13	1.3	6	0.6	51	5.3	16	1.7	86	8.9	878	91.1	964	100.0
Natural Resources															
	1986	1	0.3	2	0.6	1	0.3	1	0.3	5	1.5	309	98.5	314	100.0
	1987	0	0.0	2	0.7	0	0.0	0	0.0	2	0.7	282	99.3	284	100.0
	1988	1	0.3	0	0.0	1	0.3	1	0.3	3	1.0	286	99.0	289	100.0
	1989	1	0.3	3	0.9	3	0.9	1	0.3	8	2.4	328	97.6	336	100.0
	1990	3	0.7	5	1.2	4	0.9	1	0.2	13	3.0	424	97.0	437	100.0
Technology															
	1986	66	1.2	18	0.3	429	7.6	43	0.7	556	9.8	5112	90.2	5668	100.0
	1987	76	1.4	20	0.4	430	8.0	32	0.6	558	10.4	4821	89.6	5379	100.0
	1988	85	1.7	18	0.4	435	8.4	38	0.7	576	11.2	4574	88.8	5150	100.0
	1989	63	1.3	12	0.3	431	9.1	36	0.8	542	11.5	4176	88.5	4718	100.0
	1990	53	1.2	10	0.2	423	9.2	39	0.8	525	11.4	4089	88.6	4614	100.0
University College															
	1986	8	6.4	0	0.0	1	0.8	0	0.0	9	7.2	116	92.8	125	100.0
	1987	14	10.3	2	1.5	3	2.2	2	1.5	21	15.5	115	84.5	136	100.0
	1988	9	5.1	2	1.2	3	1.7	3	1.7	17	9.7	159	90.3	176	100.0
	1989	7	4.8	2	1.4	0	0.0	4	2.7	13	8.9	133	91.1	146	100.0
	1990	12	9.4	0	0.0	0	0.0	1	0.8	13	10.2	114	89.8	127	100.0

^a See footnote at end of Table 1A.^b See Notes on page 1.

TABLE 1C: MINORITY ENROLLMENT^a, BY GROUP AND COLLEGE, DULUTH CAMPUS, FALL QUARTERS 1986 THROUGH 1990

College	Minority Group								Total Minority Students	ALL Other Students		TOTAL ALL STUDENTS		
	Black Non- Hispanic		American Indian or Alaskan		Asian or Pacific Islander		Hispanic			N	%	N	%	
	N	%	N	%	N	%	N	%						
Business & Economics														
1986	6	0.4	6	0.4	5	0.3	6	0.4	23	1.5	1520	98.5	1543	100.0
1987	6	0.4	5	0.3	4	0.3	5	0.3	20	1.3	1511	98.7	1531	100.0
1988	8	0.5	9	0.6	7	0.5	2	0.1	26	1.7	1468	98.3	1494	100.0
1989	8	0.5	8	0.5	16	1.0	3	0.3	35	2.3	1503	97.7	1538	100.0
1990	6	0.4	9	0.6	14	0.9	7	0.5	36	2.4	1485	97.6	1521	100.0
Educ. & Human Serv.														
1986	5	0.4	24	1.7	6	0.4	3	0.2	38	2.7	1393	97.3	1431	100.0
1987	7	0.5	21	1.4	6	0.4	3	0.2	37	2.5	1420	97.5	1457	100.0
1988	9	0.7	14	1.0	6	0.4	4	0.3	33	2.4	1365	97.6	1398	100.0
1989	10	0.7	10	0.7	8	0.5	6	0.4	34	2.3	1440	97.7	1474	100.0
1990	12	0.9	9	0.7	6	0.4	6	0.4	33	2.4	1317	97.6	1350	100.0
Fine Arts														
1986	2	0.7	5	1.6	2	0.7	1	0.3	10	3.3	297	96.7	307	100.0
1987	0	0.0	3	1.1	5	1.8	1	0.3	9	3.2	273	96.8	282	100.0
1988	2	0.7	4	1.3	3	1.0	1	0.3	10	3.3	289	96.7	299	100.0
1989	2	0.6	7	2.3	5	1.6	2	0.6	16	5.1	297	94.9	313	100.0
1990	1	0.3	6	1.7	3	0.9	1	0.3	11	3.2	337	96.8	348	100.0
Graduate														
1986	0	0.0	1	0.6	1	0.5	1	0.5	3	1.6	179	98.4	182	100.0
1987	1	0.4	3	1.3	0	0.0	1	0.4	5	2.1	226	97.9	231	100.0
1988	1	0.4	5	1.8	0	0.0	1	0.4	7	2.6	260	97.4	267	100.0
1989	0	0.0	5	1.9	0	0.0	1	0.4	6	2.3	253	97.7	259	100.0
1990	1	0.4	5	2.0	0	0.0	0	0.0	6	2.4	244	97.6	250	100.0
Liberal Arts														
1986	11	0.5	29	1.3	7	0.3	9	0.4	56	2.5	2146	97.5	2202	100.0
1987	20	0.9	26	1.2	11	0.5	5	0.2	62	2.8	2131	97.2	2193	100.0
1988	19	0.8	35	1.5	13	0.5	6	0.2	73	3.0	2348	97.0	2421	100.0
1989	19	0.8	38	1.5	32	1.3	8	0.3	97	3.9	2420	96.1	2517	100.0
1990	17	0.7	30	1.2	30	1.2	14	0.5	91	3.6	2360	96.4	2451	100.0
Medicine														
1986	0	0.0	2	2.2	2	2.2	0	0.0	4	4.4	88	95.6	92	100.0
1987	0	0.0	2	2.2	1	1.1	1	1.1	4	4.4	88	95.6	92	100.0
1988	1	1.1	1	1.1	0	0.0	1	1.1	3	3.4	84	96.6	87	100.0
1989	0	0.0	0	0.0	2	2.1	0	0.0	2	2.1	92	97.9	94	100.0
1990	0	0.0	2	2.0	2	2.0	0	0.0	4	4.0	95	96.0	99	100.0
Science & Engineering														
1986	4	0.2	15	1.0	20	1.3	4	0.3	43	2.8	1501	97.2	1544	100.0
1987	7	0.4	16	1.0	28	1.8	5	0.3	56	3.5	1523	96.5	1579	100.0
1988	13	0.8	12	0.8	26	1.6	12	0.8	63	4.0	1506	96.0	1569	100.0
1989	15	0.9	16	1.0	32	2.0	10	0.6	73	4.5	1552	95.5	1625	100.0
1990	12	0.6	19	1.0	35	1.9	8	0.4	74	3.9	1830	96.1	1904	100.0

^a See footnote at end of Table 1A.

TABLE 2: MINORITY ENROLLMENT^a, BY GROUP, SEX, AND CAMPUS/COLLEGE, FALL QUARTERS 1986 THROUGH 1990

Campus/College		Minority Group								Total Minority Students	ALL Other Students		TOTAL ALL STUDENTS			
		Black Non- Hispanic		American Indian or Alaskan		Asian or Pacific Islander		Hispanic			M	F	M	F		
		M	F	M	F	M	F	M	F							
Crookston																
	1986	N	0	0	3	2	0	1	9	7	12	10	586	605	598	615
		Z	(0.0)	(0.0)	(0.5)	(0.2)	(0.0)	(0.2)	(1.5)	(1.1)	(2.0)	(1.6)	(98.0)	(98.4)	(100.0)	(100.0)
	1987	N	0	0	4	1	1	0	4	7	9	8	532	587	541	595
		Z	(0.0)	(0.0)	(0.7)	(0.2)	(0.2)	(0.0)	(0.7)	(1.2)	(1.6)	(1.4)	(98.4)	(98.6)	(100.0)	(100.0)
	1988	N	1	2	2	4	0	2	5	7	8	15	495	703	503	718
		Z	(0.2)	(0.3)	(0.4)	(0.5)	(0.0)	(0.3)	(1.0)	(1.0)	(1.6)	(2.1)	(98.4)	(97.9)	(100.0)	(100.0)
	1989	N	2	2	2	1	0	2	5	12	9	17	538	724	547	741
		Z	(0.4)	(0.3)	(0.4)	(0.2)	(0.0)	(0.3)	(0.9)	(1.6)	(1.7)	(2.3)	(98.3)	(97.7)	(100.0)	(100.0)
	1990	N	6	2	5	6	0	1	8	13	19	22	525	770	544	792
		Z	(1.1)	(0.3)	(0.9)	(0.8)	(0.0)	(0.1)	(1.5)	(1.6)	(3.5)	(2.8)	(96.5)	(97.2)	(100.0)	(100.0)
Duluth																
Business & Economics																
	1986		4	2	5	1	4	1	4	2	17	6	875	645	892	651
	1987		4	2	4	1	3	1	3	2	14	6	903	608	917	614
	1988		5	3	5	4	3	4	0	2	13	13	897	571	910	584
	1989		4	4	4	4	7	9	2	1	17	18	930	573	947	591
	1990		5	1	4	5	2	12	4	3	15	21	896	589	911	610
Educ. & Human Serv.																
	1986		3	2	10	14	3	3	1	2	17	21	507	894	524	915
	1987		4	3	12	9	3	3	1	2	20	17	503	917	523	934
	1988		7	2	10	4	2	4	1	3	20	13	488	877	508	890
	1989		7	3	5	5	1	7	4	2	17	17	485	955	502	972
	1990		9	3	2	7	3	3	1	5	15	18	461	856	476	874
Fine Arts																
	1986		2	0	2	3	2	0	0	1	6	4	131	166	137	170
	1987		0	0	2	1	3	2	0	1	5	4	130	143	135	147
	1988		2	0	3	1	2	1	0	1	7	3	120	169	127	172
	1989		1	1	2	5	2	3	1	1	6	10	122	175	128	185
	1990		0	1	1	5	1	2	0	1	2	9	130	207	132	216
Graduate																
	1986		0	0	0	1	0	1	0	1	0	3	92	87	92	90
	1987		1	0	1	2	0	0	0	1	2	3	117	109	119	112
	1988		1	0	2	3	0	0	0	1	3	4	123	137	126	141
	1989		0	0	1	4	0	0	0	1	1	5	103	150	104	155
	1990		1	0	2	3	0	0	0	0	3	3	113	131	116	134

(continued on next page)

TABLE 2: MINORITY ENROLLMENT^a, BY GROUP, SEX, AND CAMPUS/COLLEGE, FALL QUARTERS 1987 THROUGH 1990

Campus/College	Minority Group								Total Minority Students		ALL Other Students		TOTAL ALL STUDENTS		
	Black Non-Hispanic		American Indian or Alaskan		Asian or Pacific Islander		Hispanic		M	F	M	F	M	F	
	M	F	M	F	M	F	M	F							
Liberal Arts															
1986	7	4	9	20	4	3	2	7	22	34	1081	1065	1103	1099	
1987	10	10	9	17	6	5	0	5	25	37	1007	1124	1032	1161	
1988	7	12	10	25	7	6	3	3	27	46	1049	1299	1076	1345	
1989	7	12	13	25	13	19	6	2	39	58	1099	1321	1138	1379	
1990	6	11	12	18	10	20	9	5	37	54	1064	1296	1101	1350	
Medicine															
1986	0	0	2	0	0	2	0	0	2	2	57	31	59	33	
1987	0	0	2	0	0	1	1	0	3	1	59	29	62	30	
1988	0	1	1	0	0	0	1	0	2	1	44	40	46	41	
1989	0	0	0	0	1	1	0	0	1	1	44	48	45	49	
1990	0	0	1	1	1	1	0	0	2	2	53	42	55	44	
Science & Engineering															
1986	4	0	6	9	16	4	2	2	28	15	1058	435	1086	450	
1987	5	2	6	10	22	6	3	2	36	20	1096	427	1132	447	
1988	9	4	7	5	20	6	9	3	45	18	1110	396	1155	414	
1989	11	4	7	9	25	7	5	5	48	25	1148	404	1196	429	
1990	11	1	6	13	25	10	4	4	46	28	1320	510	1366	538	
TOTAL Duluth															
1986	N	20	8	34	48	29	14	9	15	92	85	3801	3323	3893	3408
	Z	(0.5)	(0.2)	(0.9)	(1.4)	(0.8)	(0.4)	(0.2)	(0.5)	(2.4)	(2.5)	(97.6)	(97.5)	(100.0)	(100.0)
1987	N	24	17	36	40	37	18	8	13	105	88	3815	3357	3920	3445
	Z	(0.6)	(0.5)	(0.9)	(1.2)	(1.0)	(0.5)	(0.2)	(0.4)	(2.7)	(2.6)	(97.3)	(97.4)	(100.0)	(100.0)
1988	N	31	22	38	42	34	21	14	13	117	98	3831	3489	3948	3587
	Z	(0.8)	(0.6)	(1.0)	(1.2)	(0.9)	(0.6)	(0.3)	(0.3)	(3.0)	(2.7)	(97.0)	(97.3)	(100.0)	(100.0)
1989	N	30	24	32	52	49	46	18	12	129	134	3931	3626	4060	3760
	Z	(0.7)	(0.6)	(0.8)	(1.4)	(1.2)	(1.2)	(0.5)	(0.3)	(3.2)	(3.6)	(96.8)	(96.4)	(100.0)	(100.0)
1990	N	32	17	28	52	42	48	18	18	120	135	4037	3631	4157	3766
	Z	(0.8)	(0.4)	(0.7)	(1.4)	(1.0)	(1.3)	(0.4)	(0.5)	(2.9)	(3.6)	(97.1)	(96.4)	(100.0)	(100.0)
Morris															
1986	N	26	44	6	18	19	7	19	12	70	81	785	838	855	919
	Z	(3.1)	(4.8)	(0.7)	(1.9)	(2.2)	(0.8)	(2.2)	(1.3)	(8.2)	(8.8)	(91.8)	(91.2)	(100.0)	(100.0)
1987	N	21	38	15	20	20	6	17	8	73	72	838	984	911	1056
	Z	(2.3)	(3.6)	(1.6)	(1.9)	(2.2)	(0.6)	(1.9)	(0.7)	(8.0)	(6.8)	(92.0)	(93.2)	(100.0)	(100.0)
1988	N	15	26	15	24	21	12	11	7	62	69	848	1042	910	1111
	Z	(1.7)	(2.3)	(1.6)	(2.2)	(2.3)	(1.1)	(1.2)	(0.6)	(6.8)	(6.2)	(93.2)	(93.8)	(100.0)	(100.0)
1989	N	16	21	21	22	24	19	10	10	71	72	855	1043	926	1115
	Z	(1.7)	(1.9)	(2.3)	(2.0)	(2.6)	(1.7)	(1.1)	(0.9)	(7.7)	(6.5)	(92.3)	(93.5)	(100.0)	(100.0)
1990	N	16	21	16	19	29	24	9	11	70	75	828	1048	898	1123
	Z	(1.8)	(1.9)	(1.8)	(1.7)	(3.2)	(2.1)	(1.0)	(1.0)	(7.8)	(6.7)	(92.2)	(93.3)	(100.0)	(100.0)

(continued on next page)

TABLE 2: MINORITY ENROLLMENT^a, BY GROUP, SEX, AND CAMPUS/COLLEGE, FALL QUARTERS 1986 THROUGH 1990

Campus/College	Minority Group										Total Minority Students	ALL Other Students		TOTAL ALL STUDENTS	
	Black Non- Hispanic		American Indian or Alaskan		Asian or Pacific Islander		Hispanic		M	F		M	F	M	F
	M	F	M	F	M	F	M	F							
Twin Cities															
Agriculture															
1986	4	2	1	0	4	4	2	4	11	10	567	344	578	354	
1987	6	0	1	0	5	0	0	2	12	2	481	279	493	281	
1988	5	4	0	0	5	1	2	2	12	7	470	258	482	265	
1989	6	4	0	1	6	1	1	2	13	8	401	276	414	284	
1990	11	12	0	1	4	5	4	1	19	19	426	287	445	306	
Architecture/Land. Arch.^b															
1986															
1987															
1988															
1989	3	0	0	0	5	2	1	1	9	3	190	86	199	89	
1990	3	0	0	0	5	2	1	1	9	3	167	74	176	77	
Biological Science															
1986	4	2	0	1	9	11	0	3	13	17	167	135	180	152	
1987	5	4	0	0	8	5	1	2	14	11	172	133	186	144	
1988	2	3	1	2	5	6	2	4	10	15	161	129	171	144	
1989	1	2	0	1	5	9	1	4	7	16	146	144	153	160	
1990	2	2	0	0	9	9	1	4	12	15	150	146	162	161	
Education															
1986	14	19	4	5	7	15	4	6	29	45	745	1534	774	1579	
1987	7	19	1	1	3	11	3	8	14	39	624	1420	638	1459	
1988	12	12	2	4	3	11	5	5	22	32	569	1305	591	1337	
1989	8	8	2	6	7	13	1	8	18	35	437	1184	455	1219	
1990	13	13	7	10	8	11	2	3	30	37	541	1238	571	1275	
General College															
1986	110	99	26	33	135	70	28	26	299	228	1467	994	1766	1222	
1987	96	93	28	35	127	59	34	27	285	214	1266	935	1551	1149	
1988	100	116	29	38	117	67	41	28	287	249	1100	899	1387	1148	
1989	92	106	26	46	100	72	30	29	248	253	896	854	1144	1107	
1990	111	131	31	50	98	82	36	37	276	300	809	736	1085	1036	
Graduate School															
1986	31	34	15	18	76	44	24	25	146	121	4420	3285	4566	3406	
1987	46	38	13	22	85	54	32	34	176	148	4593	3358	4769	3506	
1988	46	36	14	16	82	42	37	26	179	120	4515	3350	4694	3470	
1989	48	47	9	11	91	46	35	29	183	133	4477	3317	4660	3450	
1990	53	59	8	13	83	55	34	30	178	157	4585	3380	4763	3537	

(continued on next page)

TABLE 2: MINORITY ENROLLMENT^a, BY GROUP, SEX, AND CAMPUS/COLLEGE, FALL QUARTERS 1986 THROUGH 1990

Campus/College	Minority Group										Total Minority Students	ALL Other Students		TOTAL ALL STUDENTS	
	Black Non- Hispanic		American Indian or Alaskan		Asian or Pacific Islander		Hispanic		M	F		M	F	M	F
	M	F	M	F	M	F	M	F							
Health Sciences															
Dental Hygiene															
1986	0	0	0	0	0	2	0	0	0	2	0	47	0	49	
1987	0	1	0	1	0	0	0	1	0	3	1	44	1	47	
1988	0	1	0	1	1	2	0	1	1	5	1	44	2	49	
1989	0	0	0	0	1	4	0	1	1	5	0	49	1	54	
1990	0	1	0	0	0	4	0	1	0	6	0	42	0	48	
Dentistry															
1986	0	1	0	0	5	6	0	1	5	8	298	110	303	118	
1987	1	2	1	0	8	7	2	0	12	9	273	114	285	123	
1988	0	1	2	0	8	8	2	0	12	9	258	102	270	111	
1989	0	0	1	0	8	5	4	2	13	7	231	96	244	103	
1990	0	1	1	0	7	8	4	2	12	11	195	108	207	119	
Medical School															
1986	13	5	3	4	33	17	21	8	70	34	1113	717	1183	751	
1987	11	5	3	6	37	17	14	6	65	34	1150	663	1215	697	
1988	16	7	3	5	63	35	15	13	97	60	1168	638	1265	698	
1989	17	7	4	4	65	31	14	11	100	53	1112	663	1212	716	
1990	14	7	3	5	79	29	17	9	113	50	1119	677	1232	727	
Medical Technology															
1986	0	0	0	1	0	1	0	0	0	2	10	41	10	43	
1987	0	0	0	0	1	3	0	0	1	3	9	39	10	42	
1988	2	0	0	0	3	4	0	0	5	4	13	35	18	39	
1989	2	0	0	0	3	4	0	1	5	5	17	55	22	60	
1990	1	0	1	0	3	3	0	1	5	4	14	50	19	54	
Mortuary Science															
1986	0	0	1	0	0	0	0	0	1	0	52	11	53	11	
1987	0	0	0	0	0	0	0	0	0	0	35	15	35	15	
1988	0	1	1	0	0	0	0	2	1	3	36	11	37	14	
1989	0	0	1	0	0	0	0	0	1	0	42	17	43	17	
1990	0	0	0	0	0	0	0	1	0	1	54	13	54	14	
Nursing															
1986	0	1	0	1	2	3	0	2	2	7	34	289	36	296	
1987	0	3	0	0	0	3	0	2	0	8	24	277	24	285	
1988	0	2	0	0	1	1	0	2	1	5	14	173	15	178	
1989	0	1	0	0	0	4	0	0	0	5	17	168	17	173	
1990	0	1	0	0	0	2	0	0	0	3	19	160	19	163	
Occupational Therapy															
1986	0	0	0	0	0	1	0	0	0	1	4	64	4	65	
1987	0	0	0	0	0	1	0	0	0	1	5	70	5	71	
1988	0	0	0	1	0	1	0	0	0	2	8	69	8	71	
1989	0	0	0	0	0	1	0	0	0	1	7	68	7	69	
1990	0	0	0	0	0	1	0	0	0	1	5	62	5	63	

(continued on next page)

TABLE 2: MINORITY ENROLLMENT^a, BY GROUP, SEX, AND CAMPUS/COLLEGE, FALL QUARTERS 1986 THROUGH 1990

Campus/College		Minority Group								Total Minority Students	ALL Other Students		TOTAL ALL STUDENTS		
		Black Non- Hispanic		American Indian or Alaskan		Asian or Pacific Islander		Hispanic			M	F	M	F	
		M	F	M	F	M	F	M	F						
Pharmacy	1986	2	0	0	0	5	7	1	0	8	7	128	178	136	185
	1987	0	1	0	0	3	10	0	1	3	12	125	189	128	201
	1988	1	1	0	0	5	11	0	1	6	13	112	195	118	208
	1989	2	2	1	0	4	10	0	2	7	14	121	201	128	215
	1990	2	2	1	0	5	10	0	2	8	14	109	212	117	226
Physical Therapy	1986	0	0	0	0	0	0	0	0	0	0	13	50	13	50
	1987	0	0	0	0	0	0	0	0	0	0	20	39	20	39
	1988	0	1	0	0	0	0	0	0	0	1	15	45	15	46
	1989	0	0	0	0	0	1	0	0	0	1	7	53	7	54
	1990	0	0	0	0	0	2	0	0	0	2	13	45	13	47
Public Health	1986	0	3	0	2	1	4	0	1	1	10	64	182	65	192
	1987	0	3	0	2	0	1	0	2	0	8	67	156	67	164
	1988	2	1	0	1	2	3	2	1	6	6	72	161	78	167
	1989	1	2	0	0	0	4	1	1	2	7	80	186	82	193
	1990	0	2	0	0	2	2	2	1	4	5	74	181	78	186
Veterinary Medicine	1986	0	1	1	1	1	2	2	1	4	5	145	140	149	145
	1987	0	2	1	0	0	2	1	1	2	5	134	144	136	149
	1988	0	2	1	0	0	4	1	2	2	8	122	144	124	152
	1989	0	1	0	1	0	3	1	3	1	8	97	150	98	158
	1990	0	1	0	1	1	2	1	3	2	7	86	158	88	165
SUBTOTAL Hlth Sci.	1986	15	11	5	9	47	43	24	13	91	76	1861	1829	1952	1905
	1987	12	17	5	9	49	44	17	13	83	83	1843	1750	1926	1833
	1988	21	17	7	8	83	69	20	22	131	116	1819	1617	1950	1733
	1989	22	13	7	5	81	67	20	21	130	106	1731	1706	1861	1812
	1990	17	15	6	6	97	63	24	20	144	104	1688	1708	1832	1812
Human Ecology	1986	13	16	0	4	7	38	1	2	21	60	110	1129	131	1189
	1987	15	20	0	5	8	42	0	1	23	68	130	1101	153	1169
	1988	9	21	1	5	6	42	1	7	17	75	121	997	138	1072
	1989	8	19	2	4	9	40	4	2	23	65	125	916	148	981
	1990	8	22	2	6	6	27	6	11	22	66	118	893	140	959
Law School	1986	8	7	5	5	8	2	16	4	37	18	414	311	451	329
	1987	12	8	2	4	12	3	12	3	38	18	419	296	457	314
	1988	14	7	3	4	18	13	12	5	47	29	393	294	440	323
	1989	18	13	1	7	21	16	13	9	53	45	387	311	440	356
	1990	25	14	0	8	24	18	11	6	60	46	378	304	438	350

(continued on next page)

TABLE 2: MINORITY ENROLLMENT^a, BY GROUP, SEX, AND CAMPUS/COLLEGE, FALL QUARTERS 1986 THROUGH 1990

Campus/College		Minority Group								Total Minority Students	ALL Other Students		TOTAL ALL STUDENTS			
		Black Non- Hispanic		American Indian or Alaskan		Asian or Pacific Islander		Hispanic			M	F	M	F		
		M	F	M	F	M	F	M	F							
Liberal Arts		1986	145	142	39	44	325	260	85	81	594	527	7530	8178	8124	8705
		1987	140	163	46	55	345	302	96	84	627	604	7618	8233	8245	8837
		1988	147	170	45	49	349	306	114	88	655	613	7209	8033	7864	8646
		1989	147	174	27	57	323	321	111	86	608	638	6850	7839	7458	8477
		1990	145	187	44	61	332	364	93	110	614	722	6616	7753	7230	8475
Management		1986	11	14	2	2	23	19	9	0	45	35	817	639	862	674
		1987	13	7	1	1	19	24	11	5	44	37	734	569	778	606
		1988	13	7	1	2	17	30	9	5	40	44	563	454	603	498
		1989	12	6	1	6	19	28	5	6	37	46	471	395	508	441
		1990	7	6	1	5	22	29	8	8	38	48	474	404	512	452
Natural Resources		1986	1	0	1	1	0	1	1	0	3	2	237	72	240	74
		1987	0	0	2	0	0	0	0	0	2	0	223	59	225	59
		1988	0	1	0	0	1	0	1	0	2	1	212	74	214	75
		1989	0	1	1	2	3	0	1	0	5	3	246	82	251	85
		1990	3	0	2	3	3	1	1	0	9	4	303	121	312	125
Technology		1986	48	18	14	4	326	103	33	10	421	135	4189	923	4610	1058
		1987	50	26	16	4	337	93	26	6	429	129	3974	847	4403	976
		1988	60	25	14	4	334	101	29	9	437	139	3750	824	4187	963
		1989	47	16	9	3	331	100	29	7	416	126	3420	756	3836	882
		1990	37	16	8	2	328	95	33	6	406	119	3341	748	3747	867
University College		1986	7	1	0	0	0	1	0	0	7	2	45	71	52	73
		1987	10	4	0	2	1	2	1	1	12	9	47	68	59	77
		1988	7	2	1	1	1	2	2	1	11	6	69	90	80	96
		1989	5	2	2	0	0	0	1	3	8	5	59	74	67	79
		1990	5	7	0	0	0	0	0	1	5	8	49	65	54	73
TOTAL Twin Cities		1986	N 411	365	112	126	967	611	227	174	1717	1276	22569	19444	24286	20720
			Z (1.7)	(1.8)	(0.5)	(0.6)	(4.0)	(3.0)	(0.9)	(0.8)	(7.1)	(6.2)	(92.9)	(93.8)	(100.0)	(100.0)
		1987	N 412	399	115	138	999	639	233	186	1759	1362	22124	19048	23883	20410
			Z (1.7)	(2.0)	(0.5)	(0.7)	(4.2)	(3.1)	(1.0)	(0.9)	(7.4)	(6.7)	(92.6)	(93.3)	(100.0)	(100.0)
		1988	N 436	421	118	133	1021	690	275	202	1850	1446	20951	18324	22801	19770
			Z (1.9)	(2.1)	(0.5)	(0.7)	(4.5)	(3.5)	(1.2)	(1.0)	(8.1)	(7.3)	(91.9)	(92.7)	(100.0)	(100.0)
		1989	N 417	411	87	149	1001	715	253	207	1758	1482	19836	17940	21594	19422
			Z (1.9)	(2.1)	(0.4)	(0.8)	(4.6)	(3.7)	(1.2)	(1.0)	(8.1)	(7.6)	(91.9)	(92.4)	(100.0)	(100.0)
		1990	N 440	484	109	165	1019	761	254	238	1822	1648	19645	17857	21467	19505
			Z (2.1)	(2.5)	(0.5)	(0.8)	(4.7)	(3.9)	(1.2)	(1.2)	(8.5)	(8.4)	(91.5)	(91.6)	(100.0)	(100.0)

(continued on next page)

TABLE 2: MINORITY ENROLLMENT^a, BY GROUP, SEX, AND CAMPUS/COLLEGE, FALL QUARTERS 1986 THROUGH 1990

Campus/College	Minority Group										ALL Other Students	TOTAL ALL STUDENTS			
	Black Non-Hispanic		American Indian or Alaskan		Asian or Pacific Islander		Hispanic		Total Minority Students			M	F	M	F
	M	F	M	F	M	F	M	F	M	F					
Waseca															
1986	N	<u>2</u>	<u>5</u>	<u>0</u>	<u>1</u>	<u>2</u>	<u>0</u>	<u>0</u>	<u>4</u>	<u>6</u>	<u>492</u>	<u>647</u>	<u>496</u>	<u>653</u>	
	%	(0.4)	(0.8)	(0.0)	(0.1)	(0.4)	(0.0)	(0.0)	(0.8)	(0.9)	(99.2)	(99.1)	(100.0)	(100.0)	
1987	N	<u>1</u>	<u>3</u>	<u>0</u>	<u>1</u>	<u>1</u>	<u>0</u>	<u>1</u>	<u>2</u>	<u>5</u>	<u>435</u>	<u>721</u>	<u>437</u>	<u>726</u>	
	%	(0.2)	(0.4)	(0.0)	(0.1)	(0.2)	(0.0)	(0.1)	(0.4)	(0.6)	(99.6)	(99.4)	(100.0)	(100.0)	
1988	N	<u>2</u>	<u>0</u>	<u>0</u>	<u>1</u>	<u>1</u>	<u>1</u>	<u>0</u>	<u>3</u>	<u>2</u>	<u>390</u>	<u>774</u>	<u>393</u>	<u>776</u>	
	%	(0.5)	(0.0)	(0.0)	(0.1)	(0.3)	(0.1)	(0.0)	(0.8)	(0.2)	(99.2)	(99.8)	(100.0)	(100.0)	
1989	N	<u>8</u>	<u>1</u>	<u>0</u>	<u>0</u>	<u>1</u>	<u>2</u>	<u>0</u>	<u>9</u>	<u>3</u>	<u>482</u>	<u>680</u>	<u>491</u>	<u>683</u>	
	%	(1.6)	(0.1)	(0.0)	(0.0)	(0.2)	(0.3)	(0.0)	(1.8)	(0.4)	(98.2)	(99.6)	(100.0)	(100.0)	
1990	N	<u>8</u>	<u>2</u>	<u>0</u>	<u>1</u>	<u>1</u>	<u>1</u>	<u>1</u>	<u>10</u>	<u>5</u>	<u>428</u>	<u>599</u>	<u>438</u>	<u>604</u>	
	%	(1.9)	(0.5)	(0.0)	(0.1)	(0.2)	(0.1)	(0.2)	(2.3)	(0.8)	(97.7)	(99.2)	(100.0)	(100.0)	
TOTAL ENROLLMENT															
1986	N	<u>459</u>	<u>422</u>	<u>155</u>	<u>195</u>	<u>1017</u>	<u>633</u>	<u>264</u>	<u>208</u>	<u>1895</u>	<u>1458</u>	<u>28233</u>	<u>24857</u>	<u>30128</u>	<u>26315</u>
	%	(1.5)	(1.6)	(0.5)	(0.7)	(3.4)	(2.4)	(0.9)	(0.8)	(6.3)	(5.5)	(93.7)	(94.5)	(100.0)	(100.0)
1987	N	<u>458</u>	<u>457</u>	<u>170</u>	<u>200</u>	<u>1058</u>	<u>663</u>	<u>262</u>	<u>215</u>	<u>1948</u>	<u>1535</u>	<u>27744</u>	<u>24697</u>	<u>29692</u>	<u>26232</u>
	%	(1.5)	(1.8)	(0.6)	(0.8)	(3.6)	(2.5)	(0.9)	(0.8)	(6.6)	(5.9)	(93.4)	(94.1)	(100.0)	(100.0)
1988	N	<u>485</u>	<u>471</u>	<u>173</u>	<u>204</u>	<u>1077</u>	<u>726</u>	<u>305</u>	<u>229</u>	<u>2040</u>	<u>1630</u>	<u>26515</u>	<u>24332</u>	<u>28555</u>	<u>25962</u>
	%	(1.7)	(1.8)	(0.6)	(0.8)	(3.8)	(2.8)	(1.1)	(0.9)	(7.2)	(6.3)	(92.8)	(93.7)	(100.0)	(100.0)
1989	N	<u>473</u>	<u>459</u>	<u>142</u>	<u>224</u>	<u>1075</u>	<u>784</u>	<u>286</u>	<u>241</u>	<u>1976</u>	<u>1708</u>	<u>25642</u>	<u>24013</u>	<u>27618</u>	<u>25721</u>
	%	(1.7)	(1.8)	(0.5)	(0.9)	(3.9)	(3.0)	(1.1)	(0.9)	(7.2)	(6.6)	(92.8)	(93.4)	(100.0)	(100.0)
1990	N	<u>502</u>	<u>526</u>	<u>158</u>	<u>243</u>	<u>1091</u>	<u>835</u>	<u>290</u>	<u>281</u>	<u>2041</u>	<u>1885</u>	<u>25463</u>	<u>23905</u>	<u>27504</u>	<u>25790</u>
	%	(1.8)	(2.0)	(0.6)	(1.0)	(4.0)	(3.2)	(1.0)	(1.1)	(7.4)	(7.3)	(92.6)	(92.7)	(100.0)	(100.0)

^a See footnote at end of Table 1A.^b See Notes on page 1.

Figure 2: New Minority Students By Group
University Of Minnesota
Fall Quarter, 1990

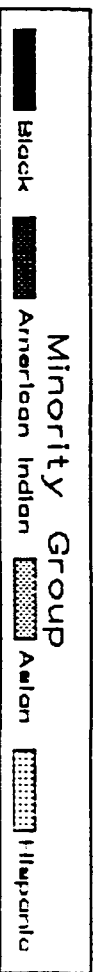
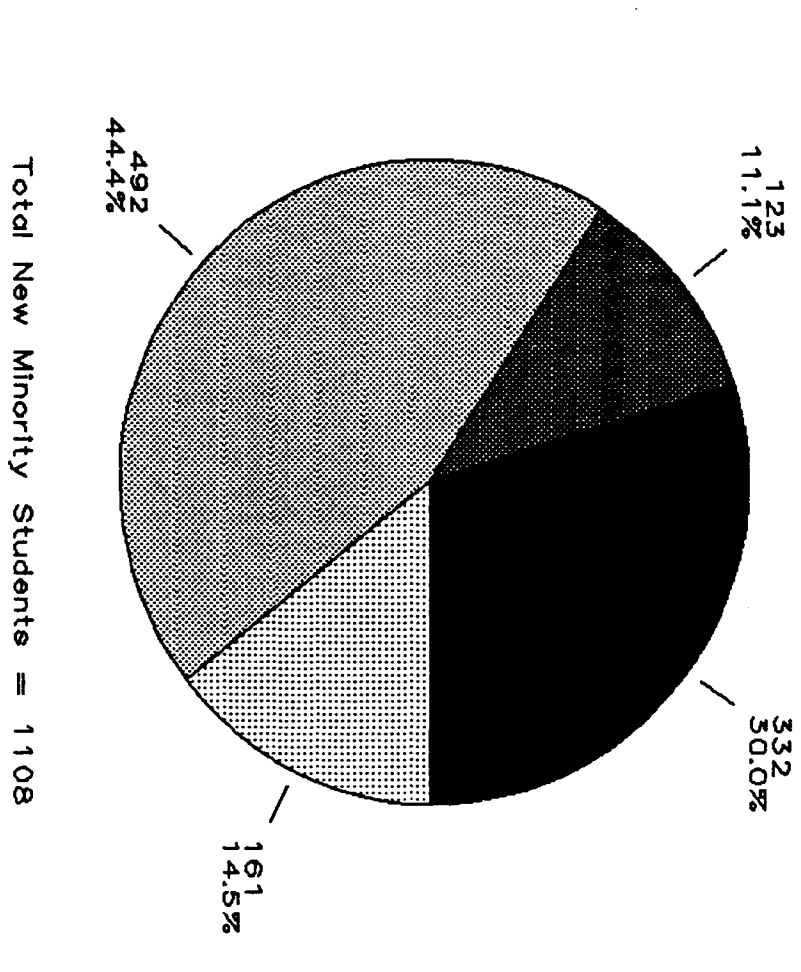


TABLE 3: MINORITY ENROLLMENT^a, BY GROUP, REGISTRATION STATUS (NEW vs. RETURNING)^b, AND CAMPUS/COLLEGE, FALL QUARTERS 1987 THROUGH 1990

Campus/College		Minority Group								Total Minority Students	ALL Other Students		TOTAL ALL STUDENTS		
		Black Non- Hispanic		American Indian or Alaskan		Asian or Pacific Islander		Hispanic			New	Return	New	Return	
		New	Return	New	Return	New	Return	New	Return						
Crookston															
1987	N	0	0	4	1	1	0	7	4	12	5	622	497	634	502
	Z	(0.0)	(0.0)	(0.6)	(0.2)	(0.2)	(0.0)	(1.1)	(0.8)	(1.9)	(1.0)	(98.1)	(99.0)	(100.0)	(100.0)
1988	N	2	1	3	3	2	0	5	7	12	11	607	591	619	602
	Z	(0.3)	(0.2)	(0.5)	(0.5)	(0.3)	(0.0)	(0.8)	(1.2)	(1.9)	(1.8)	(98.1)	(98.2)	(100.0)	(100.0)
1989	N	2	2	2	3	0	2	12	5	16	12	644	616	660	628
	Z	(0.3)	(0.3)	(0.3)	(0.5)	(0.0)	(0.3)	(1.8)	(0.8)	(2.4)	(1.9)	(97.6)	(98.1)	(100.0)	(100.0)
1990	N	4	4	7	4	1	0	10	11	22	19	691	604	713	623
	Z	(0.6)	(0.6)	(1.0)	(0.6)	(0.1)	(0.0)	(1.4)	(1.8)	(3.1)	(3.0)	(96.9)	(97.0)	(100.0)	(100.0)
Duluth															
Business & Economics															
1987		2	4	1	4	0	4	2	3	5	15	463	1048	468	1063
1988		2	2	5	4	5	2	0	2	12	10	437	1035	449	1045
1989		2	6	2	6	10	6	2	1	16	19	441	1062	457	1081
1990		4	2	6	3	3	11	2	5	15	21	425	1060	440	1081
Educ. & Human Serv.															
1987		2	5	4	17	0	6	0	3	6	31	329	1091	335	1122
1988		2	7	2	12	1	5	1	3	6	27	307	1058	313	1085
1989		4	6	1	9	4	4	3	3	12	22	342	1098	354	1120
1990		2	10	1	8	3	3	3	3	9	24	299	1018	308	1042
Fine Arts															
1987		0	0	0	3	3	2	0	1	3	6	61	212	64	218
1988		1	1	1	3	1	2	0	1	3	7	72	217	75	224
1989		2	0	0	7	2	3	0	2	4	12	65	232	69	244
1990		1	0	0	6	1	2	0	1	2	9	85	252	87	261
Graduate															
1987		0	1	2	1	0	0	1	0	3	2	118	108	121	110
1988		0	1	3	2	0	0	0	1	3	4	92	168	95	172
1989		0	0	2	3	0	0	0	1	2	4	87	166	89	170
1990		1	0	1	4	0	0	0	0	2	4	80	164	82	168
Liberal Arts															
1987		6	14	10	16	5	6	0	5	21	41	694	1437	715	1478
1988		9	10	8	27	2	11	2	4	21	52	819	1529	840	1581
1989		4	15	11	27	18	14	3	5	36	61	733	1687	769	1748
1990		3	14	9	21	6	24	5	9	23	68	663	1697	686	1765

(continued on next page)

TABLE 3: MINORITY ENROLLMENT^a, BY GROUP, REGISTRATION STATUS (NEW vs. RETURNING)^b, AND CAMPUS/COLLEGE, FALL QUARTERS 1987 THROUGH 1990

Campus/College		Minority Group								Total Minority Students	ALL Other Students		TOTAL ALL STUDENTS		
		Black Non- Hispanic		American Indian or Alaskan		Asian or Pacific Islander		Hispanic			New	Return	New	Return	
		New	Return	New	Return	New	Return	New	Return						
Medicine															
	1987	0	0	1	1	0	1	0	1	1	3	36	52	37	55
	1988	0	1	0	1	0	0	0	1	0	3	33	51	33	54
	1989	0	0	0	0	2	0	0	0	2	0	24	68	26	68
	1990	0	0	1	1	0	2	0	0	1	3	35	60	36	63
Science & Engineering															
	1987	3	4	6	10	10	18	3	2	22	34	560	963	582	997
	1988	7	6	5	7	8	18	10	2	30	33	530	976	560	1009
	1989	4	11	5	11	12	20	2	8	23	50	561	991	584	1041
	1990	1	11	8	11	15	20	4	4	28	46	723	1107	751	1153
TOTAL Duluth															
	1987	N <u>13</u>	<u>28</u>	<u>24</u>	<u>52</u>	<u>18</u>	<u>37</u>	<u>6</u>	<u>15</u>	<u>61</u>	<u>132</u>	<u>2261</u>	<u>4911</u>	<u>2322</u>	<u>5043</u>
		Z (0.6)	(0.6)	(1.0)	(1.0)	(0.8)	(0.7)	(0.2)	(0.3)	(2.6)	(2.6)	(97.4)	(97.4)	(100.0)	(100.0)
	1988	N <u>21</u>	<u>28</u>	<u>24</u>	<u>56</u>	<u>17</u>	<u>38</u>	<u>13</u>	<u>14</u>	<u>75</u>	<u>136</u>	<u>2290</u>	<u>5034</u>	<u>2365</u>	<u>5170</u>
		Z (0.9)	(0.5)	(1.0)	(1.1)	(0.7)	(0.7)	(0.6)	(0.3)	(3.2)	(2.6)	(96.8)	(97.4)	(100.0)	(100.0)
	1989	N <u>16</u>	<u>38</u>	<u>21</u>	<u>63</u>	<u>48</u>	<u>47</u>	<u>10</u>	<u>20</u>	<u>95</u>	<u>168</u>	<u>2253</u>	<u>5304</u>	<u>2348</u>	<u>5472</u>
		Z (0.7)	(0.7)	(0.9)	(1.1)	(2.0)	(0.9)	(0.4)	(0.4)	(4.0)	(3.1)	(96.0)	(96.9)	(100.0)	(100.0)
	1990	N <u>12</u>	<u>37</u>	<u>26</u>	<u>54</u>	<u>28</u>	<u>62</u>	<u>14</u>	<u>22</u>	<u>80</u>	<u>175</u>	<u>2310</u>	<u>5358</u>	<u>2390</u>	<u>5533</u>
		Z (0.5)	(0.7)	(1.1)	(1.0)	(1.2)	(1.1)	(0.6)	(0.4)	(3.2)	(3.2)	(96.8)	(96.8)	(100.0)	(100.0)
Morris															
	1987	N <u>11</u>	<u>48</u>	<u>18</u>	<u>17</u>	<u>12</u>	<u>14</u>	<u>8</u>	<u>17</u>	<u>49</u>	<u>96</u>	<u>710</u>	<u>1112</u>	<u>759</u>	<u>1208</u>
		Z (1.4)	(4.0)	(2.4)	(1.4)	(1.6)	(1.2)	(1.1)	(1.4)	(6.5)	(8.0)	(93.5)	(92.0)	(100.0)	(100.0)
	1988	N <u>15</u>	<u>26</u>	<u>17</u>	<u>22</u>	<u>12</u>	<u>21</u>	<u>4</u>	<u>14</u>	<u>48</u>	<u>83</u>	<u>602</u>	<u>1288</u>	<u>650</u>	<u>1371</u>
		Z (2.3)	(1.9)	(2.6)	(1.6)	(1.9)	(1.5)	(0.6)	(1.0)	(7.4)	(6.0)	(92.6)	(94.0)	(100.0)	(100.0)
	1989	N <u>17</u>	<u>20</u>	<u>10</u>	<u>38</u>	<u>16</u>	<u>27</u>	<u>7</u>	<u>13</u>	<u>50</u>	<u>98</u>	<u>528</u>	<u>1365</u>	<u>578</u>	<u>1463</u>
		Z (3.0)	(1.4)	(1.7)	(2.6)	(2.8)	(1.8)	(1.2)	(0.9)	(8.7)	(6.7)	(91.3)	(93.3)	(100.0)	(100.0)
	1990	N <u>15</u>	<u>22</u>	<u>11</u>	<u>24</u>	<u>23</u>	<u>30</u>	<u>5</u>	<u>15</u>	<u>54</u>	<u>91</u>	<u>483</u>	<u>1393</u>	<u>537</u>	<u>1484</u>
		Z (2.8)	(1.5)	(2.0)	(1.6)	(4.3)	(2.0)	(0.9)	(1.0)	(10.0)	(6.1)	(90.0)	(93.9)	(100.0)	(100.0)
Twin Cities Agriculture															
	1987	1	5	1	0	1	4	0	2	3	11	140	620	143	631
	1988	4	5	0	0	1	5	1	3	6	13	158	570	164	583
	1989	6	4	1	0	2	5	1	2	10	11	149	528	159	539
	1990	12	11	1	0	5	4	3	2	21	17	162	551	183	568

(continued on next page)

TABLE 3: MINORITY ENROLLMENT^a, BY GROUP, REGISTRATION STATUS (NEW vs. RETURNING)^b, AND CAMPUS/COLLEGE, FALL QUARTERS 1987 THROUGH 1990

Campus/College	Minority Group								Total Minority Students		ALL Other Students		TOTAL ALL STUDENTS		
	Black Non-Hispanic		American Indian or Alaskan		Asian or Pacific Islander		Hispanic		New	Return	New	Return	New	Return	
	New	Return	New	Return	New	Return	New	Return							
Architecture/Land. Arch.^c															
1987															
1988															
1989	0	3	0	0	0	7	0	2	0	12	16	260	16	272	
1990	0	3	0	0	0	7	0	2	0	12	17	224	17	236	
						Not Available									
						Not Available									
Biological Sciences															
1987	1	8	0	0	0	13	1	2	2	23	31	274	33	297	
1988	0	5	1	2	0	11	1	5	2	23	19	271	21	294	
1989	0	3	0	1	1	13	0	5	1	22	30	260	31	282	
1990	0	4	0	0	1	17	1	4	2	25	36	260	38	285	
Education															
1987	6	20	0	2	3	11	2	9	11	42	234	1810	245	1852	
1988	8	16	1	5	1	13	1	9	11	43	190	1684	201	1727	
1989	0	16	0	8	4	16	3	6	7	46	203	1418	210	1464	
1990	6	20	2	15	1	18	0	5	9	58	146	1633	155	1691	
General College															
1987	79	110	31	32	83	103	28	33	221	278	749	1452	970	1730	
1988	73	143	36	31	59	125	31	38	199	337	778	1221	977	1558	
1989	96	102	36	36	70	102	31	28	233	268	669	1081	902	1349	
1990	124	118	36	45	88	92	31	42	279	297	574	971	853	1268	
Graduate School															
1987	27	57	9	26	27	112	17	49	80	244	1759	6192	1839	6436	
1988	12	70	4	26	23	101	16	47	55	244	1727	6138	1782	6382	
1989	32	63	2	18	27	110	16	48	77	239	1713	6081	1790	6320	
1990	34	78	8	13	38	100	11	53	91	244	1714	6251	1805	6495	
Health Sciences															
Dental Hygiene															
1987	0	1	1	0	0	0	0	1	1	2	9	36	10	38	
1988	0	1	0	1	1	2	1	0	2	4	9	36	11	40	
1989	0	0	0	0	0	5	0	1	0	6	10	39	10	45	
1990	0	1	0	0	0	4	1	0	1	5	9	33	10	38	
Dentistry															
1987	1	2	0	1	3	12	1	1	5	16	53	334	58	350	
1988	0	1	0	2	1	15	1	1	2	19	50	310	52	329	
1989	0	0	0	1	1	12	2	4	3	17	39	288	42	305	
1990	1	0	0	1	2	13	1	5	4	19	41	262	45	281	
Medical School															
1987	1	15	1	8	9	45	2	18	13	86	113	1700	126	1786	
1988	2	21	0	8	13	85	5	23	20	137	101	1705	121	1842	
1989	2	22	1	7	9	87	3	22	15	138	92	1683	107	1821	
1990	2	19	1	7	10	98	7	19	20	143	91	1705	111	1848	

(continued on next page)

TABLE 3: MINORITY ENROLLMENT^a, BY GROUP, REGISTRATION STATUS (NEW vs. RETURNING)^b, AND CAMPUS/COLLEGE, FALL QUARTERS 1987 THROUGH 1990

Campus/College	Minority Group								Total Minority Students	ALL Other Students		TOTAL ALL STUDENTS		
	Black Non- Hispanic		American Indian or Alaskan		Asian or Pacific Islander		Hispanic			New	Return	New	Return	
	New	Return	New	Return	New	Return	New	Return						
Medical Technology														
1987	0	0	0	0	2	2	0	0	2	2	4	44	6	46
1988	2	0	0	0	0	7	0	0	2	7	9	39	11	46
1989	0	2	0	0	0	7	0	1	0	10	8	64	8	74
1990	0	1	1	0	0	6	0	1	1	8	4	60	5	68
Mortuary Science														
1987	0	0	0	0	0	0	0	0	0	0	15	35	15	35
1988	0	1	0	1	0	0	1	1	1	3	19	28	20	31
1989	0	0	0	1	0	0	0	0	0	1	22	37	22	38
1990	0	0	0	0	0	0	1	0	1	0	26	41	27	41
Nursing														
1987	1	2	0	0	0	3	1	1	2	6	29	272	31	278
1988	0	2	0	0	0	2	0	2	0	6	6	181	6	187
1989	0	1	0	0	1	3	0	0	1	4	15	170	16	174
1990	0	1	0	0	0	2	0	0	0	3	30	149	30	152
Occupational Therapy														
1987	0	0	0	0	0	1	0	0	0	1	10	65	10	66
1988	0	0	0	1	0	1	0	0	0	2	13	64	13	66
1989	0	0	0	0	0	1	0	0	0	1	14	61	14	62
1990	0	0	0	0	0	1	0	0	0	1	9	58	9	59
Pharmacy														
1987	0	1	0	0	3	10	1	0	4	11	43	271	47	282
1988	0	2	0	0	2	14	0	1	2	17	52	255	54	272
1989	2	2	0	1	1	13	1	1	4	17	55	267	59	284
1990	1	3	0	1	1	14	1	1	3	19	48	273	51	292
Physical Therapy														
1987	0	0	0	0	0	0	0	0	0	0	12	47	12	47
1988	0	1	0	0	0	0	0	0	0	1	7	53	7	54
1989	0	0	0	0	0	1	0	0	0	1	12	48	12	49
1990	0	0	0	0	1	1	0	0	1	1	11	47	12	48
Public Health														
1987	1	2	0	2	0	1	0	2	1	7	66	157	67	164
1988	1	2	0	1	4	1	1	2	6	6	79	154	85	160
1989	2	1	0	0	2	2	1	1	5	4	83	183	88	187
1990	0	2	0	0	0	4	0	3	0	9	72	183	72	192
Veterinary Medicine														
1987	0	2	0	1	0	2	1	1	1	6	43	235	44	241
1988	1	1	0	1	1	3	0	3	2	8	42	224	44	232
1989	0	1	1	0	0	3	1	3	2	7	35	212	37	219
1990	0	1	0	1	1	2	0	4	1	8	48	196	49	204

(continued on next page)

TABLE 3: MINORITY ENROLLMENT^a, BY GROUP, REGISTRATION STATUS (NEW vs. RETURNING)^b, AND CAMPUS/COLLEGE, FALL QUARTERS 1987 THROUGH 1990

Campus/College	Minority Group								Total Minority Students	ALL Other Students		TOTAL ALL STUDENTS		
	Black Non-Hispanic		American Indian or Alaskan		Asian or Pacific Islander		Hispanic			New	Return	New	Return	
	New	Return	New	Return	New	Return	New	Return						
SUBTOTAL Hlth Sci.														
1987	4	25	2	12	17	76	6	24	29	137	397	3196	426	3333
1988	6	32	0	15	22	130	9	33	37	210	387	3049	424	3259
1989	6	29	2	10	14	134	8	33	30	206	385	3052	415	3258
1990	4	28	2	10	15	145	11	33	32	216	389	3007	421	3223
Human Ecology														
1987	5	30	1	4	8	42	1	0	15	76	157	1074	172	1150
1988	4	26	1	5	9	39	4	4	18	74	144	974	162	1048
1989	4	23	0	6	3	46	3	3	10	78	149	892	159	970
1990	2	28	0	8	1	32	3	14	6	82	137	874	143	956
Law School														
1987	7	13	1	5	6	9	5	10	19	37	196	519	215	556
1988	6	15	1	6	17	14	6	11	30	46	168	519	198	565
1989	13	18	3	5	12	25	8	14	36	62	199	499	235	561
1990	15	24	3	5	13	29	1	16	32	74	212	470	244	544
Liberal Arts														
1987	67	236	25	76	169	478	43	137	304	927	3910	11941	4214	12868
1988	70	247	24	70	151	504	62	140	307	961	3615	11627	3922	12588
1989	77	244	25	59	157	487	47	150	306	940	3492	11197	3798	12137
1990	83	249	23	82	192	504	55	148	353	983	3112	11257	3465	12240
Management														
1987	2	18	0	2	2	41	0	16	4	77	89	1241	93	1291
1988	0	20	0	3	2	45	0	14	2	82	68	949	70	1031
1989	1	17	0	7	2	45	1	10	4	79	69	797	73	876
1990	0	13	0	6	4	47	3	13	7	79	87	791	94	870
Natural Resources														
1987	0	0	1	1	0	0	0	0	1	1	59	223	60	224
1988	0	1	0	0	0	1	0	1	0	3	55	231	55	234
1989	0	1	1	2	1	2	0	1	2	6	72	256	74	262
1990	3	0	1	4	1	3	0	1	5	8	122	302	127	310
Technology														
1987	19	57	4	16	64	366	5	27	92	466	1035	3786	1127	4252
1988	21	64	4	14	86	349	12	26	123	453	1003	3571	1126	4024
1989	9	54	3	9	77	354	7	29	96	446	962	3214	1058	3660
1990	11	42	2	8	80	343	11	28	104	421	931	3158	1035	3579
University College														
1987	0	14	1	1	0	3	0	2	1	20	0	115	1	135
1988	0	9	0	2	0	3	0	3	0	17	1	158	1	175
1989	0	7	0	2	0	0	0	4	0	13	1	132	1	145
1990	0	12	0	0	0	0	0	1	0	13	2	112	2	125

(continued on next page)

TABLE 3: MINORITY ENROLLMENT^a, BY GROUP, REGISTRATION STATUS (NEW vs. RETURNING)^b, AND CAMPUS/COLLEGE, FALL QUARTERS 1987 THROUGH 1990

Campus/College	Minority Group														
	Black Non-Hispanic		American Indian or Alaskan		Asian or Pacific Islander		Hispanic		Total Minority Students		ALL Other Students		TOTAL ALL STUDENTS		
	New	Return	New	Return	New	Return	New	Return	New	Return	New	Return	New	Return	
TOTAL Twin Cities	1987	N 218	593	76	177	380	1258	108	311	782	2339	8756	32416	9538	34755
		Z (2.3)	(1.7)	(0.8)	(0.5)	(4.0)	(3.6)	(1.1)	(0.9)	(8.2)	(6.7)	(91.8)	(93.3)	(100.0)	(100.0)
	1988	N 204	653	72	179	371	1340	143	334	790	2506	8313	30962	9103	33468
		Z (2.2)	(2.0)	(0.8)	(0.5)	(4.1)	(4.0)	(1.6)	(1.0)	(8.7)	(7.5)	(91.3)	(92.5)	(100.0)	(100.0)
1989	N 244	584	73	163	370	1346	125	335	812	2428	8109	29667	8921	32095	
	Z (2.7)	(1.8)	(0.8)	(0.5)	(4.2)	(4.2)	(1.4)	(1.1)	(9.1)	(7.6)	(90.9)	(92.4)	(100.0)	(100.0)	
1990	N 294	630	78	196	439	1341	130	362	941	2529	7641	29861	8582	32390	
	Z (3.4)	(2.0)	(0.9)	(0.6)	(5.1)	(4.1)	(1.5)	(1.1)	(10.9)	(7.8)	(89.1)	(92.2)	(100.0)	(100.0)	
Waseca	1987	N 1	3	0	1	0	1	0	1	6	504	652	505	658	
		Z (1.5)	(0.5)	(0.0)	(0.1)	(0.0)	(0.1)	(0.0)	(0.1)	(1.5)	(0.8)	(98.5)	(99.2)	(100.0)	(100.0)
	1988	N 0	2	1	0	1	1	0	0	2	3	428	736	430	739
		Z (0.0)	(0.3)	(0.2)	(0.0)	(0.2)	(0.1)	(0.0)	(0.0)	(0.4)	(0.4)	(99.6)	(99.6)	(100.0)	(100.0)
1989	N 9	0	0	0	1	2	0	0	10	2	602	560	612	562	
	Z (1.5)	(0.0)	(0.0)	(0.0)	(0.1)	(0.4)	(0.0)	(0.0)	(1.6)	(0.4)	(98.4)	(99.6)	(100.0)	(100.0)	
1990	N 7	3	1	0	1	1	2	0	11	4	443	584	454	588	
	Z (1.6)	(0.5)	(0.2)	(0.0)	(0.2)	(0.2)	(0.4)	(0.0)	(2.4)	(0.7)	(97.6)	(99.3)	(100.0)	(100.0)	
TOTAL ENROLLMENT	1987	N 243	672	122	248	411	1310	129	348	905	2578	12853	39588	13758	42166
		Z (1.8)	(1.6)	(0.9)	(0.6)	(3.0)	(3.1)	(0.9)	(0.8)	(6.6)	(6.1)	(93.4)	(93.9)	(100.0)	(100.0)
	1988	N 242	710	117	260	403	1400	165	369	927	2739	12240	38611	13167	41350
		Z (1.8)	(1.7)	(0.9)	(0.6)	(3.1)	(3.4)	(1.2)	(0.9)	(7.0)	(6.6)	(93.0)	(93.4)	(100.0)	(100.0)
1989	N 288	644	106	262	435	1424	154	373	983	2708	12136	37512	13119	40220	
	Z (2.2)	(1.6)	(0.8)	(0.7)	(3.3)	(3.5)	(1.2)	(0.9)	(7.5)	(6.7)	(92.5)	(93.3)	(100.0)	(100.0)	
1990	N 332	696	123	278	492	1434	161	410	1108	2818	11568	37800	12676	40618	
	Z (2.6)	(1.7)	(1.0)	(0.7)	(3.9)	(3.5)	(1.2)	(1.0)	(8.7)	(6.9)	(91.3)	(93.1)	(100.0)	(100.0)	

^a See footnote at end of Table 1A.

^b (i) New Student - Student registering for the first time at the University. Included are: new high school, new adult special, and new advanced standing transfer student.

(ii) Returning Student - Student who has registered at the University before this term returning to the University as student other than new student. Included are: continuing student, inter-campus transfer, intra campus transfer and readmitted.

^c See Notes on page 1.

Figure 3: Minority Enrollment By Group And Level
 Twin Cities Campus, U. Of M.
 Fall Quarter, 1990

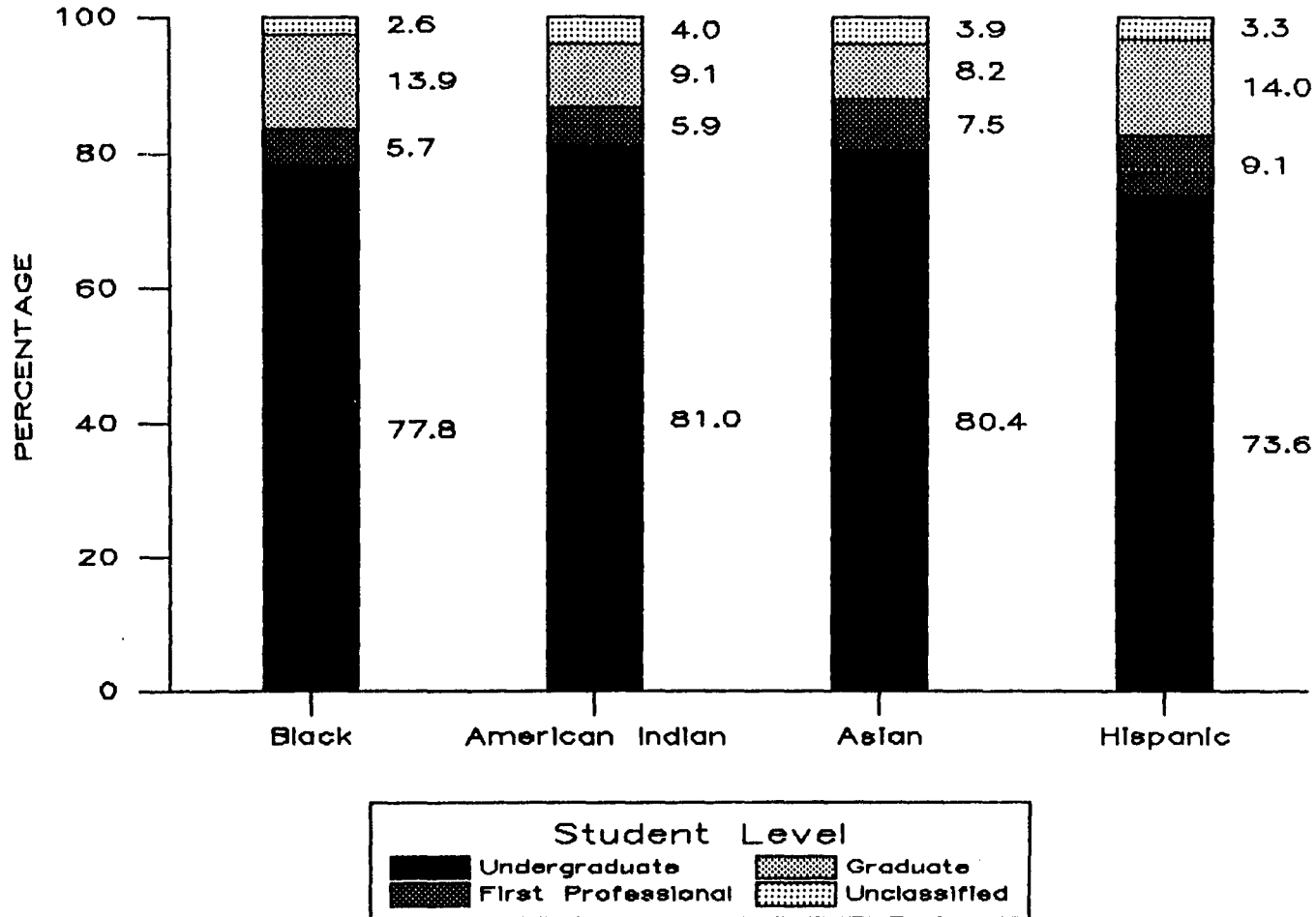


TABLE 4: MINORITY ENROLLMENT^a, BY GROUP, CAMPUS AND STUDENT LEVEL, FALL QUARTERS 1987 THROUGH 1990

Campus/Student Level	Minority Group								Total Minority Students	ALL Other Students		TOTAL ALL STUDENTS			
	Black Non- Hispanic		American Indian or Alaskan		Asian or Pacific Islander		Hispanic			N	%	N	%		
	N	%	N	%	N	%	N	%							
CROOKSTON															
Undergraduate	1987	0	0.0	5	100.0	0	0.0	10	90.9	15	88.2	819	73.2	834	73.4
	1988	3	100.0	5	83.0	1	50.0	11	91.7	20	87.0	883	73.7	903	74.0
	1989	4	100.0	5	100.0	1	50.0	15	88.2	25	89.3	736	58.4	761	59.1
	1990	8	100.0	9	81.8	0	0.0	18	85.7	35	85.4	799	61.7	834	62.4
Freshman	1987	0	0.0	4	80.0	0	0.0	8	72.7	12	70.6	500	44.7	512	45.1
	1988	2	67.0	3	50.0	1	50.0	8	66.7	14	60.9	552	46.1	566	46.4
	1989	4	100.0	2	40.0	0	0.0	11	64.7	17	60.7	447	35.5	464	36.0
	1990	6	75.0	6	54.5	0	0.0	13	61.9	25	61.0	482	37.2	507	37.9
Sophomore	1987	0	0.0	1	20.0	0	0.0	2	18.2	3	17.6	319	28.5	322	28.3
	1988	1	33.0	2	33.3	0	0.0	3	25.0	6	26.1	331	27.6	337	27.6
	1989	0	0.0	3	60.0	1	50.0	4	23.5	8	28.6	289	22.9	297	23.1
	1990	2	25.0	3	27.3	0	0.0	5	23.8	10	24.4	317	24.5	327	24.5
Unclassified ^d	1987	0	0.0	0	0.0	1	100.0	1	9.1	2	11.8	300	26.8	302	26.6
	1988	0	0.0	1	16.7	1	50.0	1	8.3	3	13.0	315	26.3	318	26.0
	1989	0	0.0	0	0.0	1	50.0	2	11.8	3	10.7	524	41.6	527	40.9
	1990	0	0.0	2	18.2	1	100.0	3	14.3	6	14.6	496	38.3	502	37.6
TOTAL CROOKSTON	1987	0	0.0	5	100.0	1	100.0	11	100.0	17	100.0	1119	100.0	1136	100.0
	1988	3	100.0	6	100.0	2	100.0	12	100.0	23	100.0	1198	100.0	1221	100.0
	1989	4	100.0	5	100.0	2	100.0	17	100.0	28	100.0	1260	100.0	1288	100.0
	1990	8	100.0	11	100.0	1	100.0	21	100.0	41	100.0	1295	100.0	1336	100.0

(continued on next page)

TABLE 4: MINORITY ENROLLMENT^a, BY GROUP, CAMPUS AND STUDENT LEVEL, FALL QUARTERS 1987 THROUGH 1990

Campus/Student Level	Minority Group										Total Minority Students	ALL Other Students		TOTAL ALL STUDENTS	
	Black Non-Hispanic		American Indian or Alaskan		Asian or Pacific Islander		Hispanic		N	%		N	%	N	%
	N	%	N	%	N	%	N	%							
DULUTH															
Undergraduate	1987	40	97.6	68	89.5	53	96.4	19	90.4	180	93.3	6719	93.7	6899	93.7
	1988	51	96.2	69	86.3	53	96.4	25	92.6	198	92.1	6826	93.3	7024	93.2
	1989	54	100.0	78	92.9	90	94.7	29	96.7	251	95.4	7026	93.0	7277	93.1
	1990	48	98.0	72	90.0	87	96.7	36	100.0	243	95.3	7188	93.7	7431	93.7
Freshman	1987	17	41.5	28	36.8	25	45.5	7	33.3	77	39.9	2855	39.8	2935	39.9
	1988	26	49.0	30	37.5	25	45.5	14	51.9	95	44.2	2900	39.6	2995	39.7
	1989	25	46.3	29	34.5	46	48.4	11	36.7	111	42.2	2322	30.7	2433	31.1
	1990	19	38.8	32	40.0	39	43.3	15	41.6	105	41.2	2357	30.7	2462	31.1
Sophomore	1987	6	14.6	11	14.5	4	7.3	3	14.2	24	12.4	1502	20.9	1526	20.7
	1988	10	18.9	16	20.0	14	25.4	4	14.8	44	20.5	1441	19.7	1485	19.7
	1989	13	24.1	15	17.9	17	17.9	5	16.7	50	19.0	1571	20.8	1621	20.7
	1990	10	20.4	12	15.0	25	27.8	5	13.9	52	20.4	1550	20.2	1602	20.2
Junior	1987	8	19.5	13	17.1	9	16.4	4	19.0	34	17.6	1112	15.5	1146	15.6
	1988	7	13.2	8	10.0	4	7.3	3	11.1	22	10.2	1229	16.8	1251	16.6
	1989	7	12.9	12	14.3	10	10.5	7	23.3	36	13.7	1290	17.1	1326	17.0
	1990	9	18.4	9	11.3	10	11.1	6	16.7	34	13.3	1365	17.8	1399	17.6
Senior	1987	9	22.0	16	21.1	15	27.3	5	23.8	45	23.3	1247	17.4	1292	17.5
	1988	8	15.1	15	18.8	10	18.2	4	14.8	37	17.2	1256	17.2	1293	17.2
	1989	9	16.7	22	26.2	17	17.9	6	20.0	54	20.5	1843	24.4	1897	24.3
	1990	10	20.4	19	23.7	13	14.5	10	27.8	52	20.4	1916	25.0	1968	24.8
First Professional ^b	1987	0	0.0	2	2.6	1	1.8	1	4.8	4	2.1	88	1.2	92	1.2
	1988	1	1.9	1	1.2	1	1.8	1	3.7	4	1.9	83	1.1	87	1.2
	1989	0	0.0	0	0.0	2	2.1	0	0.0	2	0.8	92	1.2	94	1.2
	1990	0	0.0	2	2.5	2	2.2	0	0.0	4	1.6	95	1.2	99	1.3
Graduate ^c	1987	1	2.4	4	5.3	0	0.0	1	4.8	6	3.1	273	3.8	279	3.8
	1988	1	1.9	6	7.5	0	0.0	1	3.7	8	3.7	312	4.3	320	4.2
	1989	0	0.0	5	5.9	0	0.0	1	3.3	6	2.3	308	4.1	314	4.0
	1990	1	2.0	5	6.3	0	0.0	0	0.0	6	2.3	288	3.8	294	3.7
Unclassified ^d	1987	0	0.0	2	2.6	1	1.8	0	0.0	3	1.5	92	1.3	95	1.3
	1988	0	0.0	4	5.0	1	1.8	0	0.0	5	2.3	99	1.3	104	1.4
	1989	0	0.0	1	1.2	3	3.2	0	0.0	4	1.5	131	1.7	135	1.7
	1990	0	0.0	1	1.2	1	1.1	0	0.0	2	0.8	97	1.3	99	1.3
TOTAL DULUTH	1987	41	100.0	76	100.0	55	100.0	21	100.0	193	100.0	7172	100.0	7365	100.0
	1988	53	100.0	80	100.0	55	100.0	27	100.0	215	100.0	7320	100.0	7535	100.0
	1989	54	100.0	84	100.0	95	100.0	30	100.0	263	100.0	7557	100.0	7820	100.0
	1990	49	100.0	80	100.0	90	100.0	36	100.0	255	100.0	7668	100.0	7923	100.0

(continued on next page)

TABLE 4: MINORITY ENROLLMENT^a, BY GROUP, CAMPUS AND STUDENT LEVEL, FALL QUARTERS 1987 THROUGH 1990

Campus/Student Level	Minority Group										Total Minority Students	ALL Other Students		TOTAL ALL STUDENTS	
	Black Non- Hispanic		American Indian or Alaskan		Asian or Pacific Islander		Hispanic		N	%		N	%	N	%
	N	%	N	%	N	%	N	%							
MORRIS															
Undergraduate	1987	59	100.0	34	97.1	26	100.0	25	100.0	144	99.3	1791	98.3	1935	98.4
	1988	41	100.0	38	97.4	33	100.0	18	100.0	130	99.2	1870	98.9	2000	99.0
	1989	37	100.0	43	100.0	42	97.7	20	100.0	142	99.3	1880	99.1	2022	99.1
	1990	36	97.3	35	100.0	53	100.0	20	100.0	144	99.3	1866	99.5	2010	99.5
Freshman	1987	15	25.4	20	57.1	14	53.8	16	64.0	65	44.8	759	41.7	824	41.9
	1988	19	46.3	16	41.0	16	48.5	8	44.5	59	45.0	639	33.8	698	34.6
	1989	23	62.2	13	30.2	19	44.2	7	35.0	62	43.3	549	28.9	611	30.0
	1990	19	51.4	12	34.3	25	47.2	3	15.0	59	40.7	486	25.9	545	27.0
Sophomore	1987	12	20.3	8	22.9	5	19.2	5	20.0	30	20.7	421	23.1	451	22.9
	1988	5	12.2	13	33.3	12	36.4	4	22.2	34	25.9	589	31.2	623	30.8
	1989	6	16.2	15	34.9	12	27.9	6	30.0	39	27.3	535	28.2	574	28.1
	1990	11	29.7	8	22.9	14	26.4	7	35.0	40	27.6	500	26.7	540	26.7
Junior	1987	23	39.0	3	8.6	5	19.2	2	8.0	33	22.8	352	19.3	385	19.6
	1988	11	26.8	6	15.4	4	12.1	4	22.2	25	19.1	375	19.8	400	19.8
	1989	4	10.8	8	18.6	9	20.9	5	25.0	26	18.2	495	26.1	521	25.5
	1990	4	10.8	9	25.7	8	15.1	5	25.0	26	17.9	503	26.8	529	26.2
Senior	1987	9	15.3	3	8.6	2	7.7	2	8.0	16	11.0	259	14.2	275	14.0
	1988	6	14.7	3	7.7	1	3.0	2	11.1	12	9.2	267	14.1	279	13.8
	1989	4	10.8	7	16.3	2	4.7	2	10.0	15	10.5	301	15.8	316	15.5
	1990	2	5.4	6	17.1	6	11.3	5	25.0	19	13.1	377	20.1	396	19.6
Unclassified ^d	1987	0	0.0	1	2.9	0	0.0	0	0.0	1	0.7	31	1.7	32	1.6
	1988	0	0.0	1	2.6	0	0.0	0	0.0	1	0.8	20	1.1	21	1.0
	1989	0	0.0	0	0.0	1	2.3	0	0.0	1	0.7	18	0.9	19	0.9
	1990	1	2.7	0	0.0	0	0.0	0	0.0	1	0.7	10	0.5	11	0.5
TOTAL MORRIS	1987	59	100.0	35	100.0	26	100.0	25	100.0	145	100.0	1822	100.0	1967	100.0
	1988	41	100.0	39	100.0	33	100.0	18	100.0	131	100.0	1890	100.0	2021	100.0
	1989	37	100.0	43	100.0	43	100.0	20	100.0	143	100.0	1898	100.0	2041	100.0
	1990	37	100.0	35	100.0	53	100.0	20	100.0	145	100.0	1876	100.0	2021	100.0

(continued on next page)

TABLE 4: MINORITY ENROLLMENT^a, BY GROUP, CAMPUS AND STUDENT LEVEL, FALL QUARTERS 1987 THROUGH 1990

Campus/Student Level	Minority Group										Total Minority Students	ALL Other Students		TOTAL ALL STUDENTS	
	Black Non-Hispanic		American Indian or Alaskan		Asian or Pacific Islander		Hispanic		N	%		N	%	N	%
	N	%	N	%	N	%	N	%							
TWIN CITIES															
Undergraduate	1987	659	81.3	196	77.5	1392	84.9	305	72.8	2552	81.8	28412	69.0	30964	69.9
	1988	699	81.6	199	79.3	1404	82.1	349	73.1	2651	80.5	26627	67.8	29278	68.8
	1989	649	78.4	196	83.1	1379	80.4	321	69.8	2545	78.5	25061	66.3	27606	67.3
	1990	719	77.8	222	81.0	1432	80.4	362	73.6	2735	78.8	24343	64.9	27078	66.1
Freshman	1987	262	32.3	85	33.6	466	28.4	121	28.9	934	29.9	8544	20.8	9478	21.4
	1988	307	35.8	91	36.3	470	27.5	147	30.8	1015	30.8	7775	19.8	8790	20.7
	1989	283	34.2	101	42.8	441	25.7	133	28.9	958	29.5	7006	18.5	7964	19.4
	1990	355	38.4	108	39.4	479	26.9	139	28.3	1081	31.1	6035	16.1	7116	17.4
Sophomore	1987	169	20.8	51	20.2	313	19.1	78	18.6	611	19.6	6369	15.5	6980	15.8
	1988	159	18.6	44	17.5	302	17.7	65	13.6	570	17.3	5910	15.1	6480	15.2
	1989	128	15.5	28	11.9	300	17.5	66	14.4	522	16.1	5279	14.0	5801	14.2
	1990	138	14.9	43	15.7	306	17.2	71	14.4	558	16.1	5126	13.7	5684	13.9
Junior	1987	121	14.9	34	13.4	298	18.2	62	14.8	515	16.5	6056	14.7	6571	14.8
	1988	117	13.7	39	15.5	282	16.5	85	17.8	523	15.9	5788	14.7	6311	14.8
	1989	122	14.7	34	14.4	301	17.5	52	11.3	509	15.7	5743	15.2	6252	15.2
	1990	108	11.7	29	10.6	281	15.8	67	13.6	485	14.0	5606	14.9	6091	14.8
Senior	1987	107	13.2	26	10.3	315	19.2	44	10.5	492	15.8	7443	18.1	7935	17.9
	1988	116	13.5	25	10.0	350	20.4	52	10.9	543	16.5	7154	18.2	7697	18.1
	1989	116	14.0	33	14.0	337	19.7	70	15.2	556	17.2	7033	18.6	7589	18.5
	1990	118	12.8	42	15.3	366	20.5	85	17.3	611	17.6	7576	20.2	8187	20.0
First Professional ^b	1987	38	4.7	15	5.9	67	4.1	33	7.9	153	4.9	2317	5.6	2470	5.6
	1988	40	4.7	13	5.2	97	5.7	40	8.4	190	5.7	2132	5.4	2322	5.4
	1989	49	5.9	15	6.3	110	6.4	50	10.9	224	6.9	2033	5.4	2257	5.5
	1990	53	5.7	16	5.9	133	7.5	45	9.1	247	7.1	2115	5.6	2362	5.8
Graduate ^c	1987	92	11.3	37	14.6	137	8.4	69	16.5	335	10.7	8522	20.7	8857	20.0
	1988	93	10.8	32	12.7	131	7.6	71	14.9	327	9.9	8520	21.7	8847	20.8
	1989	105	12.7	20	8.5	141	8.2	67	14.5	333	10.3	8418	22.3	8751	21.3
	1990	128	13.9	25	9.1	145	8.2	69	14.0	367	10.6	8815	23.5	9182	22.4
Unclassified ^d	1987	22	2.7	5	2.0	42	2.6	12	2.8	81	2.6	1921	4.7	2002	4.5
	1988	25	2.9	7	2.8	79	4.6	17	3.6	128	3.9	1996	5.1	2124	5.0
	1989	25	3.0	5	2.1	86	5.0	22	4.8	138	4.3	2264	6.0	2402	5.9
	1990	24	2.6	11	4.0	70	3.9	16	3.3	121	3.5	2229	6.0	2350	5.7
TOTAL TWIN CITIES	1987	811	100.0	253	100.0	1638	100.0	419	100.0	3121	100.0	41172	100.0	44293	100.0
	1988	857	100.0	251	100.0	1711	100.0	477	100.0	3296	100.0	39275	100.0	42571	100.0
	1989	828	100.0	236	100.0	1716	100.0	460	100.0	3240	100.0	37776	100.0	41016	100.0
	1990	924	100.0	274	100.0	1780	100.0	492	100.0	3470	100.0	37502	100.0	40972	100.0

(continued on next page)

TABLE 4: MINORITY ENROLLMENT^a, BY GROUP, CAMPUS AND STUDENT LEVEL, FALL QUARTERS 1987 THROUGH 1990

Campus/Student Level	Minority Group								Total Minority Students	ALL Other Students		TOTAL ALL STUDENTS			
	Black Non- Hispanic		American Indian or Alaskan		Asian or Pacific Islander		Hispanic			N	%	N	%		
	N	%	N	%	N	%	N	%							
WASECA															
Undergraduate	1987	4	100.0	1	100.0	1	100.0	1	100.0	7	100.0	983	85.0	990	85.1
	1988	2	100.0	1	100.0	2	100.0	0	0.0	5	100.0	853	73.3	858	73.4
	1989	9	100.0	0	0.0	3	100.0	0	0.0	12	100.0	797	68.6	809	68.9
	1990	9	90.0	1	100.0	1	50.0	2	100.0	13	86.7	790	76.9	803	77.1
Freshman	1987	2	50.0	1	100.0	1	100.0	1	100.0	5	71.4	672	58.1	677	58.2
	1988	2	100.0	1	100.0	0	0.0	0	0.0	3	60.0	542	46.6	545	46.6
	1989	9	100.0	0	0.0	1	33.3	0	0.0	10	83.3	510	43.9	520	44.3
	1990	8	80.0	1	100.0	0	0.0	2	100.0	11	73.4	498	48.5	509	48.9
Sophomore	1987	2	50.0	0	0.0	0	0.0	0	0.0	2	28.6	311	26.9	313	26.9
	1988	0	0.0	0	0.0	2	100.0	0	0.0	2	40.0	311	26.7	313	26.8
	1989	0	0.0	0	0.0	2	66.7	0	0.0	2	16.7	287	24.7	289	24.6
	1990	1	10.0	0	0.0	1	50.0	0	0.0	2	13.3	292	28.4	294	28.2
Unclassified ^d	1987	0	0.0	0	0.0	0	0.0	0	0.0	0	0.0	173	15.0	173	14.9
	1988	0	0.0	0	0.0	0	0.0	0	0.0	0	0.0	311	26.7	311	26.6
	1989	0	0.0	0	0.0	0	0.0	0	0.0	0	0.0	365	31.4	365	31.1
	1990	1	10.0	0	0.0	1	50.0	0	0.0	2	13.3	237	33.1	239	22.9
TOTAL WASECA	1987	4	100.0	1	100.0	1	100.0	1	100.0	7	100.0	1156	100.0	1163	100.0
	1988	2	100.0	1	100.0	2	100.0	0	0.0	5	100.0	1164	100.0	1169	100.0
	1989	9	100.0	0	0.0	3	100.0	0	0.0	12	100.0	1162	100.0	1174	100.0
	1990	10	100.0	1	100.0	2	100.0	2	100.0	15	100.0	1027	100.0	1042	100.0

^aSee footnote at end of Table 1A.

^bTwin Cities Campus
Includes regular students of the School of Dentistry, Medical School, Law School, and the College of Veterinary Medicine, and Doctor of Pharmacy students of the College of Pharmacy.

Duluth Campus
Includes all students of School of Medicine.

^cTwin Cities Campus
Includes students enrolled in the Graduate School, program students in the School of Public Health, M.Ed. degree students in the College of Education and M.Ag. degree students in the College of Agriculture.

Duluth Campus
Includes students enrolled in the Graduate School, M.Ed. degree students in the College of Education and Human Service Profession and Master of Industrial Safety program students in the College of Sciences and Engineering.

^dIncludes all special students.

Figure 4: % Change Of Minority Students By Group
 University Of Minnesota
 1981 vs 1990, 1986 vs 1990 & 1989 vs 1990

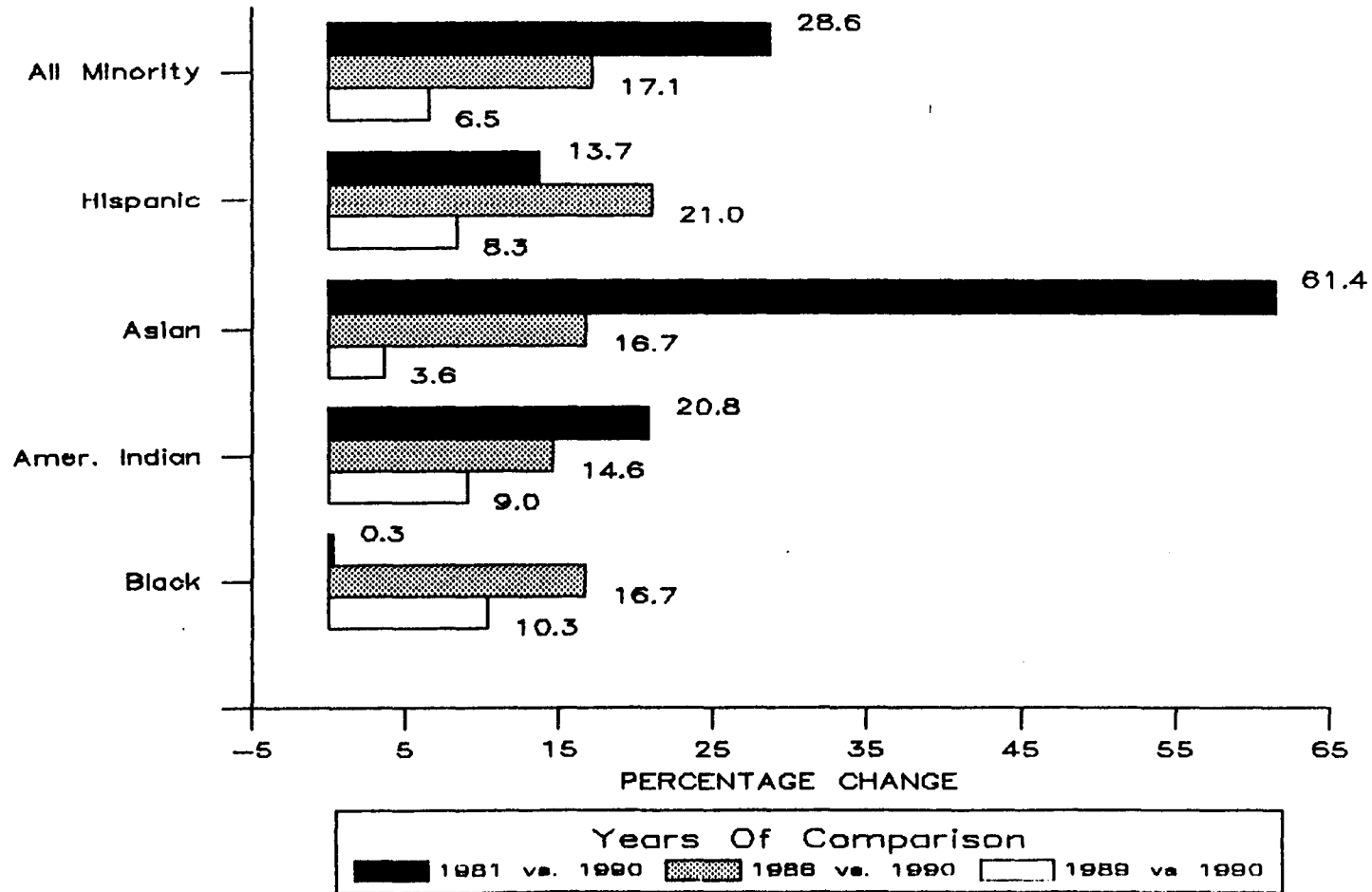


TABLE 5: COMPARISON OF MINORITY ENROLLMENT, BY GROUP AND CAMPUS, FALL QUARTERS 1981 AND 1986 THROUGH 1990

Minority Group/Campus	1981	1986	1987	1988	1989	1990	Increase In Attendance 1981-1990		Increase In Attendance 1986-1990		Increase In Attendance 1989-1990	
							N	%	N	%	N	%
Black Non-Hispanic												
Crookston	2	0	0	3	4	8	6	300.0	8	-	4	100.0
Duluth	32	28	41	53	54	49	17	53.1	21	75.0	-5	-9.3
Morris	65	70	59	41	37	37	-28	-43.1	-33	-47.1	0	0.0
Twin Cities	926	776	811	857	828	924	-2	-0.2	148	19.1	96	11.6
Waseca	0	7	4	2	9	10	10	-	3	42.9	1	11.1
Total University	1025	881	915	956	932	1028	3	0.3	147	16.7	96	10.3
American Indian or Alaskan												
Crookston	12	5	5	6	5	11	-1	-8.3	6	120.0	6	120.0
Duluth	73	82	76	80	84	80	7	9.6	-2	-2.4	-4	-4.8
Morris	11	24	35	39	43	35	24	218.2	11	45.8	-8	-18.6
Twin Cities	236	238	253	251	236	274	38	16.1	36	15.1	38	16.1
Waseca	0	1	1	1	0	1	1	-	0	0.0	1	-
Total University	332	350	370	377	368	401	69	20.8	51	14.6	33	9.0
Asian or Pacific Islander												
Crookston	3	1	1	2	2	1	-2	-67.0	0	0.0	-1	-50.0
Duluth	23	43	55	55	95	90	67	291.3	47	109.3	-5	-5.3
Morris	5	26	26	33	43	53	48	960.0	27	103.8	10	23.3
Twin Cities	1162	1578	1638	1711	1716	1780	618	53.2	202	12.8	64	3.7
Waseca	0	2	1	2	3	2	2	-	0	0.0	-1	-33.3
Total University	1193	1650	1721	1803	1859	1926	733	61.4	276	16.7	67	3.6
Hispanic												
Crookston	16	16	11	12	17	21	5	31.3	5	31.3	4	23.5
Duluth	20	24	21	27	30	36	16	80.0	12	50.0	6	20.0
Morris	4	31	25	18	20	20	16	400.0	-11	-35.5	0	0.0
Twin Cities	462	401	419	477	460	492	30	6.5	91	22.7	32	7.0
Waseca	0	0	1	0	0	2	2	-	2	-	2	-
Total University	502	472	477	534	527	571	69	13.7	99	21.0	44	8.3
All Minority Students												
Crookston	33	22	17	23	28	41	8	24.2	19	86.4	13	46.4
Duluth	148	177	193	215	263	255	107	72.3	78	44.1	-8	-3.0
Morris	85	151	145	131	143	145	60	70.6	-6	-4.0	2	1.4
Twin Cities	2786	2993	3121	3296	3240	3470	684	24.6	477	15.9	230	7.1
Waseca	0	10	7	5	12	15	15	-	5	50.0	3	25.0
Total University	3052	3353	3483	3670	3686	3926	874	28.6	573	17.1	240	6.5

(continued on next page)

TABLE 5: COMPARISON OF MINORITY ENROLLMENT, BY GROUP AND CAMPUS, FALL QUARTERS 1981 AND 1986 THROUGH 1990

Minority Group/Campus	1981	1986	1987	1988	1989	1990	Increase In Attendance 1981-1990		Increase In Attendance 1986-1990		Increase In Attendance 1989-1990	
							N	%	N	%	N	%
All Minority Students												
Crookston	33	22	17	23	28	41	8	24.2	19	86.4	13	46.4
Duluth	148	177	193	215	263	255	107	72.3	78	44.1	-8	-3.0
Morris	85	151	145	131	143	145	60	70.6	-6	-4.0	2	1.4
Twin Cities	2786	2993	3121	3296	3240	3470	684	24.6	477	15.9	230	7.1
Waseca	0	10	7	5	12	15	15	-	5	50.0	3	25.0
Total University	3052	3353	3483	3670	3686	3926	874	28.6	573	17.1	240	6.5
All Other Students												
Crookston	1128	1191	1119	1198	1260	1295	167	14.8	104	8.7	35	2.8
Duluth	7376	7124	7172	7320	7557	7668	292	3.9	544	7.6	111	1.5
Morris	1605	1623	1822	1890	1898	1876	271	16.9	253	15.6	-22	-1.2
Twin Cities	44647	42013	41172	39275	37776	37502	-7145	-16.0	-4511	-10.7	-274	-0.7
Waseca	1101	1139	1156	1164	1162	1027	-74	-6.7	-112	-9.8	-135	-11.6
Total University	55857	53090	52441	50847	49653	49368	-6489	-11.6	-3722	-7.0	-285	-0.6
All Students												
Crookston	1161	1213	1136	1221	1288	1336	175	15.1	123	10.1	48	3.7
Duluth	7524	7301	7365	7535	7820	7923	399	5.3	622	8.5	103	1.3
Morris	1690	1774	1967	2021	2041	2021	331	19.6	247	13.9	-20	-1.0
Twin Cities	47433	45006	44293	42571	41016	40972	-6461	-13.6	-4034	-9.0	-44	-0.1
Waseca	1101	1149	1163	1169	1174	1042	-59	-5.4	-107	-9.3	-132	-11.2
Total University	58909	56443	55924	54517	53339	53294	-5615	-9.5	-3149	-5.6	-45	-0.1