

100-
Adm

MINORITY ENROLLMENT REPORT

FALL QUARTER 1989

UNIVERSITY OF MINNESOTA

OFFICE OF STUDENT DEVELOPMENT

STUDENT SUPPORT SERVICES

**Andrew Huang
Office of the Registrar
150 Williamson Hall
625-1530
October 30, 1989**

Table of Contents

	<u>Page</u>
Notes	1
Definitions	2

Figures

1 Enrollment Trends By Minority Group, U of M, Fall Quarters 1972 Through 1989	3
2 New Minority Students By Group, U of M, Fall Quarter 1989	17
3 Minority Enrollment by Group and Level, Twin Cities Campus, U of M, Fall Quarter 1989	25
4 Percentage Change of Minority Students by Group, U of M, 1985 vs 1989 AND 1988 vs 1989.	31

Tables

1A Minority Enrollment, By Group and Campus, Fall Quarter 1987, 1988 and 1989	4
1B Minority Enrollment, By Group and College, <u>Twin Cities Campus</u> , Fall Quarters 1987, 1988 and 1989	5
1C Minority Enrollment, By Group and College, <u>Duluth Campus</u> , Fall Quarters 1987, 1988 and 1989	9
2 Minority Enrollment, By Group, Sex and Campus/College, Fall Quarters 1987, 1988 and 1989	10
3 Minority Enrollment, By Group, Registration Status (New vs. Returning), and Campus/College, Fall Quarters 1987, 1988 and 1989.	18
4 Minority Enrollment, By Group, Campus and Student Level, Fall Quarters 1987, 1988 and 1989	26
5 Comparison of Minority Enrollment, By Group and Campus, Fall Quarter 1985 Through 1989	32

NOTES

1. All data in the report are based on the number of students registered as of the end of the second week of classes.
2. Ethnic background information of students comes either from application forms for admission or request for update of student ethnic data during fall registration. In both cases the supplying of ethnic data is optional.
3. Data for the years other than 1989 are taken from the 1988 Fall Quarter Minority Enrollment Report of the University of Minnesota.
4. The descriptions of the ethnic categories in the report are the latest version used by the United States Department of Education.
5. Data of undergraduate students majoring in Architecture, Landscape Architecture and Environmental Design for this fall are reported under the College of Architecture and Landscape Architecture (Architecture/Land. Arch.), a new collegiate unit of the Twin Cities Campus created in July 1989. In previous years, these students were counted as students of either the Institute of Technology, College of Liberal Arts or College of Agriculture dependent upon the student's major and the unit students registered for classes.
6. Data for College of Forestry are reported under its new name - College of Natural Resources.
7. Table 2 (Minority Enrollment by Sex), Table 3 (Minority Enrollment: New vs Returning) and Table 4 (Minority Enrollment By Student Level) have been expanded to report three years of data instead of two years.

DEFINITIONS

ETHNIC BACKGROUND OF STUDENTS

Black, Non-Hispanic—A person having origins in any of the black racial groups of Africa (except those of Hispanic origin).

American Indian or Alaskan Native—A person having origins in any of the original peoples of North America, and who maintains cultural identification through tribal affiliation or community recognition.

Asian or Pacific Islander—A person having origins in any of the original peoples of the far East, Southeast Asia, the Indian subcontinent, or the Pacific Islands. This area includes, for example, China, Japan, Korea, the Philippine Islands, and Samoa.

Hispanic—A person of Mexican, Puerto Rican, Cuban, Central or South American, or other Spanish culture or origin, regardless of race.

All other students—Includes primarily the following two categories:

White, Non-Hispanic—A person having origins in any of the original peoples of Europe, North Africa or in the Middle East (except those of Hispanic origin).

International Student (Foreign Student)—i.e., Non-Resident Alien: a person who is not a citizen or national of the United States and who is in this country on a temporary basis and does not have the right to remain indefinitely. Resident Aliens, who are not citizens or nationals of the United States and who have been lawfully admitted for permanent residence (and who hold alien registration receipt cards—Form I-151) are included in the appropriate racial/ethnic categories along with United States citizens.

STUDENT LEVEL

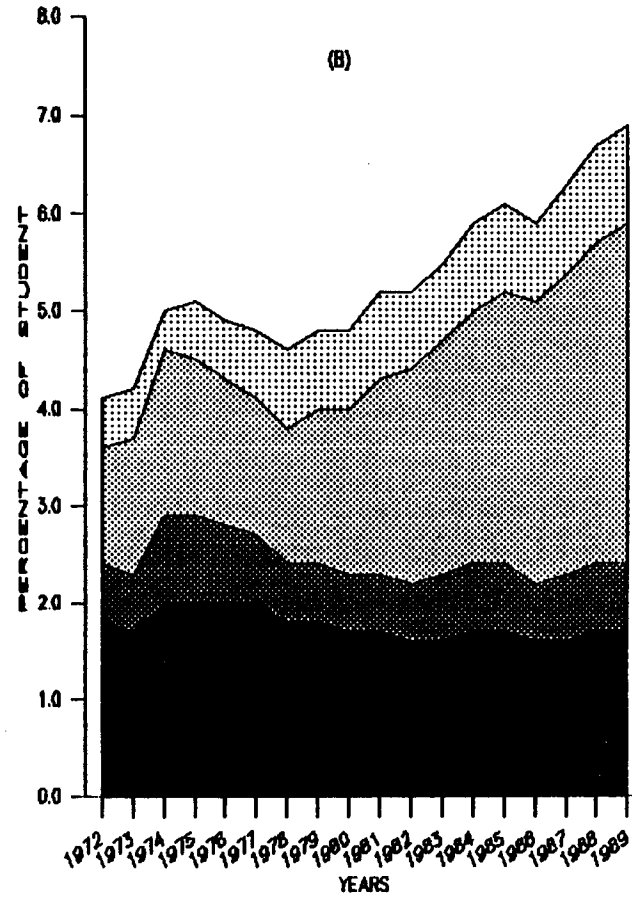
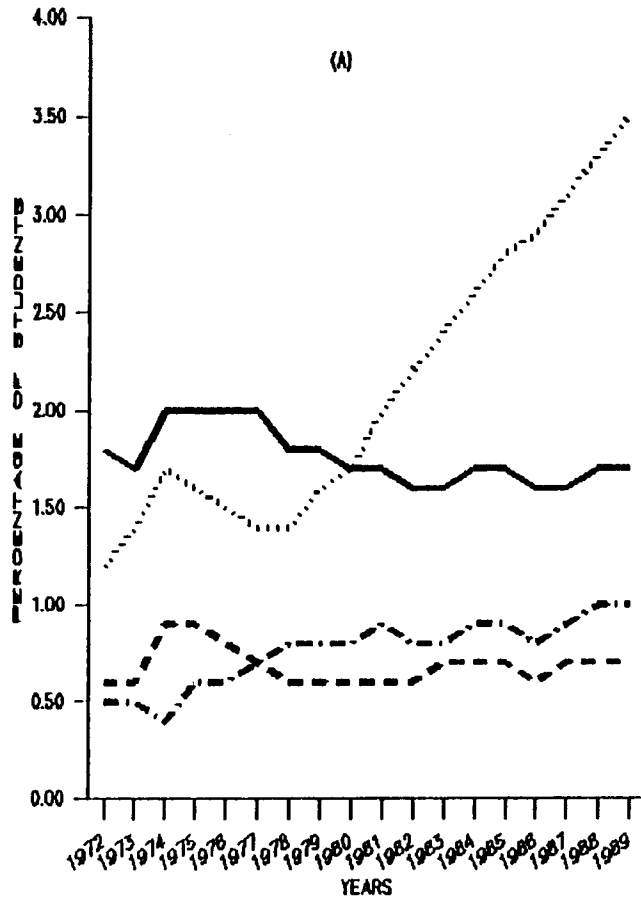
Undergraduate Students—Those who have met all requirements for admission to the University and who pursue programs which lead to either bachelor's or associate degrees.

First Professional Students—Those who are enrolled in a professional school or program which requires at least 2 academic years of college work for entrance and a total of at least 6 years for a degree.

Graduate Students—Those who hold the bachelor's or first-professional degree or equivalent and are working toward a master's or doctor's degree.

Unclassified Students—Those who are not candidates for a degree or other formal award and who are taking courses in regular classes with other students.

Figure 1: Enrollment Trends By Minority Group
 University Of Minnesota
 Fall Quarters, 1972 Through 1989



Minority Group
 — Black — American Indian ···· Asian - - - Hispanic

Minority Group
 [Hispanic] [Asian] [American Indian] [Black]

TABLE 1A: MINORITY ENROLLMENT^a, BY GROUP AND CAMPUS, FALL QUARTERS 1987, 1988 AND 1989

Campus	Minority Group										Total Minority Students	ALL Other Students		TOTAL ALL STUDENTS	
	Black Non- Hispanic		American Indian or Alaskan		Asian or Pacific Islander		Hispanic		N	%		N	%	N	%
	N	%	N	%	N	%	N	%							
Crookston															
1987	0	0.0	5	0.4	1	0.1	11	1.0	17	1.5	1119	98.5	1136	100.0	
1988	3	0.2	6	0.5	2	0.2	12	1.0	23	1.9	1198	98.1	1221	100.0	
1989	4	0.3	5	0.4	2	0.2	17	1.3	28	2.2	1260	97.8	1288	100.0	
Duluth															
1987	41	0.6	76	1.0	55	0.7	21	0.3	193	2.6	7172	97.4	7365	100.0	
1988	53	0.7	80	1.1	55	0.7	27	0.4	215	2.9	7320	97.1	7535	100.0	
1989	54	0.7	84	1.1	95	1.2	30	0.4	263	3.4	7557	96.6	7820	100.0	
Morris															
1987	59	3.0	35	1.8	26	1.3	25	1.3	145	7.4	1822	92.6	1967	100.0	
1988	41	2.0	39	1.9	33	1.7	18	0.9	131	6.5	1890	93.5	2021	100.0	
1989	37	1.8	43	2.1	43	2.1	20	1.0	143	7.0	1898	93.0	2041	100.0	
Twin Cities															
1987	811	1.8	253	0.6	1638	3.7	419	0.9	3121	7.0	41172	93.0	44293	100.0	
1988	857	2.0	251	0.6	1711	4.0	477	1.1	3296	7.7	39275	92.3	42571	100.0	
1989	828	2.0	236	0.6	1716	4.2	460	1.1	3240	7.9	37776	92.1	41016	100.0	
Waseca															
1987	4	0.3	1	0.1	1	0.1	1	0.1	7	0.6	1156	99.4	1163	100.0	
1988	2	0.2	1	0.1	2	0.2	0	0.0	5	0.5	1164	99.5	1169	100.0	
1989	9	0.8	0	0.0	3	0.2	0	0.0	12	1.0	1162	99.0	1174	100.0	
Total University															
1987	915	1.6	370	0.7	1721	3.1	477	0.9	3483	6.3	52441	93.8	55924	100.0	
1988	956	1.7	377	0.7	1803	3.3	534	1.0	3670	6.7	50847	93.3	54517	100.0	
1989	932	1.7	368	0.7	1859	3.5	527	1.0	3686	6.9	49653	93.1	53339	100.0	

^a Minority students of the University System for Fall 1989 are based on 95.4 percent of the total student population who had provided ethnic background information through the collection methods described in Notes on page 1. The same statistics for each campus are as follows: Crookston (99.6 percent), Duluth (95.2 percent), Morris (99.5 percent), Twin Cities (95.0 percent) and Waseca (99.7 percent).

TABLE 1B: MINORITY ENROLLMENT^a, BY GROUP AND COLLEGE, TWIN CITIES CAMPUS, FALL QUARTERS 1987, 1988 AND 1989

College	Minority Group								Total Minority Students	ALL Other Students	TOTAL ALL STUDENTS			
	Black Non- Hispanic		American Indian or Alaskan		Asian or Pacific Islander		Hispanic							
	N	%	N	%	N	%	N	%				N	%	
Agriculture														
1987	6	0.8	1	0.1	5	0.6	2	0.3	14	1.8	760	98.2	774	100.0
1988	9	1.2	0	0.0	6	0.8	4	0.5	19	2.5	728	97.5	747	100.0
1989	10	1.4	1	0.1	7	1.0	3	0.5	21	3.0	677	97.0	698	100.0
Architecture/Land. Arch.^b														
1987					Not Available									
1988					Not Available									
1989	3	1.0	0	0.0	7	2.5	2	0.7	12	4.2	276	95.8	288	100.0
Biological Sciences														
1987	9	2.7	0	0.0	13	3.9	3	0.9	25	7.5	305	92.5	330	100.0
1988	5	1.6	3	0.9	11	3.5	6	1.9	25	7.9	290	92.1	315	100.0
1989	3	1.0	1	0.3	14	4.5	5	1.5	23	7.3	290	92.7	313	100.0
Education														
1987	26	1.2	2	0.1	14	0.7	11	0.5	53	2.5	2044	97.5	2097	100.0
1988	24	1.3	6	0.3	14	0.7	10	0.5	54	2.8	1874	97.2	1928	100.0
1989	16	1.0	8	0.5	20	1.2	9	0.5	53	3.2	1621	96.8	1674	100.0
General College														
1987	189	7.0	63	2.3	186	6.9	61	2.3	499	18.5	2201	81.5	2700	100.0
1988	216	8.5	67	2.7	184	7.3	69	2.7	536	21.2	1999	78.8	2535	100.0
1989	198	8.8	72	3.3	172	7.6	59	2.6	501	22.3	1750	77.7	2251	100.0
Graduate														
1987	84	1.0	35	0.4	139	1.7	66	0.8	324	3.9	7951	96.1	8275	100.0
1988	82	1.0	30	0.4	124	1.5	63	0.8	299	3.7	7865	96.3	8164	100.0
1989	95	1.2	20	0.2	137	1.7	64	0.8	316	3.9	7794	96.1	8110	100.0

(continued on next page)

TABLE 1B: MINORITY ENROLLMENT^a, BY GROUP AND COLLEGE, TWIN CITIES CAMPUS, FALL QUARTERS 1987, 1988 AND 1989

College	Minority Group								Total Minority Students	ALL Other Students		TOTAL ALL STUDENTS		
	Black Non- Hispanic		American Indian or Alaskan		Asian or Pacific Islander		Hispanic			N	%	N	%	
	N	%	N	%	N	%	N	%						
Health Sciences														
Dental Hygiene														
1987	1	2.3	1	2.3	0	0.0	1	2.1	3	6.3	45	93.7	48	100.0
1988	1	2.0	1	2.0	3	5.8	1	2.0	6	11.8	45	88.2	51	100.0
1989	0	0.0	0	0.0	5	9.1	1	1.8	6	10.9	49	89.1	55	100.0
Dentistry														
1987	3	0.7	1	0.2	15	3.7	2	0.5	21	5.1	387	94.9	408	100.0
1988	1	0.3	2	0.5	16	4.2	2	0.5	21	5.5	360	94.5	381	100.0
1989	0	0.0	1	0.4	13	3.7	6	1.7	20	5.8	327	94.2	347	100.0
Medical School														
1987	16	0.8	9	0.5	54	2.8	20	1.1	99	5.2	1813	94.8	1912	100.0
1988	23	1.2	8	0.4	98	5.0	28	1.4	157	8.0	1806	92.0	1963	100.0
1989	24	1.2	8	0.4	96	5.0	25	1.3	153	7.9	1775	92.1	1928	100.0
Medical Technology														
1987	0	0.0	0	0.0	4	7.7	0	0.0	4	7.7	48	92.3	52	100.0
1988	2	3.5	0	0.0	7	12.3	0	0.0	9	15.8	48	84.2	57	100.0
1989	2	2.4	0	0.0	7	8.6	1	1.2	10	12.2	72	87.8	82	100.0
Mortuary Science														
1987	0	0.0	0	0.0	0	0.0	0	0.0	0	0.0	50	100.0	50	100.0
1988	1	2.0	1	2.0	0	0.0	2	3.9	4	7.9	47	92.1	51	100.0
1989	0	0.0	1	1.7	0	0.0	0	0.0	1	1.7	59	98.3	60	100.0
Nursing														
1987	3	1.0	0	0.0	3	1.0	2	0.6	8	2.6	301	97.4	309	100.0
1988	2	1.0	0	0.0	2	1.1	2	1.0	6	3.1	187	96.9	193	100.0
1989	1	0.5	0	0.0	4	2.1	0	0.0	5	2.6	185	97.4	190	100.0
Occupational Therapy														
1987	0	0.0	0	0.0	1	1.3	0	0.0	1	1.3	75	98.7	76	100.0
1988	0	0.0	1	1.3	1	1.3	0	0.0	2	2.6	77	97.4	79	100.0
1989	0	0.0	0	0.0	1	1.3	0	0.0	1	1.3	75	98.7	76	100.0

(continued on next page)

TABLE 1B: MINORITY ENROLLMENT^a, BY GROUP AND COLLEGE, TWIN CITIES CAMPUS, FALL QUARTERS 1987, 1988 AND 1989

College	Minority Group								Total Minority Students		ALL Other Students		TOTAL ALL STUDENTS	
	Black Non- Hispanic		American Indian or Alaskan		Asian or Pacific Islander		Hispanic							
	N	%	N	%	N	%	N	%	N	%	N	%		
Pharmacy														
1987	1	0.3	0	0.0	13	4.0	1	0.3	15	4.6	314	95.4	329	100.0
1988	2	0.6	0	0.0	16	4.9	1	0.3	19	5.8	307	94.2	326	100.0
1989	4	1.2	1	0.3	14	4.0	2	0.6	21	6.1	322	93.9	343	100.0
Physical Therapy														
1987	0	0.0	0	0.0	0	0.0	0	0.0	0	0.0	59	100.0	59	100.0
1988	1	1.6	0	0.0	0	0.0	0	0.0	1	1.6	60	98.4	61	100.0
1989	0	0.0	0	0.0	1	1.6	0	0.0	1	1.6	60	98.4	61	100.0
Public Health														
1987	3	1.3	2	0.9	1	0.4	2	0.9	8	3.5	223	96.5	231	100.0
1988	3	1.2	1	0.4	5	2.1	3	1.2	12	4.9	233	95.1	245	100.0
1989	3	1.1	0	0.0	4	1.5	2	0.7	9	3.3	266	96.7	275	100.0
Veterinary Medicine														
1987	2	0.7	1	0.4	2	0.7	2	0.7	7	2.5	278	97.5	285	100.0
1988	2	0.7	1	0.4	4	1.4	3	1.1	10	3.6	266	96.4	276	100.0
1989	1	0.4	1	0.4	3	1.1	4	1.6	9	3.5	247	96.5	256	100.0
SUBTOTAL Hlth. Sci.														
1987	29	0.8	14	0.4	93	2.4	30	0.8	166	4.4	3593	95.6	3759	100.0
1988	38	1.0	15	0.4	152	4.1	42	1.2	247	6.7	3436	93.3	3683	100.0
1989	35	1.0	12	0.3	148	4.0	41	1.1	236	6.4	3437	93.6	3673	100.0
Home Economics														
1987	35	2.6	5	0.4	50	3.8	1	0.1	91	6.9	1231	93.1	1322	100.0
1988	30	2.5	6	0.5	48	4.0	8	0.6	92	7.6	1118	92.4	1210	100.0
1989	27	2.4	6	0.5	49	4.4	6	0.5	88	7.8	1041	92.2	1129	100.0
Law School														
1987	20	2.6	6	0.8	15	1.9	15	1.9	56	7.2	715	92.8	771	100.0
1988	21	2.8	7	0.9	31	4.1	17	2.2	76	10.0	687	90.0	763	100.0
1989	31	3.9	8	1.0	37	4.6	22	2.8	98	12.3	698	87.7	796	100.0

(continued on next page)

TABLE 1B: MINORITY ENROLLMENT^a, BY GROUP AND COLLEGE, TWIN CITIES CAMPUS, FALL QUARTERS 1987, 1988 AND 1989

College	Minority Group													
	Black Non-Hispanic		American Indian or Alaskan		Asian or Pacific Islander		Hispanic		Total Minority Students		ALL Other Students		TOTAL ALL STUDENTS	
	N	%	N	%	N	%	N	%	N	%	N	%	N	%
Liberal Arts														
1987	303	1.8	101	0.6	647	3.8	180	1.0	1231	7.2	15851	92.8	17082	100.0
1988	317	1.9	94	0.6	655	4.0	202	1.2	1268	7.7	15242	92.3	16510	100.0
1989	321	2.0	84	0.5	644	4.0	197	1.3	1246	7.8	14689	92.2	15935	100.0
Management														
1987	20	1.5	2	0.1	43	3.1	16	1.2	81	5.9	1303	94.1	1384	100.0
1988	20	1.8	3	0.3	47	4.2	14	1.3	84	7.6	1017	92.4	1101	100.0
1989	18	1.9	7	0.6	47	5.0	11	1.2	83	8.7	866	91.3	949	100.0
Natural Resources														
1987	0	0.0	2	0.7	0	0.0	0	0.0	2	0.7	282	99.3	284	100.0
1988	1	0.3	0	0.0	1	0.3	1	0.3	3	1.0	286	99.0	289	100.0
1989	1	0.3	3	0.9	3	0.9	1	0.3	8	2.4	328	97.6	336	100.0
Technology														
1987	76	1.4	20	0.4	430	8.0	32	0.6	558	10.4	4821	89.6	5379	100.0
1988	85	1.7	18	0.4	435	8.4	38	0.7	576	11.2	4574	88.8	5150	100.0
1989	63	1.3	12	0.3	431	9.1	36	0.8	542	11.5	4176	88.5	4718	100.0
University College														
1987	14	10.3	2	1.5	3	2.2	2	1.5	21	15.5	115	84.5	136	100.0
1988	9	5.1	2	1.2	3	1.7	3	1.7	17	9.7	159	90.3	176	100.0
1989	7	4.8	2	1.4	0	0.0	4	2.7	13	8.9	133	91.1	146	100.0

^a See footnote at end of Table 1A.^b See Notes on page 1.

TABLE 1C: MINORITY ENROLLMENT^a, BY GROUP AND COLLEGE, DULUTH CAMPUS, FALL QUARTERS 1987, 1988 AND 1989

College	Minority Group								Total Minority Students		ALL Other Students		TOTAL ALL STUDENTS	
	Black Non- Hispanic		American Indian or Alaskan		Asian or Pacific Islander		Hispanic							
	N	%	N	%	N	%	N	%	N	%	N	%		
Business & Economics														
1987	6	0.4	5	0.3	4	0.3	5	0.3	20	1.3	1511	98.7	1531	100.0
1988	8	0.5	9	0.6	7	0.5	2	0.1	26	1.7	1468	98.3	1494	100.0
1989	8	0.5	8	0.5	16	1.0	3	0.3	35	2.3	1503	97.7	1538	100.0
Educ. & Human Serv.														
1987	7	0.5	21	1.4	6	0.4	3	0.2	37	2.5	1420	97.5	1457	100.0
1988	9	0.7	14	1.0	6	0.4	4	0.3	33	2.4	1365	97.6	1398	100.0
1989	10	0.7	10	0.7	8	0.5	6	0.4	34	2.3	1440	97.7	1474	100.0
Fine Arts														
1987	0	0.0	3	1.1	5	1.8	1	0.3	9	3.2	273	96.8	282	100.0
1988	2	0.7	4	1.3	3	1.0	1	0.3	10	3.3	289	96.7	299	100.0
1989	2	0.6	7	2.3	5	1.6	2	0.6	16	5.1	297	94.9	313	100.0
Graduate														
1987	1	0.4	3	1.3	0	0.0	1	0.4	5	2.1	226	97.9	231	100.0
1988	1	0.4	5	1.8	0	0.0	1	0.4	7	2.6	260	97.4	267	100.0
1989	0	0.0	5	1.9	0	0.0	1	0.4	6	2.3	253	97.7	259	100.0
Liberal Arts														
1987	20	0.9	26	1.2	11	0.5	5	0.2	62	2.8	2131	97.2	2193	100.0
1988	19	0.8	35	1.5	13	0.5	6	0.2	73	3.0	2348	97.0	2421	100.0
1989	19	0.8	38	1.5	32	1.3	8	0.3	97	3.9	2420	96.1	2517	100.0
Medicine														
1987	0	0.0	2	2.2	1	1.1	1	1.1	4	4.4	88	95.6	92	100.0
1988	1	1.1	1	1.1	0	0.0	1	1.1	3	3.4	84	96.6	87	100.0
1989	0	0.0	0	0.0	2	2.1	0	0.0	2	2.1	92	97.9	94	100.0
Science & Engineering														
1987	7	0.4	16	1.0	28	1.8	5	0.3	56	3.5	1523	96.5	1579	100.0
1988	13	0.8	12	0.8	26	1.6	12	0.8	63	4.0	1506	96.0	1569	100.0
1989	15	0.9	16	1.0	32	2.0	10	0.6	73	4.5	1552	95.5	1625	100.0

^a See footnote at end of Table 1A.

TABLE 2: MINORITY ENROLLMENT^a, BY GROUP, SEX, AND CAMPUS/COLLEGE, FALL QUARTERS 1987, 1988 AND 1989

Campus/College	Minority Group														
	Black Non-Hispanic		American Indian or Alaskan		Asian or Pacific Islander		Hispanic		Total Minority Students		ALL Other Students		TOTAL ALL STUDENTS		
	M	F	M	F	M	F	M	F	M	F	M	F	M	F	
Crookston															
1987	N	0	0	4	1	1	0	4	7	9	8	532	587	541	595
	%	(0.0)	(0.0)	(0.7)	(0.2)	(0.2)	(0.0)	(0.7)	(1.2)	(1.6)	(1.4)	(98.4)	(98.6)	(100.0)	(100.0)
1988	N	1	2	2	4	0	2	5	7	8	15	495	703	503	718
	%	(0.2)	(0.3)	(0.4)	(0.5)	(0.0)	(0.3)	(1.0)	(1.0)	(1.6)	(2.1)	(98.4)	(97.9)	(100.0)	(100.0)
1989	N	2	2	2	1	0	2	5	12	9	17	538	724	547	741
	%	(0.4)	(0.3)	(0.4)	(0.2)	(0.0)	(0.3)	(0.9)	(1.6)	(1.7)	(2.3)	(98.3)	(97.7)	(100.0)	(100.0)
Duluth															
Business & Economics															
1987		4	2	4	1	3	1	3	2	14	6	903	608	917	614
1988		5	3	5	4	3	4	0	2	13	13	897	571	910	584
1989		4	4	4	4	7	9	2	1	17	18	930	573	947	591
Educ. & Human Serv.															
1987		4	3	12	9	3	3	1	2	20	17	503	917	523	934
1988		7	2	10	4	2	4	1	3	20	13	488	877	508	890
1989		7	3	5	5	1	7	4	2	17	17	485	955	502	972
Fine Arts															
1987		0	0	2	1	3	2	0	1	5	4	130	143	135	147
1988		2	0	3	1	2	1	0	1	7	3	120	169	127	172
1989		1	1	2	5	2	3	1	1	6	10	122	175	128	185
Graduate															
1987		1	0	1	2	0	0	0	1	2	3	117	109	119	112
1988		1	0	2	3	0	0	0	1	3	4	123	137	126	141
1989		0	0	1	4	0	0	0	1	1	5	103	150	104	155

(continued on next page)

TABLE 2: MINORITY ENROLLMENT^a, BY GROUP, SEX, AND CAMPUS/COLLEGE, FALL QUARTERS 1987, 1988 AND 1989

Campus/College	Minority Group								Total Minority Students	ALL Other Students		TOTAL ALL STUDENTS		
	Black Non- Hispanic		American Indian or Alaskan		Asian or Pacific Islander		Hispanic			M	F	M	F	
	M	F	M	F	M	F	M	F						
Liberal Arts														
1987	10	10	9	17	6	5	0	5	25	37	1007	1124	1032	1161
1988	7	12	10	25	7	6	3	3	27	46	1049	1299	1076	1345
1989	7	12	13	25	13	19	6	2	39	58	1099	1321	1138	1379
Medicine														
1987	0	0	2	0	0	1	1	0	3	1	59	29	62	30
1988	0	1	1	0	0	0	1	0	2	1	44	40	46	41
1989	0	0	0	0	1	1	0	0	1	1	44	48	45	49
Science & Engineering														
1987	5	2	6	10	22	6	3	2	36	20	1096	427	1132	447
1988	9	4	7	5	20	6	9	3	45	18	1110	396	1155	414
1989	11	4	7	9	25	7	5	5	48	25	1148	404	1196	429
TOTAL Duluth														
1987 N	<u>24</u>	<u>17</u>	<u>36</u>	<u>40</u>	<u>37</u>	<u>18</u>	<u>8</u>	<u>13</u>	<u>105</u>	<u>88</u>	<u>3815</u>	<u>3357</u>	<u>3920</u>	<u>3445</u>
%	(0.6)	(0.5)	(0.9)	(1.2)	(1.0)	(0.5)	(0.2)	(0.4)	(2.7)	(2.6)	(97.3)	(97.4)	(100.0)	(100.0)
1988 N	<u>31</u>	<u>22</u>	<u>38</u>	<u>42</u>	<u>34</u>	<u>21</u>	<u>14</u>	<u>13</u>	<u>117</u>	<u>98</u>	<u>3831</u>	<u>3489</u>	<u>3948</u>	<u>3587</u>
%	(0.8)	(0.6)	(1.0)	(1.2)	(0.9)	(0.6)	(0.3)	(0.3)	(3.0)	(2.7)	(97.0)	(97.3)	(100.0)	(100.0)
1989 N	<u>30</u>	<u>24</u>	<u>32</u>	<u>52</u>	<u>49</u>	<u>46</u>	<u>18</u>	<u>12</u>	<u>129</u>	<u>134</u>	<u>3931</u>	<u>3626</u>	<u>4060</u>	<u>3760</u>
%	(0.7)	(0.6)	(0.8)	(1.4)	(1.2)	(1.2)	(0.5)	(0.3)	(3.2)	(3.6)	(96.8)	(96.4)	(100.0)	(100.0)
Morris														
1987 N	<u>21</u>	<u>38</u>	<u>15</u>	<u>20</u>	<u>20</u>	<u>6</u>	<u>17</u>	<u>8</u>	<u>73</u>	<u>72</u>	<u>838</u>	<u>984</u>	<u>911</u>	<u>1056</u>
%	(2.3)	(3.6)	(1.6)	(1.9)	(2.2)	(0.6)	(1.9)	(0.7)	(8.0)	(6.8)	(92.0)	(93.2)	(100.0)	(100.0)
1988 N	<u>15</u>	<u>26</u>	<u>15</u>	<u>24</u>	<u>21</u>	<u>12</u>	<u>11</u>	<u>7</u>	<u>62</u>	<u>69</u>	<u>848</u>	<u>1042</u>	<u>910</u>	<u>1111</u>
%	(1.7)	(2.3)	(1.6)	(2.2)	(2.3)	(1.1)	(1.2)	(0.6)	(6.8)	(6.2)	(93.2)	(93.8)	(100.0)	(100.0)
1989 N	<u>16</u>	<u>21</u>	<u>21</u>	<u>22</u>	<u>24</u>	<u>19</u>	<u>10</u>	<u>10</u>	<u>71</u>	<u>72</u>	<u>855</u>	<u>1043</u>	<u>926</u>	<u>1115</u>
%	(1.7)	(1.9)	(2.3)	(2.0)	(2.6)	(1.7)	(1.1)	(0.9)	(7.7)	(6.5)	(92.3)	(93.5)	(100.0)	(100.0)

(continued on next page)

TABLE 2: MINORITY ENROLLMENT^a, BY GROUP, SEX, AND CAMPUS/COLLEGE, FALL QUARTERS 1987, 1988 AND 1989

Campus/College	Minority Group								Total Minority Students	ALL Other Students		TOTAL ALL STUDENTS		
	Black Non- Hispanic		American Indian or Alaskan		Asian or Pacific Islander		Hispanic			M	F	M	F	
	M	F	M	F	M	F	M	F						
Twin Cities														
Agriculture														
1987	6	0	1	0	5	0	0	2	12	2	481	279	493	281
1988	5	4	0	0	5	1	2	2	12	7	470	258	482	265
1989	6	4	0	1	6	1	1	2	13	8	401	276	414	284
Architecture/Land. Arch.^b														
1987	Not Available													
1988	Not Available													
1989	3	0	0	0	5	2	1	1	9	3	190	86	199	89
Biological Science														
1987	5	4	0	0	8	5	1	2	14	11	172	133	186	144
1988	2	3	1	2	5	6	2	4	10	15	161	129	171	144
1989	1	2	0	1	5	9	1	4	7	16	146	144	153	160
Education														
1987	7	19	1	1	3	11	3	8	14	39	624	1420	638	1459
1988	12	12	2	4	3	11	5	5	22	32	569	1305	591	1337
1989	8	8	2	6	7	13	1	8	18	35	437	1184	455	1219
General College														
1987	96	93	28	35	127	59	34	27	285	214	1266	935	1551	1149
1988	100	116	29	38	117	67	41	28	287	249	1100	899	1387	1148
1989	92	106	26	46	100	72	30	29	248	253	896	854	1144	1107
Graduate School														
1987	46	38	13	22	85	54	32	34	176	148	4593	3358	4769	3506
1988	46	36	14	16	82	42	37	26	179	120	4515	3350	4694	3470
1989	48	47	9	11	91	46	35	29	183	133	4477	3317	4660	3450

(continued on next page)

TABLE 2: MINORITY ENROLLMENT^a, BY GROUP, SEX, AND CAMPUS/COLLEGE, FALL QUARTERS 1987, 1988 AND 1989

Campus/College	Minority Group										ALL Other Students		TOTAL ALL STUDENTS	
	Black Non-Hispanic		American Indian or Alaskan		Asian or Pacific Islander		Hispanic		Total Minority Students		M	F	M	F
	M	F	M	F	M	F	M	F	M	F				
Health Sciences														
Dental Hygiene														
1987	0	1	0	1	0	0	0	1	0	3	1	44	1	47
1988	0	1	0	1	1	2	0	1	1	5	1	44	2	49
1989	0	0	0	0	1	4	0	1	1	5	0	49	1	54
Dentistry														
1987	1	2	1	0	8	7	2	0	12	9	273	114	285	123
1988	0	1	2	0	8	8	2	0	12	9	258	102	270	111
1989	0	0	1	0	8	5	4	2	13	7	231	96	244	103
Medical School														
1987	11	5	3	6	37	17	14	6	65	34	1150	663	1215	697
1988	16	7	3	5	63	35	15	13	97	60	1168	638	1265	698
1989	17	7	4	4	65	31	14	11	100	53	1112	663	1212	716
Medical Technology														
1987	0	0	0	0	1	3	0	0	1	3	9	39	10	42
1988	2	0	0	0	3	4	0	0	5	4	13	35	18	39
1989	2	0	0	0	3	4	0	1	5	5	17	55	22	60
Mortuary Science														
1987	0	0	0	0	0	0	0	0	0	0	35	15	35	15
1988	0	1	1	0	0	0	0	2	1	3	36	11	37	14
1989	0	0	1	0	0	0	0	0	1	0	42	17	43	17
Nursing														
1987	0	3	0	0	0	3	0	2	0	8	24	277	24	285
1988	0	2	0	0	1	1	0	2	1	5	14	173	15	178
1989	0	1	0	0	0	4	0	0	0	5	17	168	17	173
Occupational Therapy														
1987	0	0	0	0	0	1	0	0	0	1	5	70	5	71
1988	0	0	0	1	0	1	0	0	0	2	8	69	8	71
1989	0	0	0	0	0	1	0	0	0	1	7	68	7	69

(continued on next page)

TABLE 2: MINORITY ENROLLMENT^a, BY GROUP, SEX, AND CAMPUS/COLLEGE, FALL QUARTERS 1987, 1988 AND 1989

Campus/College	Minority Group								Total Minority Students	ALL Other Students		TOTAL ALL STUDENTS		
	Black Non- Hispanic		American Indian or Alaskan		Asian or Pacific Islander		Hispanic			M	F	M	F	
	M	F	M	F	M	F	M	F						
Pharmacy														
1987	0	1	0	0	3	10	0	1	3	12	125	189	128	201
1988	1	1	0	0	5	11	0	1	6	13	112	195	118	208
1989	2	2	1	0	4	10	0	2	7	14	121	201	128	215
Physical Therapy														
1987	0	0	0	0	0	0	0	0	0	0	20	39	20	39
1988	0	1	0	0	0	0	0	0	0	1	15	45	15	46
1989	0	0	0	0	0	1	0	0	0	1	7	53	7	54
Public Health														
1987	0	3	0	2	0	1	0	2	0	8	67	156	67	164
1988	2	1	0	1	2	3	2	1	6	6	72	161	78	167
1989	1	2	0	0	0	4	1	1	2	7	80	186	82	193
Veterinary Medicine														
1987	0	2	1	0	0	2	1	1	2	5	134	144	136	149
1988	0	2	1	0	0	4	1	2	2	8	122	144	124	152
1989	0	1	0	1	0	3	1	3	1	8	97	150	98	158
SUBTOTAL Hlth Sci.														
1987	12	17	5	9	49	44	17	13	83	83	1843	1750	1926	1833
1988	21	17	7	8	83	69	20	22	131	116	1819	1617	1950	1733
1989	22	13	7	5	81	67	20	21	130	106	1731	1706	1861	1812
Home Economics														
1987	15	20	0	5	8	42	0	1	23	68	130	1101	153	1169
1988	9	21	1	5	6	42	1	7	17	75	121	997	138	1072
1989	8	19	2	4	9	40	4	2	23	65	125	916	148	981
Law School														
1987	12	8	2	4	12	3	12	3	38	18	419	296	457	314
1988	14	7	3	4	18	13	12	5	47	29	393	294	440	323
1989	18	13	1	7	21	16	13	9	53	45	387	311	440	356

(continued on next page)

TABLE 2: MINORITY ENROLLMENT^a, BY GROUP, SEX, AND CAMPUS/COLLEGE, FALL QUARTERS 1987, 1988 AND 1989

Campus/College	Minority Group								Total Minority Students	ALL Other Students		TOTAL ALL STUDENTS			
	Black Non- Hispanic		American Indian or Alaskan		Asian or Pacific Islander		Hispanic			M	F	M	F		
	M	F	M	F	M	F	M	F							
Liberal Arts															
1987	140	163	46	55	345	302	96	84	627	604	7618	8233	8245	8837	
1988	147	170	45	49	349	306	114	88	655	613	7209	8033	7864	8646	
1989	147	174	27	57	323	321	111	86	608	638	6850	7839	7458	8477	
Management															
1987	13	7	1	1	19	24	11	5	44	37	734	569	778	606	
1988	13	7	1	2	17	30	9	5	40	44	563	454	603	498	
1989	12	6	1	6	19	28	5	6	37	46	471	395	508	441	
Natural Resources															
1987	0	0	2	0	0	0	0	0	2	0	223	59	225	59	
1988	0	1	0	0	1	0	1	0	2	1	212	74	214	75	
1989	0	1	1	2	3	0	1	0	5	3	246	82	251	85	
Technology															
1987	50	26	16	4	337	93	26	6	429	129	3974	847	4403	976	
1988	60	25	14	4	334	101	29	9	437	139	3750	824	4187	963	
1989	47	16	9	3	331	100	29	7	416	126	3420	756	3836	882	
University College															
1987	10	4	0	2	1	2	1	1	12	9	47	68	59	77	
1988	7	2	1	1	1	2	2	1	11	6	69	90	80	96	
1989	5	2	2	0	0	0	1	3	8	5	59	74	67	79	
TOTAL Twin Cities															
1987	N	<u>412</u>	<u>399</u>	<u>115</u>	<u>138</u>	<u>999</u>	<u>639</u>	<u>233</u>	<u>186</u>	<u>1759</u>	<u>1362</u>	<u>22124</u>	<u>19048</u>	<u>23883</u>	<u>20410</u>
	%	(1.7)	(2.0)	(0.5)	(0.7)	(4.2)	(3.1)	(1.0)	(0.9)	(7.4)	(6.7)	(92.6)	(93.3)	(100.0)	(100.0)
1988	N	<u>436</u>	<u>421</u>	<u>118</u>	<u>133</u>	<u>1021</u>	<u>690</u>	<u>275</u>	<u>202</u>	<u>1850</u>	<u>1446</u>	<u>20951</u>	<u>18324</u>	<u>22801</u>	<u>19770</u>
	%	(1.9)	(2.1)	(0.5)	(0.7)	(4.5)	(3.5)	(1.2)	(1.0)	(8.1)	(7.3)	(91.9)	(92.7)	(100.0)	(100.0)
1989	N	<u>417</u>	<u>411</u>	<u>87</u>	<u>149</u>	<u>1001</u>	<u>715</u>	<u>253</u>	<u>207</u>	<u>1758</u>	<u>1482</u>	<u>19836</u>	<u>17940</u>	<u>21594</u>	<u>19422</u>
	%	(1.9)	(2.1)	(0.4)	(0.8)	(4.6)	(3.7)	(1.2)	(1.0)	(8.1)	(7.6)	(91.9)	(92.4)	(100.0)	(100.0)

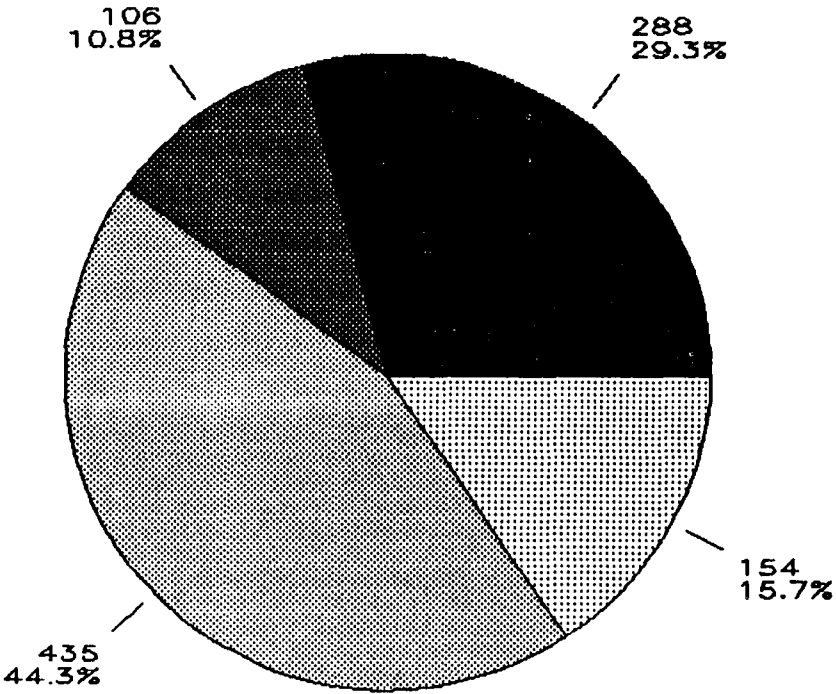
(continued on next page)

TABLE 2: MINORITY ENROLLMENT^a, BY GROUP, SEX, AND CAMPUS/COLLEGE, FALL QUARTERS 1987, 1988 AND 1989

Campus/College	Minority Group												TOTAL ALL STUDENTS		
	Black Non-Hispanic		American Indian or Alaskan		Asian or Pacific Islander		Hispanic		Total Minority Students		ALL Other Students		M	F	
	M	F	M	F	M	F	M	F	M	F	M	F			
Waseca															
1987	N	<u>1</u>	<u>3</u>	<u>0</u>	<u>1</u>	<u>1</u>	<u>0</u>	<u>0</u>	<u>1</u>	<u>2</u>	<u>5</u>	<u>435</u>	<u>721</u>	<u>437</u>	<u>726</u>
	%	(0.2)	(0.4)	(0.0)	(0.1)	(0.2)	(0.0)	(0.0)	(0.1)	(0.4)	(0.6)	(99.6)	(99.4)	(100.0)	(100.0)
1988	N	<u>2</u>	<u>0</u>	<u>0</u>	<u>1</u>	<u>1</u>	<u>1</u>	<u>0</u>	<u>0</u>	<u>3</u>	<u>2</u>	<u>390</u>	<u>774</u>	<u>393</u>	<u>776</u>
	%	(0.5)	(0.0)	(0.0)	(0.1)	(0.3)	(0.1)	(0.0)	(0.0)	(0.8)	(0.2)	(99.2)	(99.8)	(100.0)	(100.0)
1989	N	<u>8</u>	<u>1</u>	<u>0</u>	<u>0</u>	<u>1</u>	<u>2</u>	<u>0</u>	<u>0</u>	<u>9</u>	<u>3</u>	<u>482</u>	<u>680</u>	<u>491</u>	<u>683</u>
	%	(1.6)	(0.1)	(0.0)	(0.0)	(0.2)	(0.3)	(0.0)	(0.0)	(1.8)	(0.4)	(98.2)	(99.6)	(100.0)	(100.0)
TOTAL ENROLLMENT															
1987	N	<u>458</u>	<u>457</u>	<u>170</u>	<u>200</u>	<u>1058</u>	<u>663</u>	<u>262</u>	<u>215</u>	<u>1948</u>	<u>1535</u>	<u>27744</u>	<u>24697</u>	<u>29692</u>	<u>26232</u>
	%	(1.5)	(1.8)	(0.6)	(0.8)	(3.6)	(2.5)	(0.9)	(0.8)	(6.6)	(5.9)	(93.4)	(94.1)	(100.0)	(100.0)
1988	N	<u>485</u>	<u>471</u>	<u>173</u>	<u>204</u>	<u>1077</u>	<u>726</u>	<u>305</u>	<u>229</u>	<u>2040</u>	<u>1630</u>	<u>26515</u>	<u>24332</u>	<u>28555</u>	<u>25962</u>
	%	(1.7)	(1.8)	(0.6)	(0.8)	(3.8)	(2.8)	(1.1)	(0.9)	(7.2)	(6.3)	(92.8)	(93.7)	(100.0)	(100.0)
1989	N	<u>473</u>	<u>459</u>	<u>142</u>	<u>224</u>	<u>1075</u>	<u>784</u>	<u>286</u>	<u>241</u>	<u>1976</u>	<u>1708</u>	<u>25642</u>	<u>24013</u>	<u>27618</u>	<u>25721</u>
	%	(1.7)	(1.8)	(0.5)	(0.9)	(3.9)	(3.0)	(1.1)	(0.9)	(7.2)	(6.6)	(92.8)	(93.4)	(100.0)	(100.0)

^a See footnote at end of Table 1A.^b See Notes on page 1.

Figure 2: New Minority Students By Group
University Of Minnesota
Fall Quarter, 1989



Total New Minority Students = 983

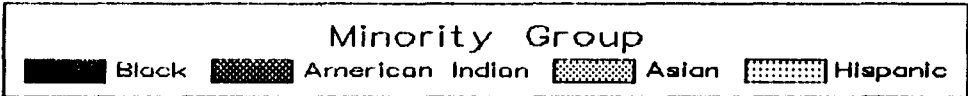


TABLE 3: MINORITY ENROLLMENT^a, BY GROUP, REGISTRATION STATUS (NEW vs. RETURNING)^b, AND CAMPUS/COLLEGE, FALL QUARTERS 1987, 1988 AND 1989 Page 18

Campus/College	Minority Group										ALL		TOTAL		
	Black Non-Hispanic		American Indian or Alaskan		Asian or Pacific Islander		Hispanic		Total Minority Students		Other Students		ALL STUDENTS		
	New	Return	New	Return	New	Return	New	Return	New	Return	New	Return	New	Return	
Crookston															
1987	N	<u>0</u>	<u>0</u>	<u>4</u>	<u>1</u>	<u>1</u>	<u>0</u>	<u>7</u>	<u>4</u>	<u>12</u>	<u>5</u>	<u>622</u>	<u>497</u>	<u>634</u>	<u>502</u>
	%	(0.0)	(0.0)	(0.6)	(0.2)	(0.2)	(0.0)	(1.1)	(0.8)	(1.9)	(1.0)	(98.1)	(99.0)	(100.0)	(100.0)
1988	N	<u>2</u>	<u>1</u>	<u>3</u>	<u>3</u>	<u>2</u>	<u>0</u>	<u>5</u>	<u>7</u>	<u>12</u>	<u>11</u>	<u>607</u>	<u>591</u>	<u>619</u>	<u>602</u>
	%	(0.3)	(0.2)	(0.5)	(0.5)	(0.3)	(0.0)	(0.8)	(1.2)	(1.9)	(1.8)	(98.1)	(98.2)	(100.0)	(100.0)
1989	N	<u>2</u>	<u>2</u>	<u>2</u>	<u>3</u>	<u>0</u>	<u>2</u>	<u>12</u>	<u>5</u>	<u>16</u>	<u>12</u>	<u>644</u>	<u>616</u>	<u>660</u>	<u>628</u>
	%	(0.3)	(0.3)	(0.3)	(0.5)	(0.0)	(0.3)	(1.8)	(0.8)	(2.4)	(1.9)	(97.6)	(98.1)	(100.0)	(100.0)
Duluth															
Business & Economics															
1987		2	4	1	4	0	4	2	3	5	15	463	1048	468	1063
1988		2	2	5	4	5	2	0	2	12	10	437	1035	449	1045
1989		2	6	2	6	10	6	2	1	16	19	441	1062	457	1081
Educ. & Human Serv.															
1987		2	5	4	17	0	6	0	3	6	31	329	1091	335	1122
1988		2	7	2	12	1	5	1	3	6	27	307	1058	313	1085
1989		4	6	1	9	4	4	3	3	12	22	342	1098	354	1120
Fine Arts															
1987		0	0	0	3	3	2	0	1	3	6	61	212	64	218
1988		1	1	1	3	1	2	0	1	3	7	72	217	75	224
1989		2	0	0	7	2	3	0	2	4	12	65	232	69	244
Graduate															
1987		0	1	2	1	0	0	1	0	3	2	118	108	121	110
1988		0	1	3	2	0	0	0	1	3	4	92	168	95	172
1989		0	0	2	3	0	0	0	1	2	4	87	166	89	170

(continued on next page)

TABLE 3: MINORITY ENROLLMENT^a, BY GROUP, REGISTRATION STATUS (NEW vs. RETURNING)^b, AND CAMPUS/COLLEGE, FALL QUARTERS 1987, 1988 AND 1989

Campus/College	Minority Group										ALL Other Students		TOTAL ALL STUDENTS		
	Black Non-Hispanic		American Indian or Alaskan		Asian or Pacific Islander		Hispanic		Total Minority Students		New	Return	New	Return	
	New	Return	New	Return	New	Return	New	Return	New	Return					
Liberal Arts															
1987	6	14	10	16	5	6	0	5	21	41	694	1437	715	1478	
1988	9	10	8	27	2	11	2	4	21	52	819	1529	840	1581	
1989	4	15	11	27	18	14	3	5	36	61	733	1687	769	1748	
Medicine															
1987	0	0	1	1	0	1	0	1	1	3	36	52	37	55	
1988	0	1	0	1	0	0	0	1	0	3	33	51	33	54	
1989	0	0	0	0	2	0	0	0	2	0	24	68	26	68	
Science & Engineering															
1987	3	4	6	10	10	18	3	2	22	34	560	963	582	997	
1988	7	6	5	7	8	18	10	2	30	33	530	976	560	1009	
1989	4	11	5	11	12	20	2	8	23	50	561	991	584	1041	
TOTAL Duluth															
1987	N	<u>13</u>	<u>28</u>	<u>24</u>	<u>52</u>	<u>18</u>	<u>37</u>	<u>6</u>	<u>15</u>	<u>61</u>	<u>132</u>	<u>2261</u>	<u>4911</u>	<u>2322</u>	<u>5043</u>
	%	(0.6)	(0.6)	(1.0)	(1.0)	(0.8)	(0.7)	(0.2)	(0.3)	(2.6)	(2.6)	(97.4)	(97.4)	(100.0)	(100.0)
1988	N	<u>21</u>	<u>28</u>	<u>24</u>	<u>56</u>	<u>17</u>	<u>38</u>	<u>13</u>	<u>14</u>	<u>75</u>	<u>136</u>	<u>2290</u>	<u>5034</u>	<u>2365</u>	<u>5170</u>
	%	(0.9)	(0.5)	(1.0)	(1.1)	(0.7)	(0.7)	(0.6)	(0.3)	(3.2)	(2.6)	(96.8)	(97.4)	(100.0)	(100.0)
1989	N	<u>16</u>	<u>38</u>	<u>21</u>	<u>63</u>	<u>48</u>	<u>47</u>	<u>10</u>	<u>20</u>	<u>95</u>	<u>168</u>	<u>2253</u>	<u>5304</u>	<u>2348</u>	<u>5472</u>
	%	(0.7)	(0.7)	(0.9)	(1.1)	(2.0)	(0.9)	(0.4)	(0.4)	(4.0)	(3.1)	(96.0)	(96.9)	(100.0)	(100.0)
Morris															
1987	N	<u>11</u>	<u>48</u>	<u>18</u>	<u>17</u>	<u>12</u>	<u>14</u>	<u>8</u>	<u>17</u>	<u>49</u>	<u>96</u>	<u>710</u>	<u>1112</u>	<u>759</u>	<u>1208</u>
	%	(1.4)	(4.0)	(2.4)	(1.4)	(1.6)	(1.2)	(1.1)	(1.4)	(6.5)	(8.0)	(93.5)	(92.0)	(100.0)	(100.0)
1988	N	<u>15</u>	<u>26</u>	<u>17</u>	<u>22</u>	<u>12</u>	<u>21</u>	<u>4</u>	<u>14</u>	<u>48</u>	<u>83</u>	<u>602</u>	<u>1288</u>	<u>650</u>	<u>1371</u>
	%	(2.3)	(1.9)	(2.6)	(1.6)	(1.9)	(1.5)	(0.6)	(1.0)	(7.4)	(6.0)	(92.6)	(94.0)	(100.0)	(100.0)
1989	N	<u>17</u>	<u>20</u>	<u>10</u>	<u>38</u>	<u>16</u>	<u>27</u>	<u>7</u>	<u>13</u>	<u>50</u>	<u>98</u>	<u>528</u>	<u>1365</u>	<u>578</u>	<u>1463</u>
	%	(3.0)	(1.4)	(1.7)	(2.6)	(2.8)	(1.8)	(1.2)	(0.9)	(8.7)	(6.7)	(91.3)	(93.3)	(100.0)	(100.0)

(continued on next page)

TABLE 3: MINORITY ENROLLMENT^a, BY GROUP, REGISTRATION STATUS (NEW vs. RETURNING)^b, AND CAMPUS/COLLEGE, FALL QUARTERS 1987, 1988 AND 1989 Page 20

Campus/College	Minority Group										ALL Other Students		TOTAL ALL STUDENTS		
	Black Non-Hispanic		American Indian or Alaskan		Asian or Pacific Islander		Hispanic		Total Minority Students		New	Return	New	Return	
	New	Return	New	Return	New	Return	New	Return	New	Return					
Twin Cities															
Agriculture	1987	1	5	1	0	1	4	0	2	3	11	140	620	143	631
	1988	4	5	0	0	1	5	1	3	6	13	158	570	164	583
	1989	6	4	1	0	2	5	1	2	10	11	149	528	159	539
Architecture/Land. Arch. ^c	1987														
	1988														
	1989	0	3	0	0	0	7	0	2	0	12	16	260	16	272
Biological Sciences															
	1987	1	8	0	0	0	13	1	2	2	23	31	274	33	297
	1988	0	5	1	2	0	11	1	5	2	23	19	271	21	294
	1989	0	3	0	1	1	13	0	5	1	22	30	260	31	282
Education															
	1987	6	20	0	2	3	11	2	9	11	42	234	1810	245	1852
	1988	8	16	1	5	1	13	1	9	11	43	190	1684	201	1727
	1989	0	16	0	8	4	16	3	6	7	46	203	1418	210	1464
General College															
	1987	79	110	31	32	83	103	28	33	221	278	749	1452	970	1730
	1988	73	143	36	31	59	125	31	38	199	337	778	1221	977	1558
	1989	96	102	36	26	70	102	31	28	233	268	669	1081	902	1349
Graduate School															
	1987	27	57	9	26	27	112	17	49	80	244	1759	6192	1839	6436
	1988	12	70	4	26	23	101	16	47	55	244	1727	6138	1782	6382
	1989	32	63	2	18	27	110	16	48	77	239	1713	6081	1790	6320

(continued on next page)

TABLE 3: MINORITY ENROLLMENT^a, BY GROUP, REGISTRATION STATUS (NEW vs. RETURNING)^b, AND CAMPUS/COLLEGE, FALL QUARTERS 1987, 1988 AND 1989 Page 21

Campus/College	Minority Group								Total Minority Students	ALL Other Students		TOTAL ALL STUDENTS		
	Black Non- Hispanic		American Indian or Alaskan		Asian or Pacific Islander		Hispanic			New	Return	New	Return	
	New	Return	New	Return	New	Return	New	Return						
Health Sciences														
Dental Hygiene														
1987	0	1	1	0	0	0	0	1	1	2	9	36	10	38
1988	0	1	0	1	1	2	1	0	2	4	9	36	11	40
1989	0	0	0	0	0	5	0	1	0	6	10	39	10	45
Dentistry														
1987	1	2	0	1	3	12	1	1	5	16	53	334	58	350
1988	0	1	0	2	1	15	1	1	2	19	50	310	52	329
1989	0	0	0	1	1	12	2	4	3	17	39	288	42	305
Medical School														
1987	1	15	1	8	9	45	2	18	13	86	113	1700	126	1786
1988	2	21	0	8	13	85	5	23	20	137	101	1705	121	1842
1989	2	22	1	7	9	87	3	22	15	138	92	1683	107	1821
Medical Technology														
1987	0	0	0	0	2	2	0	0	2	2	4	44	6	46
1988	2	0	0	0	0	7	0	0	2	7	9	39	11	46
1989	0	2	0	0	0	7	0	1	0	10	8	64	8	74
Mortuary Science														
1987	0	0	0	0	0	0	0	0	0	0	15	35	15	35
1988	0	1	0	1	0	0	1	1	1	3	19	28	20	31
1989	0	0	0	1	0	0	0	0	0	1	22	37	22	38
Nursing														
1987	1	2	0	0	0	3	1	1	2	6	29	272	31	278
1988	0	2	0	0	0	2	0	2	0	6	6	181	6	187
1989	0	1	0	0	1	3	0	0	1	4	15	170	16	174
Occupational Therapy														
1987	0	0	0	0	0	1	0	0	0	1	10	65	10	66
1988	0	0	0	1	0	1	0	0	0	2	13	64	13	66
1989	0	0	0	0	0	1	0	0	0	1	14	61	14	62

(continued on next page)

TABLE 3: MINORITY ENROLLMENT^a, BY GROUP, REGISTRATION STATUS (NEW vs. RETURNING)^b, AND CAMPUS/COLLEGE, FALL QUARTERS 1987, 1988 AND 1989

Campus/College	Minority Group								Total Minority Students	ALL Other Students		TOTAL ALL STUDENTS		
	Black Non- Hispanic		American Indian or Alaskan		Asian or Pacific Islander		Hispanic			New	Return	New	Return	
	New	Return	New	Return	New	Return	New	Return						
Pharmacy														
1987	0	1	0	0	3	10	1	0	4	11	43	271	47	282
1988	0	2	0	0	2	14	0	1	2	17	52	255	54	272
1989	2	2	0	1	1	13	1	1	4	17	55	267	59	284
Physical Therapy														
1987	0	0	0	0	0	0	0	0	0	0	12	47	12	47
1988	0	1	0	0	0	0	0	0	0	1	7	53	7	54
1989	0	0	0	0	0	1	0	0	0	1	12	48	12	49
Public Health														
1987	1	2	0	2	0	1	0	2	1	7	66	157	67	164
1988	1	2	0	1	4	1	1	2	6	6	79	154	85	160
1989	2	1	0	0	2	2	1	1	5	4	83	183	88	187
Veterinary Medicine														
1987	0	2	0	1	0	2	1	1	1	6	43	235	44	241
1988	1	1	0	1	1	3	0	3	2	8	42	224	44	232
1989	0	1	1	0	0	3	1	3	2	7	35	212	37	219
SUBTOTAL H1th Sci.														
1987	4	25	2	12	17	76	6	24	29	137	397	3196	426	3333
1988	6	32	0	15	22	130	9	33	37	210	387	3049	424	3259
1989	6	29	2	10	14	134	8	33	30	206	385	3052	415	3258
Home Economics														
1987	5	30	1	4	8	42	1	0	15	76	157	1074	172	1150
1988	4	26	1	5	9	39	4	4	18	74	144	974	162	1048
1989	4	23	0	6	3	46	3	3	10	78	149	892	159	970
Law School														
1987	7	13	1	5	6	9	5	10	19	37	196	519	215	556
1988	6	15	1	6	17	14	6	11	30	46	168	519	198	565
1989	13	18	3	5	12	25	8	14	36	62	199	499	235	561

(continued on next page)

TABLE 3: MINORITY ENROLLMENT^a, BY GROUP, REGISTRATION STATUS (NEW vs. RETURNING)^b, AND CAMPUS/COLLEGE, FALL QUARTERS 1987, 1988 AND 1989

Campus/College	Minority Group										ALL Other Students		TOTAL ALL STUDENTS		
	Black Non-Hispanic		American Indian or Alaskan		Asian or Pacific Islander		Hispanic		Total Minority Students		New	Return	New	Return	
	New	Return	New	Return	New	Return	New	Return	New	Return					
Liberal Arts															
1987	67	236	25	76	169	478	43	137	304	927	3910	11941	4214	12868	
1988	70	247	24	70	151	504	62	140	307	961	3615	11627	3922	12588	
1989	77	244	25	59	157	487	47	150	306	940	3492	11197	3798	12137	
Management															
1987	2	18	0	2	2	41	0	16	4	77	89	1241	93	1291	
1988	0	20	0	3	2	45	0	14	2	82	68	949	70	1031	
1989	1	17	0	7	2	45	1	10	4	79	69	797	73	876	
Natural Resources															
1987	0	0	1	1	0	0	0	0	1	1	59	223	60	224	
1988	0	1	0	0	0	1	0	1	0	3	55	231	55	234	
1989	0	1	1	2	1	2	0	1	2	6	72	256	74	262	
Technology															
1987	19	57	4	16	64	366	5	27	92	466	1035	3786	1127	4252	
1988	21	64	4	14	86	349	12	26	123	453	1003	3571	1126	4024	
1989	9	54	3	9	77	354	7	29	96	446	962	3214	1058	3660	
University College															
1987	0	14	1	1	0	3	0	2	1	20	0	115	1	135	
1988	0	9	0	2	0	3	0	3	0	17	1	158	1	175	
1989	0	7	0	2	0	0	0	4	0	13	1	132	1	145	
TOTAL Twin Cities															
1987	N	<u>218</u>	<u>593</u>	<u>76</u>	<u>177</u>	<u>380</u>	<u>1258</u>	<u>108</u>	<u>311</u>	<u>782</u>	<u>2339</u>	<u>8756</u>	<u>32416</u>	<u>9538</u>	<u>34755</u>
	%	(2.3)	(1.7)	(0.8)	(0.5)	(4.0)	(3.6)	(1.1)	(0.9)	(8.2)	(6.7)	(91.8)	(93.3)	(100.0)	(100.0)
1988	N	<u>204</u>	<u>653</u>	<u>72</u>	<u>179</u>	<u>371</u>	<u>1340</u>	<u>143</u>	<u>334</u>	<u>790</u>	<u>2506</u>	<u>8313</u>	<u>30962</u>	<u>9103</u>	<u>33468</u>
	%	(2.2)	(2.0)	(0.8)	(0.5)	(4.1)	(4.0)	(1.6)	(1.0)	(8.7)	(7.5)	(91.3)	(92.5)	(100.0)	(100.0)
1989	N	<u>244</u>	<u>584</u>	<u>73</u>	<u>163</u>	<u>370</u>	<u>1346</u>	<u>125</u>	<u>335</u>	<u>812</u>	<u>2428</u>	<u>8109</u>	<u>29667</u>	<u>8921</u>	<u>32095</u>
	%	(2.7)	(1.8)	(0.8)	(0.5)	(4.2)	(4.2)	(1.4)	(1.1)	(9.1)	(7.6)	(90.9)	(92.4)	(100.0)	(100.0)

(continued on next page)

TABLE 3: MINORITY ENROLLMENT^a, BY GROUP, REGISTRATION STATUS (NEW vs. RETURNING)^b, AND CAMPUS/COLLEGE, FALL QUARTERS 1987, 1988 AND 1989

Campus/College	Minority Group										ALL Other Students		TOTAL ALL STUDENTS		
	Black Non-Hispanic		American Indian or Alaskan		Asian or Pacific Islander		Hispanic		Total Minority Students		New	Return	New	Return	
	New	Return	New	Return	New	Return	New	Return	New	Return					
Waseca															
1987	N	<u>1</u>	<u>3</u>	<u>0</u>	<u>1</u>	<u>0</u>	<u>1</u>	<u>0</u>	<u>1</u>	<u>1</u>	<u>6</u>	<u>504</u>	<u>652</u>	<u>505</u>	<u>658</u>
	%	(1.5)	(0.5)	(0.0)	(0.1)	(0.0)	(0.1)	(0.0)	(0.1)	(1.5)	(0.8)	(98.5)	(99.2)	(100.0)	(100.0)
1988	N	<u>0</u>	<u>2</u>	<u>1</u>	<u>0</u>	<u>1</u>	<u>1</u>	<u>0</u>	<u>0</u>	<u>2</u>	<u>3</u>	<u>428</u>	<u>736</u>	<u>430</u>	<u>739</u>
	%	(0.0)	(0.3)	(0.2)	(0.0)	(0.2)	(0.1)	(0.0)	(0.0)	(0.4)	(0.4)	(99.6)	(99.6)	(100.0)	(100.0)
1989	N	<u>9</u>	<u>0</u>	<u>0</u>	<u>0</u>	<u>1</u>	<u>2</u>	<u>0</u>	<u>0</u>	<u>10</u>	<u>2</u>	<u>602</u>	<u>560</u>	<u>612</u>	<u>562</u>
	%	(1.5)	(0.0)	(0.0)	(0.0)	(0.1)	(0.4)	(0.0)	(0.0)	(1.6)	(0.4)	(98.4)	(99.6)	(100.0)	(100.0)
TOTAL ENROLLMENT															
1987	N	<u>243</u>	<u>672</u>	<u>122</u>	<u>248</u>	<u>411</u>	<u>1310</u>	<u>129</u>	<u>348</u>	<u>905</u>	<u>2578</u>	<u>12853</u>	<u>39588</u>	<u>13758</u>	<u>42166</u>
	%	(1.8)	(1.6)	(0.9)	(0.6)	(3.0)	(3.1)	(0.9)	(0.8)	(6.6)	(6.1)	(93.4)	(93.9)	(100.0)	(100.0)
1988	N	<u>242</u>	<u>710</u>	<u>117</u>	<u>260</u>	<u>403</u>	<u>1400</u>	<u>165</u>	<u>369</u>	<u>927</u>	<u>2739</u>	<u>12240</u>	<u>38611</u>	<u>13167</u>	<u>41350</u>
	%	(1.8)	(1.7)	(0.9)	(0.6)	(3.1)	(3.4)	(1.2)	(0.9)	(7.0)	(6.6)	(93.0)	(93.4)	(100.0)	(100.0)
1989	N	<u>288</u>	<u>644</u>	<u>106</u>	<u>262</u>	<u>435</u>	<u>1424</u>	<u>154</u>	<u>373</u>	<u>983</u>	<u>2708</u>	<u>12136</u>	<u>37512</u>	<u>13119</u>	<u>40220</u>
	%	(2.2)	(1.6)	(0.8)	(0.7)	(3.3)	(3.5)	(1.2)	(0.9)	(7.5)	(6.7)	(92.5)	(93.3)	(100.0)	(100.0)

^a See footnote at end of Table 1A.

^b (i) New Student - Student registering for the first time at the University. Included are: new high school, new adult special, and new advanced standing transfer student.

(ii) Returning Student - Student who has registered at the University before this term returning to the University as student other than new student. Included are: continuing student, inter-campus transfer, intra campus transfer and readmitted.

^c See Notes on page 1.

Figure 3: Minority Enrollment By Group And Level
 Twin Cities Campus, U. Of M.
 Fall Quarter, 1989

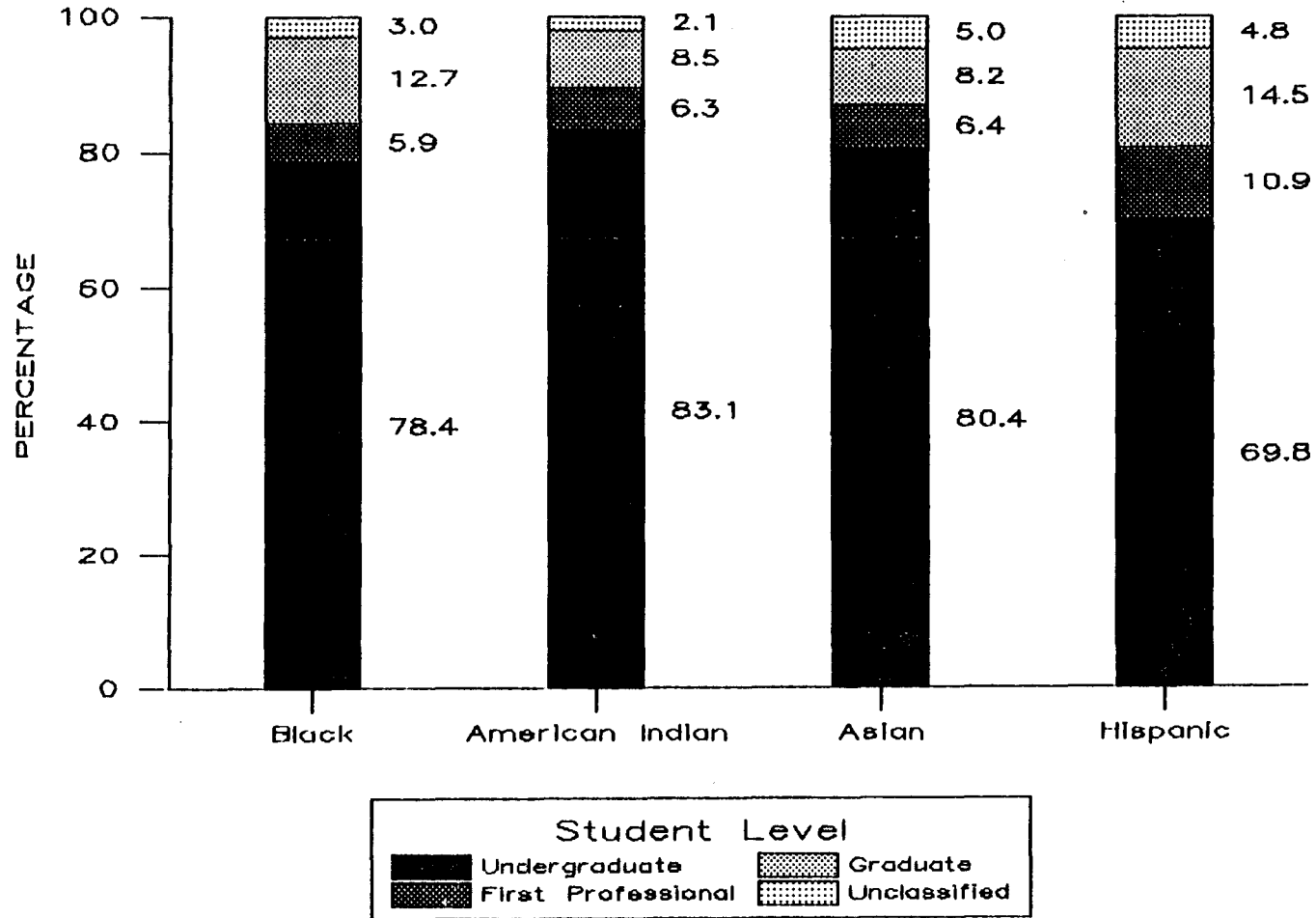


TABLE 4: MINORITY ENROLLMENT^a, BY GROUP, CAMPUS AND STUDENT LEVEL, FALL QUARTERS 1987, 1988 AND 1989

Campus/Student Level	Minority Group														
	Black Non-Hispanic		American Indian or Alaskan		Asian or Pacific Islander		Hispanic		Total Minority Students		ALL Other Students		TOTAL ALL STUDENTS		
	N	%	N	%	N	%	N	%	N	%	N	%	N	%	
CROOKSTON															
Undergraduate	1987	0	0.0	5	100.0	0	0.0	10	90.9	15	88.2	819	73.2	834	73.4
	1988	3	100.0	5	83.0	1	50.0	11	91.7	20	87.0	883	73.7	903	74.0
	1989	4	100.0	5	100.0	1	50.0	15	88.2	25	89.3	736	58.4	761	59.1
Freshman	1987	0	0.0	4	80.0	0	0.0	8	72.7	12	70.6	500	44.7	512	45.1
	1988	2	67.0	3	50.0	1	50.0	8	66.7	14	60.9	552	46.1	566	46.4
	1989	4	100.0	2	40.0	0	0.0	11	64.7	17	60.7	447	35.5	464	36.0
Sophomore	1987	0	0.0	1	20.0	0	0.0	2	18.2	3	17.6	319	28.5	322	28.3
	1988	1	33.0	2	33.3	0	0.0	3	25.0	6	26.1	331	27.6	337	27.6
	1989	0	0.0	3	60.0	1	50.0	4	23.5	8	28.6	289	22.9	297	23.1
Unclassified ^d	1987	0	0.0	0	0.0	1	100.0	1	9.1	2	11.8	300	26.8	302	26.6
	1988	0	0.0	1	16.7	1	50.0	1	8.3	3	13.0	315	26.3	318	26.0
	1989	0	0.0	0	0.0	1	50.0	2	11.8	3	10.7	524	41.6	527	40.9
TOTAL CROOKSTON	1987	0	0.0	5	100.0	1	100.0	11	100.0	17	100.0	1119	100.0	1136	100.0
	1988	3	100.0	6	100.0	2	100.0	12	100.0	23	100.0	1198	100.0	1221	100.0
	1989	4	100.0	5	100.0	2	100.0	17	100.0	28	100.0	1260	100.0	1288	100.0

(continued on next page)

TABLE 4: MINORITY ENROLLMENT^a, BY GROUP, CAMPUS AND STUDENT LEVEL, FALL QUARTERS 1987, 1988 AND 1989

Campus/Student Level		Minority Group								Total Minority Students	ALL Other Students		TOTAL ALL STUDENTS		
		Black Non- Hispanic		American Indian or Alaskan		Asian or Pacific Islander		Hispanic			N	%	N	%	
		N	%	N	%	N	%	N	%						
DULUTH															
Undergraduate	1987	40	97.6	68	89.5	53	96.4	19	90.4	180	93.3	6719	93.7	6899	93.7
	1988	51	96.2	69	86.3	53	96.4	25	92.6	198	92.1	6826	93.3	7024	93.2
	1989	54	100.0	78	92.9	90	94.7	29	96.7	251	95.4	7026	93.0	7277	93.1
Freshman	1987	17	41.5	28	36.8	25	45.5	7	33.3	77	39.9	2855	39.8	2935	39.9
	1988	26	49.0	30	37.5	25	45.5	14	51.9	95	44.2	2900	39.6	2995	39.7
	1989	25	46.3	29	34.5	46	48.4	11	36.7	111	42.2	2322	30.7	2433	31.1
Sophomore	1987	6	14.6	11	14.5	4	7.3	3	14.2	24	12.4	1502	20.9	1526	20.7
	1988	10	18.9	16	20.0	14	25.4	4	14.8	44	20.5	1441	19.7	1485	19.7
	1989	13	24.1	15	17.9	17	17.9	5	16.7	50	19.0	1571	20.8	1621	20.7
Junior	1987	8	19.5	13	17.1	9	16.4	4	19.0	34	17.6	1112	15.5	1146	15.6
	1988	7	13.2	8	10.0	4	7.3	3	11.1	22	10.2	1229	16.8	1251	16.6
	1989	7	12.9	12	14.3	10	10.5	7	23.3	36	13.7	1290	17.1	1326	17.0
Senior	1987	9	22.0	16	21.1	15	27.3	5	23.8	45	23.3	1247	17.4	1292	17.5
	1988	8	15.1	15	18.8	10	18.2	4	14.8	37	17.2	1256	17.2	1293	17.2
	1989	9	16.7	22	26.2	17	17.9	6	20.0	54	20.5	1843	24.4	1897	24.3
First Professional ^b	1987	0	0.0	2	2.6	1	1.8	1	4.8	4	2.1	88	1.2	92	1.2
	1988	1	1.9	1	1.2	1	1.8	1	3.7	4	1.9	83	1.1	87	1.2
	1989	0	0.0	0	0.0	2	2.1	0	0.0	2	0.8	92	1.2	94	1.2
Graduate ^c	1987	1	2.4	4	5.3	0	0.0	1	4.8	6	3.1	273	3.8	279	3.8
	1988	1	1.9	6	7.5	0	0.0	1	3.7	8	3.7	312	4.3	320	4.2
	1989	0	0.0	5	5.9	0	0.0	1	3.3	6	2.3	308	4.1	314	4.0
Unclassified ^d	1987	0	0.0	2	2.6	1	1.8	0	0.0	3	1.5	92	1.3	95	1.3
	1988	0	0.0	4	5.0	1	1.8	0	0.0	5	2.3	99	1.3	104	1.4
	1989	0	0.0	1	1.2	3	3.2	0	0.0	4	1.5	131	1.7	135	1.7
TOTAL DULUTH	1987	41	100.0	76	100.0	55	100.0	21	100.0	193	100.0	7172	100.0	7365	100.0
	1988	53	100.0	80	100.0	55	100.0	27	100.0	215	100.0	7320	100.0	7535	100.0
	1989	54	100.0	84	100.0	95	100.0	30	100.0	263	100.0	7557	100.0	7820	100.0

(continued on next page)

TABLE 4: MINORITY ENROLLMENT^a, BY GROUP, CAMPUS AND STUDENT LEVEL, FALL QUARTERS 1987, 1988 AND 1989

Campus/Student Level		Minority Group										ALL Other Students		TOTAL ALL STUDENTS	
		Black Non-Hispanic		American Indian or Alaskan		Asian or Pacific Islander		Hispanic		Total Minority Students		N	%	N	%
		N	%	N	%	N	%	N	%	N	%				
MORRIS															
Undergraduate	1987	59	100.0	34	97.1	26	100.0	25	100.0	144	99.3	1791	98.3	1935	98.4
	1988	41	100.0	38	97.4	33	100.0	18	100.0	130	99.2	1870	98.9	2000	99.0
	1989	37	100.0	43	100.0	42	97.7	20	100.0	142	99.3	1880	99.1	2022	99.1
Freshman	1987	15	25.4	20	57.1	14	53.8	16	64.0	65	44.8	759	41.7	824	41.9
	1988	19	46.3	16	41.0	16	48.5	8	44.5	59	45.0	639	33.8	698	34.6
	1989	23	62.2	13	30.2	19	44.2	7	35.0	62	43.3	549	28.9	611	30.0
Sophomore	1987	12	20.3	8	22.9	5	19.2	5	20.0	30	20.7	421	23.1	451	22.9
	1988	5	12.2	13	33.3	12	36.4	4	22.2	34	25.9	589	31.2	623	30.8
	1989	6	16.2	15	34.9	12	27.9	6	30.0	39	27.3	535	28.2	574	28.1
Junior	1987	23	39.0	3	8.6	5	19.2	2	8.0	33	22.8	352	19.3	385	19.6
	1988	11	26.8	6	15.4	4	12.1	4	22.2	25	19.1	375	19.8	400	19.8
	1989	4	10.8	8	18.6	9	20.9	5	25.0	26	18.2	495	26.1	521	25.5
Senior	1987	9	15.3	3	8.6	2	7.7	2	8.0	16	11.0	259	14.2	275	14.0
	1988	6	14.7	3	7.7	1	3.0	2	11.1	12	9.2	267	14.1	279	13.8
	1989	4	10.8	7	16.3	2	4.7	2	10.0	15	10.5	301	15.8	316	15.5
Unclassified ^d	1987	0	0.0	1	2.9	0	0.0	0	0.0	1	0.7	31	1.7	32	1.6
	1988	0	0.0	1	2.6	0	0.0	0	0.0	1	0.8	20	1.1	21	1.0
	1989	0	0.0	0	0.0	1	2.3	0	0.0	1	0.7	18	0.9	19	0.9
TOTAL MORRIS	1987	59	100.0	35	100.0	26	100.0	25	100.0	145	100.0	1822	100.0	1967	100.0
	1988	41	100.0	39	100.0	33	100.0	18	100.0	131	100.0	1890	100.0	2021	100.0
	1989	37	100.0	43	100.0	43	100.0	20	100.0	143	100.0	1898	100.0	2041	100.0

(continued on next page)

TABLE 4: MINORITY ENROLLMENT^a, BY GROUP, CAMPUS AND STUDENT LEVEL, FALL QUARTERS 1987, 1988 AND 1989

Campus/Student Level		Minority Group								Total Minority Students		ALL Other Students		TOTAL ALL STUDENTS	
		Black Non-Hispanic		American Indian or Alaskan		Asian or Pacific Islander		Hispanic							
		N	%	N	%	N	%	N	%						
TWIN CITIES															
Undergraduate	1987	659	81.3	196	77.5	1392	84.9	305	72.8	2552	81.8	28412	69.0	30964	69.9
	1988	699	81.6	199	79.3	1404	82.1	349	73.1	2651	80.5	26627	67.8	29278	68.8
	1989	649	78.4	196	83.1	1379	80.4	321	69.8	2545	78.5	25061	66.3	27606	67.3
Freshman	1987	262	32.3	85	33.6	466	28.4	121	28.9	934	29.9	8544	20.8	9478	21.4
	1988	307	35.8	91	36.3	470	27.5	147	30.8	1015	30.8	7775	19.8	8790	20.7
	1989	283	34.2	101	42.8	441	25.7	133	28.9	958	29.5	7006	18.5	7964	19.4
Sophomore	1987	169	20.8	51	20.2	313	19.1	78	18.6	611	19.6	6369	15.5	6980	15.8
	1988	159	18.6	44	17.5	302	17.7	65	13.6	570	17.3	5910	15.1	6480	15.2
	1989	128	15.5	28	11.9	300	17.5	66	14.4	522	16.1	5279	14.0	5801	14.2
Junior	1987	121	14.9	34	13.4	298	18.2	62	14.8	515	16.5	6056	14.7	6571	14.8
	1988	117	13.7	39	15.5	282	16.5	85	17.8	523	15.9	5788	14.7	6311	14.8
	1989	122	14.7	34	14.4	301	17.5	52	11.3	509	15.7	5743	15.2	6252	15.2
Senior	1987	107	13.2	26	10.3	315	19.2	44	10.5	492	15.8	7443	18.1	7935	17.9
	1988	116	13.5	25	10.0	350	20.4	52	10.9	543	16.5	7154	18.2	7697	18.1
	1989	116	14.0	33	14.0	337	19.7	70	15.2	556	17.2	7033	18.6	7589	18.5
First Professional ^b	1987	38	4.7	15	5.9	67	4.1	33	7.9	153	4.9	2317	5.6	2470	5.6
	1988	40	4.7	13	5.2	97	5.7	40	8.4	190	5.7	2132	5.4	2322	5.4
	1989	49	5.9	15	6.3	110	6.4	50	10.9	224	6.9	2033	5.4	2257	5.5
Graduate ^c	1987	92	11.3	37	14.6	137	8.4	69	16.5	335	10.7	8522	20.7	8857	20.0
	1988	93	10.8	32	12.7	131	7.6	71	14.9	327	9.9	8520	21.7	8847	20.8
	1989	105	12.7	20	8.5	141	8.2	67	14.5	333	10.3	8418	22.3	8751	21.3
Unclassified ^d	1987	22	2.7	5	2.0	42	2.6	12	2.8	81	2.6	1921	4.7	2002	4.5
	1988	25	2.9	7	2.8	79	4.6	17	3.6	128	3.9	1996	5.1	2124	5.0
	1989	25	3.0	5	2.1	86	5.0	22	4.8	138	4.3	2264	6.0	2402	5.9
TOTAL TWIN CITIES	1987	811	100.0	253	100.0	1638	100.0	419	100.0	3121	100.0	41172	100.0	44293	100.0
	1988	857	100.0	251	100.0	1711	100.0	477	100.0	3296	100.0	39275	100.0	42571	100.0
	1989	828	100.0	236	100.0	1716	100.0	460	100.0	3240	100.0	37776	100.0	41016	100.0

(continued on next page)

TABLE 4: MINORITY ENROLLMENT^a, BY GROUP, CAMPUS AND STUDENT LEVEL, FALL QUARTERS 1987, 1988 AND 1989

Campus/Student Level		Minority Group										ALL Other Students	TOTAL ALL STUDENTS		
		Black Non-Hispanic		American Indian or Alaskan		Asian or Pacific Islander		Hispanic		Total Minority Students					
		N	%	N	%	N	%	N	%	N	%			N	%
WASECA															
Undergraduate	1987	4	100.0	1	100.0	1	100.0	1	100.0	7	100.0	983	85.0	990	85.1
	1988	2	100.0	1	100.0	2	100.0	0	0.0	5	100.0	853	73.3	858	73.4
	1989	9	100.0	0	0.0	3	100.0	0	0.0	12	100.0	797	68.6	809	68.9
Freshman	1987	2	50.0	1	100.0	1	100.0	1	100.0	5	71.4	672	58.1	677	58.2
	1988	2	100.0	1	100.0	0	0.0	0	0.0	3	60.0	542	46.6	545	46.6
	1989	9	100.0	0	0.0	1	33.3	0	0.0	10	83.3	510	43.9	520	44.3
Sophomore	1987	2	50.0	0	0.0	0	0.0	0	0.0	2	28.6	311	26.9	313	26.9
	1988	0	0.0	0	0.0	2	100.0	0	0.0	2	40.0	311	26.7	313	26.8
	1989	0	0.0	0	0.0	2	66.7	0	0.0	2	16.7	287	24.7	289	24.6
Unclassified ^d	1987	0	0.0	0	0.0	0	0.0	0	0.0	0	0.0	173	15.0	173	14.9
	1988	0	0.0	0	0.0	0	0.0	0	0.0	0	0.0	311	26.7	311	26.6
	1989	0	0.0	0	0.0	0	0.0	0	0.0	0	0.0	365	31.4	365	31.1
TOTAL WASECA	1987	4	100.0	1	100.0	1	100.0	1	100.0	7	100.0	1156	100.0	1163	100.0
	1988	2	100.0	1	100.0	2	100.0	0	0.0	5	100.0	1164	100.0	1169	100.0
	1989	9	100.0	0	0.0	3	100.0	0	0.0	12	100.0	1162	100.0	1174	100.0

^aSee footnote at end of Table 1A.

^bTwin Cities Campus

Includes regular students of the School of Dentistry, Medical School, Law School, and the College of Veterinary Medicine, and Doctor of Pharmacy students of the College of Pharmacy.

Duluth Campus

Includes all students of School of Medicine.

^cTwin Cities Campus

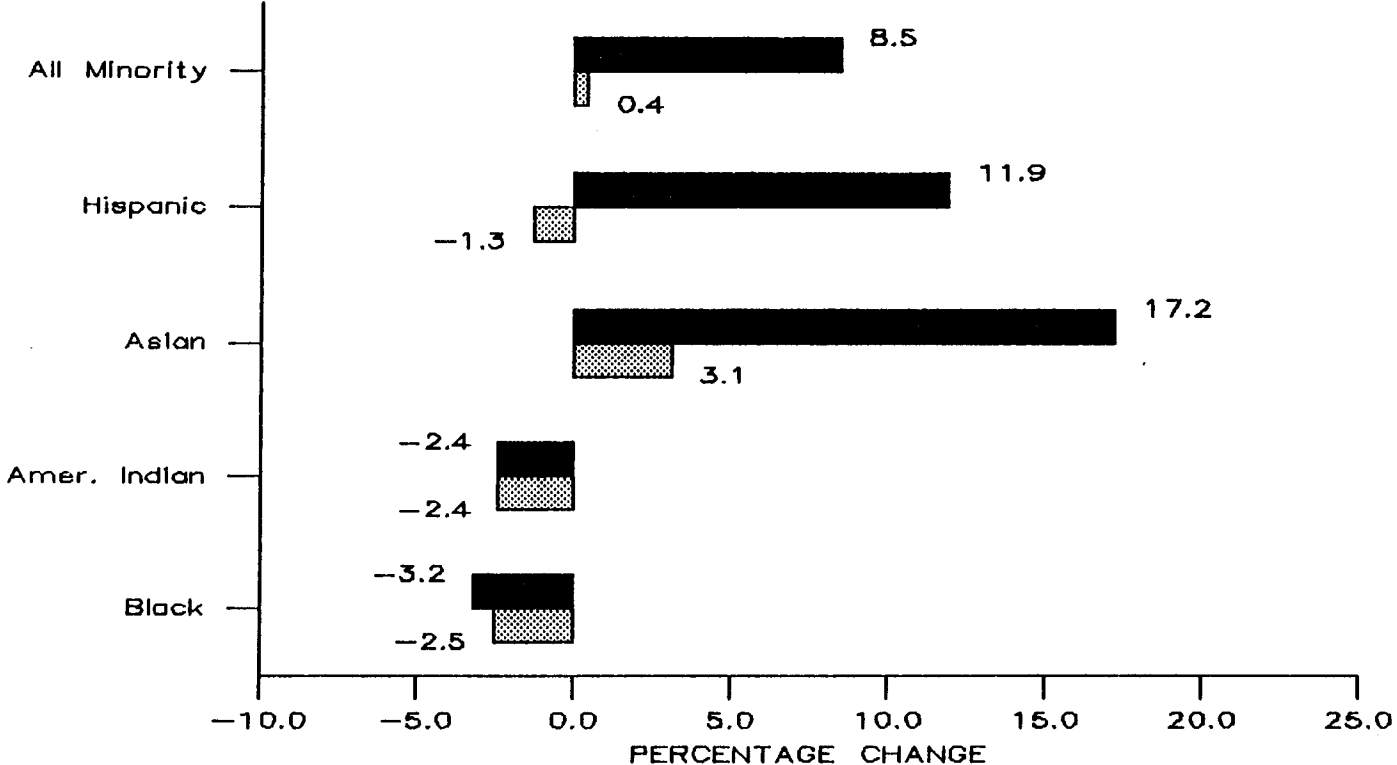
Includes students enrolled in the Graduate School, program students in the School of Public Health, M.Ed. degree students in the College of Education and M.Ag. degree students in the College of Agriculture.

Duluth Campus

Includes students enrolled in the Graduate School, M.Ed. degree students in the College of Education and Human Service Profession and Master of Industrial Safety program students in the College of Sciences and Engineering.

^dIncludes all special students.

Figure 4: % Change Of Minority Students By Group
University Of Minnesota
1985 vs 1989 And 1988 vs 1989



Years Of Comparison
■ 1985 vs. 1989 ▨ 1988 vs. 1989

TABLE 5: COMPARISON OF MINORITY ENROLLMENT, BY GROUP AND CAMPUS, FALL QUARTER 1985 THROUGH 1989

Minority Group/Campus	1985	1986	1987	1988	1989	Increase In Attendance 1985-1989		Increase In Attendance 1988-1989		
						N	%	N	%	
Black Non-Hispanic										
Crookston	12	0	0	3	4	-8	-66.7	1	33.3	
Duluth	34	28	41	53	54	20	58.8	1	1.9	
Morris	74	70	59	41	37	-37	-50.0	-4	-9.8	
Twin Cities	838	776	811	857	828	-10	-1.2	-29	-3.4	
Waseca	<u>5</u>	<u>7</u>	<u>4</u>	<u>2</u>	<u>9</u>	<u>4</u>	<u>80.0</u>	<u>7</u>	<u>350.0</u>	
Total University	963	881	915	956	932	-31	-3.2	-24	-2.5	
American Indian or Alaskan										
Crookston	5	5	5	6	5	0	0.0	-1	-16.7	
Duluth	110	82	76	80	84	-26	-23.6	4	5.0	
Morris	19	24	35	39	43	24	126.3	4	10.3	
Twin Cities	243	238	253	251	236	-7	-2.9	-15	-6.0	
Waseca	<u>0</u>	<u>1</u>	<u>1</u>	<u>1</u>	<u>0</u>	<u>0</u>	<u>0.0</u>	<u>-1</u>	<u>-100.0</u>	
Total University	377	350	370	377	368	-9	-2.4	-9	-2.4	
Asian or Pacific Islander										
Crookston	0	1	1	2	2	2	-	0	0.0	
Duluth	37	43	55	55	95	58	156.8	40	72.7	
Morris	16	26	26	33	43	27	168.8	10	30.3	
Twin Cities	1532	1578	1638	1711	1716	184	12.0	5	0.3	
Waseca	<u>1</u>	<u>2</u>	<u>1</u>	<u>2</u>	<u>3</u>	<u>2</u>	<u>200.0</u>	<u>1</u>	<u>50.0</u>	
Total University	1586	1650	1721	1803	1859	273	17.2	56	3.1	
Hispanic										
Crookston	14	16	11	12	17	3	21.4	5	41.7	
Duluth	16	24	21	27	30	14	87.5	3	11.1	
Morris	21	31	25	18	20	-1	-4.8	2	11.1	
Twin Cities	420	401	419	477	460	40	9.5	-17	-3.6	
Waseca	<u>0</u>	<u>0</u>	<u>1</u>	<u>0</u>	<u>0</u>	<u>0</u>	<u>0.0</u>	<u>0</u>	<u>0</u>	
Total University	471	472	477	534	527	56	11.9	-7	-1.3	

(continued on next page)

TABLE 5: COMPARISON OF MINORITY ENROLLMENT, BY GROUP AND CAMPUS, FALL QUARTER 1985 THROUGH 1989

Minority Group/Campus	1985	1986	1987	1988	1989	Increase In Attendance 1985-1989		Increase In Attendance 1988-1989	
						N	%	N	%
All Minority Students									
Crookston	31	22	17	23	28	-3	-9.7	5	21.7
Duluth	197	177	193	215	263	66	33.5	48	22.3
Morris	130	151	145	131	143	13	10.0	12	9.2
Twin Cities	3033	2993	3121	3296	3240	207	6.8	-56	-1.7
Waseca	<u>6</u>	<u>10</u>	<u>7</u>	<u>5</u>	<u>12</u>	<u>6</u>	<u>100.0</u>	<u>7</u>	<u>140.0</u>
Total University	3397	3353	3483	3670	3686	289	8.5	16	0.4
All Other Students									
Crookston	1106	1191	1119	1198	1260	154	13.9	62	5.2
Duluth	7322	7124	7172	7320	7557	235	3.2	237	3.2
Morris	1552	1623	1822	1890	1898	346	22.3	8	0.4
Twin Cities	41557	42013	41172	39275	37776	-3781	-9.1	-1499	-3.8
Waseca	<u>1142</u>	<u>1139</u>	<u>1156</u>	<u>1164</u>	<u>1162</u>	<u>20</u>	<u>1.8</u>	<u>-2</u>	<u>-0.2</u>
Total University	52679	53090	52441	50847	49653	-3026	-5.7	-1194	-2.3
All Students									
Crookston	1137	1213	1136	1221	1288	151	13.3	67	5.5
Duluth	7519	7301	7365	7535	7820	301	4.0	285	3.8
Morris	1682	1774	1967	2021	2041	359	21.3	20	1.0
Twin Cities	44590	45006	44293	42571	41016	-3574	-8.0	-1555	-3.7
Waseca	<u>1148</u>	<u>1149</u>	<u>1163</u>	<u>1169</u>	<u>1174</u>	<u>26</u>	<u>2.3</u>	<u>5</u>	<u>0.4</u>
Total University	56076	56443	55924	54517	53339	-2737	-4.9	-1178	-2.2