

Minority Enrollment Report

Fall Quarter 1984

University of Minnesota  
Office for Student Affairs  
Office of Admissions and Records

Andrew Huang  
Registration, Student Records,  
and Scheduling  
150 Williamson Hall  
376-1656  
December, 1984

## Table of Contents

	<u>Page</u>
Notes . . . . .	1
Definitions . . . . .	2
Figure 1, Enrollment Trends, U of M, by Minority Group, Fall 1972 - Fall 1984 . .	3

### Tables

1. Minority Enrollment, by Minority Group and Campus/College, Fall 1983 and 1984 . . . . .	4
2. Minority Enrollment, by Minority Group, Sex, and Campus/College, Fall quarter 1984 . . . . .	6
3. Minority Enrollment, Twin Cities Campus, by Minority Group and Student Level, Fall quarter, 1984 . . . . .	8
4. Comparison of Minority Enrollment by Minority Group and Campus, Fall Quarters 1980 through 1984 . . . . .	9

NOTES

1. All data in the report are based on the number of students registered as of the end of the second week of classes.
2. Ethnic background information of students comes either from application forms for admission or request for update of student ethnic data after fall registration. In both cases the supplying of ethnic data is optional.
3. Data for the years other than 1984 are taken from the annual Fall Quarter Minority Enrollment Report of the University of Minnesota.
4. The descriptions of the ethnic categories in the report are the latest version used by the United States Department of Education.
5. The Mayo Graduate School of Medicine is now an independent degree granting institution and is no longer affiliated with the University of Minnesota. Enrollment statistics in this report have been adjusted to reflect this change.

## DEFINITION

## ETHNIC BACKGROUND OF STUDENTS

Black, Non-Hispanic--A person having origins in any of the black racial groups of Africa (except those of Hispanic origin).

American Indian or Alaskan Native--A person having origins in any of the original peoples of North America, and who maintains cultural identification through tribal affiliation or community recognition.

Asian or Pacific Islander--A person having origins in any of the original peoples of the far East, Southeast Asia, the Indian subcontinent, or the Pacific Islands. This area includes, for example, China, Japan, Korea, the Philippine Islands, and Samoa.

Hispanic--A person of Mexican, Puerto Rican, Cuban, Central or South American, or other Spanish culture or origin, regardless of race.

All Other Students--Includes the following two categories:

White, Non-Hispanic--A person having origins in any of the original peoples of Europe, North Africa or in the Middle East (except those of Hispanic origin).

International Student (Foreign Student)--i.e., Non-Resident Alien: a person who is not a citizen or national of the United States and who is in this country on a temporary basis and does not have the right to remain indefinitely. Resident Aliens, who are not citizens or nationals of the United States and who have been lawfully admitted for permanent residence (and who hold alien registration receipt cards-Form I-151) are included in the appropriate racial/ethnic categories along with United States citizens.

## STUDENT LEVEL

Undergraduate Students--Those who have met all requirements for admission to the University and who pursue programs which lead to either bachelor's or associate degrees.

First Professional Students--Those who are enrolled in a professional school or program which requires at least 2 academic years of college work for entrance and a total of at least 6 years for a degree.

Graduate Students--Those who hold the bachelor's or first-professional degree or equivalent and are working toward a master's or doctor's degree.

Unclassified Students--Those who are not candidates for a degree or other formal award and who are taking courses in regular classes with other students.

Enrollment Trends, U of M, by Minority Group  
Fall 1972 - Fall 1984

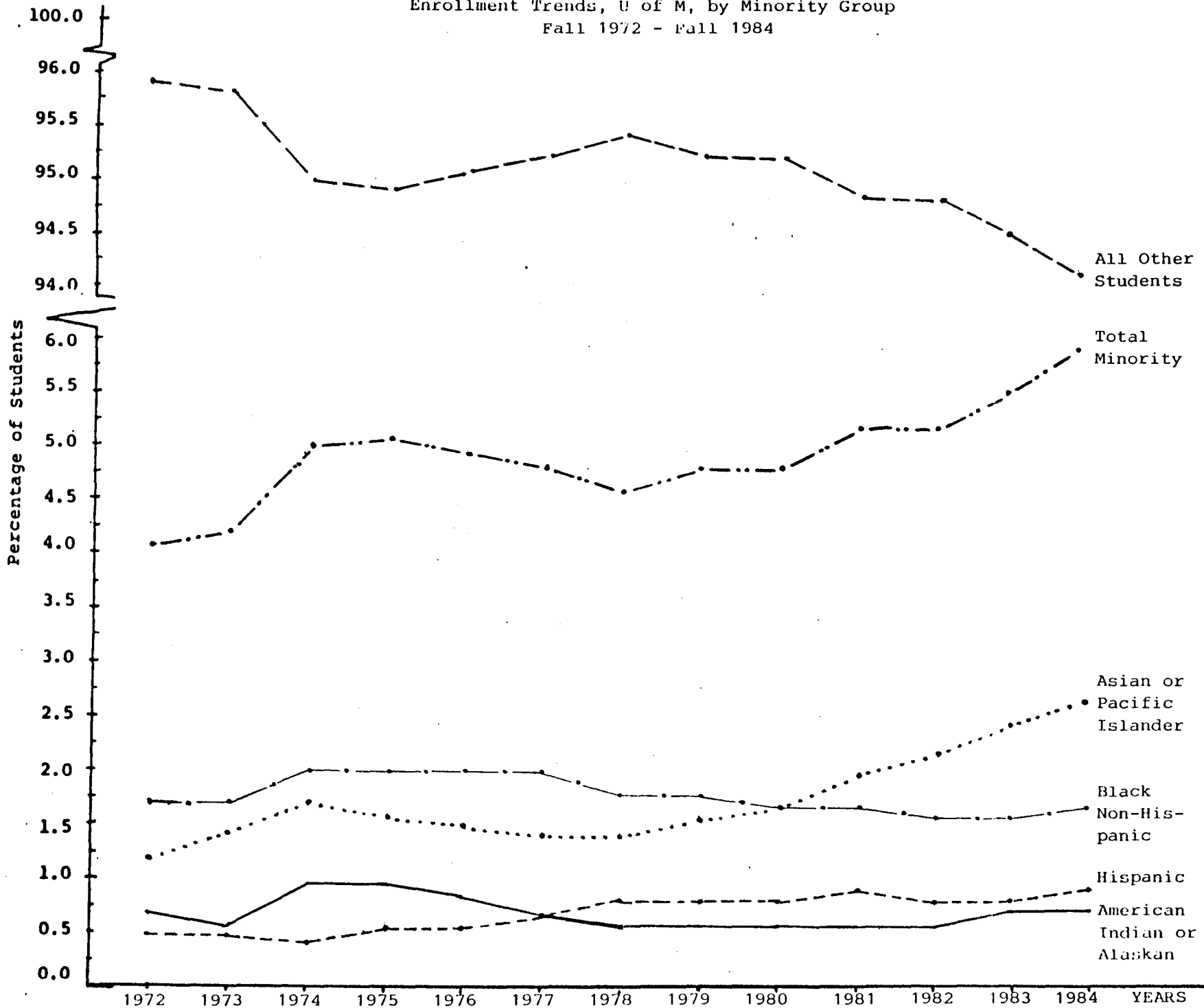


TABLE 1: MINORITY ENROLLMENT<sup>a</sup>, BY MINORITY GROUP AND CAMPUS/COLLEGE, FALL 1983 AND 1984

Campus/College	Minority Group								Total Minority Students		ALL Other Students		TOTAL ALL STUDENTS	
	Black Non-Hispanic		American Indian or Alaskan		Asian or Pacific Islander		Hispanic							
	1983	1984	1983	1984	1983	1984	1983	1984	1983	1984	1983	1984	1983	1984
Crookston	N 2	7	7	6	1	1	20	25	30	39	1113	1106	1143	1145
	% (0.2)	(0.6)	(0.6)	(0.5)	(0.1)	(0.1)	(1.7)	(2.2)	(2.6)	(3.4)	(97.4)	(96.6)	(100.0)	(100.0)
Duluth														
Business & Economics	3	5	12	3	5	4	0	1	20	13	1429	1405	1530	1418
Education	5	5	15	33	3	2	0	1	23	41	999	993	1022	1034
Fine Arts	3	1	6	6	1	0	0	1	10	8	285	279	295	287
Graduate	1	1	7	5	3	1	0	0	11	7	239	210	250	217
Letters & Science	19	18	97	79	29	21	6	9	151	127	4178	4183	4329	4310
Medicine	0	0	3	4	0	0	0	0	3	4	94	96	97	100
Social Development	0	0	7	11	0	3	0	0	7	14	81	81	88	95
TOTAL Duluth	N 31	30	147	141	41	31	6	12	225	214	7305	7247	7530	7461
	% (0.4)	(0.4)	(2.0)	(1.9)	(0.5)	(0.4)	(0.1)	(0.2)	(3.0)	(2.9)	(97.0)	(97.1)	(100.0)	(100.0)
Morris	N 57	68	20	19	6	15	5	15	88	117	1515	1548	1603	1665
	% (3.6)	(4.1)	(1.2)	(1.1)	(0.4)	(0.9)	(0.3)	(0.9)	(5.5)	(7.0)	(94.5)	(93.0)	(100.0)	(100.0)
Twin Cities														
Agriculture	17	17	1	1	11	12	3	5	32	35	1261	1160	1293	1195
Biological Sciences	3	5	1	1	8	12	2	4	14	22	401	382	415	404
Education	31	40	3	12	12	8	11	19	57	79	2183	2326	2240	2405
Forestry	2	3	1	2	1	2	1	2	5	9	394	345	399	354
General College	279	290	62	67	240	245	74	75	655	677	2696	2612	3351	3289
Graduate School	69	61	17	21	135	104	59	50	280	236	7340	7229	7620	7465
Health Sciences														
Dental Hygiene	0	0	1	0	2	1	0	0	3	1	68	47	71	48
Dentistry	2	1	3	1	11	6	4	5	20	13	506	467	526	480

(continued on next page)

TABLE 1: MINORITY ENROLLMENT<sup>a</sup>, BY MINORITY GROUP AND CAMPUS/COLLEGE, FALL 1983 AND 1984

Campus/College	Minority Group								Total Minority Students		ALL Other Students		TOTAL ALL STUDENTS	
	Black Non- Hispanic		American Indian or Alaskan		Asian or Pacific Islander		Hispanic							
	1983	1984	1983	1984	1983	1984	1983	1984	1983	1984	1983	1984	1983	1984
Twin Cities (continued)														
Health Sciences														
Medical School	20	21	8	12	34	46	37	37	99	116	1920	1899	2019	2015
Medical Technology	1	0	0	1	1	2	0	0	2	3	58	59	60	62
Mortuary Science	1	0	0	0	0	0	1	0	2	0	85	79	87	79
Nursing	4	4	4	3	8	8	1	1	7	16	394	370	411	386
Occupational Therapy	1	0	0	1	0	0	0	0	1	1	64	68	65	69
Pharmacy	2	2	2	0	13	10	0	0	17	12	265	291	282	303
Physical Therapy	0	0	0	0	0	0	0	0	0	0	61	58	61	58
Public Health	6	2	4	1	3	9	2	2	15	14	246	267	261	281
SUBTOTAL Hlth. Sci.	37	30	22	19	72	82	45	45	176	176	3667	3605	3843	3781
Home Economics	26	24	3	3	19	28	5	5	53	60	1309	1285	1362	1345
Law School	25	16	9	11	0	4	29	35	63	66	652	664	715	730
Liberal Arts	290	267	84	73	452	519	148	144	974	1003	16173	14948	17147	15951
Management	24	24	2	3	23	21	3	1	52	49	1484	1428	1536	1477
Technology	54	61	19	20	334	383	39	40	446	504	5642	5302	6088	5806
University College	4	8	0	1	0	2	1	2	5	13	123	131	128	144
Veterinary Medicine	0	1	1	1	2	2	2	1	5	5	303	308	308	313
TOTAL Twin Cities	N 861	847	225	235	1309	1424	422	428	2817	2934	43628	41725	46445	44659
	% (1.8)	(1.9)	(0.5)	(0.5)	(2.8)	(3.2)	(0.9)	(1.0)	(6.0)	(6.6)	(94.0)	(93.4)	(100.0)	(100.0)
Waseca	N 1	2	0	1	0	0	0	0	1	3	1109	1117	1110	1120
	% (0.1)	(0.2)	(0.0)	(0.1)	(0.0)	(0.0)	(0.0)	(0.0)	(0.1)	(0.3)	(99.9)	(99.7)	(100.0)	(100.0)
TOTAL ENROLLMENT	N 952	954	399	402	1357	1471	453	480	3161	3307	54670	52743	57831	56050
	% (1.6)	(1.7)	(0.7)	(0.7)	(2.4)	(2.6)	(0.8)	(0.9)	(5.5)	(5.9)	(94.5)	(94.1)	(100.0)	(100.0)

<sup>a</sup>Minority students are based on 92.1 percent of the total student population who had provided ethnic background information through the collection methods described in Notes on page 1. Data for Duluth-Medicine, Graduate School, School of Dentistry, Medical School, School of Pharmacy, Law School and College of Veterinary Medicine are supplied by the student records office from each college.

TABLE 2: MINORITY ENROLLMENT<sup>a</sup>, BY MINORITY GROUP, SEX AND CAMPUS/COLLEGE, FALL QUARTER 1984

Campus/College	Minority Group								Total Minority Students	All Other Students		TOTAL ALL STUDENTS			
	Black Non- Hispanic		American Indian or Alaskan		Asian or Pacific Islander		Hispanic			M	F	M	F		
	M	F	M	F	M	F	M	F							
Crookston	N	7	0	1	5	0	1	14	11	22	17	535	571	557	588
	%	(1.2)	(0.0)	(0.2)	(0.8)	(0.0)	(0.2)	(2.5)	(1.9)	(3.9)	(2.9)	(96.1)	(97.1)	(100.0)	(100.0)
Duluth															
Business & Economics		3	2	2	1	3	1	1	0	9	4	807	598	816	602
Education		4	1	13	20	1	1	0	1	18	23	398	595	416	618
Fine Arts		0	1	2	4	0	0	1	0	3	5	128	151	131	156
Graduate		1	0	3	2	0	1	0	0	4	3	113	97	117	100
Letters & Science		9	9	41	38	15	6	5	4	70	57	2407	1776	2477	1833
Medicine		0	0	4	0	0	0	0	0	4	0	54	42	58	42
Social Development		0	0	3	8	2	1	0	0	5	9	14	67	19	76
TOTAL Duluth	N	17	13	68	73	21	10	7	5	113	101	3921	3326	4034	3427
	%	(0.4)	(0.4)	(1.7)	(2.1)	(0.5)	(0.3)	(0.2)	(0.1)	(2.8)	(2.9)	(97.2)	(97.1)	(100.0)	(100.0)
Morris	N	27	41	11	8	11	4	9	6	58	59	753	795	811	854
	%	(3.3)	(4.8)	(1.4)	(0.9)	(1.4)	(0.5)	(1.1)	(0.7)	(7.2)	(6.9)	(92.8)	(93.1)	(100.0)	(100.0)
Twin Cities															
Agriculture		9	8	0	1	5	7	2	3	16	19	747	413	763	432
Biological Sciences		2	3	0	1	6	6	2	2	10	12	230	152	240	164
Education		19	21	9	3	2	6	9	10	39	40	819	1507	858	1547
Forestry		3	0	0	2	1	1	1	1	5	4	272	73	277	77
General College		151	139	34	33	171	74	45	30	401	276	1547	1065	1948	1341
Graduate School		33	28	16	5	68	36	27	23	144	92	4066	3163	4210	3255
Health Sciences															
Dental Hygiene		0	0	0	0	0	1	0	0	0	1	0	47	0	48
Dentistry		1	0	1	0	3	3	3	2	8	5	350	117	358	122

(continued on next page)



TABLE 2: MINORITY ENROLLMENT<sup>a</sup>, BY MINORITY GROUP, SEX AND CAMPUS/COLLEGE, FALL QUARTER 1984

Campus/College	Minority Group								Total Minority Students	All Other Students		TOTAL ALL STUDENTS		
	Black Non- Hispanic		American Indian or Alaskan		Asian or Pacific Islander		Hispanic			M	F	M	F	
	M	F	M	F	M	F	M	F						
Twin Cities (continued)														
Health Sciences														
Medical School	17	4	6	6	36	10	22	15	81	35	1261	638	1342	673
Medical Technology	0	0	0	1	0	2	0	0	0	3	11	48	11	51
Mortuary Science	0	0	0	0	0	0	0	0	0	0	65	14	65	14
Nursing	0	4	0	3	1	7	0	1	1	15	47	323	48	338
Occupational Therapy	0	0	0	1	0	0	0	0	0	1	3	65	3	66
Pharmacy	0	2	0	0	3	7	0	0	3	9	142	149	145	158
Physical Therapy	0	0	0	0	0	0	0	0	0	0	7	51	7	51
Public Health	1	1	1	0	6	3	1	1	9	5	73	194	82	199
SUBTOTAL Health Science	19	11	8	11	49	33	26	19	102	74	1959	1646	2061	1720
Home Economics	4	20	1	2	8	20	3	2	16	44	101	1184	117	1228
Law School	7	9	6	5	2	2	25	10	40	26	385	279	425	305
Liberal Arts	141	126	35	38	289	230	80	64	545	458	7214	7734	7759	8192
Management	13	11	0	3	14	7	1	0	28	21	785	643	813	664
Technology	44	17	17	3	289	94	32	8	382	122	4391	911	4773	1033
University College	2	6	0	1	2	0	0	2	4	9	47	84	51	93
Veterinary Medicine	0	1	0	1	2	0	0	1	2	3	152	156	154	159
TOTAL Twin Cities	N 447	400	126	109	908	516	253	175	1734	1200	22715	19010	24449	20210
	%(1.8)	(2.0)	(0.5)	(0.5)	(3.7)	(2.5)	(1.1)	(0.9)	(7.1)	(5.9)	(92.9)	(94.1)	(100.0)	(100.0)
Waseca	N 1	1	0	1	0	0	0	0	1	2	586	531	587	533
	%(0.2)	(0.2)	(0.0)	(0.2)	(0.0)	(0.0)	(0.0)	(0.0)	(0.2)	(0.4)	(99.8)	(99.6)	(100.0)	(100.0)
TOTAL ENROLLMENT	N 499	455	206	196	940	531	283	197	1928	1379	28510	24233	30438	25612
	%(1.6)	(1.8)	(0.7)	(0.7)	(3.1)	(2.1)	(0.9)	(0.8)	(6.3)	(5.4)	(93.7)	(94.6)	(100.0)	(100.0)

<sup>a</sup>See footnote at end of Table 1.

TABLE 3: MINORITY ENROLLMENT<sup>a</sup>, TWIN CITIES CAMPUS, BY MINORITY GROUP AND STUDENT LEVEL, FALL QUARTER, 1984

Level	Minority Group								Total Minority Students	ALL Other Students	TOTAL ALL STUDENTS			
	Black Non- Hispanic		American Indian or Alaskan		Asian or Pacific Islander		Hispanic							
	N	%	N	%	N	%	N	%				N	%	
Undergraduate														
Freshmen	305	36.0	83	35.3	420	29.5	108	25.2	916	31.2	8553	20.5	9469	21.2
Sophomores	155	18.3	27	11.5	299	21.0	61	14.3	542	18.5	6116	14.6	6658	14.9
Juniors	117	13.8	33	14.1	269	18.9	51	11.9	470	16.0	6492	15.6	6962	15.6
Seniors	127	15.0	32	13.6	226	15.9	63	14.7	448	15.3	7428	17.8	7876	17.6
<b>TOTAL Undergraduates</b>	<b>704</b>	<b>83.1</b>	<b>175</b>	<b>74.5</b>	<b>1214</b>	<b>85.3</b>	<b>283</b>	<b>66.1</b>	<b>2376</b>	<b>81.0</b>	<b>28589</b>	<b>68.5</b>	<b>30965</b>	<b>69.3</b>
First Professionals <sup>b</sup>	32	3.8	21	8.9	39	2.7	71	16.6	163	5.5	2506	6.0	2669	6.0
Graduates <sup>c</sup>	73	8.6	23	9.8	114	8.0	56	13.1	266	9.1	7855	18.8	8121	18.2
Unclassified <sup>d</sup>	38	4.5	16	6.8	57	4.0	18	4.2	129	4.4	2775	6.7	2904	6.5
<b>TOTAL ENROLLMENT</b>	<b>847</b>	<b>(100.0)</b>	<b>235</b>	<b>(100.0)</b>	<b>1424</b>	<b>(100.0)</b>	<b>428</b>	<b>(100.0)</b>	<b>2934</b>	<b>(100.0)</b>	<b>41725</b>	<b>(100.0)</b>	<b>44659</b>	<b>(100.0)</b>

<sup>a</sup>Minority enrollment figures are based on 91.8 percent of students at the Twin Cities campus who provided ethnic background information through the collection methods described in Notes on page 1.

<sup>b</sup>Include regular students of the School of Dentistry, Medical School, Law School, and the College of Veterinary Medicine, and Doctor of Pharmacy students of the College of Pharmacy.

<sup>c</sup>Include students enrolled in the Graduate School, program students in the School of Public Health, M.Ed. degree students in the College of Education and M.Ag. degree students in the College of Agriculture.

<sup>d</sup>Include special students of all colleges.

TABLE 4: COMPARISON OF MINORITY ENROLLMENT, BY MINORITY GROUP AND CAMPUS, FALL QUARTER 1980 THROUGH 1984

Minority Group/Campus	1980	1981	1982	1983	1984	Increase in Attendance 1980-1984		Increase in Attendance 1983-1984	
						N	%	N	%
<b>Black Non-Hispanic</b>									
Crookston	3	2	6	2	7	4	133.3	5	250.0
Duluth	37	32	34	31	30	- 7	- 18.9	- 1	- 3.2
Morris	60	65	65	57	68	8	13.3	11	19.3
Twin Cities	865	926	865	861	847	- 18	- 2.1	- 14	- 1.6
Waseca	0	0	0	1	2	2	--	1	100.0
<b>TOTAL University</b>	<b>965</b>	<b>1025</b>	<b>970</b>	<b>952</b>	<b>954</b>	<b>- 11</b>	<b>- 1.1</b>	<b>2</b>	<b>0.2</b>
<b>American Indian or Alaskan</b>									
Crookston	7	12	11	7	6	- 1	- 14.3	- 1	- 14.3
Duluth	80	73	104	147	141	61	76.3	- 6	- 4.1
Morris	15	11	20	20	19	4	26.7	- 1	- 5.0
Twin Cities	228	236	213	225	235	7	3.1	10	4.4
Waseca	0	0	0	0	1	1	--	1	--
<b>TOTAL University</b>	<b>330</b>	<b>332</b>	<b>348</b>	<b>399</b>	<b>402</b>	<b>72</b>	<b>21.8</b>	<b>3</b>	<b>0.7</b>
<b>Asian or Pacific Islander</b>									
Crookston	2	3	1	1	1	- 1	- 50.0	0	--
Duluth	18	23	27	41	31	13	72.2	- 10	- 24.4
Morris	3	5	7	6	15	12	400.0	9	150.0
Twin Cities	996	1162	1269	1309	1424	428	43.0	115	8.8
Waseca	1	0	1	0	0	- 1	-100.0	0	0.0
<b>TOTAL University</b>	<b>1020</b>	<b>1193</b>	<b>1305</b>	<b>1357</b>	<b>1471</b>	<b>451</b>	<b>44.2</b>	<b>114</b>	<b>8.4</b>
<b>Hispanic</b>									
Crookston	18	16	21	20	25	7	38.9	5	25.0
Duluth	23	20	5	6	12	- 11	- 47.8	6	100.0
Morris	4	4	6	5	15	11	275.0	10	200.0
Twin Cities	435	462	408	422	428	- 7	- 1.6	6	1.4
Waseca	1	0	0	0	0	- 1	-100.0	0	0.0
<b>TOTAL University</b>	<b>481</b>	<b>502</b>	<b>440</b>	<b>453</b>	<b>480</b>	<b>- 1</b>	<b>- 0.2</b>	<b>27</b>	<b>6.0</b>

(continued on next page)

TABLE 4: COMPARISON OF MINORITY ENROLLMENT, BY MINORITY GROUP AND CAMPUS, FALL QUARTER 1980 THROUGH 1984

Minority Group/Campus	1980	1981	1982	1983	1984	Increase in Attendance 1980-1984		Increase in Attendance 1983-1984		
						N	%	N	%	
<b>All Minority Students</b>										
Crookston	30	33	39	30	39	9	30.0	9	30.0	
Duluth	158	148	170	225	214	56	35.4	- 11	- 4.9	
Morris	82	85	98	88	117	35	42.7	29	32.9	
Twin Cities	2524	2786	2755	2817	2934	410	16.2	117	4.2	
Waseca	2	0	1	1	3	1	50.0	2	200.0	
<b>TOTAL University</b>	<u>2796</u>	<u>3052</u>	<u>3063</u>	<u>3161</u>	<u>3307</u>	<u>511</u>	<u>18.3</u>	<u>146</u>	<u>4.6</u>	
<b>All Other Students</b>										
Crookston	1149	1128	1110	1113	1106	- 43	- 3.7	- 7	- 0.6	
Duluth	7235	7376	7564	7305	7247	12	0.2	- 58	- 0.8	
Morris	1542	1605	1485	1515	1548	6	0.4	33	2.2	
Twin Cities	44862	44647	44628	43628	41725	-3137	- 7.0	-1903	- 4.4	
Waseca	1121	1101	1112	1109	1117	- 4	- 0.4	8	0.7	
<b>TOTAL University</b>	<u>55909</u>	<u>55857</u>	<u>55899</u>	<u>54670</u>	<u>52743</u>	<u>-3166</u>	<u>- 5.7</u>	<u>-1927</u>	<u>- 3.5</u>	
<b>All Students</b>										
Crookston	1179	1161	1149	1143	1145	- 34	- 2.9	2	0.2	
Duluth	7393	7524	7734	7530	7461	68	0.9	- 69	- 0.9	
Morris	1624	1690	1583	1603	1665	41	2.5	62	3.9	
Twin Cities	47386	47433	47383	46445	44659	-2727	- 5.7	-1786	- 3.8	
Waseca	1123	1101	1113	1110	1120	- 3	- 0.3	10	0.9	
<b>TOTAL University</b>	<u>58705</u>	<u>58909</u>	<u>58962</u>	<u>57831</u>	<u>56050</u>	<u>-2655</u>	<u>- 4.5</u>	<u>-1781</u>	<u>- 3.1</u>	