

1/21/82  
A.A.S.

Minority Enrollment Report

Fall Quarter 1982

University of Minnesota

Office for Student Affairs

Office of Admissions and Records

Andrew Huang  
Reporting and Research Division  
260 Williamson Hall  
373-2106/376-1820  
November, 1982

Table of Contents

	<u>Page</u>
Notes. . . . .	1
Definitions. . . . .	2
Figure 1, Enrollment Trends, U of M, by Minority Group, Fall 1972 - Fall 1982. . . . .	3
 <u>Tables</u>	
1. Minority Enrollment, by Minority Group and Campus/College, Fall 1981 and 1982. . .	4
2. Minority Enrollment, by Minority Group, Sex, and Campus/College, Fall Quarter 1982.	6
3. Minority Enrollment, Twin Cities Campus, by Minority Group and Student Level, Fall Quarter, 1982. . . . .	8
4. Comparison of Minority Enrollment by Minority Group and Campus, Fall Quarters 1978 Through 1982. . . . .	9

NOTES

1. All data in the report are based on the number of students registered as of the end of the second week of classes.
2. Beginning from fall, 1982 the Office of Admissions and Records (A&R) stopped collecting ethnic data from students through ethnic background survey cards at the time of registration. Instead A&R relied on ethnic data collected from applicants through application forms for admissions, and from students registered in spring quarter through the request form for demographic data updating.
3. The accuracy of enrollment data by sex and by class level (freshmen vs. sophomore, etc.) of Official Registration Statistics, Fall Quarter, 1982, was in doubt at the time this report was prepared. For this reason Table II (minority enrollment by sex) and Table III (minority enrollment by student level) are left blank from the report this year.
4. Data for the years other than 1982 are taken from the annual Fall Quarter Minority Enrollment Report prepared by the Office of Admissions and Records.
5. The descriptions of the ethnic categories in the report are the latest version proposed and used by the United States Department of Education.

## DEFINITION

## ETHNIC BACKGROUND OF STUDENTS

Black (Afro-American, non-Hispanic origin)--A person having origins in any of the black racial groups of Africa (excluding persons of Spanish, Portuguese, Latin American, or other Hispanic origin).

American Indian or Alaskan Native--A person having origins in any of the original peoples of North America, and who maintains a cultural identification through tribal affiliation or community recognition.

Asian American or Pacific Islander--A person having origins in any of the original peoples of the Far East, South-east Asia, the Indian subcontinent, or the Pacific Islands. The area includes, for example, China, Japan, Korea, the Philippine Islands, and Samoa.

Hispanic (Spanish Surname American)--A person of Mexican, Puerto Rican, Cuban, Central or South American, or other Spanish or Portuguese culture or origin, regardless of race.

All Other Students--Includes the following two categories:

Caucasian/White, non-Hispanic--A person having origins in any of the original peoples of Europe, North Africa, or the Middle East (excluding persons of Spanish or Portuguese origin).

International Student (Foreign Student)--i.e., Non-Resident Alien: a person who is not a citizen of the United States and who is in this country on a temporary basis and does not have the right to remain indefinitely. Resident Aliens, non-citizens who have been lawfully admitted for permanent residence (who hold a green card, Form I 151) are included in the appropriate Race/Ethnic categories along with United States citizens.

## STUDENT LEVEL

Undergraduate Students--Those who have met all requirements for admission to the University and who pursue programs which lead to either bachelor's or associate degrees.

First Professional Students--Those who are enrolled in a professional school or program which requires at least 2 academic years of college work for entrance and a total of at least 6 years for a degree.

Graduate Students--Those who hold the bachelor's or first-professional degree or equivalent and are working toward a master's or doctor's degree.

Unclassified Students--Those who are not candidates for a degree or other formal award and who are taking courses in regular classes with other students.

Enrollment Trends, U of M, by Minority Group  
Fall 1972 - Fall 1982

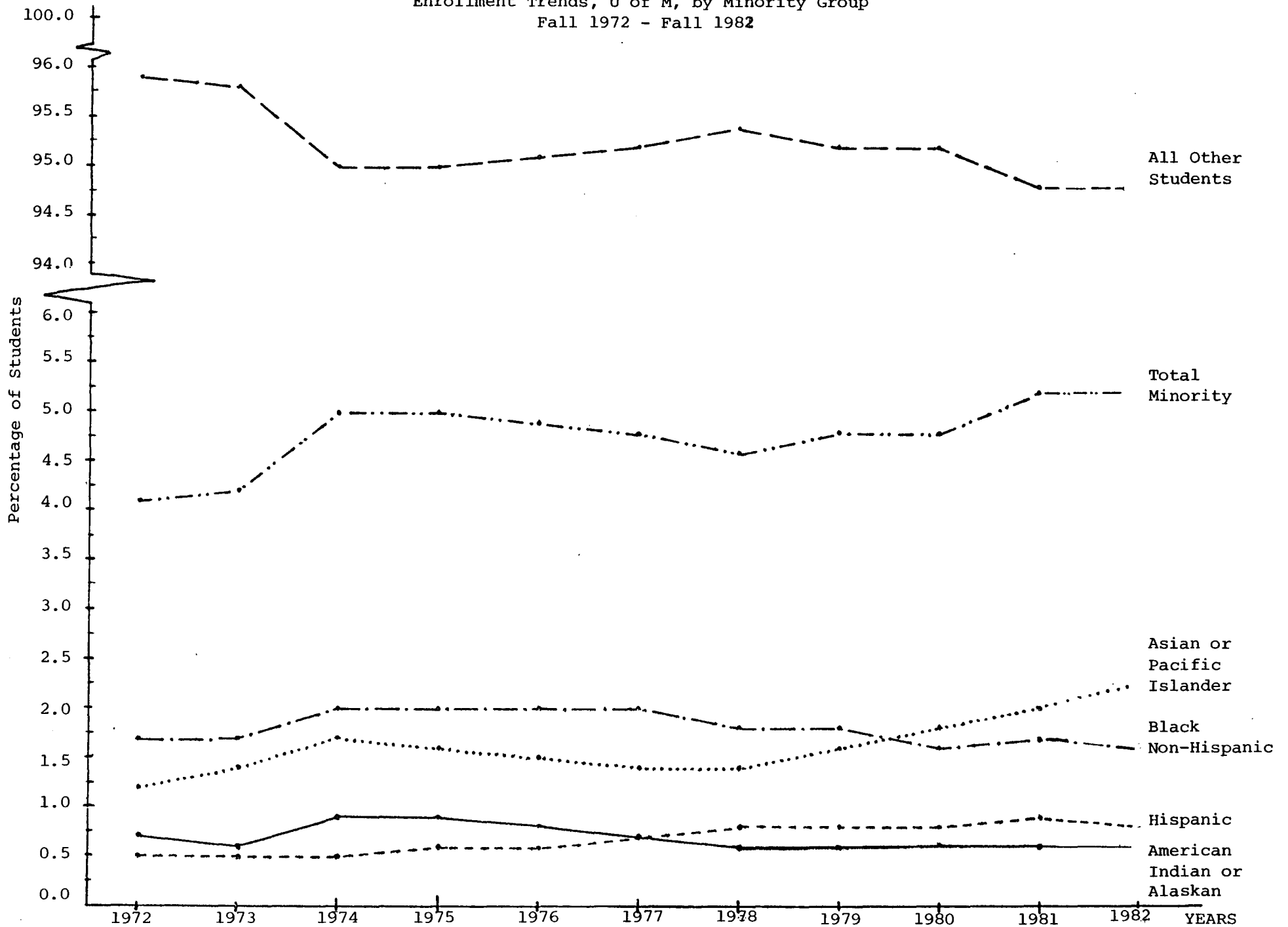


TABLE 1: MINORITY ENROLLMENT<sup>a</sup>, BY MINORITY GROUP AND CAMPUS/COLLEGE, FALL 1981 AND 1982

Campus/College	Minority Group														
	Black Non-Hispanic		American Indian or Alaskan		Asian or Pacific Islander		Hispanic American		Total Minority Students		ALL Other Students		TOTAL ALL STUDENTS		
	1981	1982	1981	1982	1981	1982	1981	1982	1981	1982	1981	1982	1981	1982	
Crookston	N	2	6	12	11	3	1	16	21	33	39	1128	1110	1161	1149
	%	(0.2)	(0.5)	(1.0)	(1.0)	(0.2)	(0.1)	(1.4)	(1.8)	(2.8)	(3.4)	(97.2)	(96.6)	(100.0)	(100.0)
Duluth															
Business & Economics		5	4	8	10	6	6	0	0	19	20	1407	1510	1426	1530
Education		1	6	6	4	3	4	2	0	12	14	1011	1018	1023	1032
Fine Arts		4	4	4	6	2	0	0	0	10	10	347	360	357	370
Graduate		3	1	6	5	1	0	0	0	10	6	233	241	243	247
Letters & Science		17	19	41	72	11	17	17	5	86	113	4187	4244	4273	4357
Medicine		0	0	2	2	0	0	0	0	2	2	95	93	97	95
Social Development		2	0	6	5	0	0	1	0	9	5	96	98	105	103
TOTAL Duluth	N	32	34	73	104	23	27	20	5	148	170	7376	7564	7524	7734
	%	(0.4)	(0.4)	(1.0)	(1.3)	(0.3)	(0.4)	(0.3)	(0.1)	(2.0)	(2.2)	(98.0)	(97.8)	(100.0)	(100.0)
Mayo-Graduate School	N	0	1	1	1	15	9	1	2	17	13	293	315	310	328
	%	(0.0)	(0.3)	(0.3)	(0.3)	(4.9)	(2.8)	(0.3)	(0.6)	(5.5)	(4.0)	(94.5)	(96.0)	(100.0)	(100.0)
Morris	N	65	65	11	20	5	7	4	6	85	98	1605	1485	1690	1583
	%	(3.8)	(4.1)	(0.7)	(1.3)	(0.3)	(0.4)	(0.2)	(0.4)	(5.0)	(6.2)	(95.0)	(93.8)	(100.0)	(100.0)
Twin Cities															
Agriculture		8	14	3	2	10	9	5	8	26	33	1652	1504	1678	1537
Biological Sciences		3	3	0	0	7	9	4	1	14	13	423	408	437	421
Education		17	26	5	4	11	8	11	10	44	48	1906	1994	1950	2042
Forestry		1	1	1	2	2	2	3	1	7	6	304	310	311	316
General College		296	295	74	67	203	227	93	55	666	644	2750	2784	3416	3428
Graduate School		112	81	12	14	205	200	75	60	404	355	7172	7385	7576	7740
Health Sciences															
Dental Hygiene		0	0	1	1	1	1	0	1	2	3	129	102	131	105
Dentistry		4	5	5	3	7	7	3	3	19	18	561	529	580	547
Medicine		23	19	10	8	21	19	41	39	95	85	1854	1935	1949	2020
Medical Technology		1	0	0	0	2	0	0	0	3	0	76	64	79	64

continued on next page

Campus/College	Minority Group												TOTAL ALL STUDENTS		
	Black Non-Hispanic		American Indian or Alaskan		Asian or Pacific Islander		Hispanic American		Total Minority Students		ALL Other Students		TOTAL ALL STUDENTS		
	1981	1982	1981	1982	1981	1982	1981	1982	1981	1982	1981	1982	1981	1982	
Twin Cities (Continued)															
Health Sciences (Cont.)															
Mortuary Science	0	0	0	1	0	0	0	0	0	1	73	70	73	71	
Nursing	2	4	3	2	7	7	3	2	15	15	470	453	485	468	
Occupational Therapy	1	1	0	0	0	0	0	0	1	1	73	74	74	75	
Pharmacy	2	2	3	2	16	16	0	0	21	20	287	271	308	291	
Physical Therapy	0	0	0	0	1	1	0	0	1	1	58	60	59	61	
Public Health	7	7	4	3	7	3	3	3	21	16	315	241	336	257	
SUBTOTAL Hlth. Sci.	40	38	26	20	62	54	50	48	178	160	3896	3799	4074	3959	
Home Economics	21	16	1	0	12	22	3	4	37	42	1346	1310	1383	1352	
Law School	26	28	6	11	4	4	18	23	54	66	658	654	712	720	
Liberal Arts	340	292	86	73	359	407	153	151	938	923	17045	16622	17983	17545	
Management	7	11	5	4	28	20	7	4	47	39	1415	1538	1462	1577	
Technology	48	54	14	14	254	302	37	37	353	407	5616	5873	5969	6280	
University College	7	6	2	1	2	3	2	5	13	15	150	141	163	156	
Veterinary Medicine	0	0	1	1	3	2	1	1	5	4	314	306	319	310	
TOTAL Twin Cities	N	926	865	236	213	1162	1269	462	408	2786	2755	44647	44628	47433	47383
	%	(2.0)	(1.8)	(0.5)	(0.4)	(2.4)	(2.7)	(1.0)	(0.9)	(5.9)	(5.8)	(94.1)	(94.2)	(100.0)	(100.0)
Waseca	N	0	0	0	0	0	1	0	0	0	1	1101	1112	1101	1113
	%	(0.0)	(0.0)	(0.0)	(0.0)	(0.0)	(0.1)	(0.0)	(0.0)	(0.0)	(0.1)	(100.0)	(99.9)	(100.0)	(100.0)
TOTAL ENROLLMENT	N	1025	971	333	349	1208	1314	503	442	3069	3076	56150	56214	59219	59290
	%	(1.7)	(1.6)	(0.6)	(0.6)	(2.0)	(2.2)	(0.9)	(0.8)	(5.2)	(5.2)	(94.8)	(94.8)	(100.0)	(100.0)

<sup>a</sup> Minority students are based on 88.4 percent of the total student population who had provided ethnic background information through either one or the combination of the following collection methods: application forms for admission, annual request for demographic data updating in Spring, and ethnic background survey cards distributed to registered students during fall quarters of the past. Data for Duluth-Medicine, Mayo-Graduate School of Medicine, School of Dentistry, Medical School, School of Pharmacy, Law School and College of Veterinary Medicine are supplied by the student records office from each college. Minority enrollment figures for Duluth-Letters and Sciences, College of Education, General College, Graduate School and School of Public Health are estimated from the institutional reports of the Office of Admissions and Records, Fall Quarter, 1982.

Campus/College	Minority Group										TOTAL ALL STUDENTS			
	Black non- Hispanic		American Indian or Alaskan		Asian or Pacific Islander		Hispanic American		Total Minority Students			All Other Students		
	M	F	M	F	M	F	M	F	M	F		M	F	
Crookston													N %	
Duluth														
Business & Economics														
Education														
Fine Arts														
Graduate														
Letters & Science														
Medicine														
Social Development														
TOTAL Duluth													N %	
Mayo-Graduate School													N %	NOT AVAILABLE
Morris													N %	
Twin Cities														
Agriculture														
Biological Sciences														
Education														
Forestry														
General College														
Graduate School														
Health Sciences														
Dental Hygiene														
Dentistry														
Medicine														
Medical Technology														

continued on next page



TABLE 2: MINORITY ENROLLMENT<sup>a</sup>, BY MINORITY GROUP, SEX AND CAMPUS/COLLEGE, FALL QUARTER, 1982

Campus/College	Minority Group										Total Minority Students	All Other Students		TOTAL ALL STUDENTS				
	Black Non- Hispanic		American Indian or Alaskan		Asian or Pacific Islander		Hispanic American		M	F		M	F	M	F			
	M	F	M	F	M	F	M	F										
Mortuary Science																		
Nursing																		
Occupational Therapy																		
Pharmacy																		
Physical Therapy																		
Public Health																		
SUBTOTAL Hlth. Sci.																		
Home Economics																		
Law																		
Liberal Arts																		
Management																		
Technology																		
University College																		
Veterinary Medicine																		
TOTAL Twin Cities																		
Waseca																		
TOTAL ENROLLMENT																		

N O T A V A I L A B L E

<sup>a</sup> See Notes on page 1 for reason of omission

Level	Minority Group										TOTAL ALL STUDENTS		
	Black Non-Hispanic		American Indian or Alaskan		Asian or Pacific Islander		Hispanic American		Total Minority Students			All Other Students	
	N	%	N	%	N	%	N	%	N	%		N	%
Undergraduate													
Freshmen													
Sophomores													
Juniors													
Seniors													
T O T A L Undergraduate													N O T A V A I L A B L E
First Professionals													
Graduates													
Unclassified													
T O T A L ENROLLMENT													

<sup>a</sup> See Notes on page 1 for reason of omission

TABLE 4: COMPARISON OF MINORITY ENROLLMENT, BY MINORITY GROUP AND CAMPUS, FALL QUARTER 1978 THROUGH 1982

Minority Group/Campus	1978	1979	1980	1981	1982	Increase in Attendance 1978-1982		Increase in Attendance 1981-1982	
						N	%	N	%
<b>Black Non-Hispanic</b>									
Crookston	2	9	3	2	6	4	200.0	4	200.0
Duluth	36	37	57	32	34	-2	-5.6	2	6.3
Mayo	8	6	1	0	1	-7	-87.5	1	--
Morris	49	38	60	65	65	16	32.7	0	0.0
Twin Cities	909	904	865	926	865	-44	-4.8	-61	-6.6
Waseca	0	0	0	0	0	0	0.0	0	0.0
T o t a l University	1004	994	986	1025	971	-33	-3.3	-54	-5.3
<b>American Indian or Alaskan</b>									
Crookston	6	12	7	12	11	5	83.3	-1	-8.3
Duluth	72	87	80	73	104	32	44.4	31	42.5
Mayo	1	2	0	1	1	0	0.0	0	0.0
Morris	23	21	15	11	20	-3	-13.0	9	81.8
Twin Cities	232	228	228	236	213	-19	-8.2	-23	-9.7
Waseca	1	0	0	0	0	-1	-100.0	0	0.0
T o t a l University	335	350	330	333	349	14	4.2	16	4.8
<b>Asian or Pacific Island</b>									
Crookston	2	3	2	3	1	-1	-50.0	-2	-66.7
Duluth	59	30	18	23	27	-32	-54.2	4	17.4
Mayo	8	8	15	15	9	1	12.5	-6	-40.0
Morris	5	2	3	5	7	2	40.0	2	40.0
Twin Cities	716	845	996	1162	1269	553	77.2	107	9.2
Waseca	1	3	1	0	1	0	0.0	1	--
T o t a l University	791	891	1035	1208	1314	523	66.1	106	8.8
<b>Hispanic American</b>									
Crookston	8	13	18	16	21	13	162.5	5	31.3
Duluth	13	20	23	20	5	-8	-61.5	-15	-75.0
Mayo	7	4	6	1	2	-5	-71.4	1	100.0
Morris	2	3	4	4	6	4	200.0	2	50.0
Twin Cities	388	430	435	462	408	20	5.2	-54	-11.7
Waseca	0	0	1	0	0	0	0.0	0	0.0
T o t a l University	418	470	487	503	442	24	5.7	-61	-12.1

continued on next page

TABLE 4: COMPARISON OF MINORITY ENROLLMENT, BY MINORITY GROUP AND CAMPUS, FALL QUARTER, 1978 THROUGH 1982

Minority Group/Campus	1978	1979	1980	1981	1982	Increase in Attendance 1978-1982		Increase in Attendance 1981-1982	
						N	%	N	%
<b>All Minority Students</b>									
Crookston	18	37	30	33	39	21	116.7	6	18.2
Duluth	180	174	158	148	170	-10	-5.6	22	14.9
Mayo	24	20	22	17	13	-11	-45.8	-4	-23.5
Morris	79	64	82	85	98	19	24.1	13	15.3
Twin Cities	2245	2407	2524	2786	2755	510	22.7	-31	-1.1
Waseca	2	3	2	0	1	-1	-50.0	1	--
<b>T o t a l University</b>	<b>2548</b>	<b>2705</b>	<b>2818</b>	<b>3069</b>	<b>3076</b>	<b>528</b>	<b>20.7</b>	<b>7</b>	<b>0.2</b>
<b>All Other Students</b>									
Crookston	1065	1072	1149	1128	1110	45	4.2	-18	1.6
Duluth	6629	6681	7235	7376	7564	935	14.1	188	2.5
Mayo	407	402	363	293	315	-92	-22.6	22	7.5
Morris	1354	1386	1542	1605	1485	131	9.7	-120	-7.5
Twin Cities	42583	43358	44862	44647	44628	2045	4.8	-19	-0.1
Waseca	1048	1108	1121	1101	1112	64	6.1	11	1.0
<b>T o t a l University</b>	<b>53086</b>	<b>54007</b>	<b>56272</b>	<b>56150</b>	<b>56214</b>	<b>3128</b>	<b>5.9</b>	<b>64</b>	<b>0.1</b>
<b>All Students</b>									
Crookston	1083	1109	1179	1161	1149	66	6.1	-12	-1.0
Duluth	6809	6855	7393	7524	7734	925	13.6	210	2.8
Mayo	431	422	385	310	328	-103	-23.9	18	5.8
Morris	1433	1450	1624	1690	1583	150	10.5	-107	-6.3
Twin Cities	44828	45765	47386	47433	47383	2555	5.7	-50	-0.1
Waseca	1050	1111	1123	1101	1113	63	6.0	12	1.1
<b>T o t a l University</b>	<b>55634</b>	<b>56712</b>	<b>59090</b>	<b>59219</b>	<b>59290</b>	<b>3656</b>	<b>6.6</b>	<b>71</b>	<b>0.1</b>