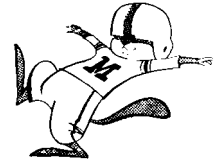


## KICKOFF 1963 FOOTBALL TICKET SALE



### NEW ATHLETIC TICKET MANAGER NAMED

She's a woman in a "man's world" but Shirley Korblick isn't afraid of the challenge. In fact she's looking forward to it.

Miss Korblick, of course, is the new athletic ticket manager at the University of Minnesota succeeding Marshall W. Ryman, now athletic director. She is the only woman to hold such a position at a Big Ten school and is believed to be the only one to do so in the history of the conference. Despite this distinction, she is not unique since three women currently hold comparable posts in Pacific coast institutions.

"Certainly my new job will be a challenge," Miss Korblick says. "But I don't expect any great problems as far as the ticket office operation is concerned. It will continue in the same manner as under Mr. Ryman. Members of our staff, including myself, have worked together for a number of years and are familiar with all aspects of the operation."

Direct relations with the ticket-buying public will be her biggest challenge, according to Miss Korblick who held the post of senior cashier under Ryman. "This is virtually a new experience for me," she points out. "Of course I had some contact with the public in my other job, but on nothing like the scale that will be the case now."

So far she has no complaints on the reception she has received from the public. "I've been accepted very well," she reports. "Everyone has been awfully nice to me and this really helps in getting off on the right foot."

Continued on Page Two

### SEASON TICKETS

Season ticket priorities will expire July 31. All season ticket holders are urged to send in their orders before the deadline.

Those who had 1962 season tickets and prefer the same location or improvement this fall, must get their orders in on time. Tickets are mailed approximately two weeks before the first home game September 28 when Minnesota faces Nebraska.

After processing the first ten days of orders received, the indication is that season ticket sales will not fall below last year. 2032 orders are in, representing 7258 tickets.

### SINGLE GAME TICKETS

Single game tickets will go on mail order sale August 1. Applications will be mailed the latter part of July to patrons on our mailing list.

Single game tickets are assigned on a "first come; first served" basis. The earlier the order the better chance for good seating.

The schedule of home games for the 1963 season is one that promises another exciting football season in Memorial stadium.

Order your tickets early and the sell-out games won't bother you later.

### OLYMPIC FUND DRIVE HITS HIGH GEAR

"It will take a lot of money to beat those d--- Russians," one fan wrote as he sent in a \$50.00 contribution to the Olympic Fund.

The University of Minnesota has acted as a collection agency for the Olympic Fund for the past few years as have the other Big Ten schools. The total amount collected is forwarded to the United States Olympic Association. The money is used to send our best amateur athletes to compete at the Olympic games.

Competition between Russia and the United States in sports has been a political issue. A victory on the athletic field is as important to the prestige of the United States as a victory in our space program. It's important to each of us and a small contribution on your ticket order will show the faith you have in our National athletic program.

# Meet the Gophers

Many new and interesting young football athletes will be in evidence when the Gophers take to Memorial Stadium September 28 for their 1963 opener with Nebraska of the Big 8 conference.

Since 10 of 11 1962 starters and 19 lettermen in all have departed, there is an unusual number of openings in the 1963 lineup.

Among the newcomers certain to figure prominently in Coach Murray Warmath's plans are Aaron Brown (6-3½ and 222 lbs.) and Kent Kramer (6-5 and 230 lbs.) at end; Roger Bonk (5-11 and 200 lbs.) at guard; Jim Krause (6-2 and 230 lbs.) at tackle; Dick Harren (5-10 and 188 lbs.) at left halfback; Fred Farthing (5-11 and 195 lbs.) at right halfback; Gale Gillingham (6-3 and 220 lbs.) and Bryan Magnusson (6-0 and 210 lbs.) at fullback; Paul Faust (6-0 and 202 lbs.) at center; and Bob Bruggers (6-0 and 205 lbs.) at end.

Harren was an all-American high school player three years ago at Cretin high in St. Paul, but missed the 1962 season because of injuries. Faust, son of former Gopher quarterback George Faust and a star fullback at Edina high, is being hailed as "another Julian Hook" because of his effective linebacking.

Gillingham who is from Little Falls caught the eyes of sideliners during spring football practice by his hard, bone-crushing running. Some observers predict that once he has adequate experience under his belt, Gillingham may be "another Bill Daley."

## NEW TICKET MANAGER NAMED - continued

Letters of congratulations and good will have been frequent arrivals on her desk.

A native of Minneapolis and a Vocational high school graduate, Miss Korblick started working for the Athletic department in 1945 on a part-time basis and began a full-time career in 1948. She advanced steadily in the classifications of clerk, senior clerk, principal clerk and senior cashier.

In announcing her appointment, Ryman had this to say about his long time associate: "Miss Korblick knows the athletic ticket business inside and out. She is an extremely efficient and conscientious worker. We received many compliments from throughout the Big Ten Conference area for the manner in which this office handled tickets for both of Minnesota's Rose Bowl football game appearances. Miss Korblick was mainly responsible for this operation. I am confident that she will do an outstanding job."

During her leisure hours Miss Korblick keeps active with such diverse interests as singing in her church choir and rock climbing. She also enjoys swimming, tennis, reading, hiking in the mountains out west and dabbling with oil painting.

"I'm strictly a novice when it comes to painting," she admits. "The same goes for climbing. What rock climbing I've done has been on the cliffs along the St. Croix River. Someday I hope to take part in one of the mountain climbing schools out in Grand Teton National Park and climb some real peaks. I think that would really be exciting."

Oh, yes, there is one other pastime which Miss Korblick enjoys. She is a vociferous rooter at all Gopher home athletic events.

## A GREEN FIELD IN THE FALL MEANS HARD WORK

Taking care of the football field at Memorial stadium is a big job.

Considerable time, effort and expense is required to maintain the playing area in suitable condition to withstand the tremendous wear and tear inflicted during the course of five or six home grid clashes.

Virgil Dwinell, grounds crew foreman, is in charge of the operation and is assisted by a crew of three or four men. Dwinell has supervised work on the field for the past eight years.

Sod is the basic component of the field although it is supplemented by seeding after the end of each football season. This seeding provides what Dwinell terms "a good catch" of grass and adds strength and durability. The same type of grass is used for the entire field, a bluegrass variety developed by the University at its experimental station on the St. Paul Campus. This grass is specially suited to our northern climate and germinates in seven days as compared to 28 days for the usual type of bluegrass.

Watering is a big item. When weather conditions call for it, the field is given a very deep watering once a week. The work is done early in the morning when conditions are supposedly best. During long dry spells, such as that which has afflicted Minnesota this summer, the frequency of watering may be stepped up a bit. "Generally speaking though," says Dwinell, "if the field gets a real good watering once a week, that should be enough."

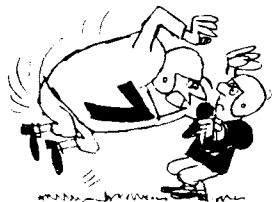
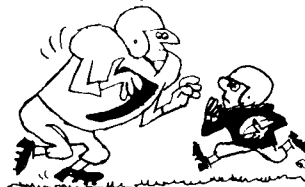
The grass is cut once a week, too. During the off season, it is usually trimmed to a height of 2½ inches but while the season is in progress the height varies from 1½ to 2 inches. The field is rolled during the season according to a pattern in which the direction of rolling is reversed every five yards. This gives the field an appearance of alternating "dark" and "light" segments of grass when viewed from the stadium.

To make the grass flourish more luxuriously, the field is fertilized, usually three times a year. Sometimes when problems develop, fertilizer experts are called in for consultation.

Recently weeds have staged a comeback after being a relatively slight problem for several years. Small weeds such as knotweed are the chief offenders. Dwinell and his associates were busy earlier this summer eradicating such nuisances with special weed-killing formulas. These weed-killers turn the field brown for a time after application but do not injure the grass itself.

Another method in the fight against weeds is the re-sodding of the field but this, of course, is

a more formidable undertaking and is avoided if possible. The field has been completely re-sodded only once in the last 10 years. Cost of the operation was approximately \$2500.





## STRONGEST NEBRASKA TEAM IN YEARS TO OPEN VS MINN.

Fans and expert observers down Nebraska way are predicting big things for the Cornhusker eleven against which the Gophers open their 1963 football campaign in Memorial stadium Sept. 28.

The Huskers have a wealth of seasoned talent headed by Dennis Claridge, All Big Eight quarterback from Robbinsdale. Claridge will direct a team that has size, speed, depth and experience.

Nebraska boosters are looking forward to the best season in many years. The Cornhuskers are currently co-favored with Oklahoma for the Big Eight conference title.

## SCHOLARSHIPS ANNOUNCED

All alumni, students, "M" men and fans who purchased tickets to the 1963 Spring Football game participated in a \$5,293.44 contribution to the Williams Scholarship program.

The latest report on the status of the Henry L. Williams Memorial Scholarship Fund was released by Glen Reed of the University of Minnesota.

Balance-July 1, 1962	\$ 70.00
Receipts - 1962-63 Fiscal Year	17,004.85
Expenditures - 1962-63 Fiscal Yr.	16,464.19
Balance - July 1, 1963	610.66

In order to qualify for a Williams Scholarship at the University of Minnesota a student-athlete must achieve B+ academic work for a full school year or cumulatively during his college years.

Twenty-one student athletes have been awarded Henry L. Williams Scholarships for 1963-64 because of their outstanding academic record during the 1962-63 school year. All of these young men will be members of an intercollegiate varsity squad next year and did participate in freshman or varsity sports the past year.

Name	Hometown	Sport	1963-64	College
Bergman, John	St. Paul	Swimming	Sr.	SLA
Bevan, William	Chisago City	Football	Soph.	SLA
Bruce, Edward	Seattle, Wash.	Swimming	Soph.	SLA
Clack, Joseph	Hales Corners, Wisc.	Swimming	Soph.	SLA
Costanza, William	Aliquippa, Pa.	Football	Jr.	GO
Dragon, James	Hopkins	Swimming	Soph.	IT
Faust, Paul	Edina	Football	Jr.	IT
Gross, Leland	Ellsworth, Wisc.	Wrestling	Soph.	SLA
Hergott, Patrick	LeSueur	Baseball	Soph.	SLA
Hoffman, David	Hutchinson	Baseball	Soph.	IT
Hustralid, Robert	St. Paul	Golf	Sr.	SLA
Keohane, John	Minneapolis	Golf	Sr.	SLA
Kleven, Erik	Eau Claire, Wisc.	Baseball	Soph.	SLA
Krohn, James	International Falls	Football	Jr.	GC
Ramseth, Paul	Redwood Falls	Football	Sr.	ED
Richardson, Walter	Hinsdale, Ill	Swimming	Jr.	SLA
Rosenberg, David	St. Paul	Tennis	Soph.	SLA
Stordahl, Larry	Roseau	Hockey	Sr.	IT
Thronson, Wayne	Evansville	Track	Jr.	SLA
Treibwasser, Wayne	Atamont, S.D.	Track	Soph.	GC
Wittenberger, John	Postville, Iowa	Wrestling	Jr.	IT

## HOT CONTEST FOR QUARTERBACKS

The graduation of record-breaking Duane Blaska has touched off a wide-open contest for the quarterback position on the 1963 Minnesota team.

In fact, the situation has led to a guessing game among local scribes, with a suspicion that Backfield coach Dick Larson is not at all certain which of four candidates will be calling the signals when the Gophers take the field against Nebraska in Memorial Stadium, Sept. 28.

The quartet in contention are John Hankinson, Edina, junior; Larry Peterson, Robbinsdale, junior; Bob Sadek, Richfield, junior and Paul Ramseth, Redwood Falls, senior. Each has certain prominent qualifications, but none has had enough game experience to provide conclusive clues.

Thus a hot contest for the starting assignment at quarterback is in prospect when fall practice opens Sept. 2.

## WE DON'T WANT A CHANGE

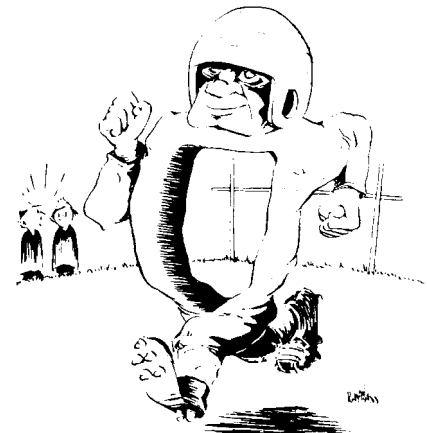
Recently a Minneapolis columnist suggested that the football patrons will have to change their expressive way of speaking when calling the new athletic ticket manager Miss Shirley Korblick.

"Generally speaking, we hope they don't change. Throughout the years, our patrons are satisfied more often than not. And even when they complain they don't want to cause trouble," Miss Korblick said.

There are always a few who think the only way to get action is to yell and scream, throwing in profanity at appropriate places. It doesn't make any difference to these individuals whether they are talking to a man or woman.

"Considering the thousands of football fans who purchase tickets yearly, we have very little trouble," she added.

Artist Ray Haas Looks at College Football



Looks like the coach is sending in the "Through-tackle" play.

# MILT SUNDE CAPTAINS 1963 GOPHERS



Captain Milt Sunde of the Minnesota football team is proving to be an outstanding example of "leadership by example."

At 205 pounds, the junior tackle from Bloomington was one of the lightest men to play this position for the Gophers in many years.

Since assuming leadership last November as captain of the 1963 Minnesota team, Sunde has set to work with a rigorous routine of body-building with the result that today he is an imposing physical specimen at 220 muscular pounds. Weight lifting has been an important part of this program.

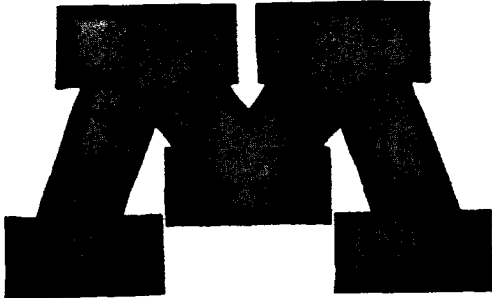
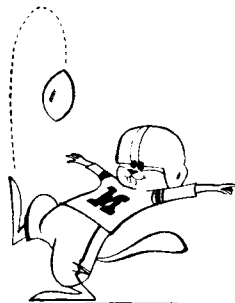
Praised by his high school coach and former Minnesota back, Shorty Cochran, as "one of the finest competitors I have ever coached or seen," Sunde is adequately endowed with the essential qualities of leadership. Sunde and teammate Carl Eller are expected to rank with the best collegiate tackle pairs in the nation this fall.

*"Follow  
the Gophers"*

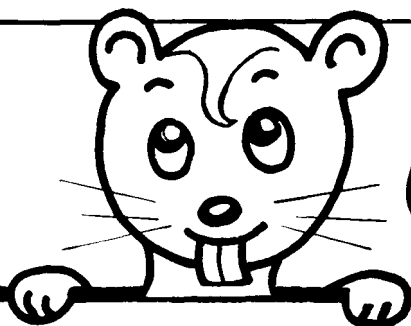
## Boost the Gophers!

### 1963 Home Football Schedule

Sept. 28	Nebraska
Oct. 5	Army
Oct. 26	Michigan (Homecoming)
Nov. 2	Indiana
Nov. 23	Wisconsin



ATHLETIC TICKET OFFICE  
UNIVERSITY OF MINNESOTA  
MINNEAPOLIS, MINNESOTA, 55455



## EXCITING NEW TALENT IMPROVES MINNESOTA BASKETBALL PROSPECTS

Exciting is the word for John Kundla's 1963-64 Minnesota basketball team.

The Gophers will be young and inexperienced but talented. Three outstanding sophomores will combine with six returning lettermen to produce what should be a most interesting season.

Kundla points to inexperience as reason for caution in predicting greatness for his squad, but he does admit that the Gophers have excellent promise.

Returning vets are co-captains Bill Davis and Bob Jensen at forward, center Mel Northway, guards Terry Kunze and Alan Druskin and Don Linehan who played guard for two years but has been shifted to forward.

(Continued on Page 2)



## "SNAPPER'S" FRIENDS ARE LEGION

Some players call him "Mother." To others, he is "Father." To almost everyone he is "Snapper." But whatever his nickname, trainer Lloyd Stein is one of Cooke Hall's most popular men.

Stein has been head trainer at Minnesota since 1935 and has been associated with the Department of Intercollegiate Athletics ever since enrolling as a freshman student back in 1928.

He has worked with every great Minnesota football player since Bronko Nagurski to current all-American tackle Carl Eller. He has ministered not only to their aches and pains but to

(Continued on Page 3)

## DEFENSE SEEN KEY TO SUCCESSFUL HOCKEY SEASON

If John Mariucci can come up with an adequate defense, Minnesota's 1963-64 hockey team could prove a pleasant surprise. Like their basketball counterparts, the ice Gophers are young, even younger than the cage contingent, but promising

Mariucci points to the blueline corps as the big question mark. All but one of last year's top four defensemen have been lost -- Louis Nanne, Jim Westby and Tom McCoy -- leaving only co-captain Dave Metzen and another letterman, Pat Furlong, who has seen limited action. Help must come from non-lettering juniors Dean Carlson and Jim Anderson, along with sophomores Frank Zywiec and Dick Swenson.

There is no shortage of talent among the forwards. Back again are six lettermen: co-captain Larry Stordahl and Bill Ramsay, both seniors, and juniors Craig Falkman, Dick Haigh, Roy Nystrom and Dick Bloom. Joining them will be a fine group of sophomores: Doug Woog, Bruce Larson, Gary Hokanson, Mark Ryman, Lorne Grosso, John Torrel and Mike Alm. Woog is considered a first-rate prospect.

This group must fill some large holes left by the graduation of Dave Brooks, Len Lilyholm, Gary Schmalzbauer, Jim Stordahl and Ron Constantine.

The Gophers have lost prime sophomore goalie Gary McAlpine to the U. S. Olympic team but have another soph, John Lothrop, who should provide excellent goaltending. He will be bolstered winter quarter by letterman Bill Fabian who is not eligible at this time.

## MINNESOTA ATHLETES ARE STUDENTS

At the end of the 1962-63 school year, a study was made of the varsity athletes grades. Of the 265 boys who this year comprise our varsity teams, the average honor-point-ratio was 2.41 (C plus). This compares favorably with the All-University average of 2.44.

In this group of 265 student-athletes, 39 had an honor-point-ratio of 3.0 or better, with the average of this group being 3.3 (B plus). The 1963 freshman class of recruited student athletes has good academic potential also as evidenced by the fact that their average high school rank is at the 72nd percentile. In a time of steadily increasing entrance requirements and rigid eligibility rules, we are justly proud of the grades our athletes are achieving.

## THE GOPHER CHATTER

The Gopher Chatter is published quarterly by the University of Minnesota Department of Intercollegiate Athletics. The publication's purpose is to provide information of interest which is not generally available elsewhere. It is mailed without charge to University athletic ticket purchasers of current record, M club members and University personnel. Circulation: 25,000. Editorial Staff: Marshall W. Ryman, Otis J. Dypwick, Shirley Korblick, Glen Reed, Marion Raihala, Mike Lyons.

## 1,700 HIGH SCHOOL COACHES, 7,100 PLAYERS ENJOY REDUCED RATES

The University of Minnesota invites High School Coaches and High School Squads to their events at a complimentary reduced rate. This year for football approximately 1,700 football coaches were admitted to five home games and 7,100 football squad members were admitted to three home games, at the price of \$1.00 each. Invitations have gone out to Basketball and Hockey coaches and squads, and will be forthcoming in other sports. Coaches and squads enjoy this privilege of observing Minnesota sports at first hand.

## MINNESOTA STAFF ON MOVE FOR GOOD COACH RELATIONS

The University of Minnesota Intercollegiate staff anticipated the effectiveness of a good public relations rapport with high school coaches and administrators several years ago. In achieving this well-established relationship, the coaches of Minnesota's 11 intercollegiate sports have appeared at banquets, alumni and sports functions, and clinics in Minnesota and the upper Midwest.

When asked what the most important objective of the various banquets and clinics were, Glen Reed, athletic aid coordinator and freshman basketball coach, wasted no time in replying. "We become better acquainted with successful coaches in the area and renew old friendships," he said.

"We always want to stress good will in addition to learning something," Reed said. Apparently the coaching staff hasn't wasted any time and effort in achieving this end.

"Each summer," said Reed, "representatives of our department appear at major clinics in the area." The past summer was no exception with members of the athletic department present at clinics in Bemidji, Moorhead, Crookston, Virginia, and River Falls and Superior, Wisconsin.

"We try and reach different cities in different parts of the state," said Reed. "It is never possible to get the entire staff, but we do succeed in getting more than one sport represented.

It is obvious that spreading "good will" is one quality that the athletic department excels in with favorable results. Each banquet and clinic attended has provided the Minnesota coaching staff an opportunity to become better acquainted with coaches and administrators in this area. Undoubtedly, both sides have benefited from the exchange of ideas and rapport established.

## "BASKETBALL" - CONTINUED FROM PAGE 1

Top newcomers are forward Louis Hudson and guards Archie Clark and Don Yates. Additional promising rookies include guards Wes Martins and Dean Lopata and forward Dennis Dvoracek.

Others who could help are three non-lettering juniors: Dave Wykes and Jim Ginsburg, both centers, and guard Dave Nelson.

The new Gophers will feature more competitive spirit, speed and finesse than any Minnesota team in memory. They will lack the services of seven lettermen from last winter's squad, including starters Eric Magdanz, Tom McGrann and Bob Bateman. They'll also have a shortage of height, but increased jumping ability will help. Biggest problems are defensive weakness and lack of a strong center replacement for Northway.

## MINNESOTA FOOTBALL BILLBOARDS COURTESY ALUMNUS HALENKAMP



A 1961 Billboard

Perhaps you have driven around the state and seen large billboards advertising the Gopher football schedule. Relax, it's not your money. Those billboards are free.

How did it begin? It was the idea of George L. "Larry" Halenkamp, Jr., football letterman of 1946-47. With the cooperation of Jack Strong of Austin and the Minnesota Outdoor Advertising Association, the billboards were set up. For the last three years Minnesota has had about one hundred billboards for one or two months. Space is donated by approximately twenty-one billboard companies. Posters were located in such varied places as Minnesota, North Dakota, Montana, Wisconsin and Times Square, New York. We say, "Thanks to these boosters of Minnesota Football." Watch for the billboards next year.

## EXCITING BASKETBALL, HOCKEY AHEAD SO ORDER TICKETS NOW!

Have you got your Basketball and Hockey tickets? Order now for the exciting games coming up. Applications have been mailed out. If you want one, call 373-3181. Basketball reserved tickets are \$2.00 and Hockey reserved \$1.75. Don't miss out on an exceptional lineup of fast-moving entertainment.

## TENDERED FRESHMEN TO BOLSTER 1964 MINNESOTA FOOTBALL TEAM

An abundance of veteran players will return next season to improve Minnesota's football prospects for the 1964 season. In addition, Coach Murray Warmath will have 31 tendered athletes from this year's freshman football team to augment the seasoned material.

Four newcomers have a good chance to see a lot of action next season. They are Ken Rota, halfback from Benilde; ends Chet Anderson of Duluth and Ken Last of Bloomington; and tackle Joe Schmiesing of Sauk Centre. All are former All-State players and tendered athletes at the University.

The entire starting lineup for the freshman in the recent freshman-varsity inter-squad clash was laden with tendered athletes. The lineup included Anderson and Last at ends; Joe Schmiesing and Gary Hoehn, tackles; Jim Long and Charles Nash, guards; Jim Barle, center; Glen Wirtanen, quarterback; Jerome Newsom, fullback; Dave Colburn and Rota, halfbacks.

Twenty-three of the 31 tendered athletes are home-staters and they compose the core of the "green chip" athletes recruited in Minnesota.

The tendered athletes in freshman football are: Chet Anderson, Duluth; Ron Austin, Uniontown, Pa.; James Barle, Coleraine; Doug Benit, Baudette; Elwood Boe, Leroy; Edward Christian, Minneapolis; David Colburn, LaCrosse, Wis.; Eugene Hatfield, Holcombe, Wis.; Gary Hoehn, Hopkins; Joseph Holmberg, Minneapolis; John Holt, Onamia; Gary Kersten, Springfield; Paul Langager, Orem, Utah; Ken Last, Minneapolis; James Long, Eau Claire, Wis.; Herbert Marshall, Temple City, Calif.; Roger Michalski, Silver Bay; Charles Nash, Angora; Jerome Newsom, Minneapolis; David Olson, Benson; Gary Reiersen, Minneapolis; Ronald Reitmeier, Fisher; Michael Rnner, Springfield; Ken Rota, Minneapolis; Joe Schmiesing, Sauk Centre; Richard Seitz, Minneapolis; Richard Stoffel, St. Paul; Roy Sutherland, Rochester; Tim Wheeler, Minneapolis; Ray Whitlow, Houston, Texas; Glen Wirtanen, Downers Grove, Ill.

## BACKCOURT, BLUELINE CLUBS OPEN FOR MEMBERSHIP

Two focal centers of interest in Minnesota athletics during the winter months are the Backcourt and Blueline clubs. They are the basketball and hockey equivalents to the Quarterback club in football.

Both organizations meet at Jax Cafe. The Backcourt club has scheduled five luncheon meetings for this season while the Blueline club has six sessions on tap. The former will meet December 18, January 14, February 4 and 18 and March 3. The hockey group will gather on November 29, December 17, January 10, 24, February 7 and March 6.

Each group honors outstanding players in their respective sports in metropolitan com-

petition each week and select all-conference teams at the end of the season. Head coaches John Kundla and John Mariucci are always on hand and visiting coaches are frequent guests.

A special project of the Backcourt Club this year will be the David McMillan Memorial Award which provides a scholarship to the outstanding student-athlete in area high school basketball. The club has donated \$3,000 in the last four years to the Williams Scholarship Fund.

A highlight of the Blueline schedule will be the appearance of the U. S. Olympic team at the December 17 luncheon.

Persons who would like to belong to either or both clubs are urged to join. They may do so by contacting either Bill or Jack Kozlak at Jax Cafe.

---

### "SNAPPER" - CONTINUED FROM PAGE 1

their personal problems as well, in his self-appointed role of amateur psychologist.

"I've seen a lot of all-Americans in my day," Stein declares. "My training room walls are lined with pictures of them, but I carry pictures of a lot of other all-Americans in my mind -- guys who never made it officially but made great contributions to Minnesota athletics, nevertheless. Some of them came awfully close to national recognition, others were never in the running, but they were all real good guys."

Stein has great admiration for college athletes. "People don't realize what kids have to go through to win a letter," he explains. "They really have to work -- not only in sports but in their studies, too. It's a real tough double job but one which helps build better men. The result is definitely worth the price."

Always ready with a quip, a bit of advice or a pat on the back when it's needed, Stein knows when to give a player a "hard time," too. Sometimes a little gentle "riding" works wonders.

A native of Two Harbors, Stein played football with Nagurski under Doc Spears as a sophomore center in 1929. He went on to become an outstanding lineman on Fritz Crisler's teams of 1930-31 before graduating in 1932.

He subsequently took a fling at playing center on a Canadian rugby team and picked up his famous nickname in the process. The center in rugby is referred to as the "snapper-back."

In addition to his Minnesota training duties, Stein receives numerous requests to examine high school athletes as well as other cases involving injuries of various kinds. He has never turned down anybody despite his busy schedule.

Although he has had several tempting offers to leave the University, Stein has always declined them. His reason: He's happy at Minnesota. "I've worked with two generations of athletes since I've been here," he points out. "I'd like to make it three."

### WILLIAMS FUND DONATIONS SOUGHT

The 1963 Henry L. Williams Memorial Scholarship Fund Drive began October 14, with a goal set at \$50,000. At the present time, \$13,500 in contributions have been received for this program. Alumni, Fans, "M" men and former Williams Recipients have been encouraged to support this worthwhile scholarship fund for student-athletes by sending their gift into the Athletic Department.

1963-64 Williams Scholarship winners all have a 3.0 (B+) grade point average or better, and are outstanding athletes as well as scholars. Twenty-one boys in eight different varsity sports are receiving Williams Scholarships this school year. This scholarship program has been an integral motivation factor in encouraging high scholastic achievement from varsity athletes ever since 1949.

### OLYMPIC DONATIONS HIT NEW HIGH

University of Minnesota Athletic patrons have donated \$1,945.13 to the Olympic Fund which will be used to help finance our amateur athletes. This is \$527.00 more than last year. The Athletic Department wishes to thank all who donated

### YES, IT'S TRUE..... FREE TICKETS FOR DADS, ALUMNI

First Man: "I just got a coupon good for two free tickets to the Iowa State Basketball game. I'm a member of the Alumni Association."

Second Man: "You have nothing on me, I got one for the Duluth Hockey game because I'm a member of the Dad's Association. I guess luck is on our side."

Yes - it's true. Approximately 275 coupons good for two free reserved tickets each are sent out for Basketball and Hockey home games. These are mailed at random to paid up members of the Alumni Association and members of the Dad's Association. We feel these people are actively interested in the University of Minnesota and we want to renew their contacts with our sports program.

*"Follow  
the Gophers"*



# Boost the Gophers!

NON-PROFIT ORGANIZATION

#### 1963-64

#### HOME BASKETBALL SCHEDULE

- Tuesday, Dec. 3, Iowa State
- Saturday, Dec. 14, South Dakota
- Thursday, Dec. 19, Wichita
- Saturday, Dec. 21, Drake
- Saturday, Jan. 4, Purdue
- Tuesday, Jan. 14, Michigan State
- Saturday, Jan. 18, Northwestern
- Saturday, Feb. 1, Wisconsin
- Saturday, Feb. 15, Illinois
- Tuesday, Feb. 18, Michigan
- Saturday, Feb. 29, Iowa

#### 1963-64

#### HOME HOCKEY SCHEDULE

- Tuesday, Dec. 17, U. S. Olympics (Tentative)
- Saturday, Dec. 28, Army
- Friday, Saturday, Jan. 10-11, Michigan
- Friday, Jan. 17, U.M. Duluth
- Friday, Saturday, Jan. 24-25, Michigan State
- Friday, Saturday, Feb. 7-8, Colorado College
- Friday, Saturday, Mar. 6-7, North Dakota



Univ. of Minn. Archives Dept.  
Att: Maxine Clapp  
11 Walter Library