

AHC Community Forum

Leading into the “New Normal”



Frank B. Cerra, M.D.
Senior Vice President for Health Sciences
and
Medical School Dean

July 29, 2009

Impact of “New Normal” on the AHC

- Budget challenges
- Improving operational efficiency
- Statewide clinical relationships
- Value of research corridors
- Need for creativity and innovation

AHC Mission

- We educate the next generation of health professionals
- We discover and deliver new treatments and cures
- We enhance and support the economic vitality of health care and health industries

The “New Normal”

Intense public interest in:

- Transparency
- Input for decisions
- Fairness and equity
- Concerns about “elitism”

New Environment

- Put out as much information as possible
- Provide public forums
- Demonstrate fairness
- Open, clear, candid and straight forward communication

Financial Challenges

\$140M less state support to the U

- Why does education cost so much?
- Is compensation in line with the marketplace?
- Do we need a different way to question operating increases and priorities?
- Are we managing the cost of new buildings as tightly as we could?
- Have we truly accounted for the cost of conducting research?

New Economic Model - Research

- Will NIH, USDA, and NSF have greater research funding?
- Will there be non-traditional ways to fund research?
- Will industry continue to seek results from academic institutions?
- How much cross-subsidy for research will we continue?

New Economic Model - Education

- Are we at the limit of what students can afford for a health professional degree?
- If Medicare and Medicaid dollars no longer fund education, what source will take its place?
- Can we continue to count on the 1700 Minnesota hospitals and clinics to support clinical education?

New Economic Model – Clinical Enterprise

- Can we achieve efficiencies with Fairview to compete in the health care marketplace?
- Can we change the way we work with communities to engage in clinical and translational research?
- Will health reform affect our revenue from patient care?

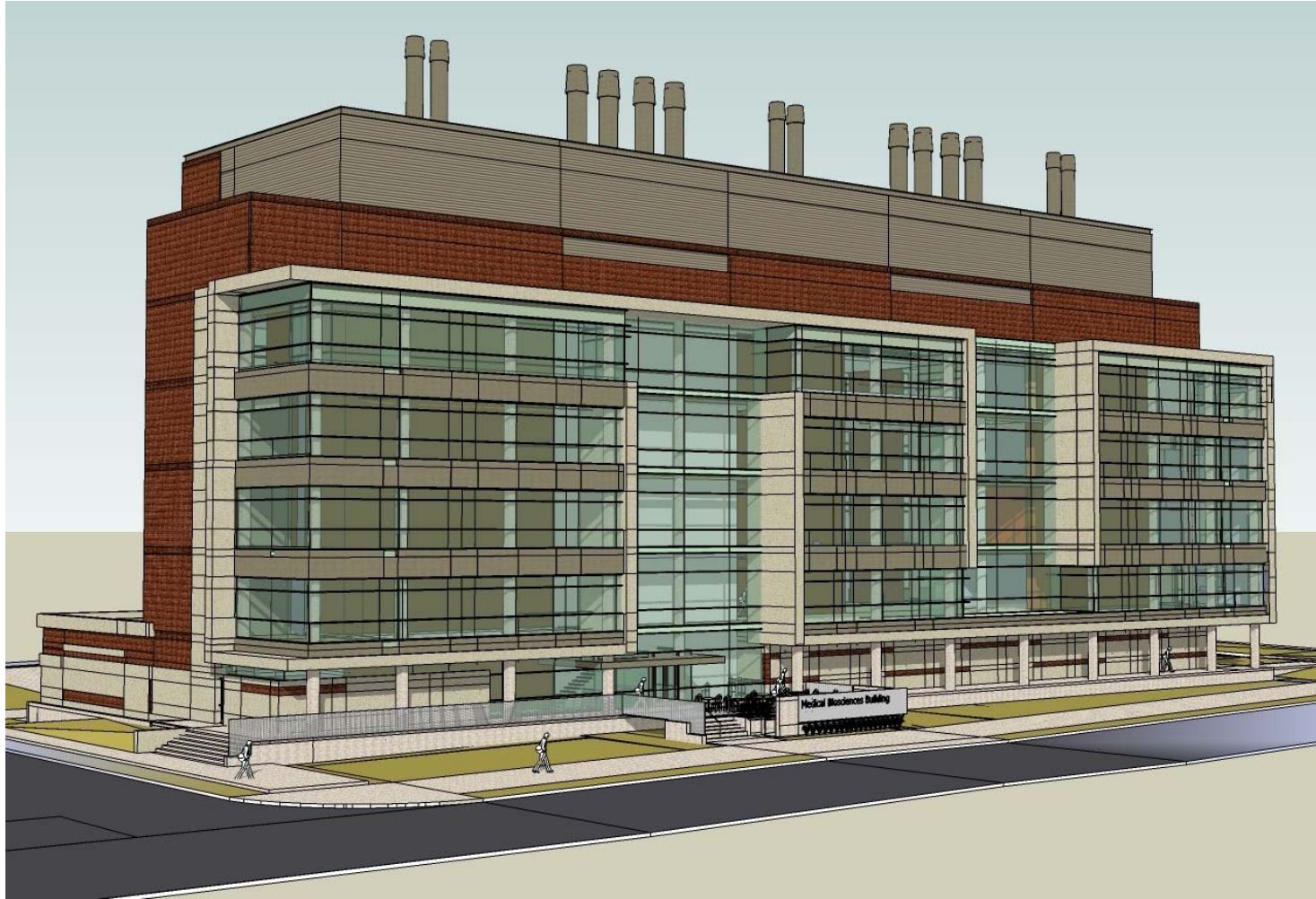
Efficient and Effective Operations

- AHC and Medical School administrative budget cuts
- Analysis of AHC services
 - IT
 - Human Resources
 - Education
 - Facilities
 - Communications

Research Corridors

- Areas of expertise
 - Diabetes
 - Infectious diseases and immunology
 - Neurosciences
 - Cardiology
 - Cancer

Medical Biosciences Building



Biomedical Discovery District

- Medical Biosciences Building completed fall 2009
- Center for Magnetic Resonance Research expansion ground breaking summer 2009
- Pre-design will be completed for research facilities in oncology and cardiac disease in November 2009 with design and construction to begin by fall 2010

Questions

