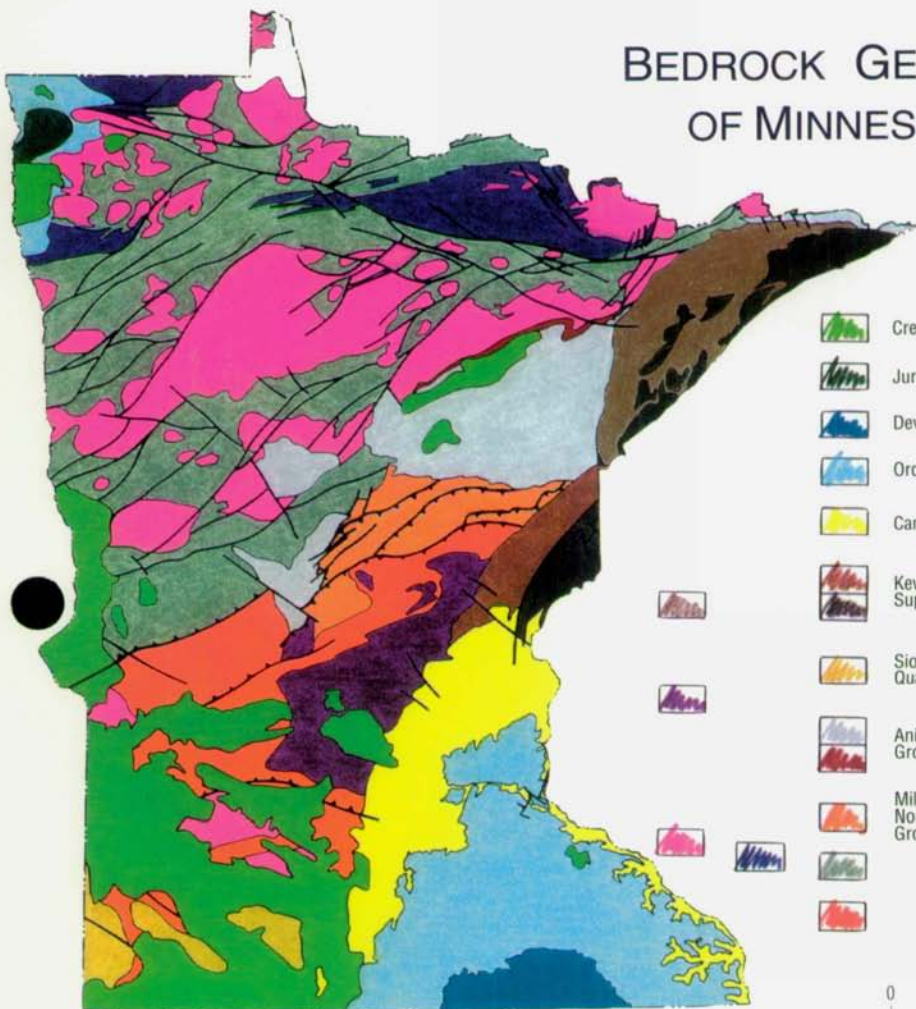
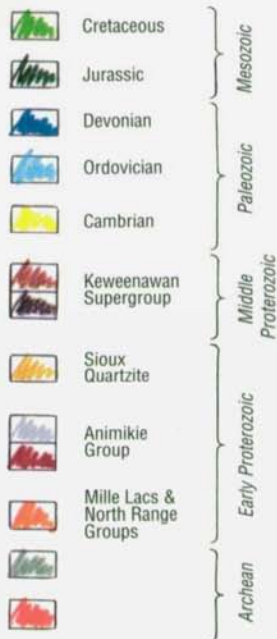


BEDROCK GEOLOGY OF MINNESOTA



CORRELATION OF MAP UNITS



DESCRIPTION OF MAP UNITS

- | | | | |
|--|---|--|--|
| | Mudstone, siltstone, lesser sandstone. | | Intrusive rocks of dominantly granitic composition. |
| | Red shale. | | Graywacke, siltstone, shale. |
| | Limestone and dolostone. | | Iron-formation with a basal quartz arenite. |
| | Limestone, dolostone, lesser sandstone and shale. | | Quartz arenite, siltstone intercalated with mafic volcanic rocks, carbonaceous shale and iron-formation. |
| | Sandstone, shale, lesser carbonate. | | Intrusive rocks of dominantly tonalitic to quartz monzonitic composition. |
| | Shale and arkosic sandstone overlain by quartz arenite. | | Schist- and granite-rich migmatite. |
| | Extrusive rocks of dominantly mafic composition. | | Extrusive rocks of mafic to felsic composition, associated volcanogenic rocks and derivative graywacke. |
| | Intrusive rocks of dominantly mafic composition. | | Quartzofeldspathic gneiss, amphibolite and other high-grade metamorphic rocks. |
| | Quartz arenite. | | |



MINNESOTA GEOLOGICAL SURVEY

2642 University Ave.
St. Paul, MN 55114-1057
(612) 627-4780

FIRST CLASS
LETTER RATE
POSTAGE
REQUIRED

This interim geologic map shows the general distribution of rock types underlying Minnesota's landscape. Some of the rocks are 3.6 billion years old — the oldest found so far in the United States. The map reflects geologic ideas developed by scientists during the past decade. Because the map was compiled from large-scale maps, large parts of which were interpreted from geophysical data, this image should not be photographically or digitally enlarged for use at a more detailed scale.

In 1992, the Minnesota Geological Survey celebrates its 120th year of research, teaching, and public service in the earth sciences. The Survey is a unit of the Institute of Technology, University of Minnesota. The University of Minnesota is an equal opportunity educator and employer.

Map compiled by G.B. Morey. Copyright 1992 by Board of Regents, the University of Minnesota.